

Archaeological
Services

Geotechnical
Engineering

Environmental
Engineering

Hydrogeology

Geological
Engineering

Materials Testing

Building Science

patersongroup

SUPPLEMENTARY DOCUMENTATION

Stage 2 Archaeological Assessment:

Trailsedge Phase 5 North
Part Lots 1, 2, 3, & 4, Concession 3 OF,
Part 2 Plan 5R8348 PIN 04404-1472,
Part 1 Plan 4R29569 PIN 04404-0503,
Part 1 Plan 4R23507 PIN 04404-0541,
Part 5 Plan 4R-23507 PIN 04404-0539,
Part 2 Plan 4r-22552 PIN 04404-0543,
and Part 1 Plan 4R22552 PIN 04404-0542
Geographic Township of Gloucester
City of Ottawa, Ontario

Prepared For

Patrick Gaudreault
Richcraft Homes
201-2280 St. Laurent Blvd.
Ottawa, Ontario
K1G 4K1
Tel: 613-739-7111
pgaudreault@richcraft.com

January 2021

Submitted for review January 26, 2021

Paterson Group Inc.

Consulting Engineers
154 Colonnade Road South
Ottawa (Nepean), Ontario
Canada K2E 7J5

Tel: (613) 226-7381

Fax: (613) 226-6344

Licensee: Nadine Kopp (P378)

PIF: P378-0037-2020

Related Stage 1 PIF: P366-0040-2013

Report: PA1191-REP.01

Datum and Site Coordinates

GPS readings made with a Bad Elf Surveyor connected to ArcGIS Collector using the NAD 83 datum and UTM zone 18 projection with WAAS and DGPS enabled providing an average of 2.0 m horizontal and 3.0 m vertical accuracy.

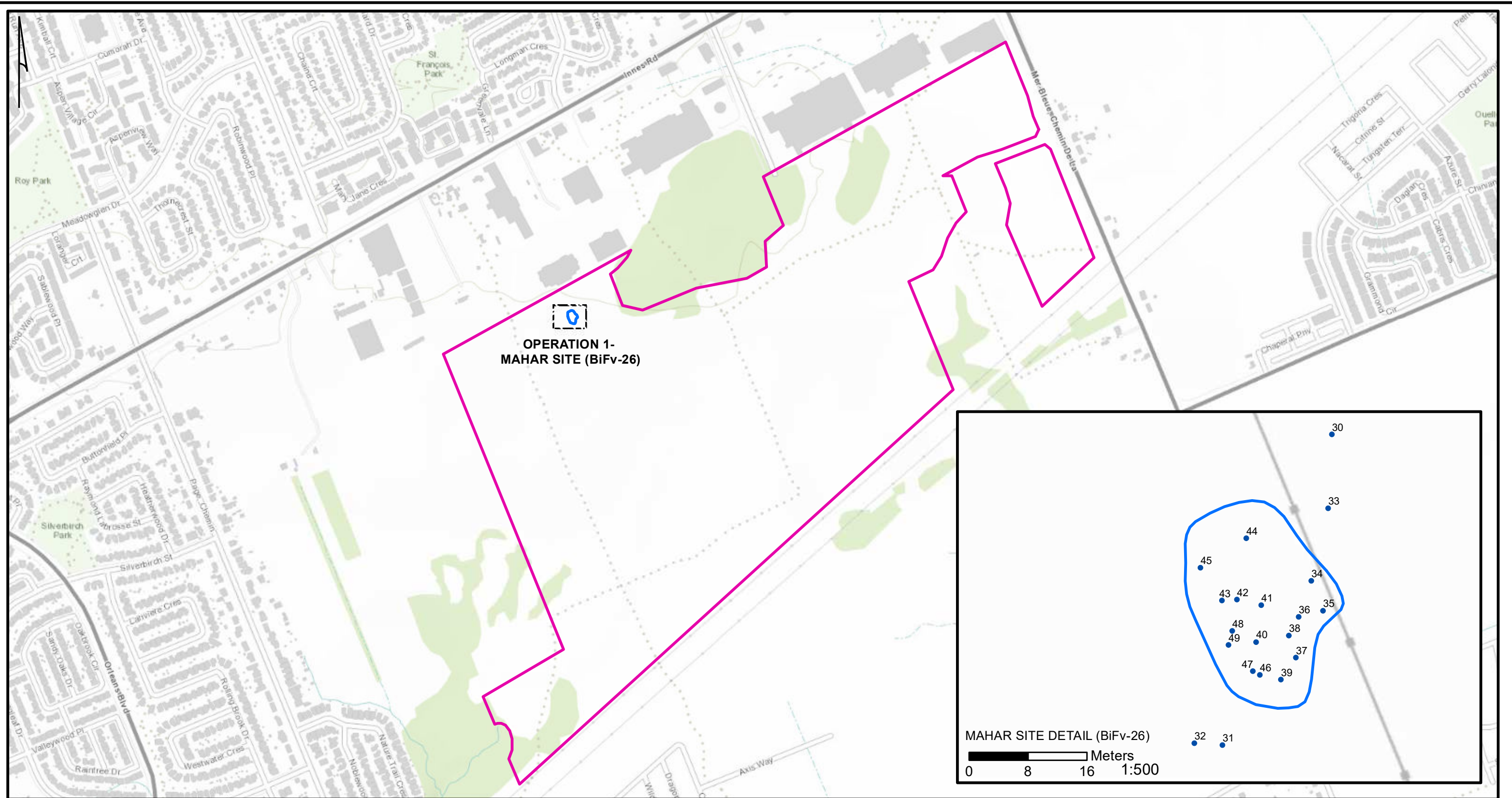
Conditions for GPS survey were clear with no to partial cloud cover on August 31, 2020 from 8 am to 4 pm.

Mahar Site (BiFv-26) Coordinates:

Point	X	Y
N	459704.9	5032798.6
E	459725.5	5032770.0
S	459707.0	5032735.6
W	459675.3	5032768.4
Centre*	459704.4	5032765.7

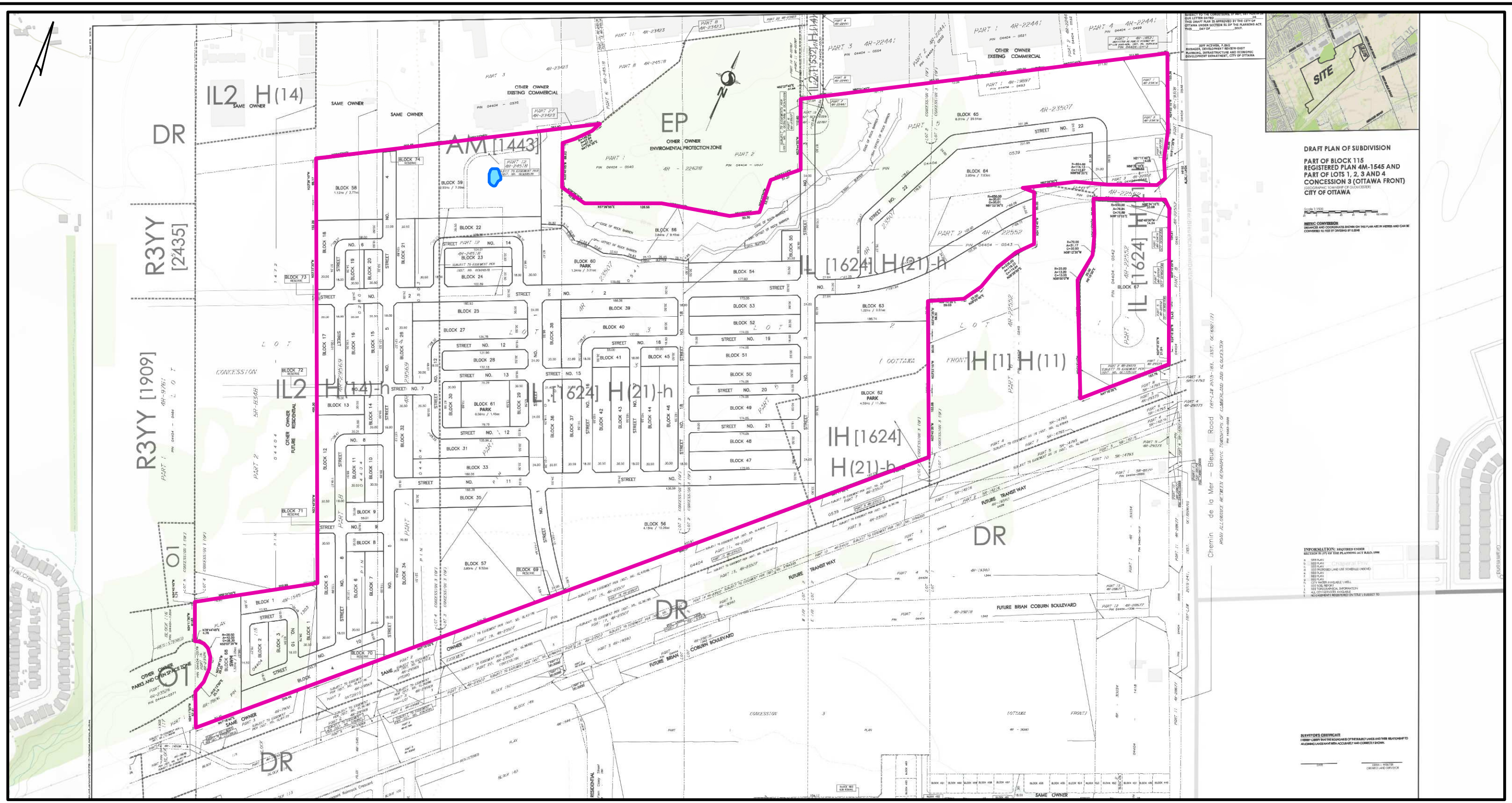
Elevation 89 m

Maps



- MAHAR SITE AREA
- STUDY AREA
- STAGE 2 PEDESTRIAN SURVEY FIND SPOT WITH WAYPOINT #

REFERENCES:
 COORDINATE SYSTEM: NAD 1983 UTM ZONE 18N
 SERVICE LAYER CREDITS: SOURCES: ESRI, HERE, GARMIN, INTERMAP, INCREMENT P CORP., GEBCO, USGS, FAO, NPS, NRCAN, GEOBASE, IGN, KADASTER NL, ORDNANCE SURVEY, ESRI JAPAN, METI, ESRI CHINA (HONG KONG), (C) OPENSTREETMAP CONTRIBUTORS, AND THE GIS USER COMMUNITY



DRAFT PLAN OF SUBDIVISION
 PART OF BLOCK 115
 REGISTERED PLAN 4M-1545 AND
 PART OF LOTS 1, 2 AND 4
 CONCESSION 3 (OTTAWA FRONT)
 C/O: RICH CRAFT
 CITY OF OTTAWA

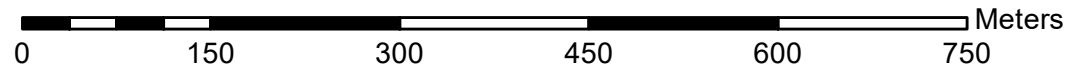
SCALE 1:500
 METRIC CONVERSION
 DIMENSIONS AND COORDINATES SHOWN ON THIS PLAN ARE IN METERS AND CAN BE
 CONVERTED TO FEET BY DIVIDING BY 0.3048

INFORMATION REQUIRED UNDER
 SECTION 37(1) OF THE PLANNING ACT R.S.O. 1990

1. SITE PLAN
2. CONCEPT PLAN
3. PRELIMINARY ENGINEERING
4. CONCEPT PLAN
5. CONCEPT PLAN
6. CONCEPT PLAN
7. CONCEPT PLAN
8. CONCEPT PLAN
9. CONCEPT PLAN
10. CONCEPT PLAN

SEVERITY CERTIFICATE
 I HEREBY CERTIFY THAT THE INFORMATION ON THIS PLAN IS TRUE AND CORRECT AND
 ACCORDING TO MY BEST KNOWLEDGE AND BELIEF.

STUDY AREA
 MAHAR SITE AREA



REFERENCES:

COORDINATE SYSTEM: NAD 1983 UTM ZONE 18N
 SERVICE LAYER CREDITS: SOURCES: ESRI, HERE, GARMIN, INTERMAP, INCREMENT P CORP.,
 GEBCO, USGS, FAO, NPS, NRCAN, GEOBASE, IGN, KADASTER NL, ORDNANCE SURVEY, ESRI
 JAPAN, METI, ESRI CHINA (HONG KONG), (C) OPENSTREETMAP CONTRIBUTORS, AND THE GIS
 USER COMMUNITY
 CONCEPT PLAN PROVIDED BY RICH CRAFT

paterson group
 consulting engineers
 154 Colonnade Road South, Ottawa, Ontario K2E 7J5

Scale 1:6,000
 Des DW
 Drawn DW
 Chkd BM

Project PA1191
 Borden None

STAGE 2 ARCHAEOLOGICAL ASSESSMENT
 TRAILS EDGE PHASE 5 - NORTH
 PROPOSED RESIDENTIAL DEVELOPMENT
 OTTAWA, ON

DEVELOPMENT MAP

File: PA1191 DM SD
 Date: 1/15/2021
 Map: 2