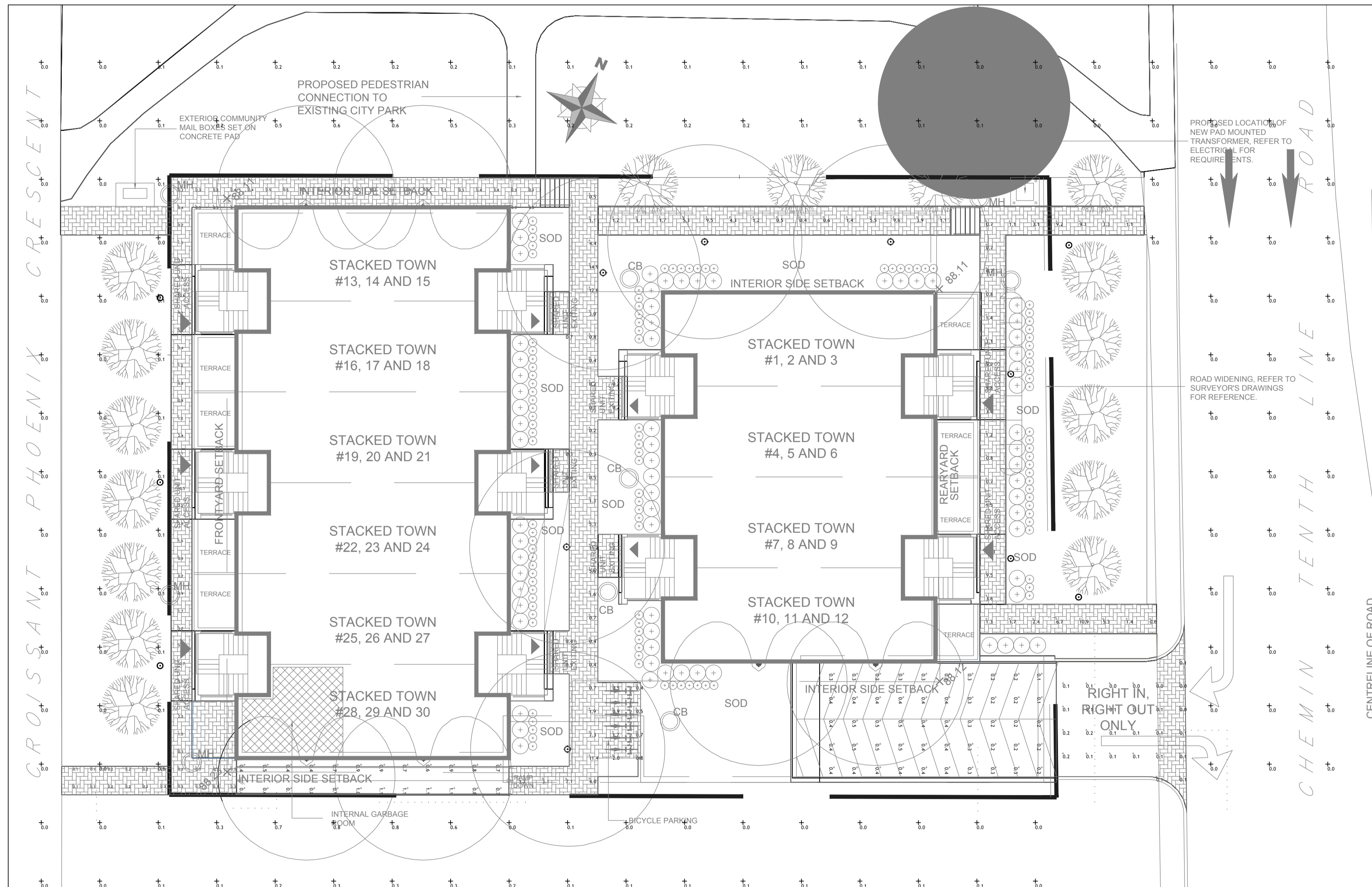


An exact copy of all working documents including, without limitations, the original of the present document or plan is kept on file by J.R.P. Engineering. Any modification carried out to this document or plan or to accompanying documents without written authorization by the engineer is prohibited.

Authorized modifications must be signed and sealed by an engineer and this engineer will be completely responsible for these modifications. J.R.P. Engineering is not and will not be responsible for the consequences of these modifications or for modifications carried out without its consent.



1 SITE LIGHTING PLAN  
E-1 1:200

LIGHTING SCHEDULE							
Symbol	Qty	Label	Arrangement	LLF	Description	Lum. Lumens	Lum. Watts
	12	B	SINGLE	0.900	BL25-NW-G1-5-8-BZ	2539	26.2
	6	C	SINGLE	0.900	7177-34-H16-40K	1624	17.0195

No	DESCRIPTION	DATE
0	ISSUED FOR SITE PLAN	MAR 08 2021

**REVISIONS**



client:

project:  
**ELECTRICAL  
PHOTOMETRIC**  
1592 TENTH LINE RD,  
OTTAWA, ONTARIO

drawing title:  
**SITE LIGHTING  
PHOTOMETRIC**

scale:	AS NOTED	drawn by:	C.M.
designed by:	C.M.	reviewed by:	M.G.
approved by:	M.G.	date:	MAR 2021

project no.:	100-2104	drawing no.:	E1
revision:	<0>		of 1