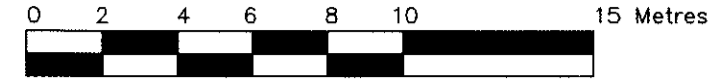


TOPOGRAPHIC PLAN OF PART OF LOT B CONCESSION 11 GEOGRAPHIC TOWNSHIP OF CUMBERLAND NOW IN THE CITY OF OTTAWA 2014

SURVEYED BY: ARPENTAGE DUTRISAC SURVEYING INC. SCALE 1 : 200



METRIC DISTANCES AND COORDINATES SHOWN ON THIS PLAN ARE IN METRES AND CAN BE CONVERTED TO FEET BY DIVIDING BY 0.3048.

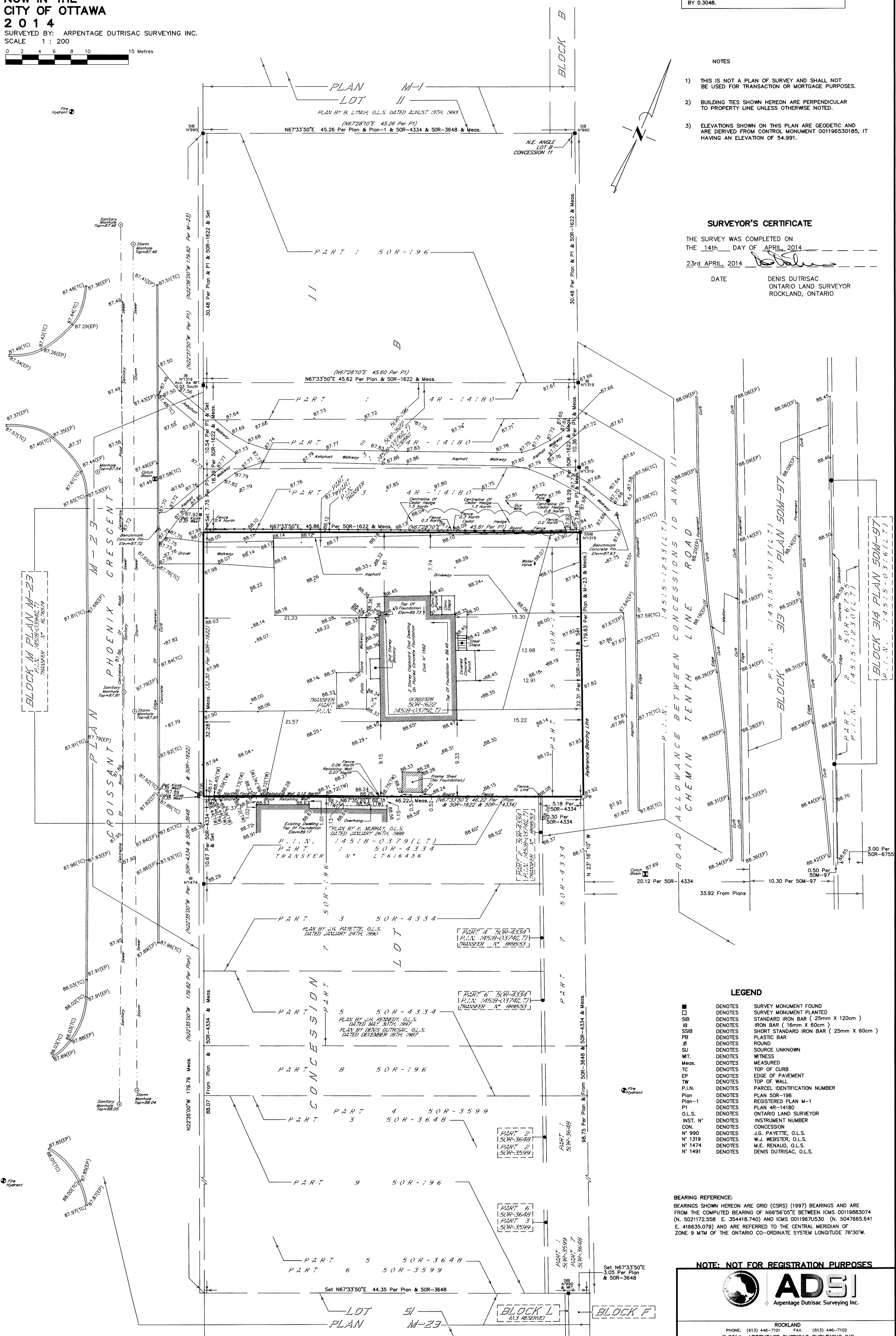
NOTES

- 1) THIS IS NOT A PLAN OF SURVEY AND SHALL NOT BE USED FOR TRANSACTION OR MORTGAGE PURPOSES. 2) BUILDING TIES SHOWN HEREON ARE PERPENDICULAR TO PROPERTY LINE UNLESS OTHERWISE NOTED. 3) ELEVATIONS SHOWN ON THIS PLAN ARE GEODETIC AND ARE DERIVED FROM CONTROL MONUMENT 001196530185, IT HAVING AN ELEVATION OF 54.991.

SURVEYOR'S CERTIFICATE

THE SURVEY WAS COMPLETED ON THE 14th DAY OF APRIL 2014 23rd APRIL, 2014

DATE DENIS DUTRISAC ONTARIO LAND SURVEYOR ROCKLAND, ONTARIO



LEGEND

- Denotes symbols for Survey Monument Found, Standard Iron Bar, Iron Bar, Short Standard Iron Bar, Plastic Bar, Round, Source Unknown, Witness, Measured, Top of Curb, Edge of Pavement, Top of Wall, Parcel Identification Number, Plan, Plan M-1, Plan 4R-14180, O.L.S., Instrument Number, Concession, N 990, N 1319, N 1474, N 1491.

BEARING REFERENCE: BEARINGS SHOWN HEREON ARE GRID (CSRS) (1997) BEARINGS AND ARE FROM THE COMPUTED BEARING OF N66°56'05"E BETWEEN ICMS 00119883074 (N. 5021172.558 E. 354418.740) AND ICMS 00119675030 (N. 5047665.641 E. 416635.079) AND ARE REFERRED TO THE CENTRAL MERIDIAN OF ZONE 9 M TM OF THE ONTARIO CO-ORDINATE SYSTEM LONGITUDE 76°30'W.

NOTE: NOT FOR REGISTRATION PURPOSES



ROCKLAND PHONE: (613) 446-7101 FAX: (613) 446-7102 © 2014 ARPENTAGE DUTRISAC SURVEYING INC.