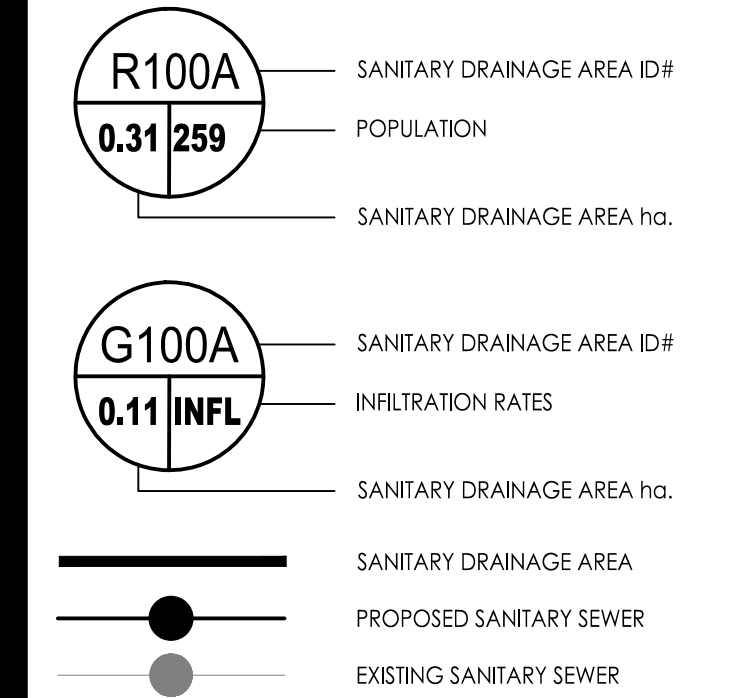


Stantec Consulting Ltd.  
400 - 1331 Clyde Avenue  
Ottawa ON  
Tel. 613.722.4420  
www.stantec.com

Copyright Reserved  
The Contractor shall verify and be responsible for all dimensions. DO NOT scale the drawing - any errors or omissions shall be reported to Stantec without delay.  
The Copyrights to all designs and drawings are the property of Stantec. Reproduction or use for any purpose other than that authorized by Stantec is forbidden.

### Legend



### Notes

SANITARY STATS	
<b>POPULATION COUNT</b>	
<b>TOWER 1</b>	
166 - 1 BEDROOM APTS @ 1.4PPU = 232 PEOPLE	
40 - 2 BEDROOM APTS @ 2.1PPU = 84 PEOPLE	
<b>TOTAL POPULATION TOWER 1 = 316 PEOPLE</b>	
<b>BUILDING 2</b>	
80 - 1 BEDROOM APTS @ 1.4PPU = 112 PEOPLE	
7 - 2 BEDROOM APTS @ 2.1PPU = 15 PEOPLE	
10 - 3 BEDROOM APTS @ 3.1PPU = 31 PEOPLE	
<b>TOTAL POPULATION TOWER 2 = 158 PEOPLE</b>	
<b>BUILDING 3</b>	
2 - STUDIO APTS @ 1.4PPU = 3.0 PEOPLE	
69 - 1 BEDROOM APTS @ 1.4PPU = 97 PEOPLE	
16 - 2 BEDROOM APTS @ 2.1PPU = 34 PEOPLE	
<b>TOTAL POPULATION TOWER 3 = 134 PEOPLE</b>	
<b>BUILDING 4</b>	
6 - STUDIO APTS @ 1.4PPU = 8.0 PEOPLE	
33 - 1 BEDROOM APTS @ 1.4PPU = 46 PEOPLE	
12 - 2 BEDROOM APTS @ 2.1PPU = 25 PEOPLE	
3 - 3 BEDROOM APTS @ 3.1PPU = 9 PEOPLE	
<b>TOTAL POPULATION TOWER 4 = 88 PEOPLE</b>	
<b>TOTAL POPULATION = 696</b>	
<b>TOTAL COMMERCIAL SPACE = 552m<sup>2</sup> (0.055ha) @ 28,000 L/ha/day</b>	

Revision	By	Appd.	YY.MM.DD	
2	REVISED AS PER CITY COMMENTS	MJS	DT	23.03.02
1	REVISED AS PER CITY COMMENTS	MJS	DT	22.07.05
0	ISSUED FOR SPA	MJS	AMP	21.06.09

File Name:	MJS	AMP	MJS	21.06.01
160401536 DB DWG	Dwn.	Chkd.	Dgn.	YY.MM.DD

### Permit-Seal

### Client/Project

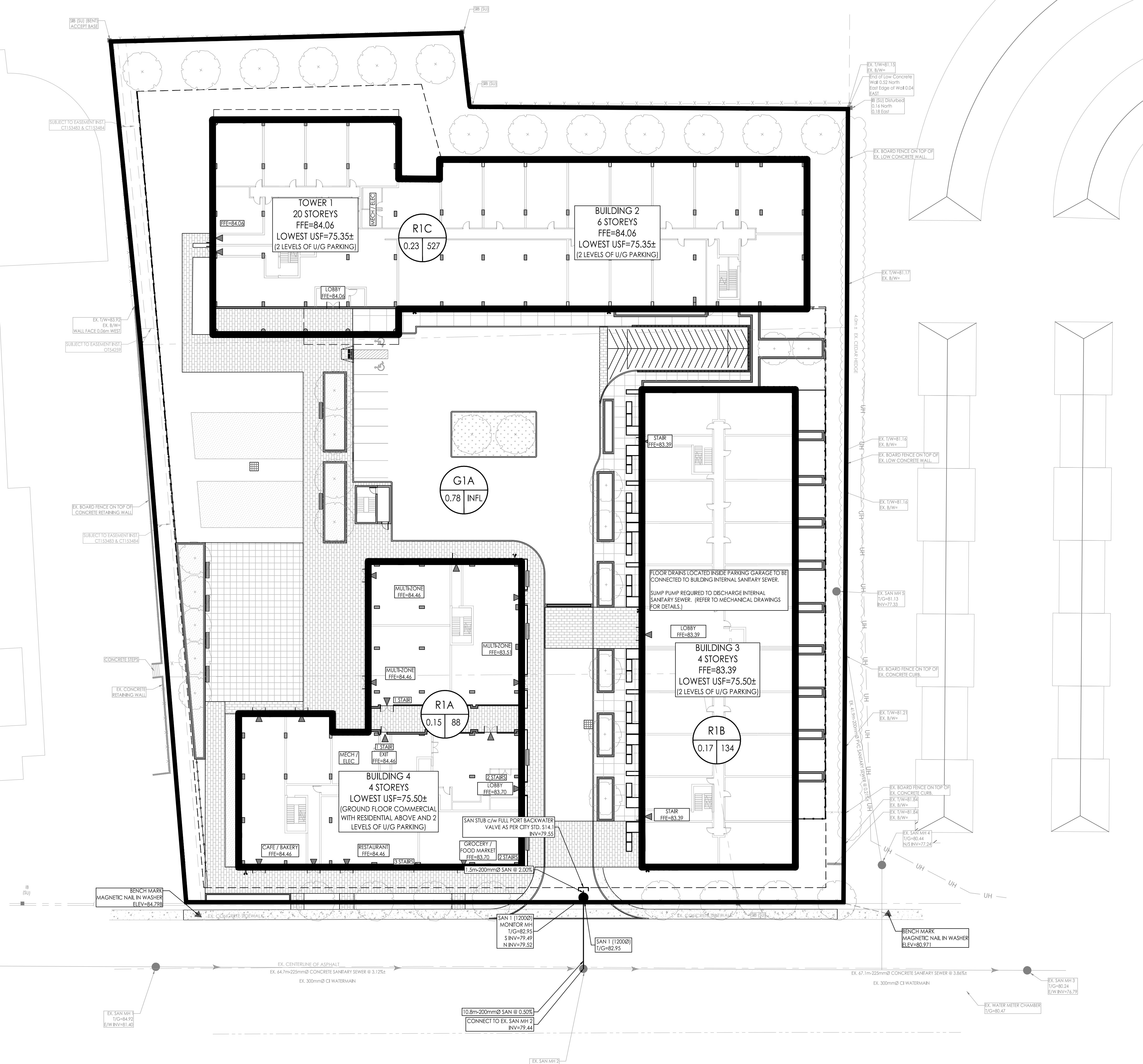
**BRIGIL HOMES**  
98 LOIS STREET  
GATINEAU, QC  
J8Y 3R7  
**MOONEY'S BAY**  
729 RIDGEWOOD AVENUE  
OTTAWA, ON, CANADA

### Title

**SANITARY DRAINAGE PLAN**

Project No.	Scale	0 3 9 15m
160401536	1:300	
Drawing No.	Sheet	Revision
SA-1	7 of 7	2

PLAN # 18552



V:\1\160401536\160401536.dwg design: drawing: 160401536 DB DWG  
2023/03/02 09:49 AM BY: JMS/DT