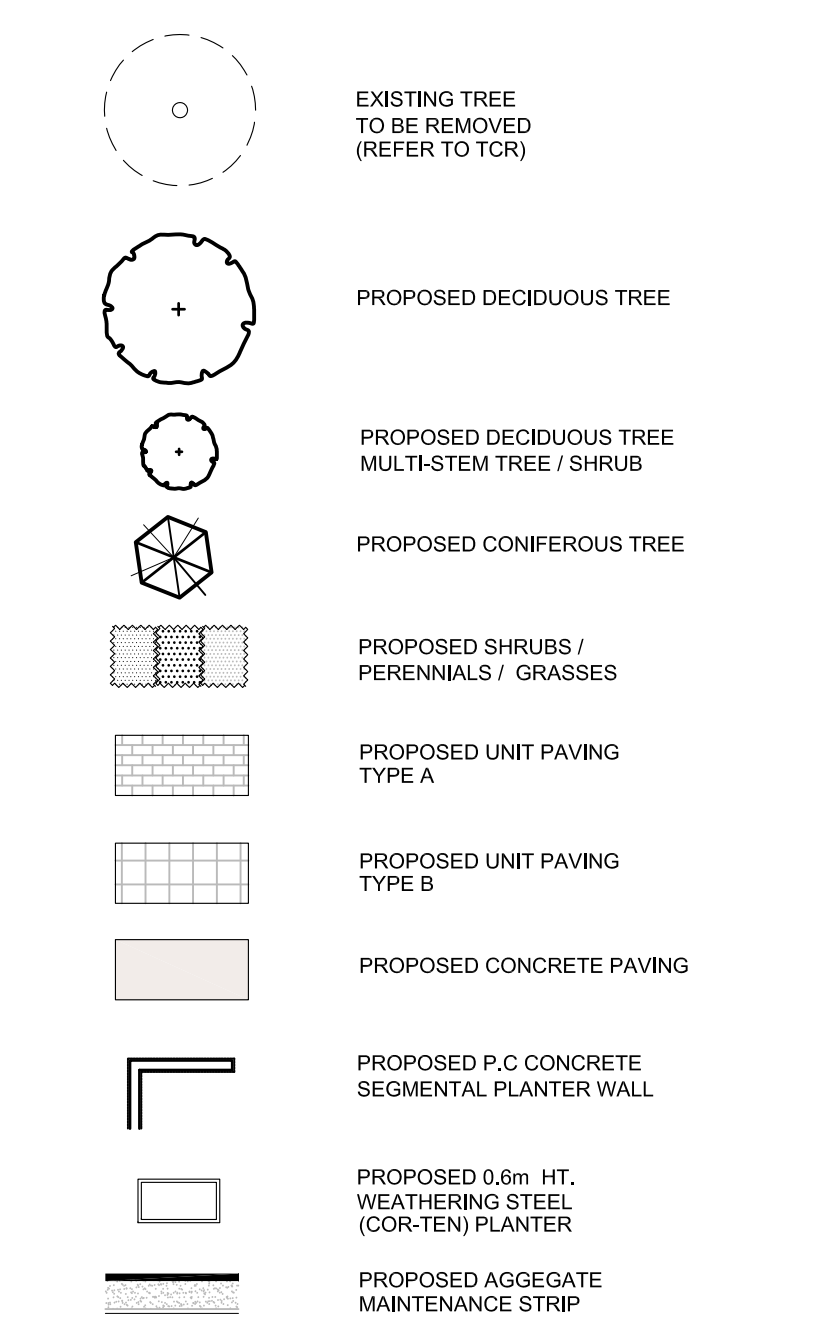


LEGEND / SYMBOL



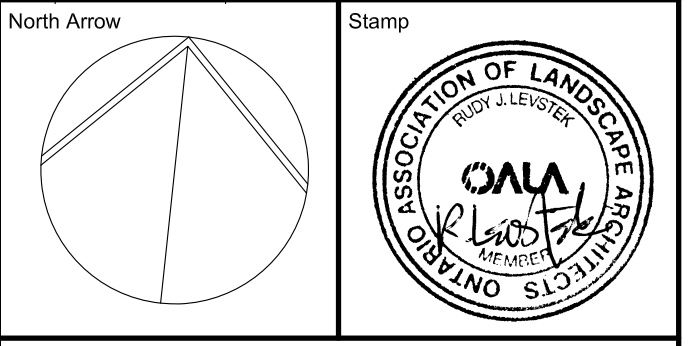
- GENERAL NOTES**
- This drawing shall be read in conjunction with all relevant Architectural, Engineering and related Drawings and Documents.
 - Refer to Engineering Drawings for Grading and Servicing.
 - Refer to Architectural Drawings for Site layout.
 - Contractor shall provide the location(s) of all services/utilities by consulting Municipal Authorities and Utility companies and shall be responsible for adequate protection from damage during construction.
 - Plant material shall be No. 1 Grade and shall comply with the Metric Guide Specifications For Nursery Stock (latest edition), published by the Canadian Nursery Trades Association.
 - Plant Material locations are **Schematic / Approximate only**. Contractor shall stake out locations on site prior to work.
 - Contractor shall guarantee all plant material for a period of one (1) full year from the date of final acceptance.
 - Shrubs shall be planted in a continuous prepared bed of 450mm depth planting soil mix covered over with a woven polypropylene weed control fabric (**LANDSCAPE FABRIC-Green-Line by Thrace-LINQ**) and 75mm depth composted pine mulch to finish grade, as specified.
 - Perennials and Ornamental Grasses shall be planted in a continuous prepared bed of 450mm depth planting soil mix covered over with 75mm depth composted pine mulch to finish grade. (**NO WEED CONTROL FABRIC**), as specified.
 - Sod areas to receive 125mm topsoil. Sod shall be No. 1 quality conforming to the Canadian Nursery Sod Growers Specification.
 - Reinstate all areas damaged or disturbed beyond the limit of Work.
 - Plant Material substitutions shall not be permitted without written approval from the Consultant.
 - Contractor shall advise Consultant a minimum of 48hrs. prior to proceeding landscape work and any required Field Reviews.
 - THIS PLAN HAS BEEN PREPARED FOR MUNICIPAL SITE PLAN APPROVAL ONLY AND MAY NOT BE USED FOR ANY OTHER PURPOSE.**

PLANT MATERIAL SCHEDULE

CODE	BOTANICAL NAME	COMMON NAME	QTY.	SIZE	REMARKS
DECIDUOUS TREES					
AC	AMELANCHIER CANADENSIS	SHADBLow SERVICEBERRY	5	50mm cal	B&B, single stem
AFJ	ACER x FREEMANNI JEFFERSRED	AUTUMN BLAZE MAPLE	6	50mm cal	B&B, single stem
AR	ACER RUBRUM	RED MAPLE	3	50mm cal	B&B, single stem
AS	ACER SACCHARUM	SUGAR MAPLE	4	50mm cal	B&B, single stem
QM	QUERCUS MACROCARPA	BUR OAK	4	50mm cal	B&B, single stem
QR	QUERCUS RUBRA	RED OAK	4	50mm cal	B&B, single stem
SR	SYRINGA RETICULATA 'IVORY SILK'	IVORY SILK JAPANESE TREE LILAC	8	50mm cal	B&B, single stem
TA	TILIA AMERICANA	AMERICAN BASSWOOD	6	50mm cal	B&B, single stem
CONIFEROUS SHRUBS					
JCO	JUNIPERUS CHINENSIS 'ONTARIO GREEN'	ONTARIO GREEN JUNIPER	27	125cm ht	potted
DECIDUOUS SHRUBS					
ACZ	AMELANCHIER CANADENSIS	SHADBLow SERVICEBERRY	16	100cm ht	B&B, multi-stem
HAA	HYDRANGEA ARBORESCENS ANNABELLE	ANNABELLE HYDRANGEA	22	50cm ht	potted, 100cm o/c
PO	PHY'SOCARPUS OPULIFOLIUS	COMMON NINEBARK	48	50cm ht	potted, 100cm o/c
RAu	RIBES AUREUM	GOLDEN CURRANT	30	50cm ht	potted, 100cm o/c
RB	ROSA BLANDA	SHRUB ROSE	60	50cm ht	potted, 100cm o/c
SJAW	SPIRAEA JAPONICA ANTHONY WATERER	ANTHONY WATERER SPIREA	34	50cm ht	potted, 100cm o/c
SJG	SPIRAEA JAPONICA GOLDMOUND	GOLDMOUND SPIREA	30	50cm ht	potted, 100cm o/c
VD	VIBURNUM DENTATUM	ARROWWOOD	58	50cm ht	potted, 100cm o/c
VL	VIBURNUM LENTAGO	NANNYBERRY	24	100cm ht	B&B, multi-stem
VINES					
PQ	PARTHENOCISSUS QUINQUEFOLIA	VIRGINIA CREEPER	97	2 yr.	potted
PERENNIALS					
Co	COREOPSIS lanceolata	COREOPSIS	170	15 cm pot	plant 60cm o/c
Ech	ECHINACEA pallida	PALE PURPLE CONEFLOWER	32	15 cm pot	plant 60cm o/c
Ger	GERANIUM maculatum	WILD GERANIUM	225	15 cm pot	plant 60cm o/c
Hem	HEMEROCALLIS 'Hyperion'	Hyperion DAYLILY	81	15 cm pot	plant 60cm o/c
Rud	RUBROCKIA fulgida 'Goldstrum'	BLACK-EYED SUSAN	167	15 cm pot	plant 60cm o/c
ORNAMENTAL GRASSES					
Cal	CALAMAGROSTIS x acutiflora 'Karl Foerster'	KARL FOERSTER REED GRASS	34	15cm pot	plant 75cm o/c
Pv	PANICUM virgatum	SWITCH GRASS	41	15cm pot	plant 75cm o/c
Sor	SORGHASTRUM nutans	INDIAN GRASS	38	15cm pot	plant 75cm o/c
Spo	SPOROBOLUS heterolepis	PRAIRIE DROPSEED	50	15cm pot	plant 75cm o/c

FOR APPROVAL ONLY

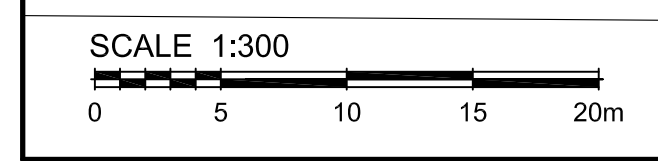
no.	date	revision
5.	FEB. 21/23	RE-ISSUE FOR SPA
4.	JULY 11/22	RE-ISSUE FOR SPA
3.	JUNE 8/21	CHANGES PER SITE PLAN
2.	MAY 28/21	ISSUE FOR SPA (REVIEW)
1.	MAY 27/21	ISSUE FOR COORDINATION / REVIEW



Contractor shall check and verify all dimensions on site and report all errors and/or omissions to the Consultant.
 Work to be done in accordance with all applicable codes and by-laws.
 Do not scale Drawing.
 This Drawing shall not be used for construction until signed by the Consultant.
 Copyright reserved. This Drawing is the exclusive property of Levstek Consultants Inc. and shall not be used without consent.

Consultant
LEVSTEK CONSULTANTS
 LANDSCAPE ARCHITECTS
 5871 Hugh Crescent - Ottawa, Ontario - K8A 2W8
 613 - 826 - 9518

Client
brigil
 Project
MOONEY'S BAY
 729 RIDGEWOOD AVENUE
 Drawing Title
LANDSCAPE PLAN
 Drawn: MGB Date: APR. 2021 Drawing No.:
 Scale: 1:300 Project No.: 1180 L1.01



D07-12-21-0089