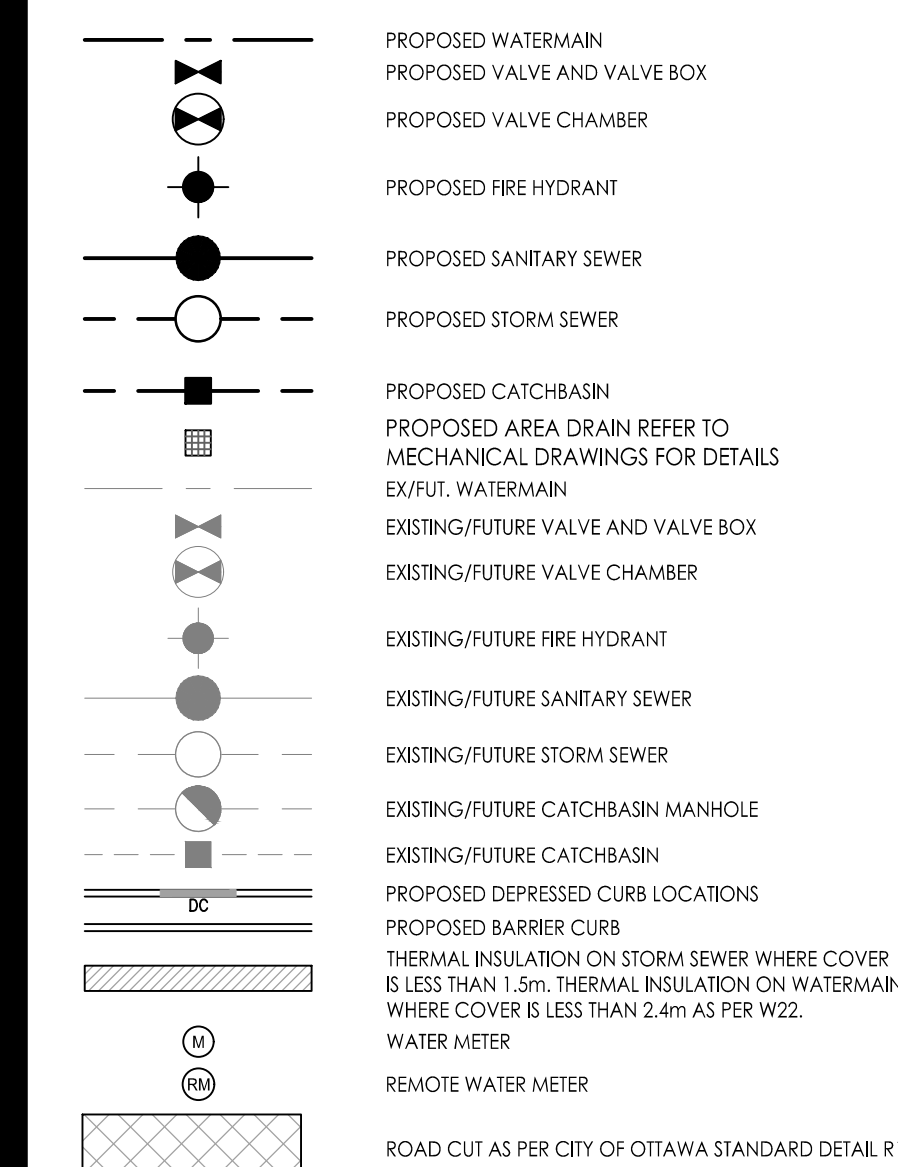


Stantec Consulting Ltd.  
400 - 1331 Clyde Avenue  
Ottawa ON  
Tel. 613.722.4420  
www.stantec.com

### Copyright Reserved

The Contractor shall verify and be responsible for all dimensions. DO NOT scale the drawing - any errors or omissions shall be reported to Stantec without delay. The Copyrights to all designs and drawings are the property of Stantec. Reproduction or use for any purpose other than that authorized by Stantec is forbidden.

### Legend



### Notes

- ALL CATCH BASINS AND TRENCH DRAINS TO BE CONNECTED TO INTERNAL PLUMBING AND COLLECTED IN STORM WATER MANAGEMENT CISTERN. INSTALLATION BY OTHERS.
- FINAL METER AND REMOTE METER LOCATIONS TO BE CONFIRMED BY MECHANICAL CONSULTANT.
- THE LOCATION OF UTILITIES IS APPROXIMATE ONLY AND THE EXACT LOCATION SHOULD BE DETERMINED BY CONSULTING THE MUNICIPAL AUTHORITIES AND UTILITY COMPANIES CONCERNED. THE CONTRACTOR SHALL PROVE THE LOCATION OF UTILITIES AND SHALL BE RESPONSIBLE FOR THEIR PROTECTION AND THE IMPLEMENTATION OF ANY NECESSARY PROCEDURES CALLED FOR IN THE APPROPRIATE STANDARDS AND REGULATIONS.
- INTERNAL PLUMBING AND SUMP PUMPS TO BE DESIGNED BY THE MECHANICAL CONSULTANT.
- STORMWATER MANAGEMENT TO BE PROVIDED THROUGH A 50m<sup>3</sup> CISTERN LOCATED IN THE UNDERGROUND PARKING.
- MAX. CISTERN RELEASE RATE TO STORM SEWER = 166.2 L/s
- BOOSTER PUMPS TO BE PROVIDED TO MAINTAIN MINIMUM PRESSURES FOR TOWERS 3 STOREYS AND HIGHER.
- SUMP PUMP REQUIRED TO DISCHARGE TO INTERNAL SANITARY SEWER. (REFER TO MECHANICAL DRAWINGS FOR DETAILS)
- FLOOR DRAINS LOCATED INSIDE PARKING GARAGE TO BE CONNECTED TO BUILDING INTERNAL SANITARY SEWER.
- USF TO BE CONFIRMED BY THE STRUCTURAL CONSULTANT.

Revision	By	Appd.	YY.MM.DD	
1	REVISED AS PER CITY COMMENTS	MJS	DT	22.07.05
0	ISSUED FOR SPA	MJS	AMP	21.06.09

File Name:	MJS	AMP	MJS	21.06.01
160401536 DB DWG	Dwn.	Chkd.	Dgn.	YY.MM.DD

Permit-Seal

Client/Project  
**BRIGEL HOMES**  
 98 LOIS STREET  
 GATINEAU, QC  
 J8Y 3R7  
**MOONEY'S BAY**  
 729 RIDGEWOOD AVENUE  
 OTTAWA, ON, CANADA

Title  
**SITE SERVICING PLAN**

Project No. 160401536  
 Scale 1:300  
 Drawing No. Sheet  
 Revision

SSP-1 3 of 7 1  
 PLAN # 18552

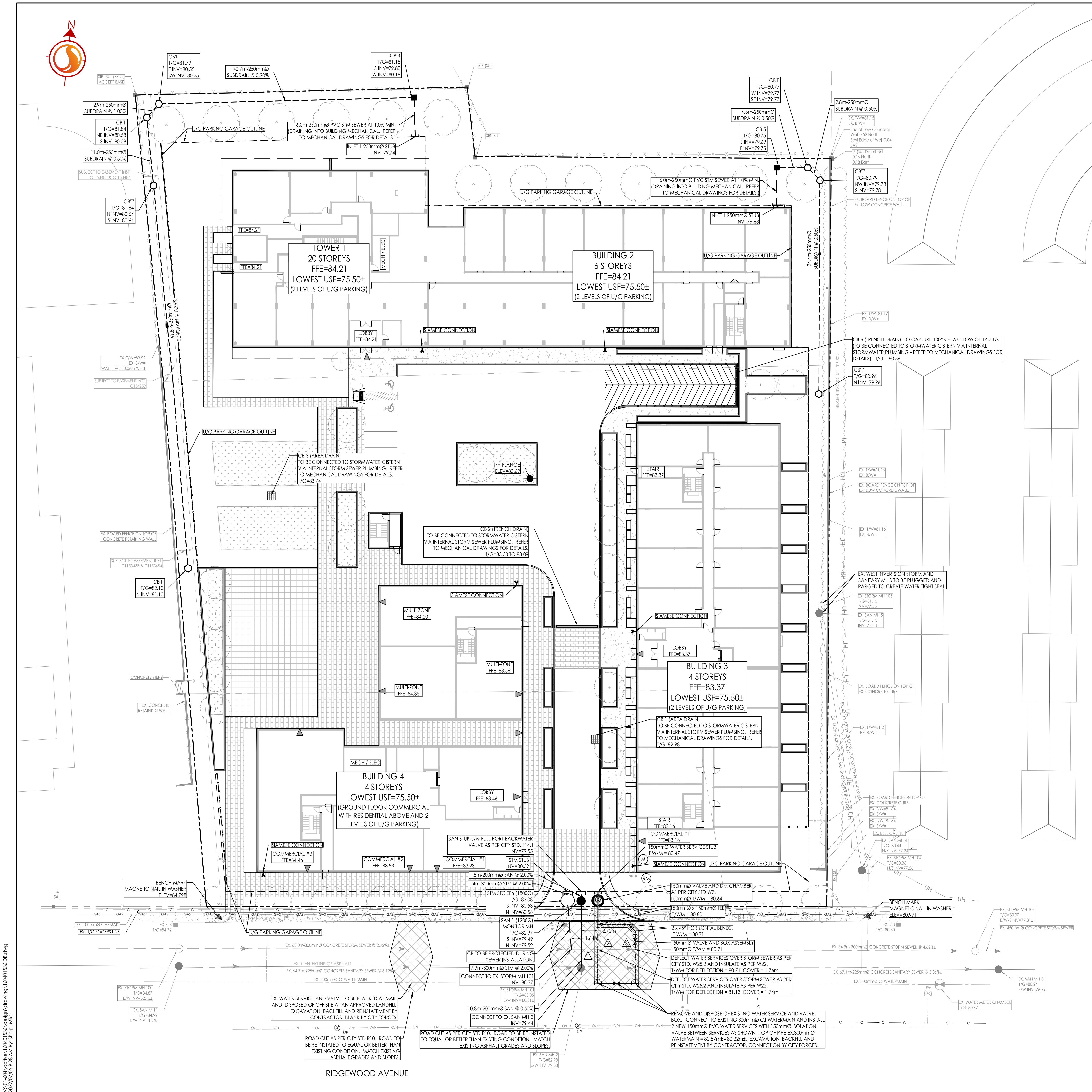
### SCHEDULE OF ROOF RELEASE RATES

DRAIN TYPE	TRIBUTARY AREA ID	# OF DRAINS	100YR Head (m)	100YR RELEASE RATE (L/s)
WATTS ACCUFLOW (50% OPEN)	ROOF 1	4	0.146	4.9
WATTS ACCUFLOW (100% OPEN)	ROOF 2	4	0.117	5.9
WATTS ACCUFLOW (75% OPEN)	ROOF 3	6	0.146	9.2
WATTS ACCUFLOW (100% OPEN)	ROOF 4	4	0.148	7.5

### SEWER AND WATERMAIN CROSSING TABLE

CROSSING	SIM INV	SIM OBV	SAN INV	SAN OBV	WTR TOP	WTR BIM
▲	80.24 (80.17)	80.54 (80.41)	79.47	79.67	81.13	80.98
▲	80.11 (80.04)	80.41 (80.48)	79.28 (79.21)	79.51 (79.58)	81.13	80.98
▲	79.84 (79.77)	80.14 (80.21)	79.04 (78.97)	79.27 (79.34)	80.86	80.71

\* BRACKETS DENOTE ADJUSTED VALUE WITH CONCRETE PIPE THICKNESS



\\s01\proj\2022\160401536\160401536 DB.dwg  
2022/07/05 09:28 AM BY: P. J. WILSON