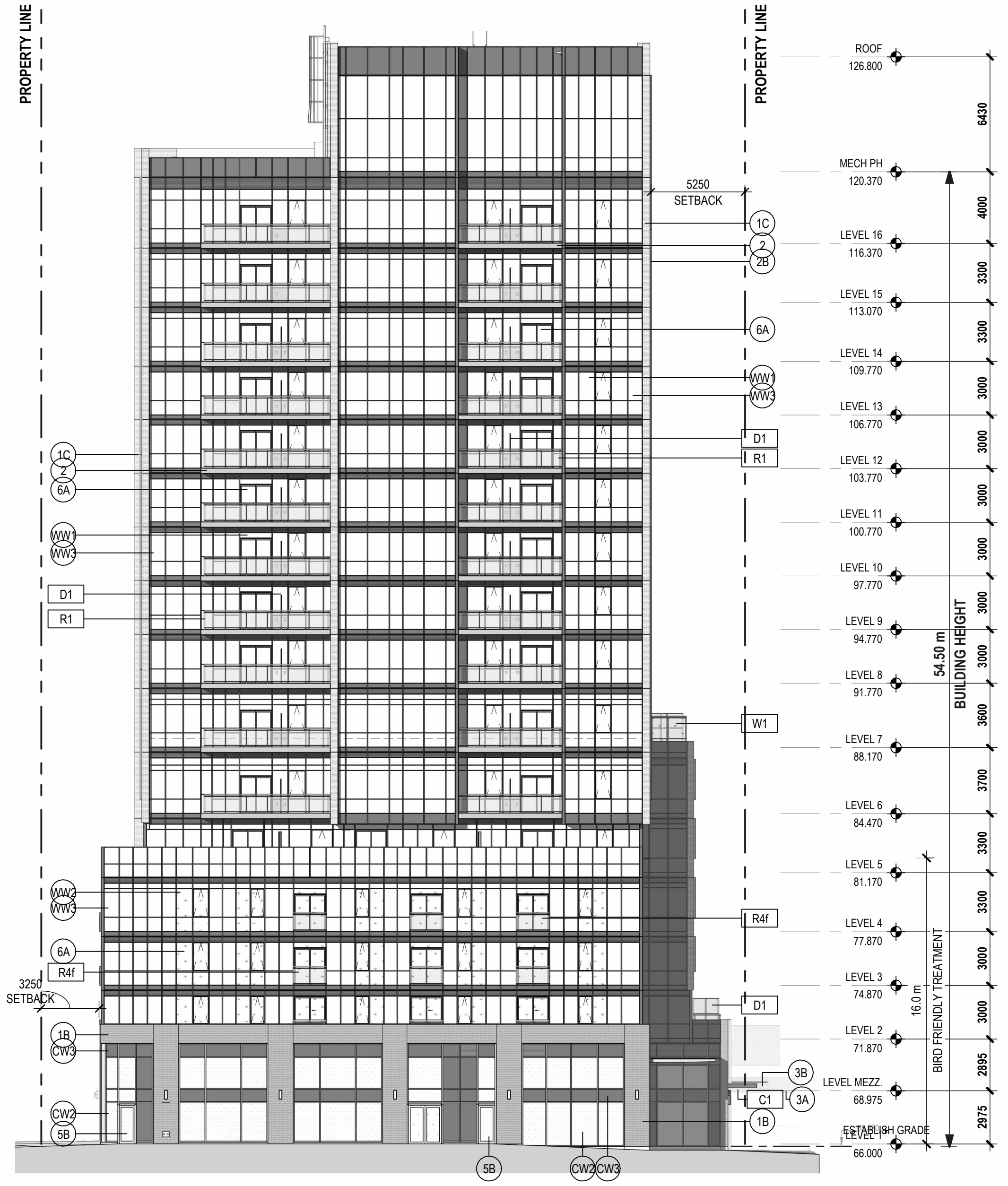
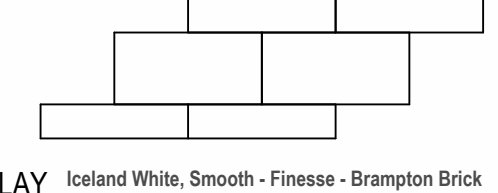


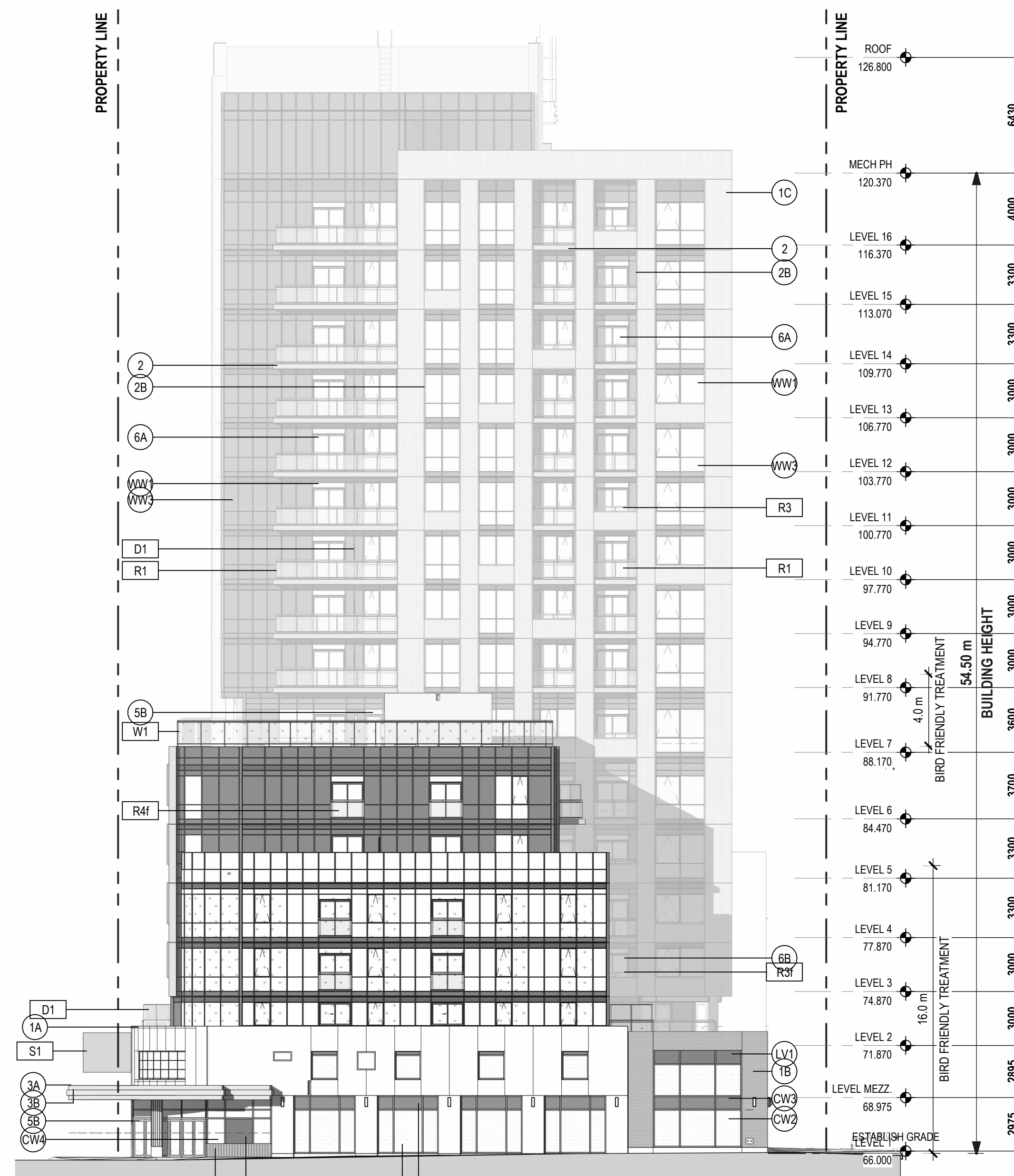
MATERIAL SCHEDULE

- 1A ARCHITECTURAL PRECAST PANEL - STUCCO WHITE
- 1B MASONRY - LIGHT BEIGE STONE Canvas Beige - Origin Series - Brampton Brick
80x60x230 / 80x180x230. Pattern shown on the right
- 1C ARCHITECTURAL BRICK INLAY PRECAST PANEL - LIGHT GREY BRICK INLAY Island White, Smooth - Finlock - Brampton Brick
Metric Norman 80x57x230
- 2 PREFINISHED METAL SLAB COVER - STAINLESS STEEL
- 2B PREFINISHED FEATURE METAL FRAME - GREY
- 3A PREFINISHED METAL PANEL - STAINLESS STEEL
- 3B PREFINISHED METAL PANEL W/ LED LIGHTING
- 4 OVERHEAD GARAGE DOOR - RUBBER HIGH SPEED
- 5A GLAZED ALUMINUM SWING DOOR - RETAIL, RETAIL EXIT, RESIDENTIAL, AMENITY
FRAME COLOUR: *Acrylar CHARCOAL GRAY UC7X1080*
- 5B GLAZED ALUMINUM SWING DOOR WITH BIRD FRIENDLY FRIT PATTERN - RETAIL, RETAIL EXIT, RESIDENTIAL, AMENITY, FRAME COLOUR
- 6A GLAZED ALUMINUM SLIDING DOOR - RESIDENTIAL
FRAME COLOUR: *Acrylar CHARCOAL GRAY UC7X1080*
- 6B GLAZED ALUMINUM SLIDING DOOR WITH BIRD FRIENDLY FRIT PATTERN - RESIDENTIAL
FRAME COLOUR: *Acrylar CHARCOAL GRAY UC7X1080*
- 7 HOLLOW METAL DOOR - ENTRANCE, EXIT, SERVICE
FRAME COLOUR: *Acrylar CHARCOAL GRAY UC7X1080*
- 8 FLUTED METAL PANEL - WHITE
- CW1 PREFINISHED CURTAIN WALL SYSTEM CLEAR VISION PANEL (IGU-1) Super Natural 68 Ultra Clear
FRAME COLOUR: *Acrylar CHARCOAL GRAY UC7X1080*
- CW2 PREFINISHED CURTAIN WALL SYSTEM CLEAR VISION PANEL Super Natural 68 Ultra Clear - WITH BIRD FRIENDLY FRITTED PATTERN (IGU-2); FRAME COLOUR: *Acrylar CHARCOAL GRAY UC7X1080*
- CW3 PREFINISHED CURTAIN WALL SYSTEMS GLASS SPANDREL - Evening Dove - Pinkington Clear
FRAME COLOUR: *Acrylar CHARCOAL GRAY UC7X1080*
- CW4 PREFINISHED CURTAIN WALL SYSTEMS GLASS SPANDREL - Midnight - Pinkington Clear
FRAME COLOUR: *Acrylar CHARCOAL GRAY UC7X1080*
- CW5 PREFINISHED CURTAIN WALL SYSTEM - WITH ALUMINUM COMPOSITE METAL SPANDREL PANEL (MS2) PANEL; FRAME COLOUR: *Acrylar CHARCOAL GRAY UC7X1080*
- CW6 PREFINISHED CURTAIN WALL SYSTEMS GLASS SPANDREL -
FRAME COLOUR: *Acrylar CHARCOAL GRAY UC7X1080*
- WW1 PREFINISHED WINDOW WALL SYSTEM GUARDIAN VISION PANEL - Super Natural 68 Crystal Blue
FRAME COLOUR: *Acrylar CHARCOAL GRAY UC7X1080*
- WW2 PREFINISHED WINDOW WALL SYSTEM GUARDIAN VISION PANEL - Super Natural 68 Crystal Blue - WITH BIRD FRIENDLY FRITTED PATTERN
FRAME COLOUR: *Acrylar CHARCOAL GRAY UC7X1080*
- WW3 PREFINISHED CURTAIN WALL SYSTEMS GLASS SPANDREL - Evening Dove - Pinkington Clear
FRAME COLOUR: *Acrylar CHARCOAL GRAY UC7X1080*
- WW4 PREFINISHED WINDOW WALL SYSTEM - WITH ALUMINUM COMPOSITE METAL SPANDREL PANEL (MS) AND FRAME COLOUR: *Acrylar CHARCOAL GRAY UC7X1080*
- LV1 PREFINISHED ARCHITECTURAL LOUVRE - GRAY
FRAME COLOUR: *Acrylar CHARCOAL GRAY UC7X1080*
- LV2 PREFINISHED MECHANICAL LOUVRE - GRAY
FRAME COLOUR: *Acrylar CHARCOAL GRAY UC7X1080*
- C1 LAMINATED GLAZED CANOPY
- D1 PREFINISHED ALUMINUM BALCONY/TERRACE DIVIDER W/ FROSTED GLASS
FRAME COLOUR: *Acrylar CHARCOAL GRAY UC7X1080*
- S1 SIGNAGE
- R1 PREFINISHED ALUMINUM RAILING SYSTEM - SunGuard Neutral 50 on Clear Glass
FRAME COLOUR: *Acrylar CHARCOAL GRAY UC7X1080*
- R1F PREFINISHED ALUMINUM RAILING SYSTEM - SunGuard Neutral 50 on Clear Glass - WITH BIRD FRIENDLY FRITTED PATTERN
FRAME COLOUR: *Acrylar CHARCOAL GRAY UC7X1080*
- R2F CURB MOUNTED RAILING SYSTEM - SunGuard Neutral 50 on Clear Glass - WITH BIRD FRIENDLY FRITTED PATTERN
FRAME COLOUR: *Acrylar CHARCOAL GRAY UC7X1080*
- R3 PARAPET MOUNTED RAILING SYSTEM - SunGuard Neutral 50 on Clear Glass
FRAME COLOUR: *Acrylar CHARCOAL GRAY UC7X1080*
- R3F PARAPET MOUNTED RAILING SYSTEM - SunGuard Neutral 50 on Clear Glass - WITH BIRD FRIENDLY FRITTED PATTERN
FRAME COLOUR: *Acrylar CHARCOAL GRAY UC7X1080*
- R4a JULIET BALCONY RAILING SYSTEM - SunGuard Neutral 50 on Clear Glass
FRAME COLOUR: *Acrylar CHARCOAL GRAY UC7X1080*
- R4b JULIET BALCONY RAILING SYSTEM - SHORT HEIGHT SunGuard Neutral 50 on Clear Glass
FRAME COLOUR: *Acrylar CHARCOAL GRAY UC7X1080*
- R4f JULIET BALCONY RAILING SYSTEM - SunGuard Neutral 50 on Clear Glass - WITH BIRD FRIENDLY FRITTED - FULL HEIGHT
FRAME COLOUR: *Acrylar CHARCOAL GRAY UC7X1080*
- W1 CURB MOUNTED WIND SCREEN SYSTEM

Material Legend
SCALE: 1: 200



3 EAST ELEVATION
SCALE: 1: 200



4 WEST ELEVATION
SCALE: 1: 200



1 SOUTH ELEVATION
SCALE: 1: 200



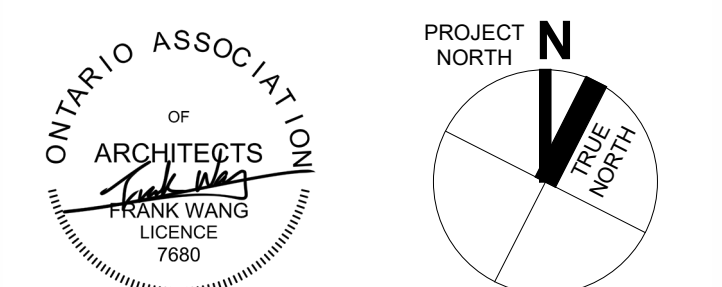
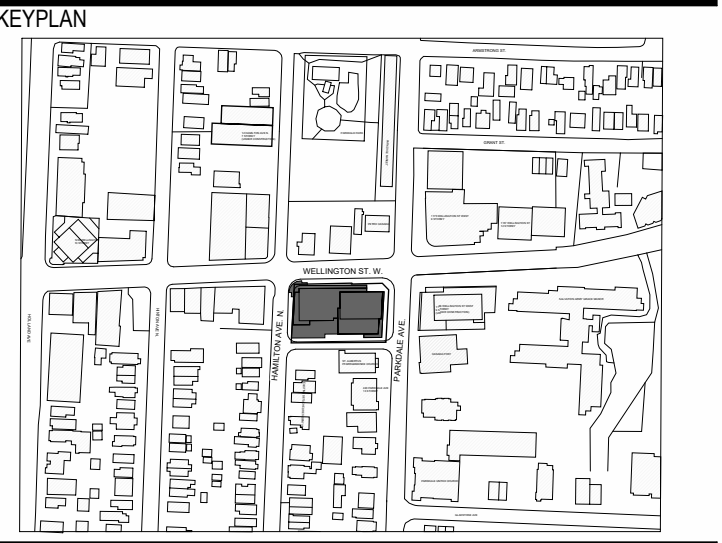
2 NORTH ELEVATION
SCALE: 1: 200

DIALOG

- ISSUED FOR:
- 1 2021-06-25 ISSUED FOR OPAZBLA
 - 2 2021-11-25 RE-ISSUED FOR OPAZBLA
 - 3 2022-06-29 ISSUED FOR SPA
 - 4 2022-12-09 RE-ISSUED FOR SPA
 - 5 2023-04-19 RE-ISSUED FOR SPA
 - 6 2024-11-08 RE-ISSUED FOR CITY AND OLT COORDINATION
 - 7 2024-11-21 ISSUED FOR FINAL SPA
 - 8 2024-11-29 ISSUED FOR FINAL SPA

METRIC
THIS DRAWING IS COPYRIGHTED AND MUST NOT BE USED, REPRODUCED, OR REVISED WITHOUT WRITTEN PERMISSION.
ALL DIMENSIONS ARE IN MILLIMETERS UNLESS OTHERWISE NOTED.
VERIFY DIMENSIONS.
DO NOT SCALE THIS DRAWING.
REPORT INCONSISTENCIES AND OMISSIONS TO THE CONSULTANT FOR CLARIFICATION BEFORE COMMENCING WITH THE WORK.
DEVIATIONS FROM THE CONTRACT DOCUMENTS WITHOUT WRITTEN APPROVAL FROM THE CONSULTANT ARE SUBJECT TO CORRECTION AT THE CONTRACTOR'S EXPENSE.

- CLIENT**
WELLINGTON LIMITED PARTNERSHIP
200-180 KENT STREET
OTTAWA, ON K1P 0P6
Tel: 613-230-7051
- ARCHITECT**
DIALOG
35 JOHN STREET, SUITE 600
TORONTO, ON CANADA M5V 3G6
Tel: 416-996-0220
- URBAN PLANNER**
PETERSON
358 COOPER ST. SUITE 300
OTTAWA, ON K2P 2P7
Tel: 613-720-5709
- LANDSCAPE ARCHITECT**
DIALOG
35 JOHN STREET, SUITE 600
TORONTO, ON CANADA M5V 3G6
Tel: 416-996-0220
- ENVIRONMENTAL/GEOTECHNICAL**
TERRESCAPE ENVIRONMENTAL
20 GARDINARA ROAD, UNIT 1
OTTAWA, ON K2E 6B3
Tel: 613-745-5471
- HERITAGE CONSULTANT**
DIALOG
222 LAURIER AVENUE EAST, STUDIO 201
OTTAWA, ON K1P 6P7
Tel: 613-244-2323
- CIVIL ENGINEER**
DIALOG
120 BERBROAD, SUITE 103
OTTAWA, ON K2E 1E9
Tel: 613-836-0862
- TRAFFIC CONSULTANT**
CGH TRANSPORTATION
8 PLAZA COURT
OTTAWA, ON K2H 7M1
Tel: 613-689-3797
- SURVEY**
STANTEC
1331 COLYER AVE, SUITE 400
OTTAWA, ON K2C 3S4
Tel: 613-722-4425
- NOISE/WIND CONSULTANT**
GRADIENT WIND
127 WALGREEN ROAD
OTTAWA, ON K2A 1L3
Tel: 613-836-0934



1186-1194 WELLINGTON ST W

1186-1194 Wellington St W
Ottawa, ON K1Y 2Z5

BUILDING ELEVATIONS

DRAWN: Author
PLOT DATE: 11/28/2024 3:40:13 PM
CHECKED: Checker

SP07

ABXXXXXX - 2002323

CITY PLAN No.: 18573
CITY FILE No.: D07-12-22-0150