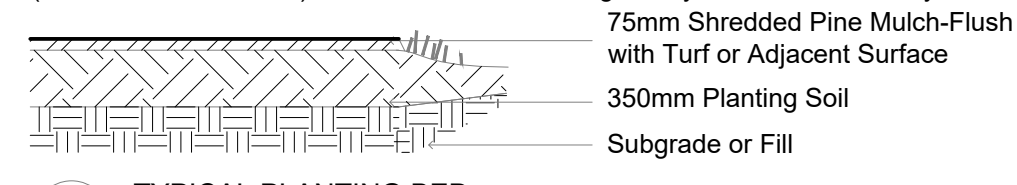
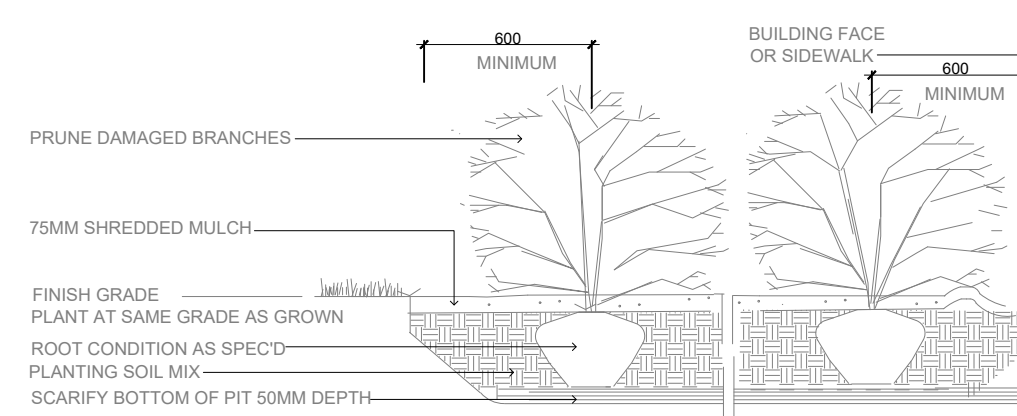


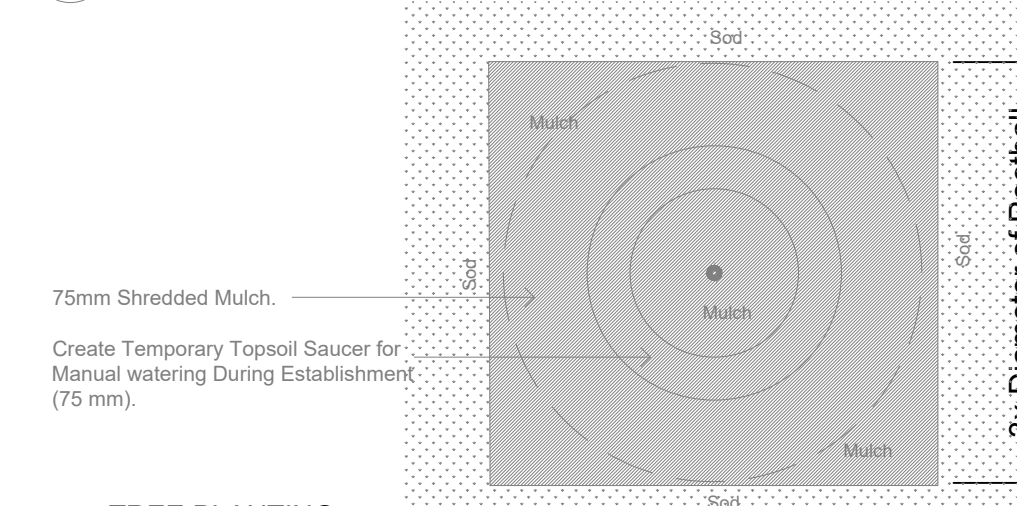
During Excavation/Bed Preparation if Extreme Conditions are Encountered (Water, Rock, Gravel...) that Could Effect Planting, Notify GJALA Immediately.



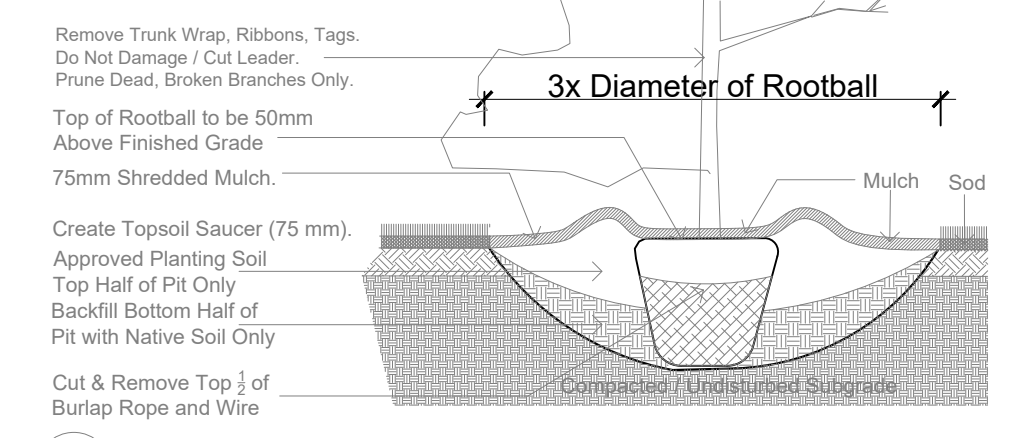
TYPICAL PLANTING BED NTS



SHRUB PLANTING NTS



TREE PLANTING Plan



TREE PLANTING Section NTS

TREES - 770-774 Bronson Avenue & 557 Cambridge Street

Code	Qty.	Botanical Name	Common Name	Size	Condition
AG	1	Aesculus glabra	Ohio Buckeye	50mm cal	B + B specimen
AR	1	Acer rubrum	Red Maple	60mm cal	B + B specimen
AS	1	Acer saccharum	Sugar Maple	60mm cal	B + B specimen
BP	1	Betula papyrifera	Paper Birch	60mm cal	B + B specimen
CC	1	Carya cordiformis	Bitternut Hickory	50mm cal	B + B specimen
CO	3	Celtis occidentalis	Common Hackberry	70mm cal	B + B specimen
GB	3	Ginkgo biloba	Maidenhair Tree	70mm cal	B + B specimen
GD	1	Gymnocladus dioica	Kentucky Coffee Tree	60mm cal	B + B specimen
OV	1	Ostrya virginiana	Hophornbeam Ironwood	60mm cal	B + B specimen
QM	1	Quercus macrocarpa	Burr Oak	60mm cal	B + B specimen
PG	7	Picea glauca	White Spruce	1.5m Ht.	B + B specimen

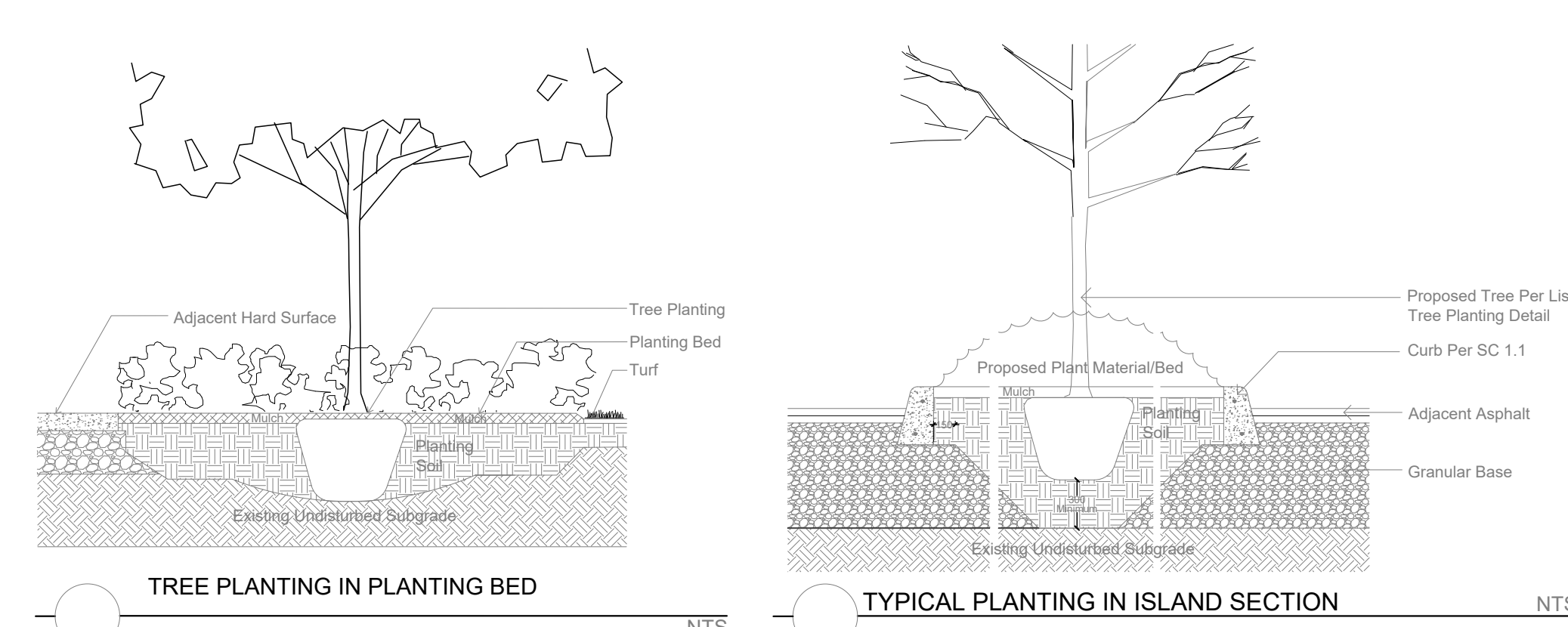
SHRUBS - 770-774 Bronson Avenue & 557 Cambridge Street

Code	Qty.	Botanical Name	Common Name	Size	Condition
ac	35	Amelanchier canadensis	Serviceberry	100cm Ht.	Pot
ca	15	Cornus alternifolia	Pagoda Dogwood	60cm Ht.	Pot
cr	35	Cornus racemosa	Grey Dogwood	100cm Ht.	Pot
HK	125	Hypericum kalmianum	St. John's Wort	30cm Ht.	Pot
HP	125	Hypericum prolificum	Shrubby St. John's Wort	50cm Ht.	Pot
SA	100	Spiraea alba	Meadowsweet	60cm Ht.	Pot
SB	150	Spiraea bumalda 'Dart's Red'	Dart's Red Spirea	40cm Ht.	Pot
sv	35	Syringa vulgaris 'Alba'	White Common Lilac	100cm Ht.	Pot
vi	35	Viburnum lentago	Nannyberry	90cm Ht.	Pot

PERENNIALS / GROUNDCOVER - 770-774 Bronson Avenue & 557 Cambridge Street

Code	Qty.	Botanical Name	Common Name	Condition
AU	250	Arctostaphylos uva ursi	Bearberry	9cm Pot
GM	425	Geranium macrorrhizum	Bigroot Geranium	9cm Pot
GP	425	Geranium psilostemon 'Gerwat'	Rozanne Geranium	9cm Pot
PV	150	Panicum virgatum	Switch Grass	9cm Pot

PLANT LIST QUANTITIES ARE GREATER THAN PLAN QUANTITIES. ADDITIONAL PLANTS NOT SHOWN ON THE PLAN ARE FOR SITE PLACEMENT BY GJA INC.



TREE PLANTING IN PLANTING BED NTS
TYPICAL PLANTING IN ISLAND SECTION NTS

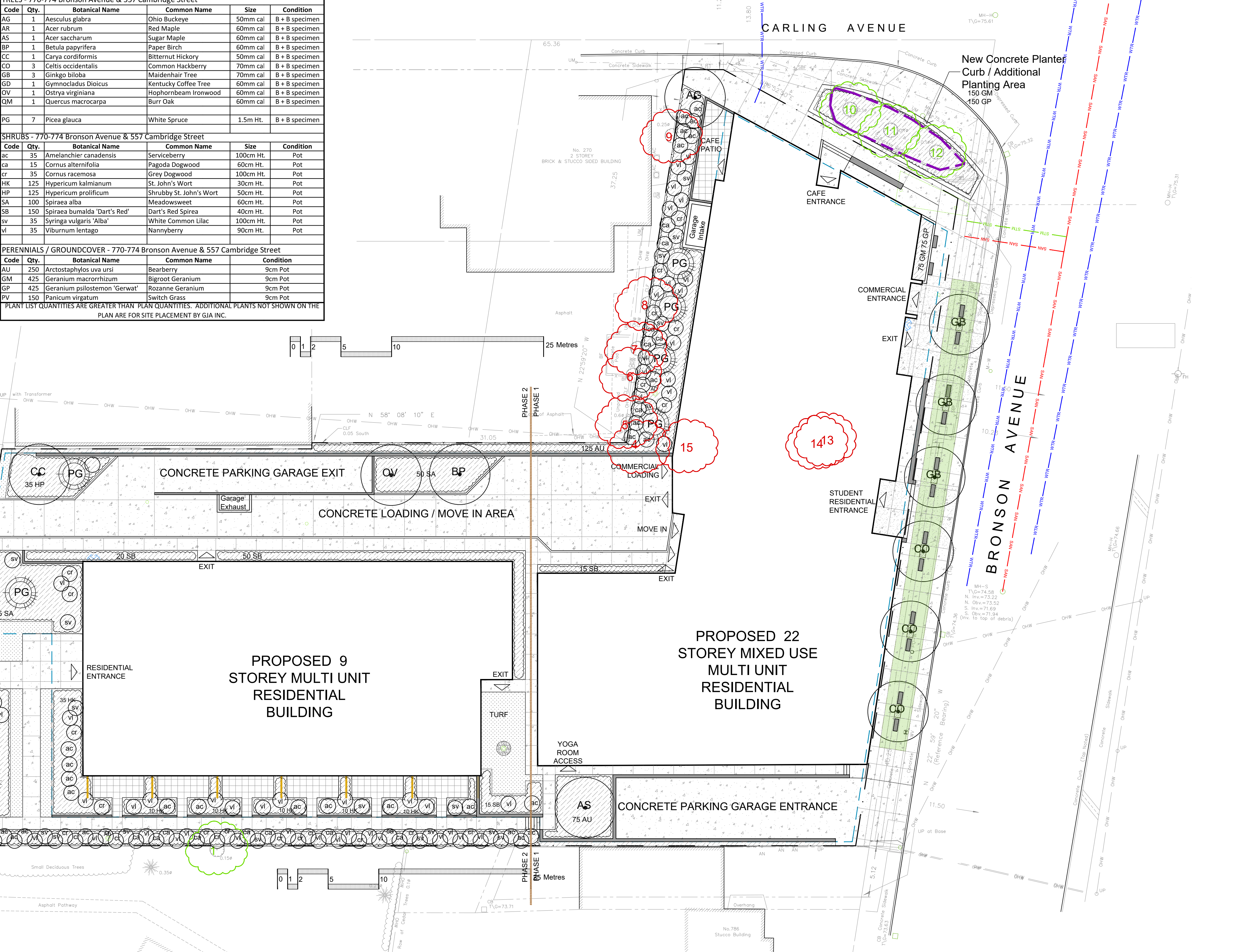
TURF AREAS TO BE SOD C/W 150MM DEPTH TOPSOIL ON APPROVED SUBGRADE | SOD TO BE #1 GRADE TURFGRASS NURSERY SOD PER NSGA - Fine Fescue/Kentucky Bluegrass Sod | PLANTING MIX TO BE APPROVED BY LANDSCAPE ARCHITECT | PLANT MATERIAL TO MEET CNLA STANDARDS/BE APPROVED BY LANDSCAPE ARCHITECT PRIOR TO PLANTING | ALL MATERIALS & WORK TO BE MAINTAINED UNTIL FINAL ACCEPTANCE. (MOWING TURF, WEEDING BEDS, WATERING TURF & PLANTS) & INCLUDE 1 YEAR WARRANTY FROM DATE OF FINAL ACCEPTANCE | PROVIDE WATERING OF ALL PLANT MATERIAL AS REQUIRED FOR PROPER ESTABLISHMENT, UNTIL END OF WARRANTY PERIOD | REFER TO CIVIL ENGINEER'S DRAWING FOR ELEVATIONS / GRADING |

The Landscape Plan is to be read in conjunction with the grading, servicing, site and survey plan | Bare root material to be planted in season only | All plant material locations to be staked on site by the landscape contractor and checked by the landscape architect prior to planting | All trees to be preserved on or directly adjacent to the site will be protected | Plant material are to be installed a minimum of: 3.0m away from any part of any hydro transformer, 3.0m corridor between a fire hydrant and the curb, a 2.5m radius beside or behind a fire hydrant, 2.0m from any servicing/utility line or structure |

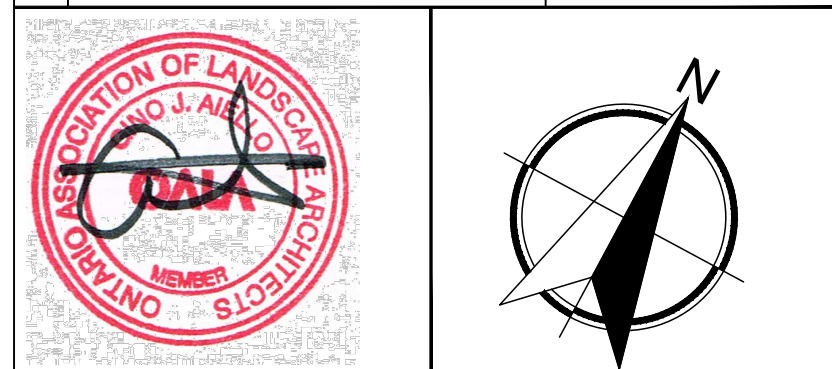
Drawing Remains the Property of/Copyright Reserved by Gino J. Aiello Landscape Architect. Do Not Use or Reproduce Without Approval of Gino J. Aiello. NOT To Be Used For Construction Unless indicated by Revision: "FOR LANDSCAPE CONSTRUCTION". Contractor is Responsible for Verification of Site Locations of all Utilities. Report any Discrepancies Between Site and Drawing Immediately to Gino J. Aiello. Do NOT Proceed Until Clarified.

LANDSCAPE PLAN LEGEND

- Coniferous Tree
- Deciduous Tree
- Planting Bed
- Soil Cell
- Turf
- Concrete Paving 1
- Concrete Paving 2
- Pavers
- Retaining Wall
- Limit of Parking Garage Below
- FD Siamese Connection
- REFER TO TCR BY IFS**
- Existing Tree to Remain
- Existing Tree to be Removed
- Protection for Existing Trees
- BELOW GRADE SERVICES REFER TO CIVIL /CUP**
- U/G Water Service
- U/G Storm Service
- U/G Sanitary Service
- O/H Hydro Service



No.	Revision	Date
2	SECOND SUBMISSION SPC	DECEMBER 15 2022
1	FIRST SUBMISSION SPC	MARCH 5 2021
0	FOR REVIEW / COORDINATION	JAN/FEB. 2021



Property Owner: **KATASA Group**
Katasa Groupe + Développement 301-69 Jean-Proulx Gatineau, Quebec J8Z 1W2 Canada

Gino J. Aiello | landscape architect GJALA.com
GJA Inc. Gino@GJALA.com (613) 286 5130
110 Dabroy Road Unit # 9 | Ottawa Ontario K2T 0C2

Project: **Mixed Use Residential/Retail Building**
770-774 Bronson Avenue, 557 Cambridge Street

Drawing: **Landscape Plan**

DECEMBER 2020 Sheet Number
1:200 **L1**

D07-12-21-0108