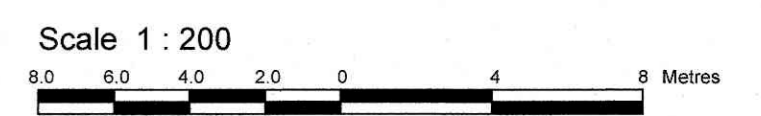


CARLING AVENUE
REGIONAL ROAD No. 38

TOPOGRAPHICAL PLAN OF SURVEY OF

ALL OF LOTS 3, 4, 37
AND PART OF LOTS 1, 2, 38
REGISTERED PLAN 28
CITY OF OTTAWA

Surveyed by Annis, O'Sullivan, Vollebek Ltd.



Surveyor's Certificate
I CERTIFY THAT:
1. This survey and plan are correct and in accordance with the Survey Act and the Surveyors Act and the regulations made under them.
2. The survey was completed on the 21st day of August, 2020.

August 21, 2020
Date
Andrew J. Broxham
Ontario Land Surveyor

Notes & Legend

- Denotes
- Survey Monument Planted
 - Survey Monument Found
 - SIB Standard Iron Bar
 - SSIB Short Standard Iron Bar
 - IB Iron Bar
 - CP Concrete Pin
 - CC Cull Cross
 - Survey Monument 0.3 Long
 - (WIT) Witness
 - (AOS) Annis, O'Sullivan, Vollebek Ltd.
 - Meas. Measured
 - (P1) Plan 5R-14360
 - (P2) Plan 5R-13332
 - (P3) (1952) Plan March 23, 2015
 - (P4) (AOC) Plan September 6, 2013
 - (P5) Registered Plan 28
 - (P6) Plan 4R-27771
 - (P7) Plan 4R-31025
 - (FH) Fire Hydrant
 - OHW Overhead Wires
 - CB Catch Basin
 - PO-Wood Pole
 - +55.00 Location of Elevations
 - +65.00 Location of Elevations (Top of Curb)
 - +65.00 Location of Elevations (Top of Wall)
 - T/G Top of Grade
 - C/L Centreline
 - Inv. Invert
 - Obv. Obvert
 - OHW Overhead Wires
 - UP Utility Pole
 - AN Anchor
 - Property Line
 - TB Terminal Box
 - TB-B Bell Terminal Box
 - WV Water Valve
 - MH-S Maintenance Hole (Sanitary)
 - MH-H Maintenance Hole (Hydro)
 - MH-T Traffic Signal Mast
 - MH-U Maintenance Hole (Unidentified)
 - CRW Concrete Retaining Wall
 - SRW Stone Retaining Wall
 - CLF Chain Link Fence
 - BF Board Fence
 - SBF Security Board Fence
 - Deciduous Tree
 - Coniferous Tree
 - UM Underground Services (Unidentified) Per (ADG) Plan March 23, 2015
 - P Underground Services Marker Per (ADG) Plan March 23, 2015
 - G Underground Power Per (ADG) Plan March 23, 2015
 - G Underground Gas Per (ADG) Plan March 23, 2015
 - M-W Monitoring Well
 - GM Gas Meter
 - AC Air Conditioner
 - Δ S Sign
 - HM Hydro Meter

Bearings are grid bearings, derived from the westerly limit of Ersson Avenue, shown to be N22°59'20"W on Plan 4R-27771 and are referred to the Central Meridian of MTN Zone 9 (79°30' West Longitude) NAD-83 (original).

ASSOCIATION OF ONTARIO
LAND SURVEYORS
PLAN SUBMISSION FORM
2136291

THIS PLAN IS NOT VALID UNLESS IT IS AN EMBOSSSED ORIGINAL COPY ISSUED BY THE SURVEYOR. In accordance with Regulation 1026, Section 29 (3).

SITE AREA = 4563.2 m²

ELEVATION NOTES
1. Elevations shown are referred to geoidetic datum.
2. It is the responsibility of the user of this information to verify that the job benchmark has not been altered or disturbed and that its relative elevation and description agrees with the information shown on this drawing.

UTILITY NOTES
1. This drawing cannot be accepted as acknowledging all of the utilities and it will be the responsibility of the user to contact the respective utility authorities for confirmation.
2. Only visible surface utilities were located.
3. A field location of underground plant by the pertinent utility authority is mandatory before any work involving breaking ground, probing, excavating, etc.

© Annis, O'Sullivan, Vollebek Ltd., 2020. THIS PLAN IS PROTECTED BY COPYRIGHT.
ANNIS, O'SULLIVAN, VOLLEBEK LTD.
14 Concourse Gate, Suite 500
Nepean, Ont. K2E 7S6
Phone: (613) 727-0850 / Fax: (613) 727-1079
Email: info@annis.com
Ontario Land Surveyors
Reg. No. 17430-20 Kinesis Ltd. | Pg. 4 of 28 | T.F.

