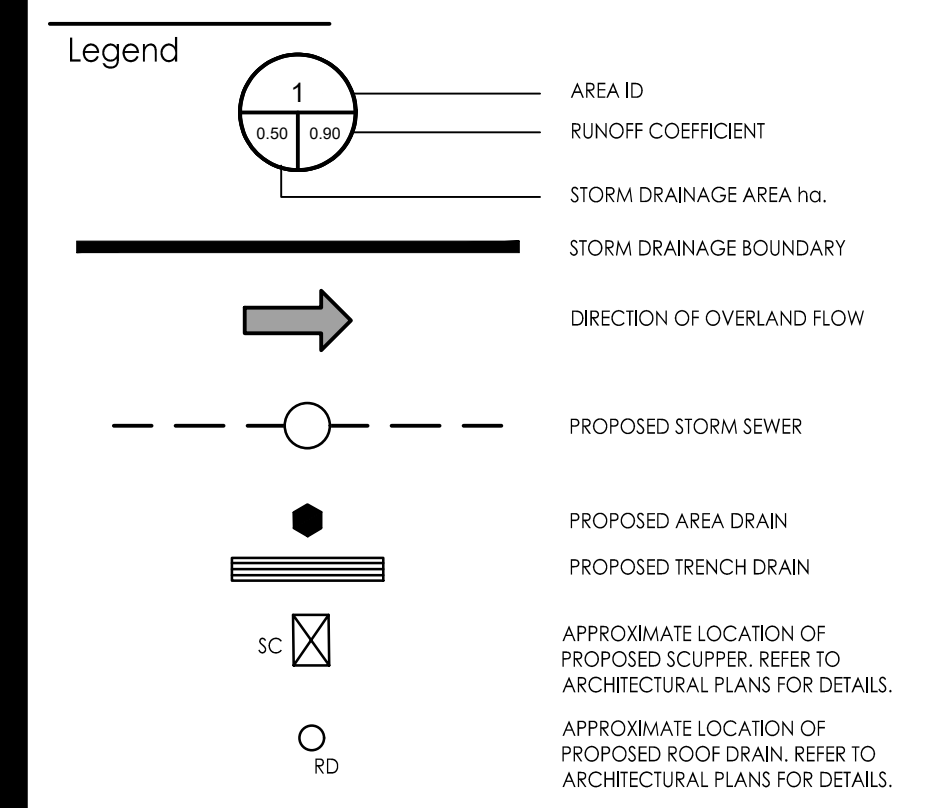




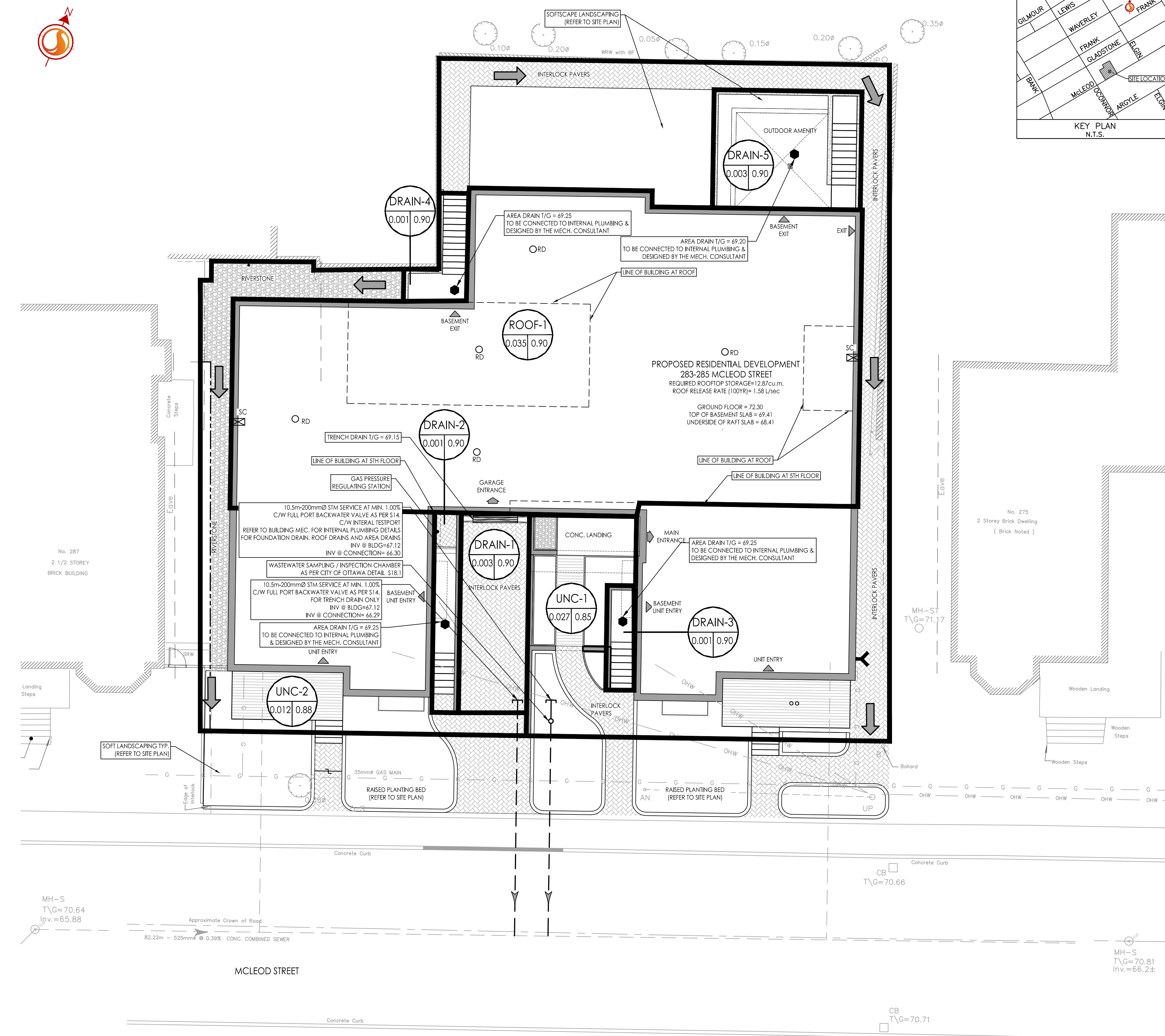
Stantec Consulting Ltd.
 400 - 1331 Clyde Avenue
 Ottawa ON
 Tel. 613.722.4420
 www.stantec.com

Copyright Reserved
 The Contractor shall verify and be responsible for all dimensions. DO NOT scale the drawing - any errors or omissions shall be reported to Stantec without delay.
 The Copyrights to all designs and drawings are the property of Stantec. Reproduction or use for any purpose other than that authorized by Stantec is forbidden.



Notes

- ROOF TO BE EQUIPPED WITH RESTRICTED RELEASE ROOF DRAINS FOR ROOFTOP STORAGE. SCUPPERS TO ALLOW EMERGENCY OVERFLOW OVER 6" (150mm) STORAGE DEPTH.



Revision	By	Appd.	YY.MM.DD
7	AJ	ALG	23.05.16
6	AJ	ALG	23.04.27
5	AJ	ALG	23.01.10
4	AJ	ALG	22.12.23
3	AJ	ALG	22.11.18
2	AJ	ALG	21.08.13
1	AJ	ALG	21.08.06

File Name:	160401560-D8	AJ	ALG	AJ	21.08.01
Revision		Dwn.	Chkd.	Dgn.	YY.MM.DD
Permit-Seal					

Client/Project
 REZY PROPERTIES INC.

CENTERTOWN
 283-285 McLEOD STREET
 OTTAWA, ON, CANADA

Title
 FUNCTIONAL STORM DRAINAGE PLAN

Project No. 160401560
 Drawing No. SD-1
 Scale 1:100
 Sheet 3 of 4
 Revision 7

SCHEDULE OF ROOF RELEASE RATES

BUILDING	DRAIN TYPE	# DRAINS	SETTINGS	2YR Head (mm)	100YR Head (mm)	2YR RELEASE RATE (L/s)	100YR RELEASE RATE (L/s)
ROOF-1	WATTS ACCUTROL	5	100% CLOSED	94.0	149.7	1.58	1.58

V:\1\6401560\160401560.dwg
 2023/05/15 2:21 PM by: CHEN, WWS
 ORIGINAL SHEET - ARCH-D

D01-01-21-001.4 & D02-02-21-10084
 PLAN # 18721