

Ottawa (Head Office)

1800 Bantree Street
Ottawa, Ontario K1B 5L6

☎ 613.745.2444
☎ 613.745.9994

www.cwwcanada.com
1.866.695.0155

Montreal

2700 Sabourin Street
St-Laurent, Quebec H4S 1M2

☎ 514.738.2666
☎ 514.738.9762



INTEGRATED SEWER SOLUTIONS



LAURIER & SWEETLAND Ottawa, Ontario

SEWER CCTV INSPECTION REPORT

Report ID
108465ST1

Sewer Use
Storm

Completion Date
October 13, 2021

Inspected Length
121.80 meters

THE WAY IS CLEAR™

- Watermain Swabbing
- Hydro Vacuum Excavation
- CCTV Inspection of Sewers
- Plumbing & Drain Services
- Structural Rehabilitation of Manholes
- Cured-in-Place-Pipe Lining & Spot Repairs
- Grouting, Test & Seal Joints, Manholes & Services
- Lateral Sewer Inspection & Locates From Main
- Sewer Cleaning, Flushing & Pumping

Table of contents



	Page
1. Index of pipes	2
2. Structural rating	3
3. O&M rating	4
4. Pipe summary and condition details	5
5. Vision Report© Legend	14

1. Index of pipes

4 items

Inspected length : 121.80

Total length : 139.70

Pipe	Start/End	Direction	Road	Date	Inspected	Total	Page
CB MAIN	CB --> MAIN	Direction of flow	Sweetland Avenue	13/10/2021 12:07 PM	1	20	5
CB MAIN	CB --> MAIN	Direction of flow	Sweetland Avenue	13/10/2021 12:17 PM	1	20	7
MHST39435 MHST38965	MHST38965 --> MHST39435	Against flow	Sweetland Avenue	13/10/2021 9:43 AM	66.8	66.8	9
MHST39477 MHST39478	MHST39477 --> MHST39478	Direction of flow	Laurier Avenue E	13/10/2021 11:32 AM	53	52.9	11

2. Structural rating

4 items

2 - Minor to Moderate (1 of 4 items)

Score	Quick	Index	Pipe	Start/End	Direction	Road	Page
68	2E00	2	MHST39477 MHST39478	MHST39477 --> MHST39478	Direction of flow	Laurier Avenue E	11

0 - No Defects (3 of 4 items)

Score	Quick	Index	Pipe	Start/End	Direction	Road	Page
0	0000	0	CB MAIN	CB --> MAIN	Direction of flow	Sweetland Avenue	5
0	0000	0	CB MAIN	CB --> MAIN	Direction of flow	Sweetland Avenue	7
0	0000	0	MHST39435 MHST38965	MHST38965 --> MHST39435	Against flow	Sweetland Avenue	9

3. O&M rating

4 items

4 - Significant (1 of 4 items)

Score	Quick	Index	Structural	Pipe	Start/End	Direction	Road	Page
8	4200	4	0	CB MAIN	CB --> MAIN	Direction of flow	Sweetland Avenue	5

2 - Minor to Moderate (1 of 4 items)

Score	Quick	Index	Structural	Pipe	Start/End	Direction	Road	Page
2	2100	2	0	MHST39435 MHST38965	MHST38965 --> MHST39435	Against flow	Sweetland Avenue	9

0 - No Defects (2 of 4 items)

Score	Quick	Index	Structural	Pipe	Start/End	Direction	Road	Page
0	0000	0	0	CB MAIN	CB --> MAIN	Direction of flow	Sweetland Avenue	7
0	0000	0	2	MHST39477 MHST39478	MHST39477 --> MHST39478	Direction of flow	Laurier Avenue E	11

4. Pipe summary and condition details

Pipe identification

Pipe: CB MAIN	Direction of inspection: CB --> MAIN
Direction of flow: CB --> MAIN	Direction: Direction of flow

Pipe location

Road: Sweetland Avenue	<u>UPSTREAM</u>	<u>DOWNSTREAM</u>
Crossroad:	Easting (X):	Easting (X):
Drainage Area:	Northing (Y):	Northing (Y):
City: Ottawa	Elevation (Z):	Elevation (Z):
Location: Light Highway	GPS Accuracy:	
Owner: J.L. Richards	Coordinate System:	
Road segment:	Vertical Datum:	

Pipe characteristics

Sewer Use: Stormwater	Inspected length: 1
Height: 150	Total length: 20
Width:	Rim/Inv.:
Shape: Circular	Grade/Inv.:
Material: Polyvinyl Chloride	Rim/Grade:
Lining:	Rim/Inv.:
Joint length:	Grade/Inv.:
Year laid:	Rim/Grade:
Year renewed:	Sewer category:

Additional details

Date: 13/10/2021 12:07 PM	Location details:
Project Number: Laurier Ave E	Surveyed by: Jonathan Larocque
Customer: J.L. Richards-108465	Certificate #: U06180703002189
PO number:	Pre-Cleaning: Jetting
Work order: 108465	Date cleaned:
Purpose:	Unit of measurement: Metric
Weather: Dry	Media label: 108465ST1
Flow control: Not Controlled	Sheet #:

Structural rating

O&M rating

Overall rating

Peak: 0	Peak: 4	Peak: 4
Quick rating: 0000	Quick rating: 4200	Quick rating: 4200
Score: 0	Score: 8	Score: 8
Index: 0	Index: 4	Index: 4

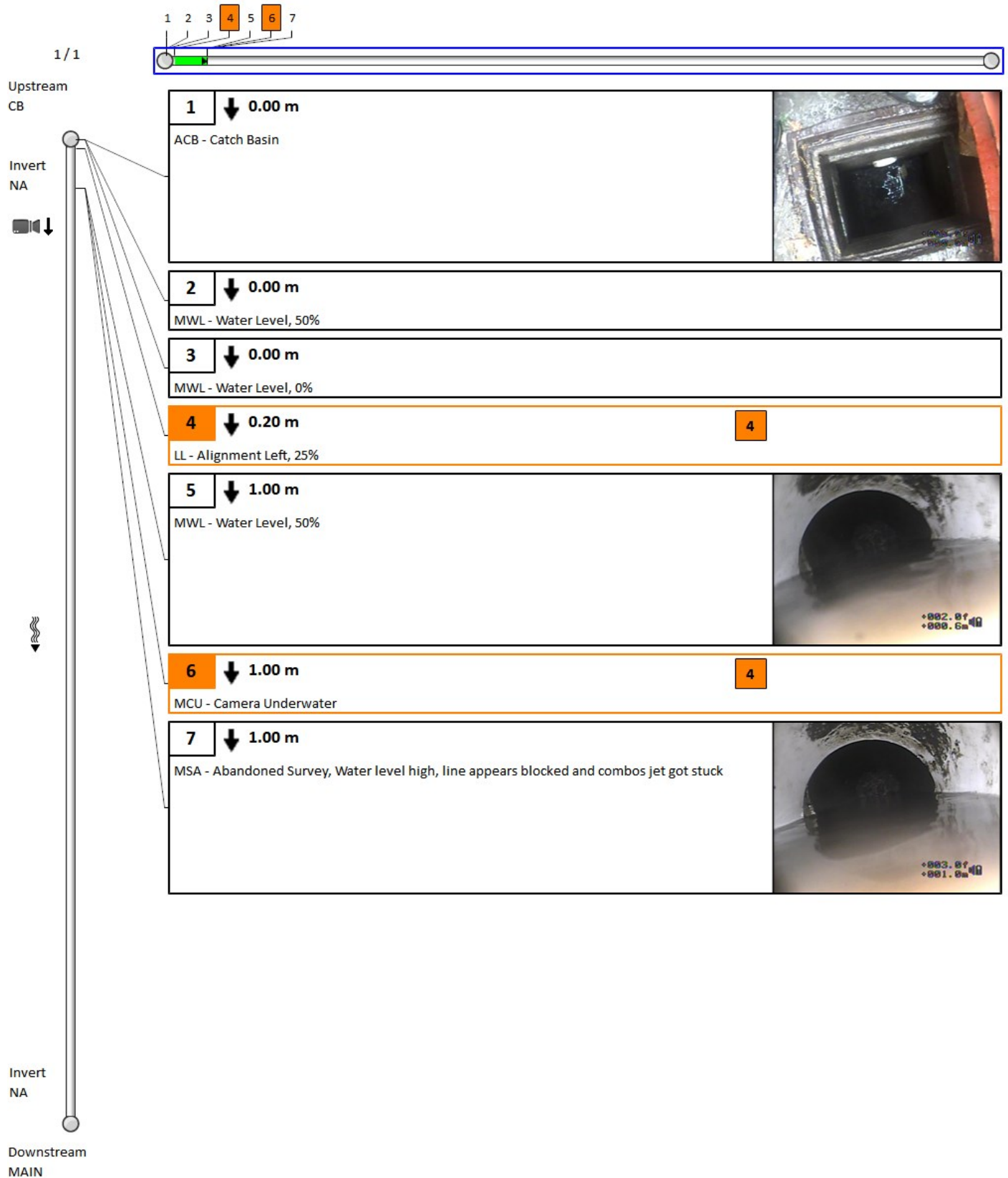
Additional information

--

Other information

Report ID: 108465ST1	Information 6:
Information 2:	Information 7:
Information 3:	Information 8:
Information 4:	Information 9:
Information 5:	Information 10:

4. Pipe summary and condition details



4. Pipe summary and condition details

Pipe identification

Pipe: CB MAIN	Direction of inspection: CB --> MAIN
Direction of flow: CB --> MAIN	Direction: Direction of flow

Pipe location

Road: Sweetland Avenue	<u>UPSTREAM</u>	<u>DOWNSTREAM</u>
Crossroad:	Easting (X):	Easting (X):
Drainage Area:	Northing (Y):	Northing (Y):
City: Ottawa	Elevation (Z):	Elevation (Z):
Location: Light Highway	GPS Accuracy:	
Owner: J.L. Richards	Corrdinate System:	
Road segment:	Vertical Datum:	

Pipe characteristics

Sewer Use: Stormwater	Inspected length: 1
Height: 150	Total length: 20
Width:	Rim/Inv.:
Shape: Circular	Grade/Inv.:
Material: Polyvinyl Chloride	Rim/Grade:
Lining:	Rim/Inv.:
Joint length:	Grade/Inv.:
Year laid:	Rim/Grade:
Year renewed:	Sewer category:

Additional details

Date: 13/10/2021 12:17 PM	Location details:
Project Number: Laurier Ave E	Surveyed by: Jonathan Larocque
Customer: J.L. Richards-108465	Certificate #: U06180703002189
PO number:	Pre-Cleaning: Jetting
Work order: 108465	Date cleaned:
Purpose:	Unit of measurement: Metric
Weather: Light Rain	Media label: 108465ST1
Flow control: Not Controlled	Sheet #:

Structural rating

O&M rating

Overall rating

Peak: 0	Peak: 0	Peak: 0
Quick rating: 0000	Quick rating: 0000	Quick rating: 0000
Score: 0	Score: 0	Score: 0
Index: 0	Index: 0	Index: 0

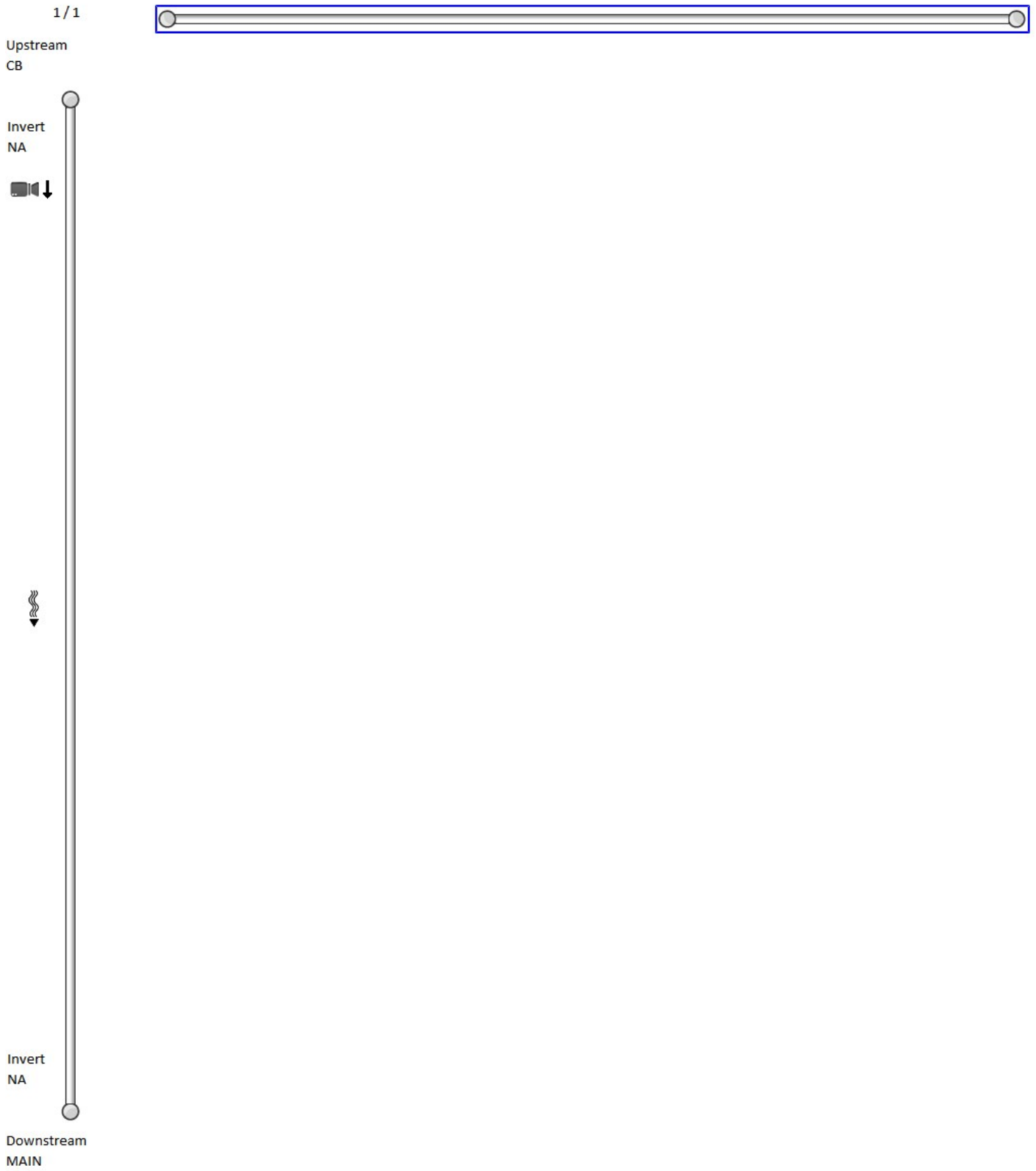
Additional information

Pipe potentially broken, combo pulled out big rocks out of line

Other information

Report ID: 108465ST1	Information 6:
Information 2:	Information 7:
Information 3:	Information 8:
Information 4:	Information 9:
Information 5:	Information 10:

4. Pipe summary and condition details



4. Pipe summary and condition details

Pipe identification

Pipe: MHST39435 MHST38965	Direction of inspection: MHST38965 --> MHST39435
Direction of flow: MHST39435 --> MHST38965	Direction: Against flow

Pipe location

Road: Sweetland Avenue	<u>UPSTREAM</u>	<u>DOWNSTREAM</u>
Crossroad:	Easting (X):	Easting (X):
Drainage Area:	Northing (Y):	Northing (Y):
City: Ottawa	Elevation (Z):	Elevation (Z):
Location: Light Highway	GPS Accuracy:	
Owner: J.L. Richards	Coordinate System:	
Road segment:	Vertical Datum:	

Pipe characteristics

Sewer Use: Stormwater	Inspected length: 66.8
Height: 375	Total length: 66.8
Width:	Rim/Inv.:
Shape: Circular	Grade/Inv.:
Material: Concrete Segments (unbolted)	Rim/Grade:
Lining:	Rim/Inv.:
Joint length: 2	Grade/Inv.:
Year laid:	Rim/Grade:
Year renewed:	Sewer category:

Additional details

Date: 13/10/2021 9:43 AM	Location details:
Project Number: Laurier Ave E	Surveyed by: Jonathan Larocque
Customer: J.L. Richards-108465	Certificate #: U06180703002189
PO number:	Pre-Cleaning: Jetting
Work order: 108465	Date cleaned:
Purpose:	Unit of measurement: Metric
Weather: Dry	Media label: 108465ST1
Flow control: Not Controlled	Sheet #:

Structural rating

O&M rating

Overall rating

Peak: 0	Peak: 2	Peak: 2
Quick rating: 0000	Quick rating: 2100	Quick rating: 2100
Score: 0	Score: 2	Score: 2
Index: 0	Index: 2	Index: 2

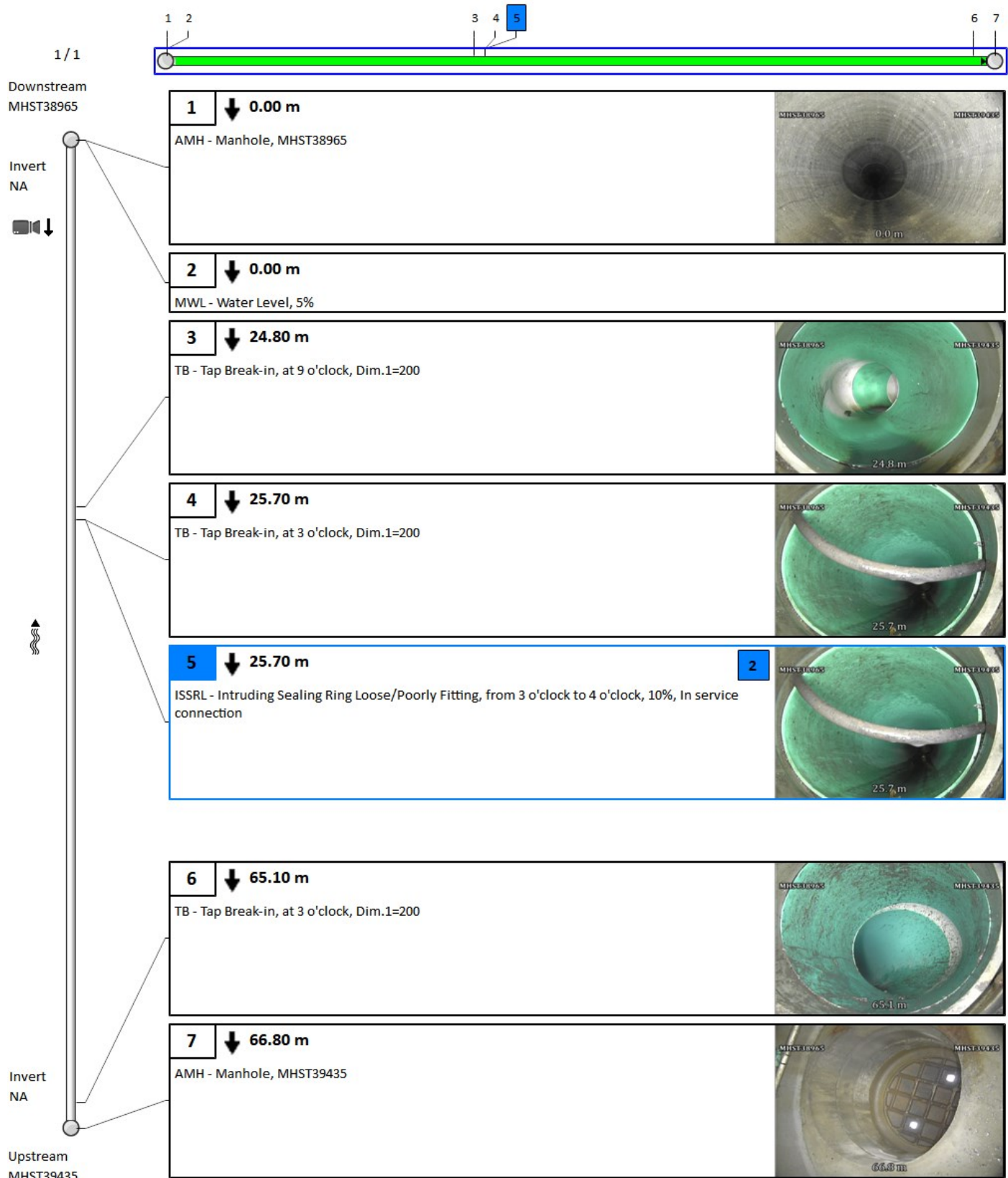
Additional information

--

Other information

Report ID: 108465ST1	Information 6:
Information 2:	Information 7:
Information 3:	Information 8:
Information 4:	Information 9:
Information 5:	Information 10:

4. Pipe summary and condition details



4. Pipe summary and condition details

Pipe identification

Pipe: MHST39477 MHST39478	Direction of inspection: MHST39477 --> MHST39478
Direction of flow: MHST39477 --> MHST39478	Direction: Direction of flow

Pipe location

Road: Laurier Avenue E	<u>UPSTREAM</u>	<u>DOWNSTREAM</u>
Crossroad:	Easting (X):	Easting (X):
Drainage Area:	Northing (Y):	Northing (Y):
City: Ottawa	Elevation (Z):	Elevation (Z):
Location: Light Highway	GPS Accuracy:	
Owner: J.L. Richards	Coordinate System:	
Road segment:	Vertical Datum:	

Pipe characteristics

Sewer Use: Stormwater	Inspected length: 53
Height: 1050	Total length: 52.9
Width:	Rim/Inv.:
Shape: Circular	Grade/Inv.:
Material: Reinforced Concrete Pipe	Rim/Grade:
Lining:	Rim/Inv.:
Joint length: 2	Grade/Inv.:
Year laid:	Rim/Grade:
Year renewed:	Sewer category:

Additional details

Date: 13/10/2021 11:32 AM	Location details:
Project Number: Laurier Ave E	Surveyed by: Jonathan Larocque
Customer: J.L. Richards-108465	Certificate #: U06180703002189
PO number:	Pre-Cleaning: Jetting
Work order: 108465	Date cleaned:
Purpose:	Unit of measurement: Metric
Weather: Dry	Media label: 108465ST1
Flow control: Not Controlled	Sheet #:

Structural rating

O&M rating

Overall rating

Peak: 2	Peak: 0	Peak: 2
Quick rating: 2E00	Quick rating: 0000	Quick rating: 2E00
Score: 68	Score: 0	Score: 68
Index: 2	Index: 0	Index: 2

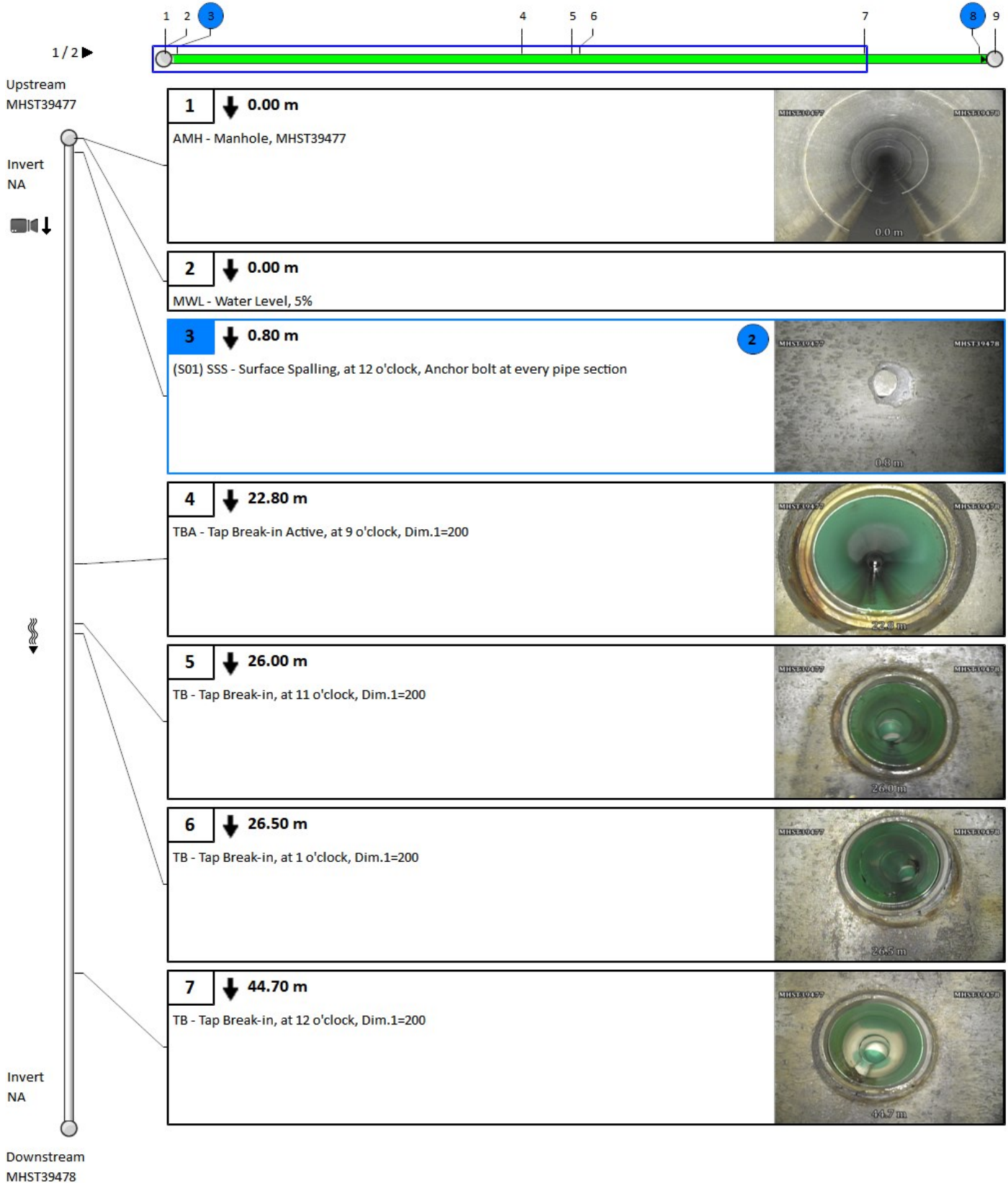
Additional information

--

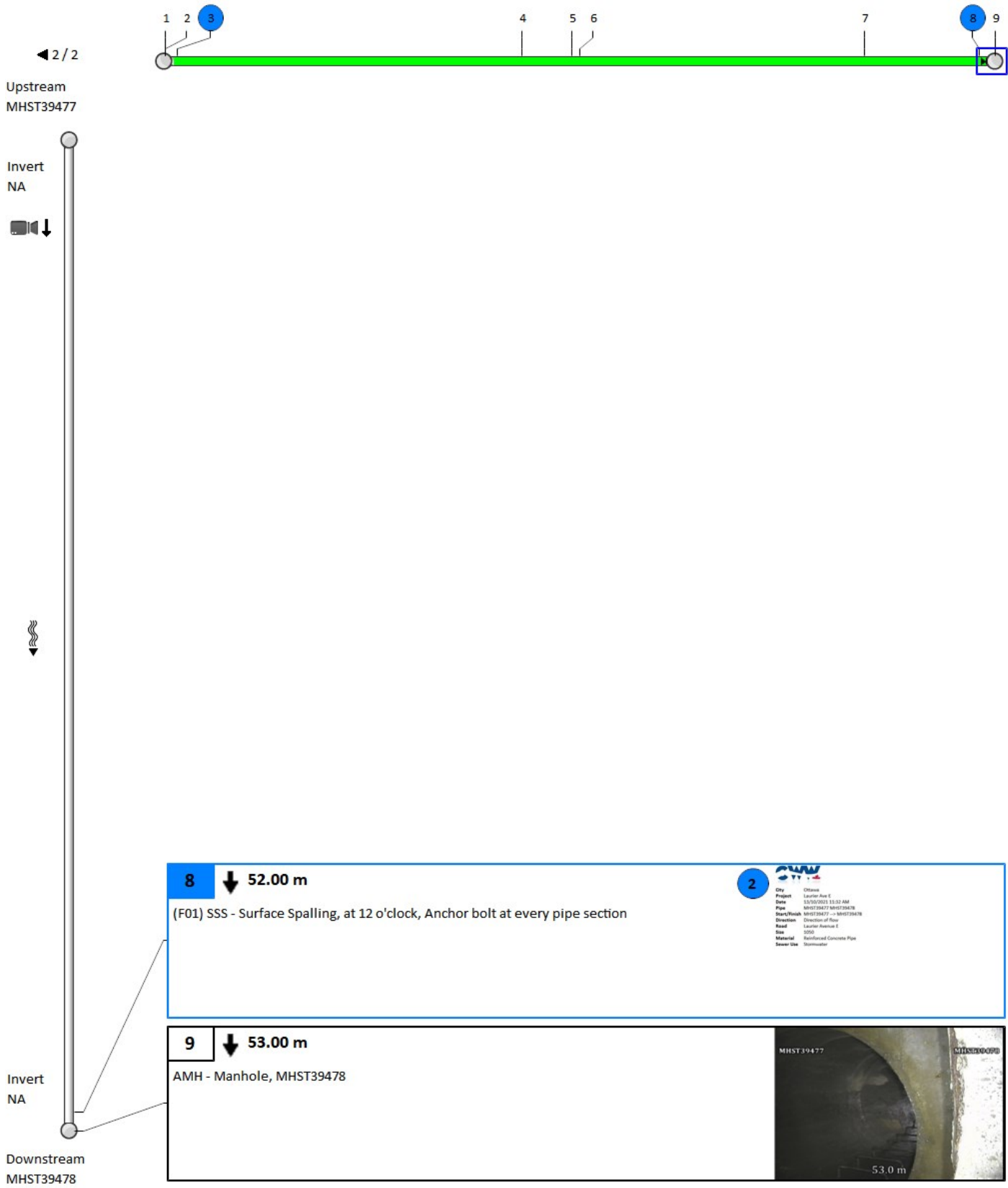
Other information

Report ID: 108465ST1	Information 6:
Information 2:	Information 7:
Information 3:	Information 8:
Information 4:	Information 9:
Information 5:	Information 10:

4. Pipe summary and condition details



4. Pipe summary and condition details



8 ↓ 52.00 m

(F01) SSS - Surface Spalling, at 12 o'clock, Anchor bolt at every pipe section

2

City	Ottawa
Project	Leaside Ave E
Date	12/05/2012 11:52 AM
Pipe	MHST39477 MHST39478
Start/Finish	MHST39477 → MHST39478
Direction	Direction of flow
Road	Leaside Avenue E
Size	3000
Material	Reinforced Concrete Pipe
Sewer Use	Stormwater

9 ↓ 53.00 m

AMH - Manhole, MHST39478

MHST39477 MHST39478






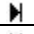
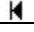







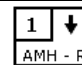
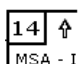
53.0 m

etland ave



5688908.928 Meters

Vision Report © Legend

	The numbers sequentially indicate each observation that was picked up throughout the inspection period. This will allow you to sift through the pages and view the accompanying description and photos in each section. Note that when a pipe section contains too many observations, Vision© Report must hide secondary observations in order to optimize the display.*
60	A number with neither a square nor circle indicates a general observation.
	A circled number indicates a structural anomaly. The color of the circle indicates the severity of the anomaly on a scale of 1 to 5, 5 being the most severe: green=1, blue=2, magenta=3, orange=4 and red=5.
	A number in a square indicates an operation and maintenance anomaly. The color of the square indicates the severity of the anomaly on a scale of 1 to 5, 5 being the most severe: green=1, blue=2, magenta=3, orange=4 and red=5.
◀ 3 / 31 ▶	Indicates the current page number of the inspection report.
	The blue square indicates a section of the pipe; this section is covered in detail on the current page of the report.
	The green line indicates the inspected part of the pipe. The remaining white line indicates the uninspected part of the pipe.
	Indicates the hold points on the camera during an inspection.
	Indicates the hold points on the camera during the reverse inspection.
	Indicates that a reverse inspection was carried out, however the camera did not reach the initial inspection hold point. (the hold point of the initial inspection)
	Indicates that a reverse inspection was carried out and that it has joined (has arrived at) the initial inspection hold point.
401-059B 	Identifies the start manhole number. Note that this manhole is not necessarily the upstream manhole of the pipe.
401-631 	Identifies the end manhole number. Note that this manhole is not necessarily the downstream manhole of the pipe.
	A downward arrow indicates that the inspection was carried out in the direction of the current, whereas an upward arrow indicates an inspection against the current. Note that the manhole located on the upper left of the page is always the start manhole, but not necessarily the upstream manhole of the pipe.
	This camera followed by a downward arrow is located on the upper left of the vertical pipe; it indicates that an inspection was done from this manhole.
	When the second camera appears on the bottom left page it means that a reverse inspection was carried out. Information about the reverse inspection is included in the report, thereby combining both inspections.
Invert 3.40	The measurement shown under the word <Invert> indicates the measurements between the frame and the pipe captured during the inspection. This measurement is available at the top left for the start manhole and the bottom left for the end manhole. If the invert was not measured during the inspection, an <NA> mark will be displayed.
	The downward bold arrow to the right of the observation number indicates that this observation was captured during the initial inspection.
	The blank arrow pointing upwards and located to the right of the observation number indicates that this observation was taken during the reverse inspection period, thereby confirming that this report combined both inspections.
18.40 m	Located to the right of the observation number is a number identifying the observation distance in relation to the start of the pipe.
SRV - Armature visib	A full description of the observation code according to the protocol used.

*Any hidden observations are readily accessible from the database as well as in other CTSpec report templates.

** CTSpec inc. reserves the right to modify, eliminate or add to the product features described in this pamphlet without notice.

© 2012 CTSpec inc. All rights reserved.