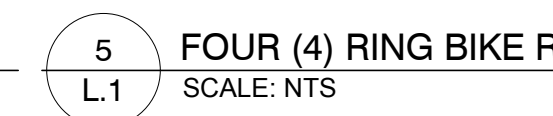
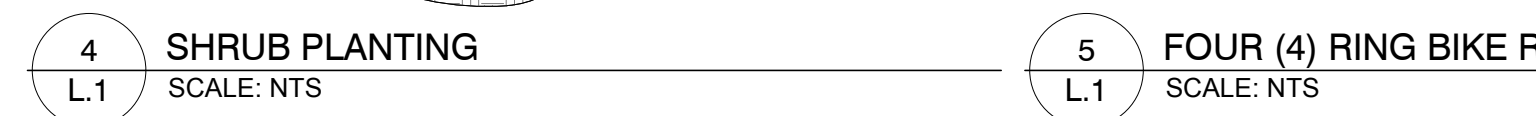
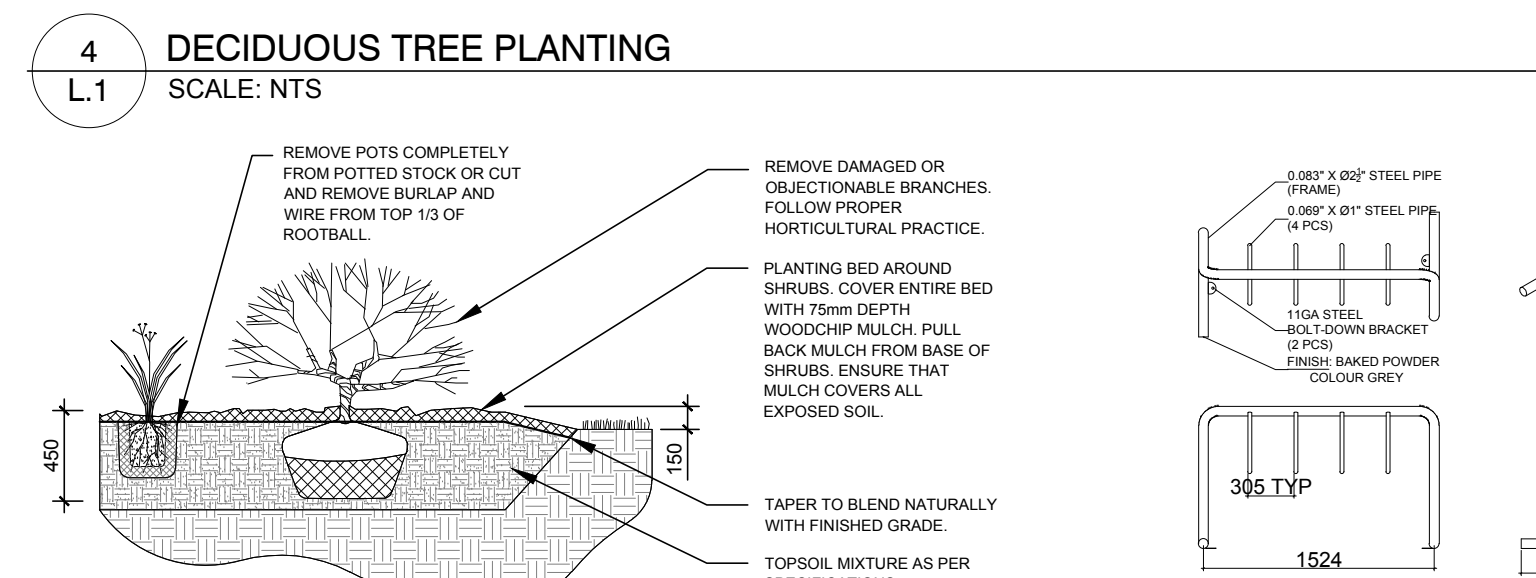
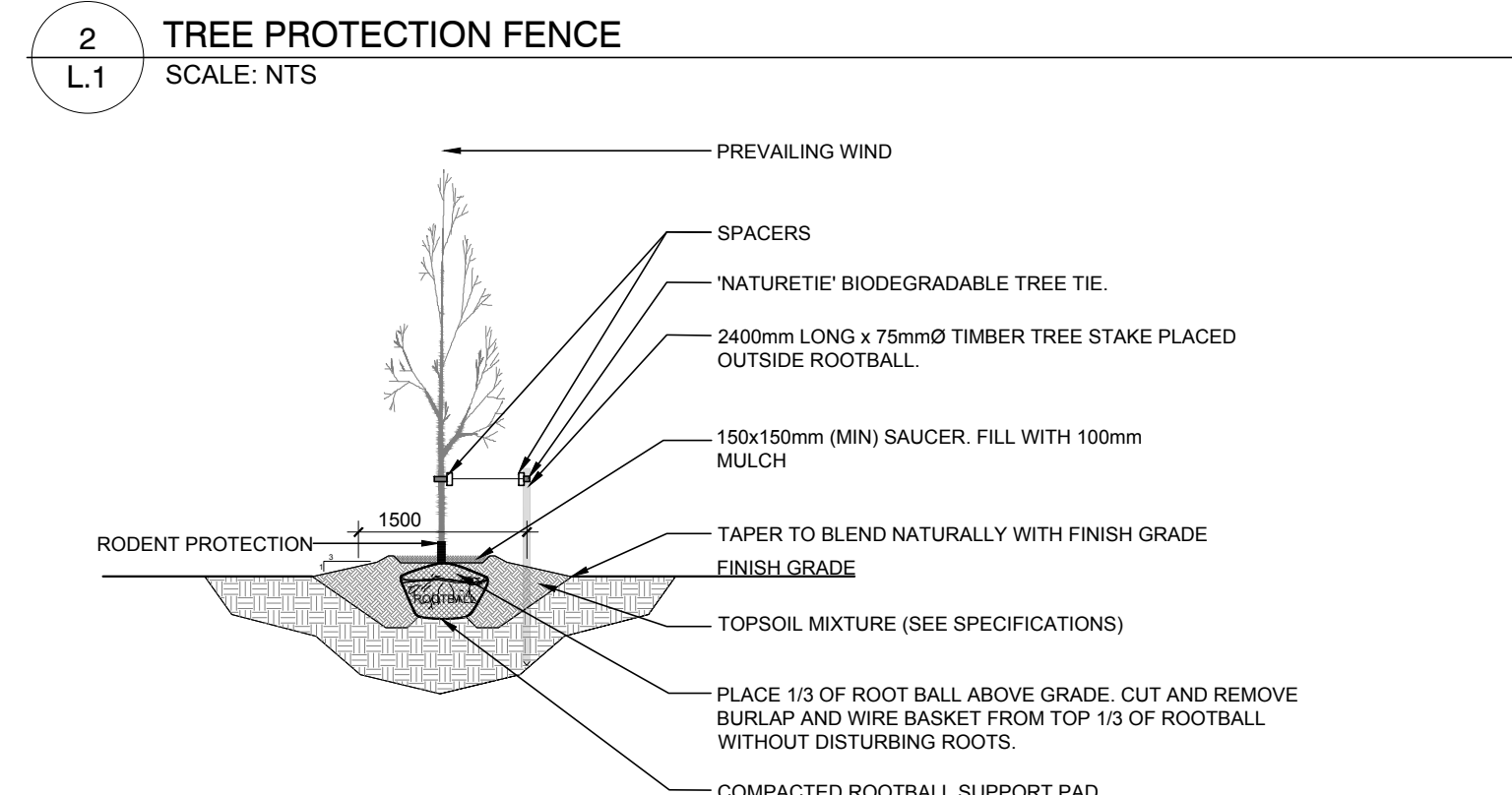
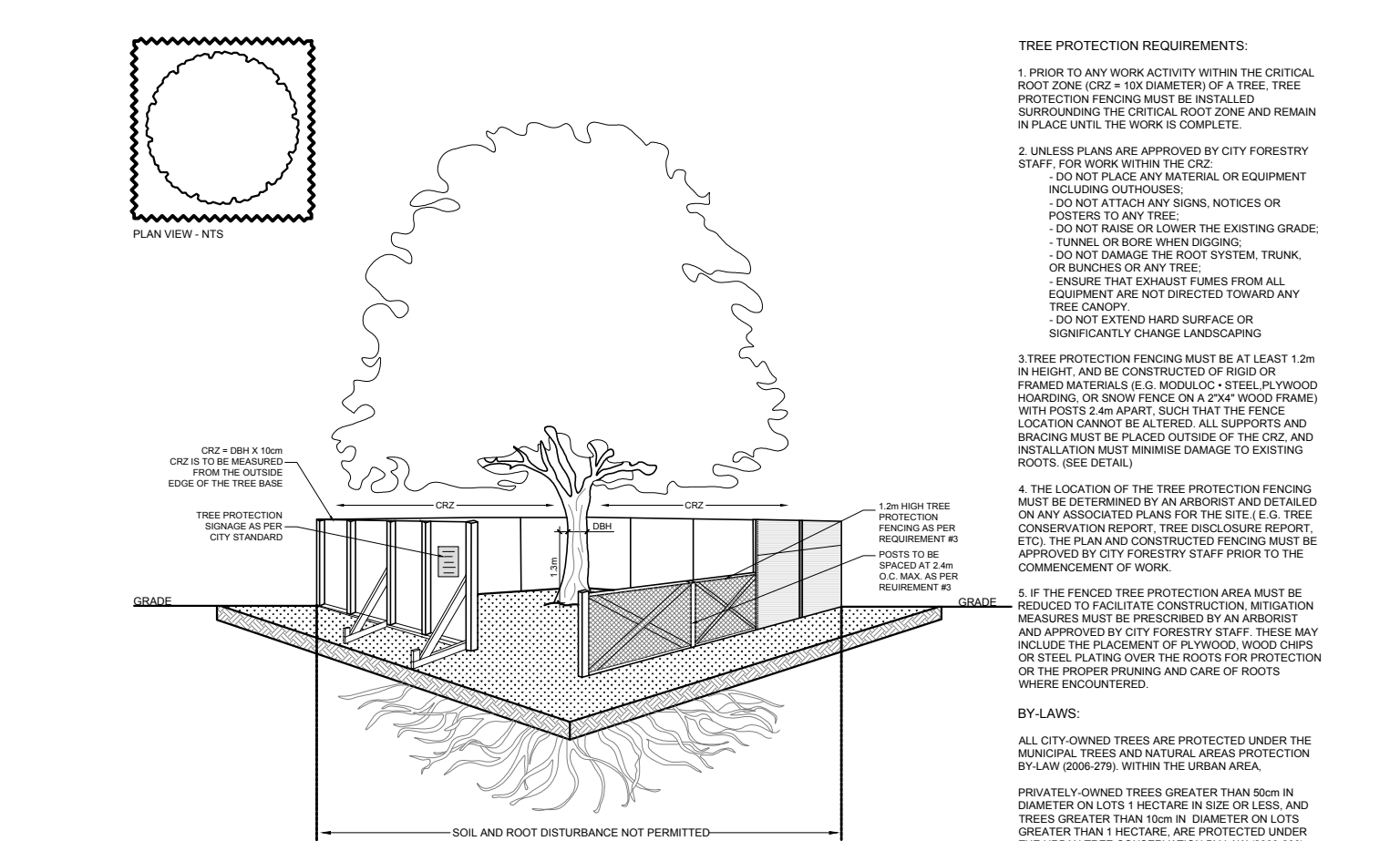


| EXISTING TREE LIST | | | | | | |
|--------------------|-----|---------------------------|---------------------|---------------|-----------|---------------|
| KEY | QTY | BOTANICAL NAME | COMMON NAME | SIZE | CONDITION | REMARKS |
| TREES | | | | | | |
| AP | 2 | <i>Acer platanoides</i> | Norway Maple | 170-600mm dbh | Poor-good | To remain |
| QR | 1 | <i>Quercus rubra</i> | Red Oak | 420mm dbh | Good | To remain |
| TO | # | <i>Thuja occidentalis</i> | Eastern White Cedar | 100-300mm dbh | Dead-good | To remain |
| UP1 | 2 | <i>Ulmus pumila</i> | Siberian Elm | 580-590mm dbh | Good | To be removed |
| UP2 | 1 | <i>Ulmus pumila</i> | Siberian Elm | 300mm dbh | Good | To remain |

| PROPOSED PLANT LIST | | | | | | |
|------------------------|-----|--|----------------------|--------------|-----------|-------------------|
| KEY | QTY | BOTANICAL NAME | COMMON NAME | SIZE | CONDITION | REMARKS |
| DECIDUOUS TREES | | | | | | |
| CO | 1 | <i>Quercus robur 'Fastigiata'</i> | Columnar English Oak | 60mm cal. | B&B | Single Leader |
| SB | 1 | <i>Amelanchier canadensis</i> | Serviceberry | 60mm cal. | B&B | Single Leader |
| SHRUBS | | | | | | |
| AH | 11 | <i>Hydrangea arborescens 'Annabelle'</i> | Annabelle Hydrangea | 1 gallon pot | Potted | Space 1000mm o.c. |

- GENERAL NOTES:**
- It is the responsibility of the appropriate contractor or official to report any errors, omissions or discrepancies on this plan with actual site conditions to the Landscape Architect before proceeding with construction.
 - The contractor is to notify all utility companies and authorities prior to any excavation and ascertain locations of underground services.
 - The contractor is to reinstatement all areas and items damaged as a result of construction activity.
 - The contractor is to comply with all pertinent codes and by-laws.
 - The contractor is to maintain a positive surface run-off throughout the entire construction period.
 - The Landscape Architect is not responsible for subsurface conditions.
 - The contractor is to identify all existing trees to remain on site with the Landscape Architect prior to construction.
 - The contractor is to stake the proposed location of all plant material in conjunction with the Landscape Architect prior to excavation.
 - Minimum distances for selected deciduous trees are as follows:
 - Building Foundations 7.5m
 - Sidewalks 1.5m
 - Public Streets 2.5m
 - Underground Infrastructure 2.0m
 - All trees within 1m of underground utility trenches are to be excavated by hand.
 - Remove all protective wrapping from tree trunks after installation.
 - Staking of trees shall only be performed if necessary.
 - Ensure that mulch is pulled back a min. distance of 75mm from base of tree trunk.



1 TREE CONSERVATION REPORT & LANDSCAPE PLAN
SCALE: 1:100

CLIENT: SMART LIVING PROPERTIES

CONSULTANTS: J.L. Richards & Associates Limited ENGINEERS • ARCHITECTS • PLANNERS

ARCHITECTS: OTTAWA CARLETON CONSTRUCTION

LEGEND:

- EXISTING TREE TO REMAIN
- GROUP OF EXISTING TREES TO REMAIN
- EXISTING TREE TO BE REMOVED
- PROPOSED DECIDUOUS TREE
- PROPOSED SHRUBS
- PROPOSED SOD
- PROPOSED RIVERSTONE MULCH
- PROPOSED CONCRETE
- PROPOSED PRECAST CONCRETE PAVERS
- PROPOSED TREE PROTECTION FENCE

| | | | | |
|-----|------------------------------|------------|----|----|
| 1 | ISSUED FOR SITE PLAN CONTROL | 07/29/2021 | ML | JL |
| No. | Issue | Date | DR | CK |

JAMES B. LENNOX & ASSOCIATES INC. LANDSCAPE ARCHITECTS
3332 CARLING AVE. OTTAWA, ONTARIO K2H 5A8
Tel. (613) 722-5168 Fax. (1866) 343-3942

PROJECT: NEW ADDITION TO EXISTING 6 STOREY BUILDING
280 LAURIER AVENUE EAST, OTTAWA ON

DRAWING: TREE CONSERVATION REPORT & LANDSCAPE PLAN

STAMP: ASSOCIATION OF LANDSCAPE ARCHITECTS OF CANADA MEMBER

SCALE: AS SHOWN
START DATE: JULY 2021
PROJECT NO.: 21SMT2162
DRAWING NO.: L.1
PLOT SIZE ARCH-D