

LOT 5 AND PART OF LOT 6 (SOUTH LAURIER AVENUE) REGISTERED PLAN 14349 CITY OF OTTAWA

Surveyed by Annis, O'Sullivan, Vollebek Ltd.

Scale 1:150

Metric DISTANCES SHOWN ON THIS PLAN ARE IN METRES AND CAN BE CONVERTED TO FEET BY DIVIDING BY 0.3048

Surveyor's Certificate

- I CERTIFY THAT: 1. This survey and plan are correct and in accordance with the Surveys Act and the Surveyors Act and the regulations made under them. 2. The survey was completed on the 5th day of February, 2021.

Feb 12/21 Date T. Hartwick Ontario Land Surveyor

SITE AREA = 895.8 m²

Bearings are astronomic, derived from the easterly limit of Sweetland Avenue, shown as N30°38'40"W on Plan SR-6213.

ELEVATION NOTES

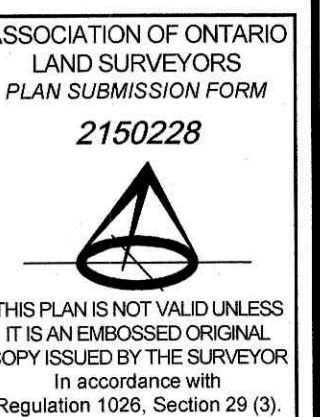
- 1. Elevations shown are geodetic and are referred to the CGVD28 geodetic datum. 2. It is the responsibility of the user of this information to verify that the job benchmark has not been altered or disturbed and that its relative elevation and description agrees with the information shown on this drawing.

UTILITY NOTES

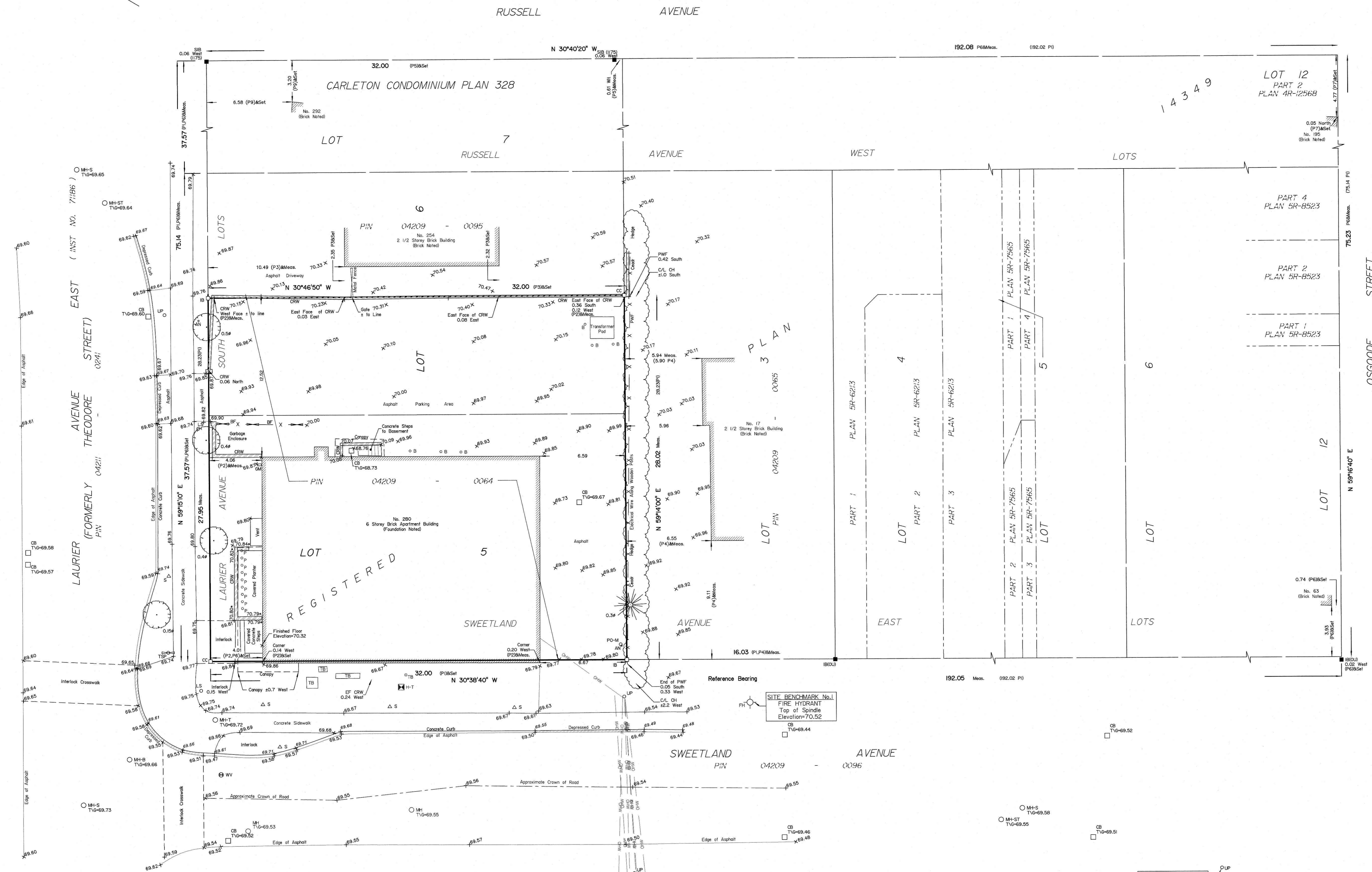
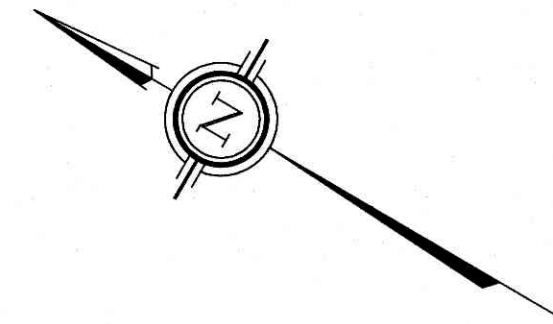
- 1. This drawing cannot be accepted as acknowledging all of the utilities and it will be the responsibility of the user to contact the respective utility authorities for confirmation. 2. Only visible surface utilities were located. 3. A field location of underground plan by the pertinent utility authority is mandatory before any work involving breaking ground, probing, excavating etc.

Notes & Legend

- Denotes Survey Monument Planted, Survey Monument Found, Standard Iron Bar, Short Standard Iron Bar, Iron Bar, Cut Cross, Witness, Measured, Annis, O'Sullivan, Vollebek Ltd., Registered Plan 14349, (647) Plan dated March 20, 1969 (Ref. Lot 5 & W1/2 Lot 6), (647) Plan dated January 7, 1970 (Ref. E1/2 Lot 6), (647) Plan dated August 12, 1982 (Ref. Lot 3), Carleton Condominium Plan 328, (AOG) Plan dated January 14, 2015, (647) Notes dated August 1980, (1319) Plan dated June 1981, (647) Notes dated November 10, 1978, Deciduous Tree, Coniferous Tree, Fire Hydrant, Water Valve, Maintenance Hole (Storm Sewer), Maintenance Hole (Sanitary), Maintenance Hole (Bell Telephone), Maintenance Hole (Traffic), Maintenance Hole (Unidentified), Valve Chamber (Watermain), Overhead Wires, Catch Basin, Unidentified Terminal Box, Traffic Signal Post, Gas Meter, Bollard, Pillar, Location of Elevations, Location of Wall Elevations, Top of Concrete Curb Elevation, Centreline, Property Line, Gate, Concrete Retaining Wall, Sign, Cedar Hedge, Board Fence, Gate, Metal Pole, Utility Pole, Anchor, Light Standard, Diameter



THIS PLAN IS NOT VALID UNLESS IT IS AN EMBOSSED ORIGINAL COPY ISSUED BY THE SURVEYOR In accordance with Regulation 1026, Section 23 (3).



SITE BENCHMARK No. 1 FIRE HYDRANT Top of Spindle Elevation=70.52

SITE BENCHMARK No. 2 Nail in Utility Pole Elevation=70.09