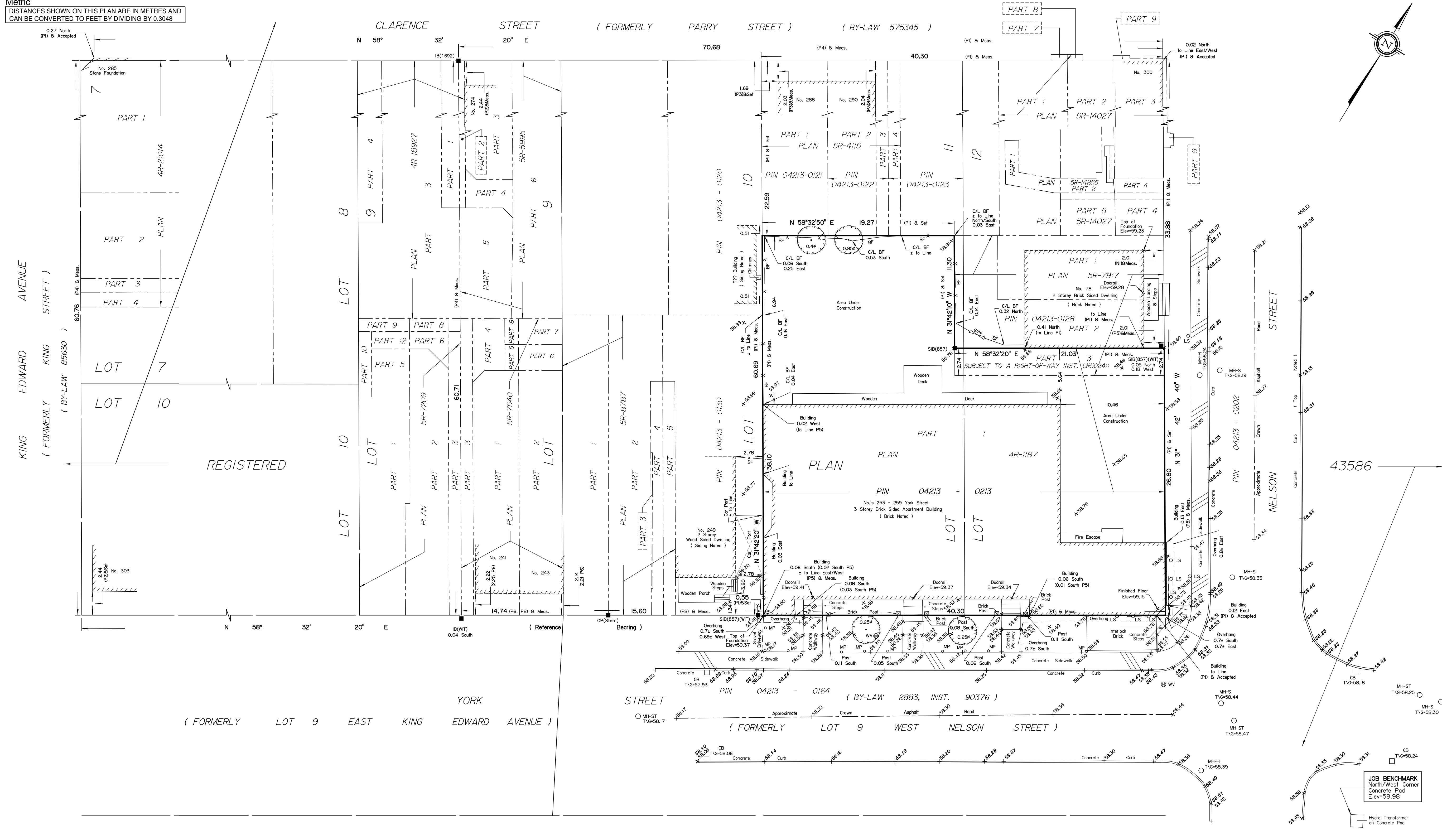


Metric  
DISTANCES SHOWN ON THIS PLAN ARE IN METRES AND  
CAN BE CONVERTED TO FEET BY DIVIDING BY 0.3048



**DRAFT SURVEYOR'S REAL PROPERTY REPORT**

**PART 1** Plan of  
**PART OF LOTS 11 And 12**  
**( South Clarence Street )**  
**REGISTERED PLAN 43586**  
**CITY OF OTTAWA**

Surveyed by Annis, O'Sullivan, Vollebek Ltd.  
Scale 1 : 200



**Surveyor's Certificate**

- I CERTIFY THAT:
1. This survey and plan are correct and in accordance with the Surveys Act, the Surveyors Act and the Land Titles Act and the regulations made under them.
  2. The survey was completed on the 11th day of April, 2019.

Date \_\_\_\_\_ Katherine M. Sonier  
Ontario Land Surveyor

**PART 2**  
THIS PLAN MUST BE READ IN CONJUNCTION WITH  
SURVEY REPORT DATED: MAY 3, 2019

ANNIS, O'SULLIVAN, VOLLEBEK LTD. grants to  
Smart Living Properties ("The Client"), their solicitors,  
mortgages, and other related parties, permission to use original, signed, sealed  
copies of the Surveyor's Real Property Report in transactions involving The Client.

**Notes & Legend**

Symbol	Denotes	Survey Monument Planted
■	Survey Monument Found	
SIB	Standard Iron Bar	
IB	Short Standard Iron Bar	
CP	Iron Bar	
(WIT)	Witness	
(AOG)	Measured	
Meas.	Annis, O'Sullivan, Vollebek Ltd.	
(P1)	Plan 4R-1187	
(P2)	Plan 5R-3373	
(P3)	Plan 5R-4115	
(P4)	Plan 5R-5995	
(P5)	(857) Plan, December 4, 1974	
(P6)	Plan 5R-4250	
(P7)	(OTT) Plan, August 1, 1986	
(P8)	Plan 5R-8787	
(N1)	(857) Field Notes, December 4, 1974	
○ MH-ST	Maintenance Hole (Storm Sewer)	
○ MH-S	Maintenance Hole (Sanitary)	
○ MH-H	Maintenance Hole (Hydro)	
□ CB	Catch Basin	
○ WV	Water Valve	
○ LS	Light Standard	
○	Deciduous Tree	
○ MP	Metal Post	
BF	Board Fence	
Ø	Diameter	
+ 65.00	Location of Elevations	
+ 65.00	Top of Concrete Curb Elevation	
T/G	Top of Grate	
C/L	Centreline	

For bearing comparisons, a rotation of 0°44'41" counter-clockwise was applied to bearings on plan P1.

Bearings are grid and are referred to the Central Meridian of MTM Zone 9 ( 76°30' West Longitude ) NAD-83 (original).

**ELEVATION NOTES**

1. Elevations shown are geodetic and are referred to the CGVD28 geodetic datum.
2. It is the responsibility of the user of this information to verify that the job benchmark has not been altered or disturbed and that it's relative elevation and description agrees with the information shown on this drawing.

**UTILITY NOTES**

1. This drawing cannot be accepted as acknowledging all of the utilities and it will be the responsibility of the user to contact the respective utility authorities for confirmation.
2. Only visible surface utilities were located.
3. A field location of underground plant by the pertinent utility authority is mandatory before any work involving breaking ground, probing, excavating etc.

ASSOCIATION OF ONTARIO LAND SURVEYORS PLAN SUBMISSION FORM

ANNIS, O'SULLIVAN, VOLLEBEK LTD.  
14 Concourse Gate, Suite 500  
Nepean, Ont. K2E 7S6  
Phone: (613) 727-0850 / Fax: (613) 727-1079  
Email: nepean@annisd.com

Ontario Land Surveyors Job No. 18099-18 Smart Living P1 Lts 11 12 RP 43586 SPFR DRAFT

THIS PLAN IS NOT VALID UNLESS IT IS AN EMBOSSED ORIGINAL COPY ISSUED BY THE SURVEYOR in accordance with Regulation 1026, Section 29 (3).

**JOB BENCHMARK**  
North/West Corner  
Concrete Pod  
Elev=58.98

Hydro Transformer on Concrete Pod