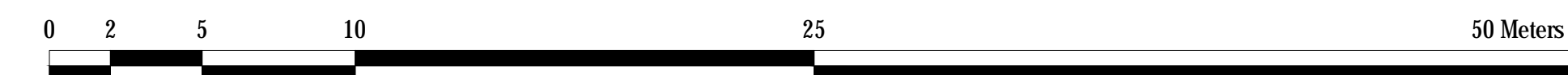




1 EXISTING CONDITIONS

Scale: 1:200



Tree #	Botanical Name	Common Name	DBH (cm)	Ownership	Condition	Comments
1	Acer Freemanii	Freeman Maple	40	City	Moderate/Poor	Asymmetrical canopy. Die back -15% @ canopy. Broken limbs. Pruned @ limbs & leader. Single stem. Bark rot @ trunk. Girdled roots
2	Acer platanoides	Norway Maple	45	City	Poor	Asymmetrical canopy. Die back -60% @ canopy. Pruned limbs @ overhead utilities. Single stem. Bark rot @ limbs & crotches. Leaf torch
3	Picea pungens var. glauca	Colorado Blue Spruce	22	City	Good	Symmetrical canopy. Die back -5% @ branches. Limbed up. Single stem
4	Picea pungens var. glauca	Colorado Blue Spruce	24	City	Good	Symmetrical canopy. Limbed up. Single stem
5	Acer platanoides	Norway Maple	45	City/Private	Moderate	Asymmetrical canopy. Die back -10% @ canopy. Broken limbs. Pruned limbs @ overhead utilities. Single stem. Bark rot @ trunk
6	Acer platanoides	Norway Maple	40	Private	Good	Asymmetrical canopy. Broken limbs. Single stem
7	Ulmus spp	Elm	4 @ 12	Private	Good	Symmetrical canopy. Multi stem: 4
8	Ulmus spp	Elm	30	Private	Good	Asymmetrical canopy. Broken limbs. Single stem
9	Ulmus spp	Elm	55	Private	Good	Asymmetrical canopy. Pruned @ limbs. Single stem. Leaning
10	Acer negundo	Manitoba Maple	20	Private	Good	Asymmetrical canopy. Poor branch angle. Single stem. Leaning
11	Acer negundo	Manitoba Maple	2 @ 20	Private	Good	Asymmetrical canopy. Broken limbs. Multi stem: 2. Included bark
12	Acer negundo	Boxelder Maple	2 @ 24	Private	Good	Asymmetrical canopy. Multi stem: 2. Leaning
13	Acer negundo	Boxelder Maple	22	Private	Good	Asymmetrical canopy. Single stem. Leaning
14	Acer platanoides 'Crimson King'	Crimson King Norway Maple	50	City	Good	Symmetrical canopy. Pruned @ limbs. Single stem. Included bark
15	Acer Saccharum	Sugar Maple	60	City	Good	Asymmetrical canopy. Die back -5% @ canopy. Single stem. Co-dominant leaders: 2 @ -2m above grade. Bark rot @ crotches
16	Pinus nigra	Austrian Pine	27	Private	Good	Asymmetrical canopy. Limbed up. Single stem
17	Gleditsia triacanthos	Honey Locust	40	Private	Good	Asymmetrical canopy. Die back -5% @ canopy. Broken limbs. Poor branch angle. Single stem

NOTES:

- THE EXISTING PROPERTY CONTAINS A MULTI-STORY BUILDING, PARKING GARAGE, AND SURFACE PARKING. THE MAJORITY OF THE EXISTING SITE CONSISTS OF HARD SURFACES. EXISTING VEGETATION IS PRIMARILY COMPRISED OF STREET TREES AROUND THE PERIMETER OF THE SITE AND VOLUNTEER TREE/SHRUB SPECIES ALONG THE NORTH PROPERTY LINE.
 - APPROXIMATELY 2165 m² OF THE SITE IS CURRENTLY OCCUPIED BY AN EXISTING BUILDING AND CONCRETE PARKING STRUCTURE.
 - APPROXIMATELY 2100 m² TO BE COVERED BY THE PROPOSED BUILDING FOOTPRINTS.
 - APPROXIMATELY 940 m² TO BE HARD SURFACES.
- THE PROPOSED DEVELOPMENT REQUIRES THE REMOVAL OF SEVEN (7) TREES.
- A TOTAL OF 40 NEW TREES ARE PROPOSED TO BE PLANTED REFER TO LANDSCAPE PLAN L1.0 FOR TREE SPECIES.
- FOR RETAINED TREES:
 - ERECT A FENCE AT THE CRITICAL ROOT ZONE (CRZ) OF TREES;
 - DO NOT PLACE ANY MATERIAL OR EQUIPMENT WITHIN THE CRZ OF THE TREE;
 - DO NOT ATTACH ANY SIGNS, NOTICES OR POSTERS TO ANY TREE;
 - DO NOT RAISE OR LOWER THE EXISTING GRADE WITHIN THE CRZ WITHOUT APPROVAL;
 - TUNNEL OR BORE WHEN DIGGING WITHIN THE CRZ OF A TREE;
 - DO NOT DAMAGE THE ROOT SYSTEM, TRUNK OR BRANCHES OF ANY TREE;
 - ENSURE THAT EXHAUST FUMES FROM ALL EQUIPMENT ARE NOT DIRECTED TOWARDS ANY TREE'S CANOPY.

LEGEND - EXISTING CONDITIONS:

- SITE PROPERTY LINE
- TREE PROTECTION
- ① TREE IDENTIFICATION NUMBER
- CRITICAL ROOT ZONE (CRZ)
- EXISTING DECIDUOUS TREE

No.	Revision	Date
1	ISSUED FOR REVIEW	27 AUG 2021

North:

Stamp:

CSW Landscape Architecture
 Urban Design
 Site Planning
 Recreation and Park Planning
 Project Management

319 McRae Avenue, Suite 502, Ottawa, Ontario, K1Z 0B9
 Tel: (613) 729-4536

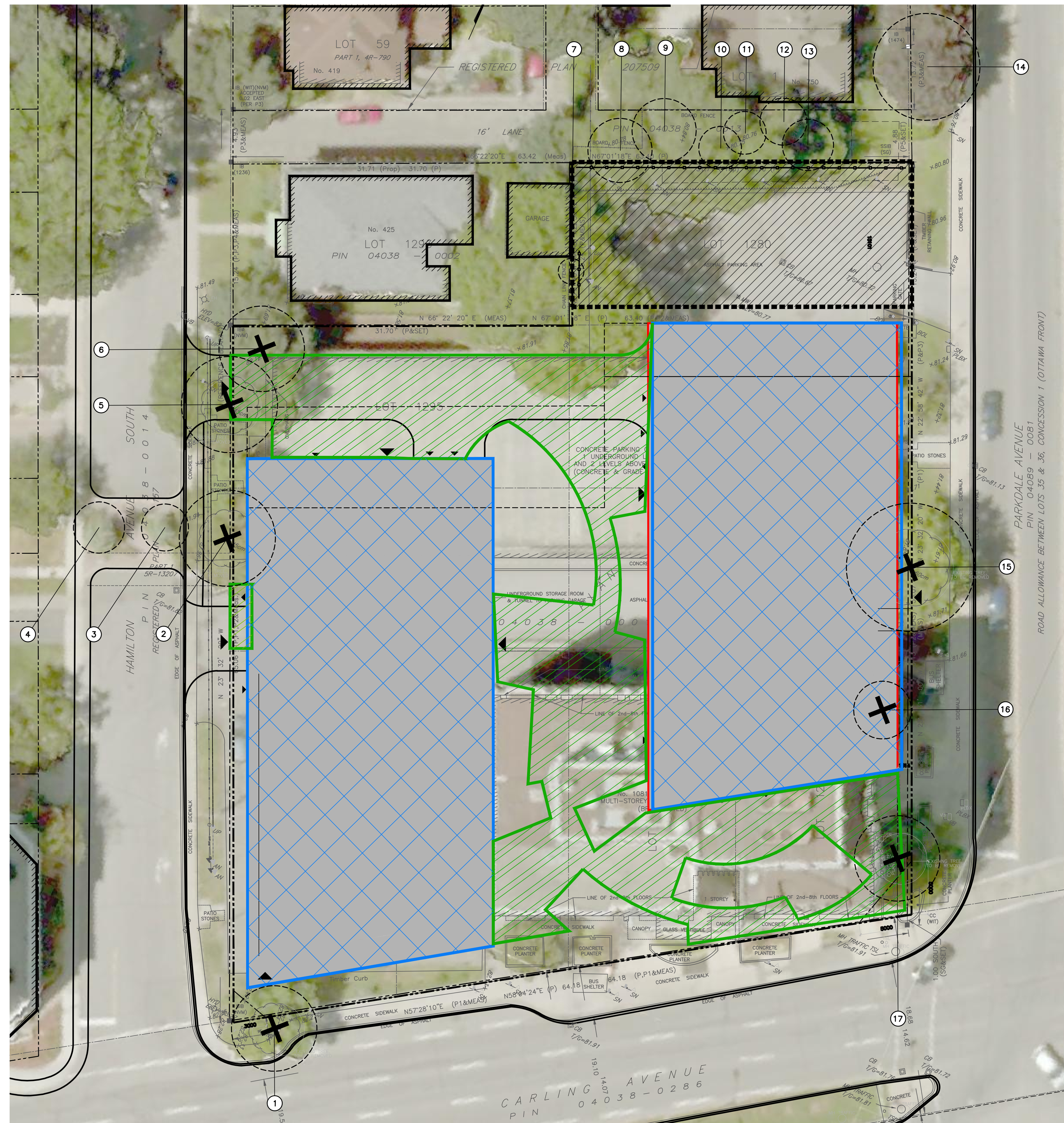
- All measurements in millimeters unless specified otherwise. Do not scale drawing. All drawings to be read in conjunction with written specifications.
- Copyright reserved. This drawing is the exclusive property of CSW Landscape Architects Ltd. and shall not be used without the consent thereof.
- This Drawing may not be used for construction until signed by the landscape architect. It is the responsibility of the contractor to:
 - check and verify all dimensions on site;
 - report all errors and/or omissions to the landscape architect;
 - comply with all pertinent codes and by-laws;
 - check and verify locations of all underground services with all local utilities prior to any digging.

Project:
TAGGART REALTY
1081 CARLING AVENUE

1081 CARLING AVENUE
 OTTAWA, ONTARIO

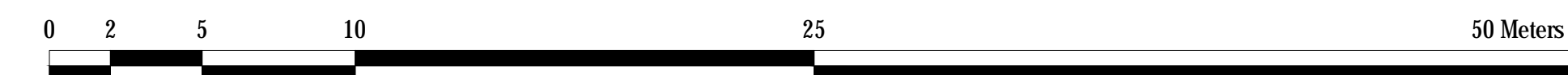
Drawing:
TREE CONSERVATION REPORT

Scale: 1:200	Date: AUG, 2021
Design By: PG	Drawn By: PG
Project Number: 2100-01	Sheet Number: TCR 01



1 PROPOSED DEVELOPMENT

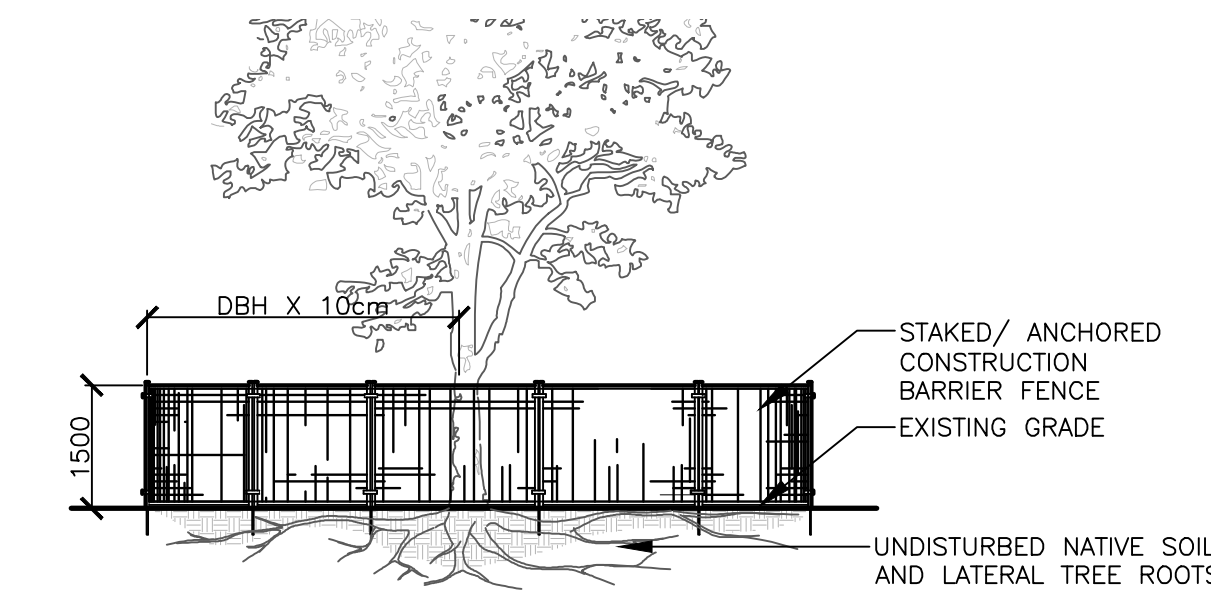
Scale: 1:200



2 TREE PROTECTION FENCING

Scale: N.T.S

Tree #	Botanical Name	Common Name	DBH (cm)	Ownership	Condition	Comments	Arborist Proposal
1	Acer Freemanii	Freeman Maple	40	City	Moderate/Poor	Asymmetrical canopy. Die back -15% @ canopy. Broken limbs. Pruned @ limbs & leader. Single stem. Bark rot @ trunk. Girdled roots.	Remove
2	Acer platanoides	Norway Maple	45	City	Poor	Asymmetrical canopy. Die back -60% @ canopy. Pruned limbs @ overhead utilities. Single stem. Bark rot @ limbs & crotches. Leaf torch.	Remove
3	Picea pungens var. glauca	Colorado Blue Spruce	22	City	Good	Symmetrical canopy. Die back -5% @ branches. Limbed up. Single stem.	Retain
4	Picea pungens var. glauca	Colorado Blue Spruce	24	City	Good	Symmetrical canopy. Limbed up. Single stem.	Retain
5	Acer platanoides	Norway Maple	45	City/Private	Moderate	Asymmetrical canopy. Die back -10% @ canopy. Broken limbs. Pruned limbs @ overhead utilities. Single stem. Bark rot @ trunk.	Remove
6	Acer platanoides	Norway Maple	40	Private	Good	Asymmetrical canopy. Broken limbs. Single stem.	Remove
7	Ulmus spp	Elm	4 @ 12	Private	Good	Symmetrical canopy. Multi stem: 4.	Retain
8	Ulmus spp	Elm	30	Private	Good	Asymmetrical canopy. Broken limbs. Single stem.	Retain
9	Ulmus spp	Elm	55	Private	Good	Asymmetrical canopy. Pruned @ limbs. Single stem. Leaning.	Retain
10	Acer negundo	Manitoba Maple	20	Private	Good	Asymmetrical canopy. Poor branch angle. Single stem. Leaning.	Retain
11	Acer negundo	Manitoba Maple	2 @ 20	Private	Good	Asymmetrical canopy. Broken limbs. Multi stem: 2. Included bark.	Retain
12	Acer negundo	Boxelder Maple	2 @ 24	Private	Good	Asymmetrical canopy. Multi stem: 2. Leaning.	Retain
13	Acer negundo	Boxelder Maple	22	Private	Good	Asymmetrical canopy. Single stem. Leaning.	Retain
14	Acer platanoides 'Crimson King'	Crimson King Norway Maple	50	City	Good	Symmetrical canopy. Pruned @ limbs. Single stem. Included bark.	Retain
15	Acer Saccharum	Sugar Maple	60	City	Good	Asymmetrical canopy. Die back -5% @ canopy. Single stem. Co-dominant leaders: 2 @ -2m above grade. Bark rot @ crotches.	Remove
16	Pinus nigra	Austrian Pine	27	Private	Good	Asymmetrical canopy. Limbed up. Single stem.	Remove
17	Gleditsia triacanthos	Honey Locust	40	Private	Good	Asymmetrical canopy. Die back -5% @ canopy. Broken limbs. Poor branch angle. Single stem.	Remove



- NOTES:
- THE FOLLOWING PROTECTION MEASURES MUST BE IMPLEMENTED FOR RETAINED TREES, BOTH ON SITE AND ADJACENT SITES, PRIOR TO ANY TREE REMOVAL OR SITE WORKS AND MAINTAINED FOR THE DURATION OF CONSTRUCTION ON SITE.
- UNDER THE GUIDANCE OF AN ARBORIST, ERECT A FENCE AT THE CRITICAL ROOT ZONE (CRZ) OF TREES WHERE THE CRZ IS ESTABLISHED AS BEING 10 CENTIMETERS FROM THE TRUNK FOR EVERY CENTIMETER OF TRUNK DIAMETER AT BREAST HEIGHT. THE CRZ IS CALCULATED AS DBH X 10cm.
 - DO NOT PLACE ANY MATERIAL OR EQUIPMENT WITHIN THE CRZ OF THE TREE.
 - DO NOT ATTACH ANY SIGNS, NOTICES OR POSTERS TO ANY TREE.
 - DO NOT RAISE OR LOWER THE GRADE WITHIN THE CRZ WITHOUT APPROVAL.
 - TUNNEL OR BORE WHEN DIGGING WITHIN THE CRZ OF A TREE.
 - DO NOT DAMAGE THE ROOT SYSTEM, TRUNK, OR BRANCHES OR ANY TREE.
 - ENSURE THAT EXHAUST FUMES FROM ALL EQUIPMENT ARE NOT DIRECTED TOWARDS ANY TREE CANOPY.

LEGEND - PROPOSED DEVELOPMENT:

- SITE PROPERTY LINE
- TREE IDENTIFICATION NUMBER
- CRITICAL ROOT ZONE
- TREE TO BE REMOVED
- PROPOSED BUILDING
- PROPOSED HARD SURFACES
- PROPOSED TREE PROTECTION
- PROPERTY SETBACK
 - REFER TO SITE PLAN
- ROAD WIDENING EASEMENT
 - REFER TO SITE PLAN

No.	Revision	Date
1	ISSUED FOR REVIEW	27 AUG 2021

North:

Stamp:

CSW Landscape Architecture
 Urban Design
 Site Planning
 Recreation and Park Planning
 Project Management

319 McRae Avenue, Suite 502, Ottawa, Ontario, K1Z 0B9
 Tel: (613) 729-4536

- All measurements in millimeters unless specified otherwise. Do not scale drawing. All drawings to be read in conjunction with written specifications.
- Copyright reserved. This drawing is the exclusive property of CSW Landscape Architects Ltd. and shall not be used without the consent thereof.
- This Drawing may not be used for construction until signed by the landscape architect. It is the responsibility of the contractor to:
 - check and verify all dimensions on site;
 - report all errors and/or omissions to the landscape architect;
 - comply with all pertinent codes and by-laws;
 - check and verify locations of all underground services with all local utilities prior to any digging.

Project:
TAGGART REALTY
1081 CARLING AVENUE

1081 CARLING AVENUE
 OTTAWA, ONTARIO

Drawing:
TREE CONSERVATION REPORT

Scale: 1:200	Date: AUG, 2021
Design By: PG	Drawn By: PG
Project Number: 2100-01	Sheet Number: TCR 02