

**PROJECT TEAM**

**ARCHITECT**  
HOBIN ARCHITECTURE  
PATRICK BISSON  
T 613-238-7200

**PLANNING**  
FOTENNI CONSULTANTS INC.  
STEPHANIE MORRIS  
T 613-730-3709

**CIVIL**  
J.L. RICHARDS  
LUCIE DALRYMPLE  
T 613-913-4368

**LANDSCAPE ARCHITECT**  
CSW LANDSCAPE ARCHITECTS  
SHERI EDWARDS  
T 613-729-4536

**TRANSPORTATION**  
PARSONS  
MARK BAKER  
T 613-222-8234

**ENVIRONMENTAL**  
GRADIENT WIND ENGINEERING  
JOSHUA FOSTER  
T 613-836-0634

**SURVEYOR**  
STANTEC  
BRIAN WEBSTER  
T 613-229-7644

WIND FRIENDLY GLASS: AS PER CITY WIND SAFETY GUIDELINES OUTLINE 2, TOWER 1 & 2 ARE MARKED AS  
1. GLASS FRI FOR ALL BALCONY RAILINGS OVER 1.8 METRES IN HEIGHT  
2. GLASS FRI FOR ALL BALCONY RAILINGS OVER 0.75 METRES IN HEIGHT

no.	date	revision

It is the responsibility of the appropriate contractor to check and verify all dimensions on site and report all errors and/or omissions to the architect.

All contractors must comply with all pertinent codes and by-laws.

Do not scale drawings.

This drawing may not be used for construction until signed.

Copyright reserved.

**LEGEND**

NEW BUILD:	
AP-1	ALUMINUM PANEL 1
AP-2	ALUMINUM PANEL 2
BV-1	BRICK VENEER
PC	PRECAST CONCRETE
GR	GLASS RAILING
MS-1	METAL SIDING 1
SP	SPANDREL PANEL
VG	VISION GLASS

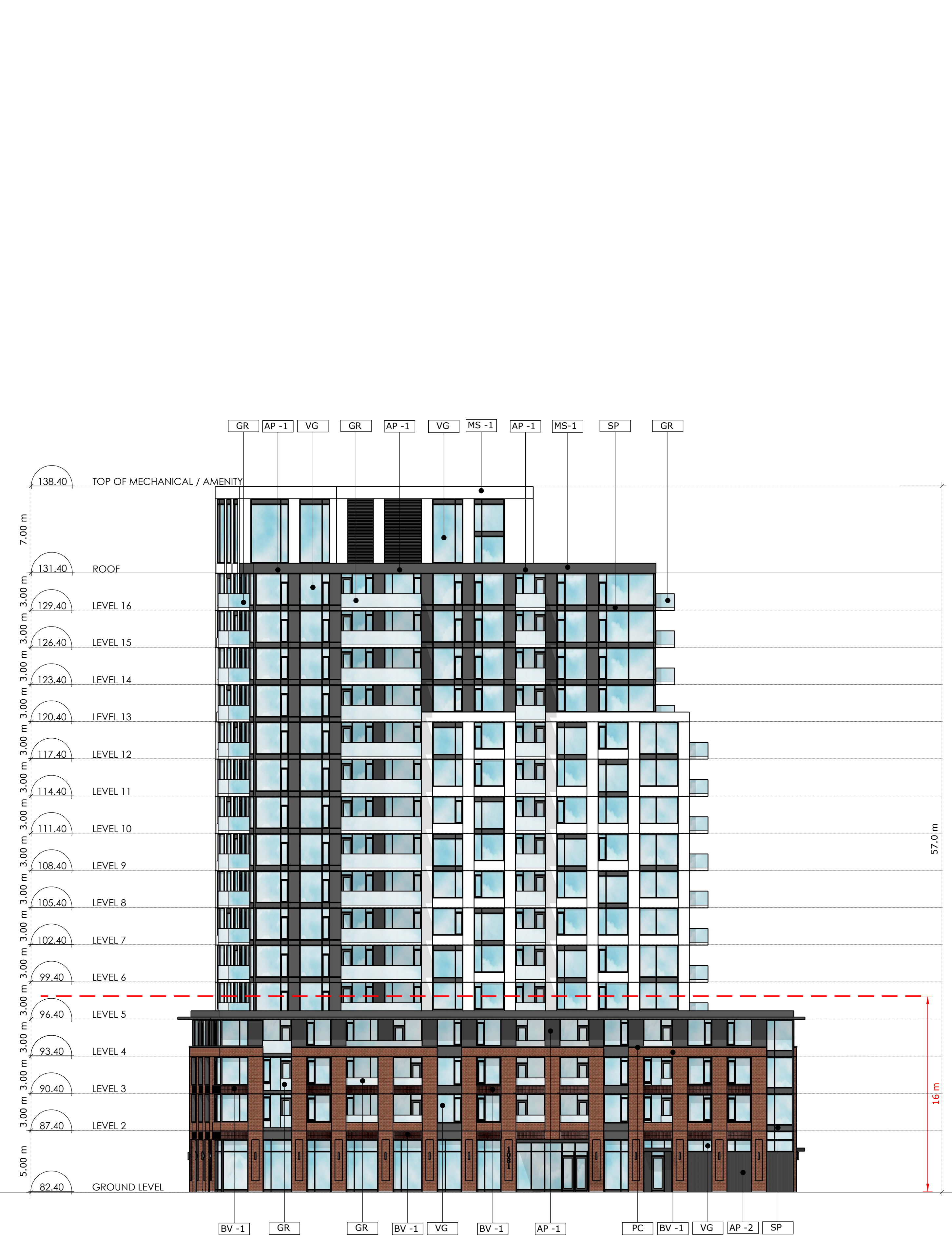
**Hobin Architecture Incorporated**  
63 Pamela Street  
Ottawa, Ontario  
Canada K1S 5K6  
T: 613-238-7200  
F: 613-235-2005  
E: mail@hobinarc.com  
hobinarc.com



**PROJECT/LOCATION:**  
1081 CARLING AVENUE

**DRAWING TITLE:**  
EAST TOWER EAST ELEVATION  
WEST TOWER WEST ELEVATION

<b>DRAWN BY:</b> PB	<b>DATE:</b> 230223	<b>SCALE:</b> 1:200
<b>PROJECT:</b> 2117		<b>DRAWING NO.:</b> A3-00
<b>REVISION NO.:</b>		



1 EAST ELEVATION  
A3.00 Scale: 1: 200

2 EAST ELEVATION -WEST TOWER  
A3.00 Scale: 1: 200

**PROJECT TEAM**

**ARCHITECT**  
HOBIN ARCHITECTURE  
PATRICK BISSON  
T 613-238-7200

**PLANNING**  
FOTENN CONSULTANTS INC.  
STEPHANIE MORRIS  
T 613-730-3709

**CIVIL**  
J.L. RICHARDS  
LUCIE DALRYMPLE  
T 613-913-4368

**LANDSCAPE ARCHITECT**  
CSW LANDSCAPE ARCHITECTS  
SHERI EDWARDS  
T 613-729-4536

**TRANSPORTATION**  
PARSONS  
MARK BAKER  
T 613-222-8234

**ENVIRONMENTAL**  
GRADIENT WIND ENGINEERING  
JOSHUA FOSTER  
T 613-836-0634

**SURVEYOR**  
STANTEC  
BRIAN WEBSTER  
T 613-229-7644

WIND FRIENDLY GLASS: AS PER CITY OF OTTAWA SAFETY GUIDELINES OUTLINE 2.1, TOWER 15 IS A WIND FLYING GLASS CURTAIN WALL SYSTEM. GLASS MUST BE 100% WIND FLYING GLASS. GLASS MUST BE 100% WIND FLYING GLASS. GLASS MUST BE 100% WIND FLYING GLASS.

no.	date	revision

It is the responsibility of the appropriate contractor to check and verify all dimensions on site and report all errors and/or omissions to the architect.

All contractors must comply with all pertinent codes and by-laws.

Do not scale drawings.

This drawing may not be used for construction until signed.

Copyright reserved.

LEGEND:

NEW BUILD:	
AP-1	ALUMINUM PANEL 1
AP-2	ALUMINUM PANEL 2
BV-1	BRICK VENEER
PC	PREFCAST CONCRETE
GR	GLASS RAILING
MS-1	METAL SIDING 1
SP	SPANDREL PANEL
VG	VISION GLASS

**Hobin Architecture Incorporated**  
63 Pamela Street  
Ottawa, Ontario  
Canada K1S 5K6  
T: 613-238-7200  
F: 613-235-2005  
E: mail@hobinarc.com  
hobinarc.com



PROJECT/LOCATION:

1081 CARLING AVENUE

DRAWING TITLE:

EAST TOWER WEST ELEVATION  
+  
WEST TOWER WEST ELEVATION

DRAWN BY: DATE: SCALE:

PB 230223 1:200

PROJECT:

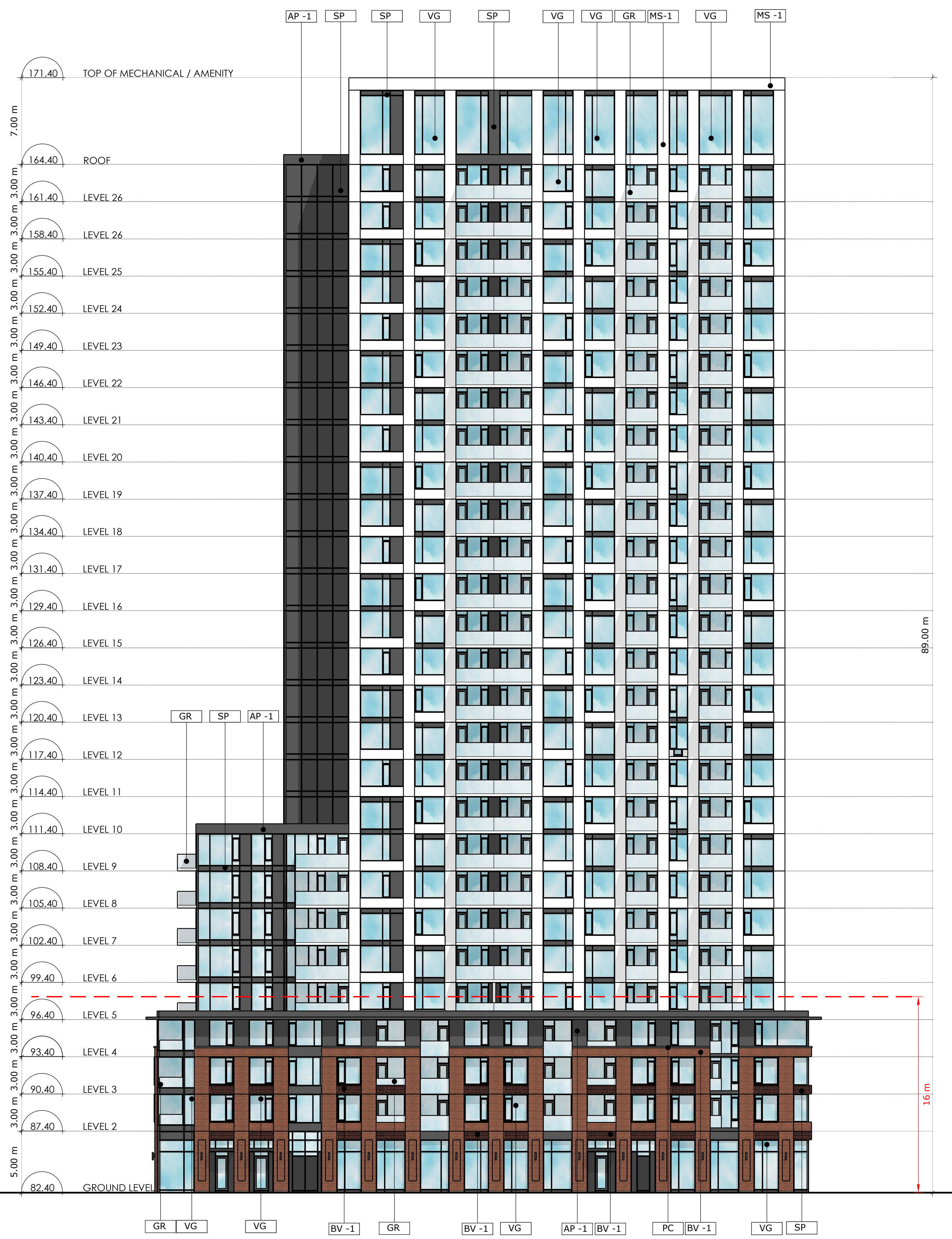
2117  
DRAWING NO.:  
A3-01

REVISION NO.:



**1** WEST ELEVATION

**A3.01** Scale: 1: 200



**2** WEST ELEVATION - EAST TOWER

**A3.01** Scale: 1: 200

**PROJECT TEAM**

**ARCHITECT**  
HOBIN ARCHITECTURE  
PATRICK BISSON  
T 613-238-7200

**PLANNING**  
FOTENNI CONSULTANTS INC.  
STEPHANIE MORRIS  
T 613-730-3709

**CIVIL**  
J.L. RICHARDS  
LUCIE DALRYMPLE  
T 613-913-4368

**LANDSCAPE ARCHITECT**  
CSW LANDSCAPE ARCHITECTS  
SHERI EDWARDS  
T 613-729-4536

**TRANSPORTATION**  
PARSONS  
MARK BAKER  
T 613-222-8234

**ENVIRONMENTAL**  
GRADIENT WIND ENGINEERING  
JOSHUA FOSTER  
T 613-836-0634

**SURVEYOR**  
STANTEC  
BRIAN WEBSTER  
T 613-229-7444

WIND FRIENDLY GLASS: AS PER CITY OF OTTAWA SAFETY GUIDELINE 2.1, TYPICAL 3.0 m x 6.0 m PANELS TO BE GLAZED FOR ALL BALCONY RAILINGS OVER 1.0 METRES IN HEIGHT. GLASS PER FOR ALL BALCONY RAILINGS OVER 1.0 METRES IN HEIGHT.

no.	date	revision

It is the responsibility of the appropriate contractor to check and verify all dimensions on site and report all errors and/or omissions to the architect.

All contractors must comply with all pertinent codes and by-laws.

Do not scale drawings.

This drawing may not be used for construction until signed.

Copyright reserved.

**LEGEND**

NEW BUILD:	
AP-1	ALUMINUM PANEL 1
AP-2	ALUMINUM PANEL 2
BV-1	BRICK VENEER
PC	PRECAST CONCRETE
GR	GLASS RAILING
MS-1	METAL SIDING 1
SP	SPANDREL PANEL
VG	VISION GLASS

**Hobin Architecture Incorporated**  
63 Pamela Street  
Ottawa, Ontario  
Canada K1S 5K6  
T: 613-238-7200  
F: 613-235-2005  
E: mail@hobinarc.com  
hobinarc.com



**PROJECT/LOCATION:**

1081 CARLING AVENUE

**DRAWING TITLE:**

NORTH ELEVATIONS  
+  
SOUTH ELEVATIONS

**DRAWN BY:**  
PB

**DATE:**  
230223

**SCALE:**  
1:200

**PROJECT:**  
2117

**DRAWING NO.:**

A3-02

**REVISION NO.:**



**1** NORTH ELEVATION

**A3.03** Scale: 1: 200



**2** SOUTH ELEVATION

**A3.03** Scale: 1: 200

