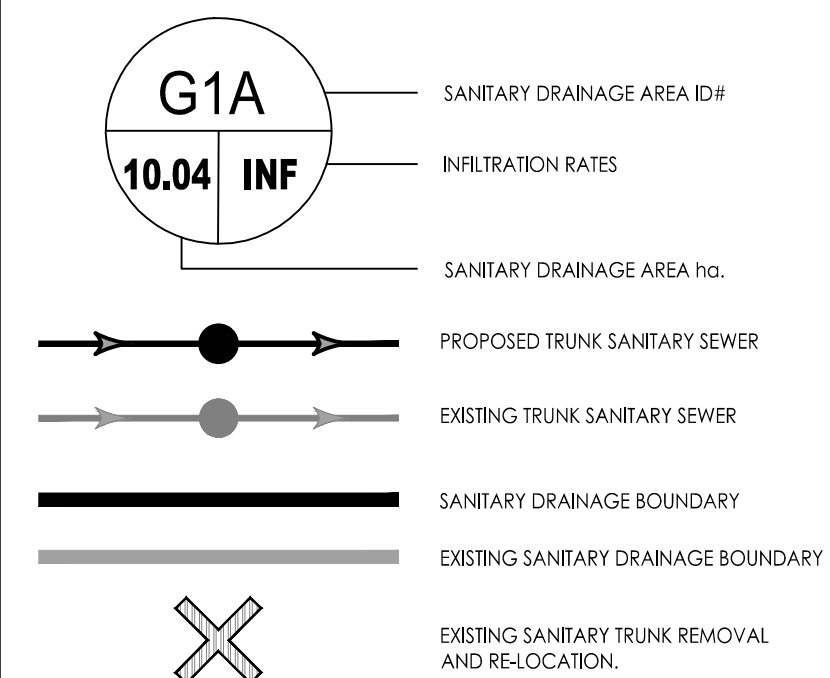
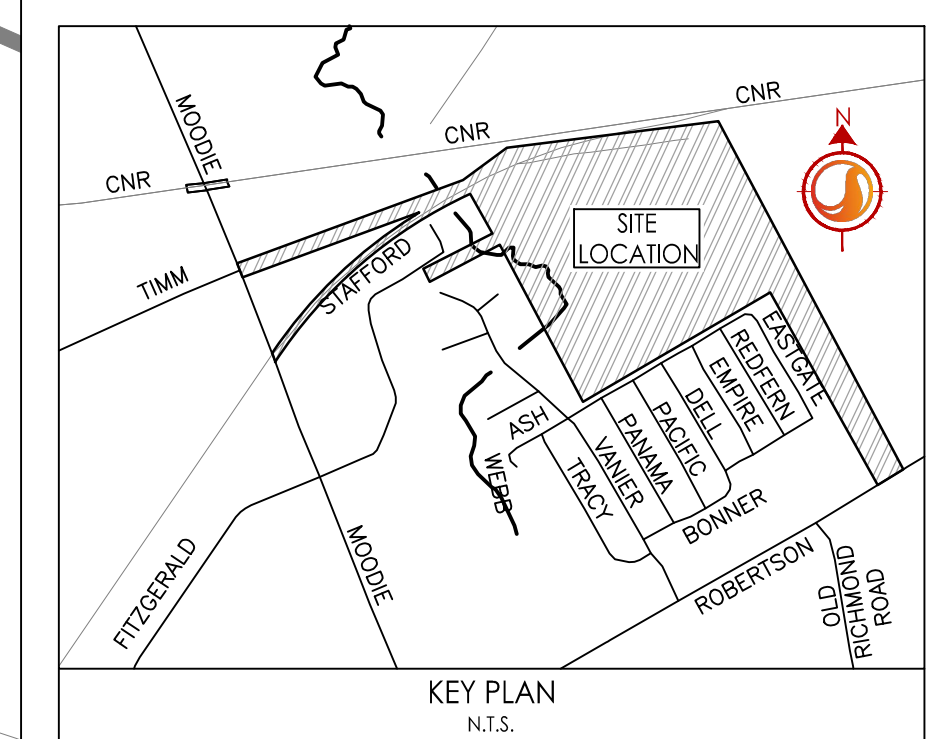
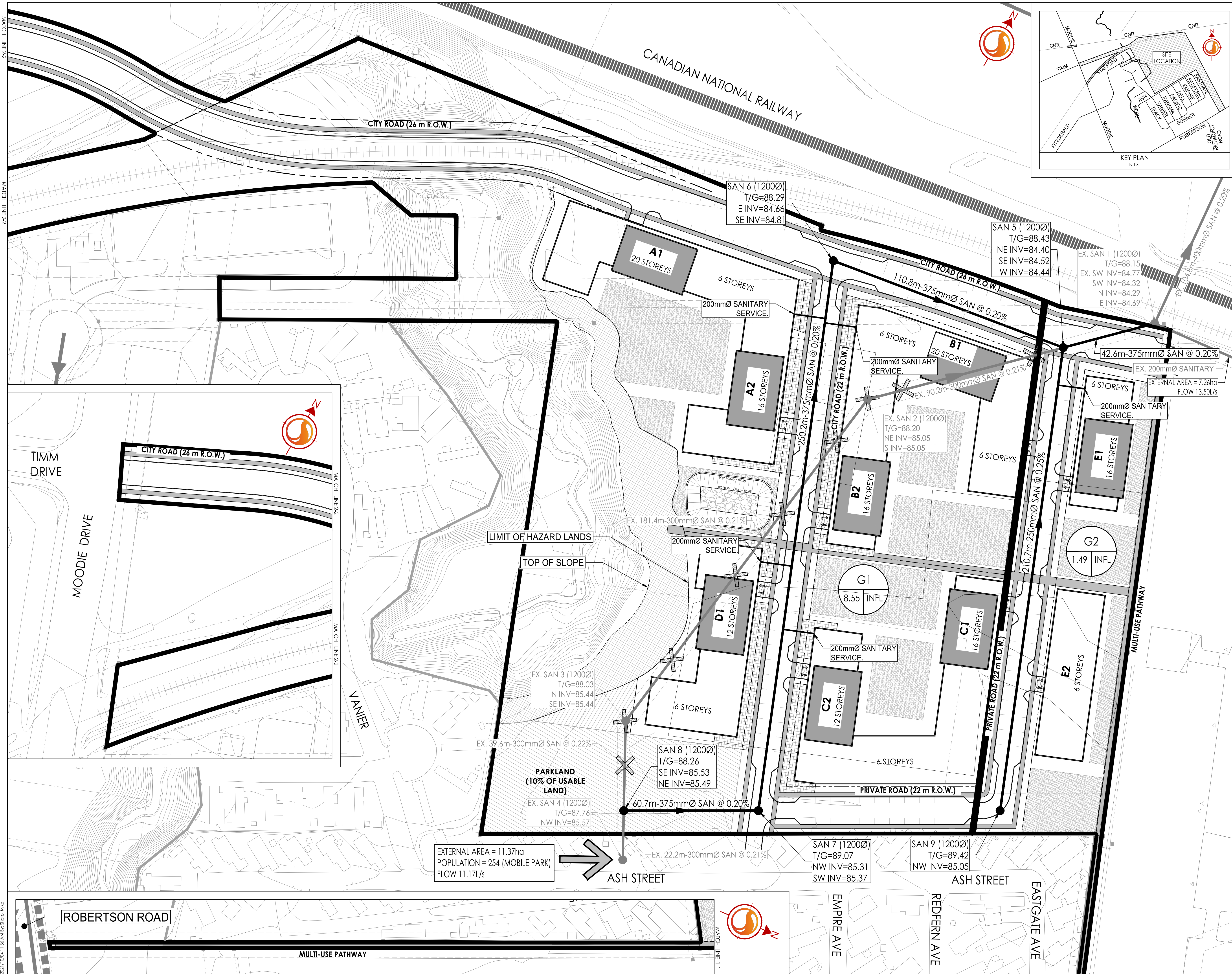


Legend



Notes

SANITARY STATS	
BUILDING A1 UNIT COUNT AND COMMERCIAL AREA	
274 - UNITS @ 1.8PPU = 493 PEOPLE	COMMERCIAL AREA = 330m ²
BUILDING A2 UNIT COUNT AND COMMERCIAL AREA	
233 - UNITS @ 1.8PPU = 419 PEOPLE	COMMERCIAL AREA = 660m ²
BUILDING B1 UNIT COUNT AND COMMERCIAL AREA	
271 - UNITS @ 1.8PPU = 488 PEOPLE	COMMERCIAL AREA = 320m ²
BUILDING B2 UNIT COUNT AND COMMERCIAL AREA	
230 - UNITS @ 1.8PPU = 414 PEOPLE	COMMERCIAL AREA = 880m ²
BUILDING C1 UNIT COUNT AND COMMERCIAL AREA	
233 - UNITS @ 1.8PPU = 419 PEOPLE	COMMERCIAL AREA = 320m ²
BUILDING C2 UNIT COUNT AND COMMERCIAL AREA	
192 - UNITS @ 1.8PPU = 346 PEOPLE	COMMERCIAL AREA = 700m ²
BUILDING D1 UNIT COUNT AND COMMERCIAL AREA	
207 - UNITS @ 1.8PPU = 373 PEOPLE	COMMERCIAL AREA = 980m ²
BUILDING E1 UNIT COUNT AND COMMERCIAL AREA	
173 - UNITS @ 1.8PPU = 311 PEOPLE	COMMERCIAL AREA = 980m ²
BUILDING E2 UNIT COUNT AND COMMERCIAL AREA	
112 - UNITS @ 1.8PPU = 202 PEOPLE	COMMERCIAL AREA = 980m ²
TOTAL POPULATION = 3465	
TOTAL COMMERCIAL SPACE = 3870m ² (0.387ha) @ 28,000 L/ha/day	



Revision	By	Appd.	Date
0	ISSUED FOR COORDINATION	MJS	TR 21.09.22

Permit-Seal



Client/Project
THE PROPERTIES GROUP
MANAGEMENT LTD.

STILLWATER STATION
1987 ROBERTSON ROAD
OTTAWA, ON, CANADA

Title
SANITARY SEWER NETWORK AND
DRAINAGE PLAN

Project No. 160401686	Scale 1:750	Sheet 3 of 5	Revision 0
--------------------------	----------------	-----------------	---------------