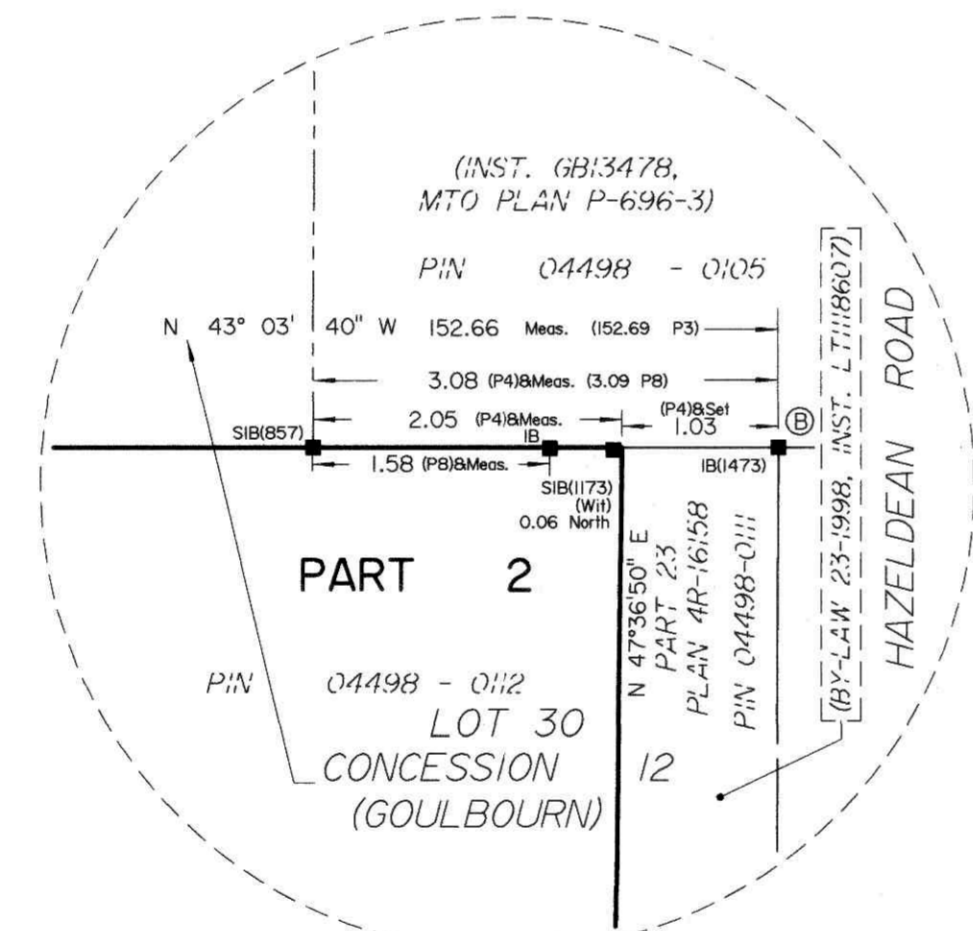
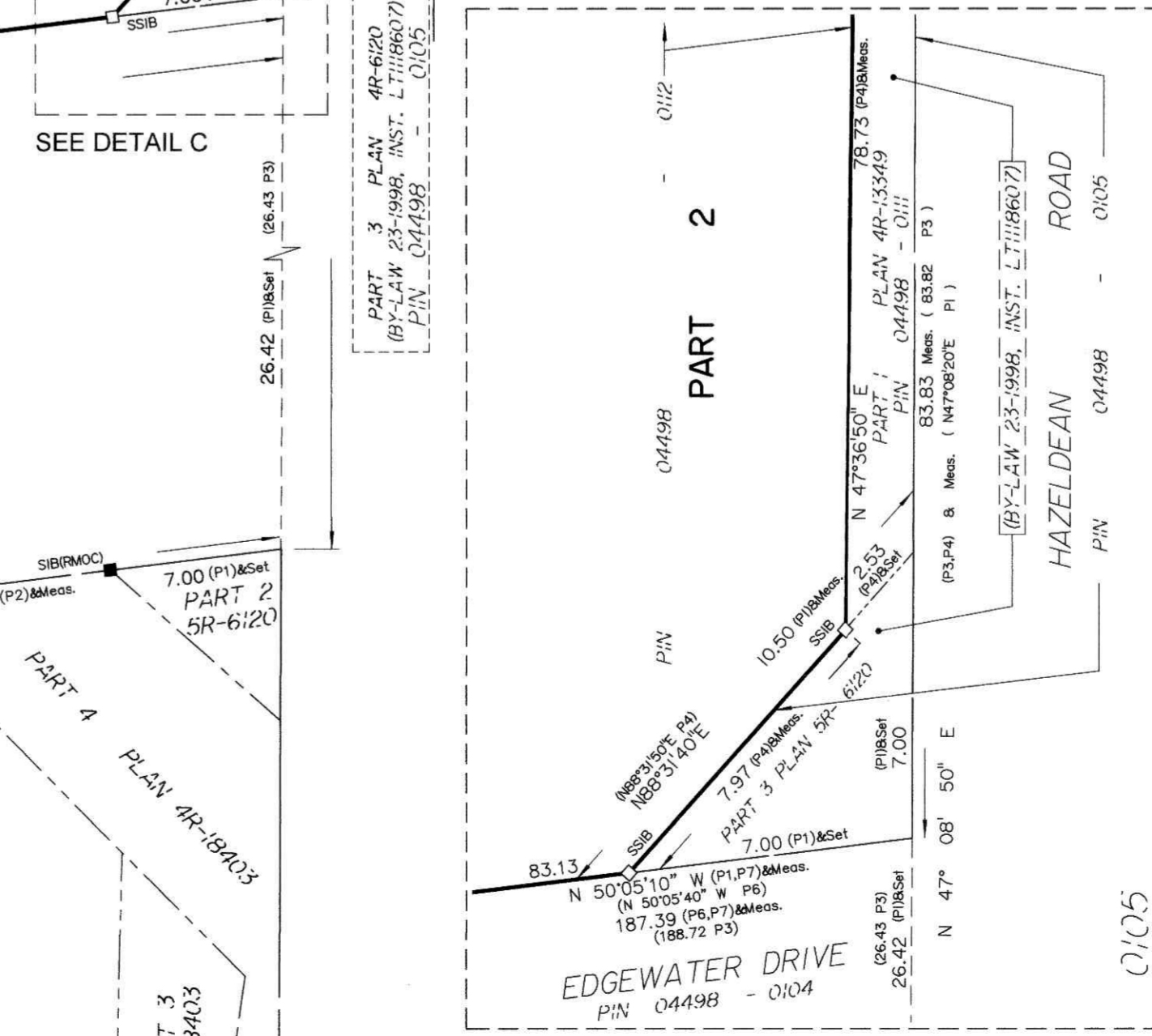


DETAIL A
SCALE 1:50



DETAIL B
SCALE 1:50



DETAIL C
SCALE 1:150

I REQUIRE THIS PLAN TO BE DEPOSITED UNDER THE LAND TITLES ACT.
DATE: October 31, 2018

PLAN 4R-31503
RECEIVED AND DEPOSITED DATE: Oct 31, 2018

A.S. Broxham
ANDREW J. BROXHAM
ONTARIO LAND SURVEYOR

D. Bourdeau
REPRESENTATIVE FOR
LAND REGISTRAR FOR THE
LAND TITLES DIVISION OF
OTTAWA-CARLETON NO. 4.

SCHEDULE

PART	LOT	CONCESSION	PIN
1	PART OF 30	12	ALL OF 04498-0112
2			

PLAN OF SURVEY OF
PART OF LOT 30
CONCESSION 12
GEOGRAPHIC TOWNSHIP OF GOULBOURN
CITY OF OTTAWA
Surveyed by Annis, O'Sullivan, Vollebek Ltd.

Scale 1 : 250

Metric
DISTANCES AND COORDINATES SHOWN ON THIS PLAN ARE IN METRES AND CAN BE CONVERTED TO FEET BY DIVIDING BY 0.3048.

Surveyor's Certificate
I CERTIFY THAT:
1. This survey and plan are correct and in accordance with the Surveys Act, the Surveyors Act and the Land Titles Act and the regulations made under them.
2. The survey was completed on the 29th day of October, 2018.

October 30, 2018
Date

A.S. Broxham
Andrew J. Broxham
Ontario Land Surveyor

Notes & Legend

Symbol	Denotes	Survey Monument Planted
—	Denotes	Survey Monument Found
SIB	Standard Iron Bar	
SSIB	Short Standard Iron Bar	
IB	Iron Bar	
(WIT)	Witness	
(AOC)	Annis, O'Sullivan, Vollebek Ltd.	
Meas.	Measured	
(P1)	Plan 5R-6120	
(P2)	Plan 4R-15403	
(P3)	Plan 5R-2711	
(P4)	Plan 4R-13349	
(P5)	Plan 4R-17168	
(P6)	Plan 4R-16158	
(P7)	Plan by (857) dated April 26, 1988	
(P8)	Plan by (1474) dated June 12, 2001	
CLF	Chain Link Fence	
BF	Board Fence	

Distances shown on this plan are ground distances and can be converted to grid distances by multiplying by the combined scale factor of 0.999612.

Bearings are grid, derived from Can-Net 2016 Real Time Network GPS observations on reference points A and B, shown hereon, having a bearing of N43°04'00"W and are referenced to Specified Control Points 01919750705 and 01919770923, MTM Zone 9 (76°30' West Longitude) NAD-83 (original).

For bearing comparisons, a rotation of 0°26'30" counter-clockwise was applied to bearings on P3, P4, P5 & P6.

For bearing comparisons, a rotation of 0°28'40" counter-clockwise was applied to bearings on P7.

Coordinates are derived from Can-Net 2016 Real Time Network GPS observations referenced to Specified Control Points 01919750705 and 01919770923, MTM Zone 9 (76°30' West Longitude) NAD-83 (original).

Coordinate values are to urban accuracy in accordance with O. Reg. 216/10.

01919750705	Northing	5018816.93	Eastings	360806.84
01919770923	Northing	5013538.21	Eastings	346275.92
Point A	Northing	5017536.57	Eastings	352277.65
Point B	Northing	5017425.04	Eastings	352381.89

Cautions: Coordinates cannot, in themselves, be used to re-establish corners or boundaries shown on this plan.

ANNIS, O'SULLIVAN, VOLLEBEK LTD.
14 Concourse Gate, Suite 500
Napanee, Ont. K2E 7S5
Phone: (613) 727-0850 / Fax: (613) 727-1079
E-mail: info@anniso.com

Ontario Land Surveyors
Reg. No. 88940-18 Tim: 4662626 PL 1302012 R.F. L.M.