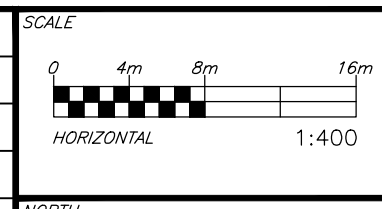


- NOTES:**
1. THE LOCATION OF UTILITIES IS APPROXIMATE ONLY, AND THE EXACT LOCATION SHOULD BE DETERMINED BY CONSULTING THE MUNICIPAL AUTHORITIES AND UTILITY COMPANIES CONCERNED. THE CONTRACTOR IS RESPONSIBLE TO PROVIDE THE LOCATION AND STATUS OF UTILITIES AND SHALL BE RESPONSIBLE FOR ADEQUATE PROTECTION OF PLANT AND EQUIPMENT FROM DAMAGE UNTIL SUCH TIME AS THE SERVICE PROVIDER HAS CONFIRMED IN WRITING THE SERVICE IS ABANDONED AND CAN BE REMOVED. THE CONTRACTOR SHALL BE RESPONSIBLE FOR REPAIR OR REPLACEMENT OF ANY SERVICES OR UTILITIES DISTURBED DURING CONSTRUCTION, TO THE SATISFACTION OF THE AUTHORITY HAVING JURISDICTION.
 2. THE CONTRACTOR SHALL VERIFY THE LOCATION AND ELEVATION OF EXISTING SERVICES PRIOR TO ANY CONSTRUCTION. THE CONTRACTOR SHALL CONFIRM LOCATIONS AND ELEVATIONS OF EXISTING SERVICES PRIOR TO COMMENCING CONSTRUCTION. ALL DIMENSIONS SHALL BE CHECKED AND VERIFIED IN THE FIELD BY THE CONTRACTOR PRIOR TO THE START OF CONSTRUCTION. ANY DISCREPANCIES, INTERPRETATIONS, CHANGES AND ADDITIONS TO THESE DRAWINGS MUST BE BROUGHT TO THE ATTENTION OF THE ENGINEER, WHEN NOTED AND BEFORE PROCEEDING WITH CONSTRUCTION WORKS. DO NOT CONTINUE CONSTRUCTION IN AREAS WHERE DISCREPANCIES APPEAR UNTIL SUCH DISCREPANCIES HAVE BEEN RESOLVED.
 3. FOR ADDITIONAL PROJECT NOTES REFER TO DRAWING C001.

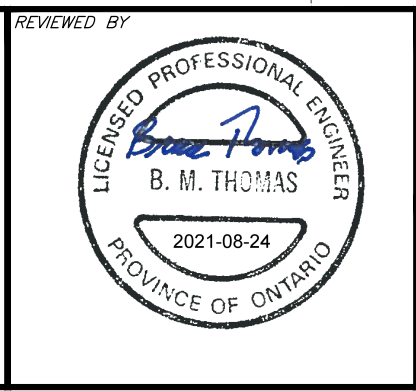
CAUTION
 THE POSITION OF ALL POLE LINES, CONDUITS, WATERMANS, SEWERS AND OTHER UNDERGROUND AND OVERGROUND UTILITIES AND STRUCTURES IS NOT NECESSARILY SHOWN ON THE CONTRACT DRAWINGS, AND WHERE SHOWN, THE ACCURACY OF THE POSITION OF SUCH UTILITIES AND STRUCTURES IS NOT GUARANTEED. BEFORE STARTING WORK, DETERMINE THE EXACT LOCATION OF ALL SUCH UTILITIES AND STRUCTURES AND ASSUME ALL LIABILITY FOR DAMAGE TO THEM.

REV	REVISION DESCRIPTION	DATE	BY	APPD
2	ISSUED FOR SPA	16/08/21	AE	BMT
1	ISSUED FOR COORDINATION	09/07/21	AE	BMT

REV	REVISION DESCRIPTION	DATE	BY	APPD
2	ISSUED FOR SPA	16/08/21	AE	BMT
1	ISSUED FOR COORDINATION	09/07/21	AE	BMT



DESIGNED BY
 B. M. THOMAS
 2021-08-24
 PROVINCE OF ONTARIO



CLIENT
11421247 CANADA INC.
 100-768 ST. JOSEPH BOULEVARD
 GATINEAU, QC. J8Y 4B8

exp.
 exp Services Inc.
 1-1-613-688-1899 | F-1-613-225-7330
 3625 Capreol Avenue, Unit 100
 Ottawa, ON K2B 8K6
 Canada
 www.exp.com
 • BUILDINGS • EARTH & ENVIRONMENT • ENERGY •
 • INDUSTRIAL • INFRASTRUCTURE • SUSTAINABILITY •

BASE PLAN	SK
DESIGN	JLF/AO
CHECKED	BMT
CAD	SK
PROJECT MANAGER	BMT
APPROVED	BMT

PROJECT
**ST. LAURENT BOULEVARD
 DEVELOPMENT**
 1740-1760 ST. LAURENT BLVD., OTTAWA, ON

TITLE
**EXISTING CONDITIONS
 AND REMOVALS PLAN**

PROJECT No.
OTT-260579-B0

SURVEY
AOV

DATE
OCT 2020

DRAWING No.
C002

File Name: \\s11-02086679-4\01-00-000-00000000.dwg
 User: Store\27/2/2021 11:10:55am\Store\27/2/2021 11:11:30am\Bjgagnon
 Reference: \\s11-02086679-4\01-00-000-00000000.dwg