

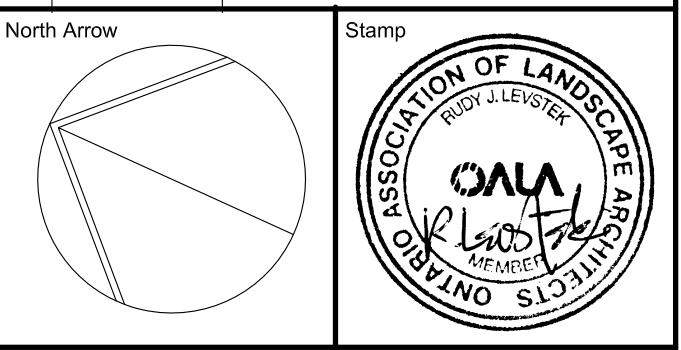
LEGEND / SYMBOL

- EXISTING TREE TO BE RETAINED (SEE TCP.1)
- CRZ (Critical Root Zone)
- PROPOSED DECIDUOUS TREE DETAIL 1L1.01
- PROPOSED CONIFEROUS TREE DETAIL 1L1.01
- PROPOSED SHRUBS / PERENNIALS / GRASSES DETAIL 1L1.01
- PROPOSED CONCRETE WALKWAY
- PROPOSED DECORATIVE AGGREGATE
- PROPOSED BICYCLE PARKING SPACES PROVIDED: 10
- PROPOSED BICYCLE RACK PROPOSED QT = 5 DETAIL 2L1.01
- RETAINING WALL (REFER TO ENGINEERING)
- LIMIT OF PHASE 1 EXTENT OF WORK
- LIMIT OF PHASE 1 BOUNDARY

- GENERAL NOTES**
- This drawing shall be read in conjunction with all relevant Architectural, Engineering and related Drawings and Documents. Refer to Engineering Drawings for Grading and Servicing.
 - Refer to Architectural Drawings for Site layout.
 - Contractor shall provide the location(s) of all services/utilities by consulting Municipal Authorities and Utility companies and shall be responsible for adequate protection from damage during construction.
 - Plant material shall be No. 1 Grade and shall comply with the Metro Guide Specifications For Nursery Stock (latest edition), published by the Canadian Nursery Trades Association.
 - Plant Material locations are **Schematic / Approximate only**. Contractor shall stake out locations on site prior to work.
 - Contractor shall guarantee all plant material for a period of one (1) full year from the date of final acceptance.
 - Shrubs** shall be planted in a continuous prepared bed of 450mm depth planting soil mix covered over with a woven polypropylene weed control fabric (**LANDSCAPE FABRIC-Green-Line by Thraex-LINQ**) and 75mm depth composted pine mulch to finish grade, as specified.
 - Perennials and Ornamental Grasses** shall be planted in a continuous prepared bed of 450mm depth planting soil mix covered over with 75mm depth composted pine mulch to finish grade. (**NO WEED CONTROL FABRIC**), as specified.
 - Sod areas to receive 125mm topsoil. Sod shall be No. 1 quality conforming to the Canadian Nursery Sod Growers Specification.
 - Reinstate all areas damaged or disturbed beyond the limit of Work.
 - Plant Material substitutions shall not be permitted without written approval from the Consultant.
 - Refer to **TREE CONSERVATION PLAN (TCP.1)** which has been submitted in support of this Site Plan Approval. Contractor shall advise Consultant a minimum of 48hrs. prior to proceeding landscape work and any required Field Reviews.
 - THIS PLAN HAS BEEN PREPARED FOR MUNICIPAL SITE PLAN APPROVAL ONLY AND MAY NOT BE USED FOR ANY OTHER PURPOSE.**

FOR APPROVAL ONLY

no.	date	revision
4.	OCT.19/23	RE-ISSUE FOR SITE PLAN APPROVAL
3.	MAY 16/23	ISSUE FOR UDPR
2.	OCT.28/21	ISSUE FOR SITE PLAN APPROVAL
1.	OCT.19/21	ISSUE FOR REVIEW / COORDINATION(2)



Contractor shall check and verify all dimensions on site and report all errors and/or omissions to the Consultant.
Work to be done in accordance with all applicable codes and by-laws.
Do not scale Drawing.
This Drawing shall not be used for construction until signed by the Consultant.
Copyright reserved. This Drawing is the exclusive property of Levstek Consultants Inc. and shall not be used without consent.

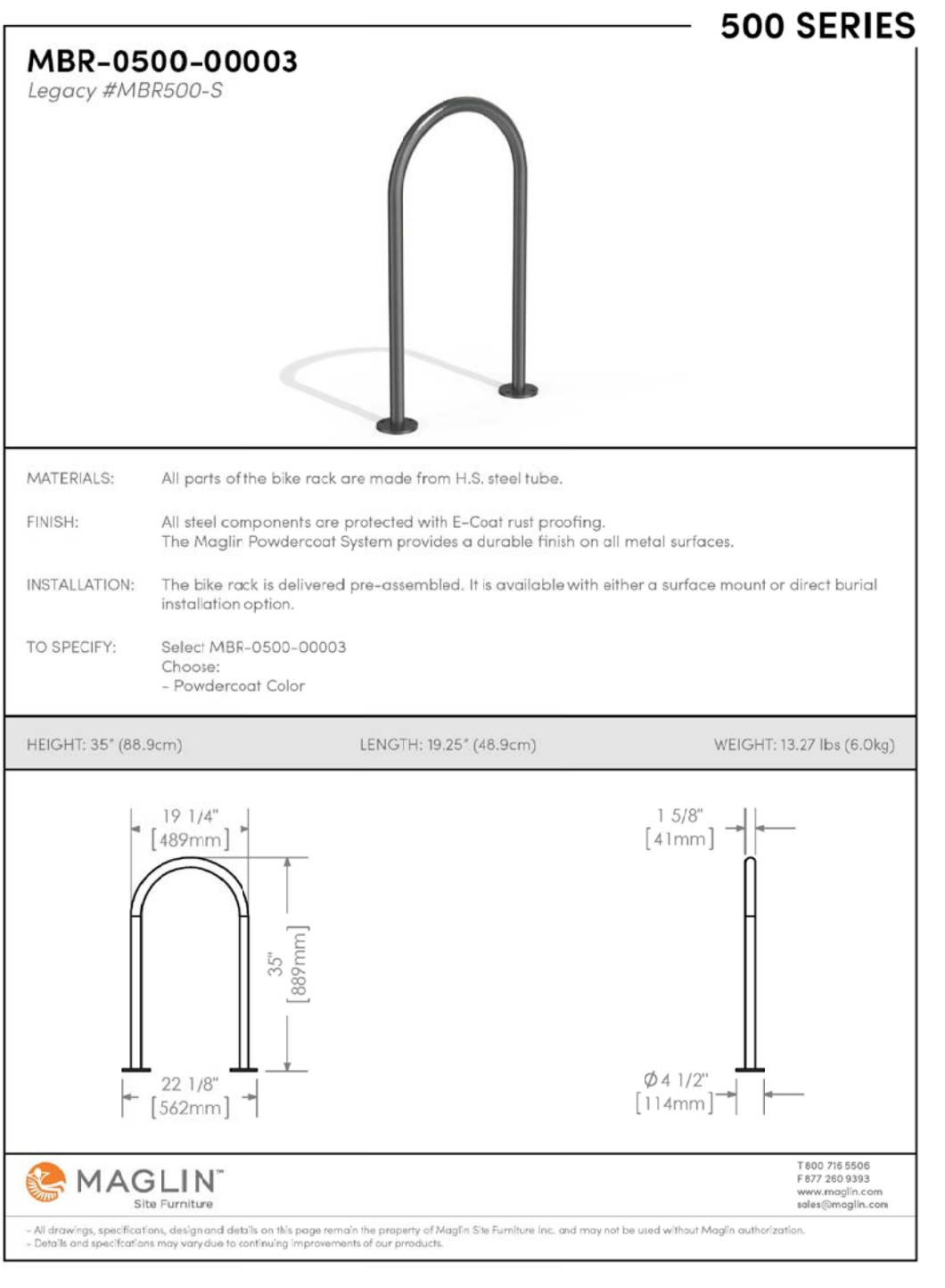
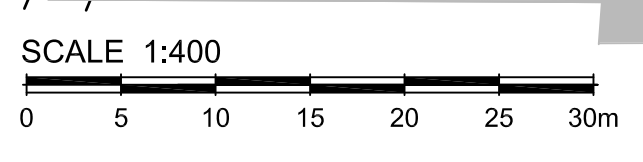
Consultant
LEVSTEK CONSULTANTS ARCHITECTS
5871 Hugh Crockett - Ottawa - Ontario - K0A 2W0
613 - 824 - 9818

Client
SMARTCENTRES
REAL ESTATE INVESTMENT TRUST

Project
SOUTH KEYS REDEVELOPMENT PHASE 1
2200 BANK STREET

Drawing Title
LANDSCAPE PLAN

Drawn: **MGB** Project No.: **1194** Drawing No.: **L1.01**

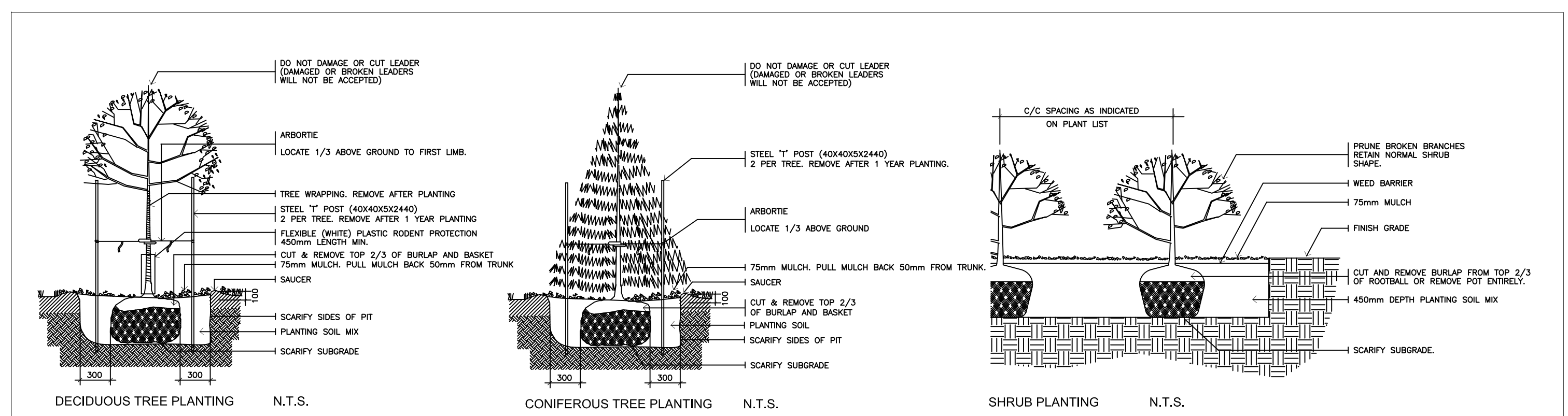


INSTALLATION: SURFACE MOUNT
FINISH: GLOSS BLACK

2
L1.01 BICYCLE RACK NTS

PLANT MATERIAL SCHEDULE

CODE	BOTANICAL NAME	COMMON NAME	QTY.	SIZE	REMARKS
DECIDUOUS TREES					
AC	AMELANCHIER CANADENSIS	SHADEBLOW SERVICEBERRY	7	50mm cal	B&B, single stem
AEJ	ACER X FREEMANII JEFFERSRED	AUTUMN BLAZE MAPLE	7	50mm cal	B&B, single stem
CO	CELTIS OCCIDENTALIS	COMMON HACKBERRY	5	50mm cal	B&B, single stem
OM	QUERCUS MACROCARPA	BUR OAK	2	50mm cal	B&B, single stem
ORF	QUERCUS ROBUR FASTIGIATA	PYRAMIDAL ENGLISH OAK	4	50mm cal	B&B, single stem
SR	SYRINGA RETICULATA 'IVORY SILK'	IVORY SILK JAPANESE TREE LILAC	2	50mm cal	B&B, single stem
DECIDUOUS SHRUBS					
LCR	CORNUS RACEMOSA	GRAY DOGWOOD	140	50cm ht	potted, 120cm o/c
HPP	HYDRANGEA PANICULATA 'PHANTOM'	PHANTOM HYDRANGEA	63	50cm ht	potted, 100cm o/c
PFF	POTENTILLA FRUTICOSA 'FARRERI'	GOLDDROP CINQUEFOIL	44	50cm ht	potted, 80cm o/c
RB	ROSA BLANDA	SHRUB ROSE	29	50cm ht	potted, 100cm o/c
RHA	RHUS AROMATICA	FRAGRANT SUMAC	25	50cm ht	potted, 100cm o/c
SJF	SPIRAEA JAPONICA 'FROEBELI'	FROEBEL SPIREA	55	50cm ht	potted, 100cm o/c
PERENNIALS					
Hem	HEMEROCALLIS 'Hyperion'	Hyperion DAYLILY	100	15 cm pot	plant 50cm o/c
ORNAMENTAL GRASSES					
Spo	SPOROBOLUS heterolepis	PRAIRIE DROPSEED	48	15cm pot	plant 75cm o/c

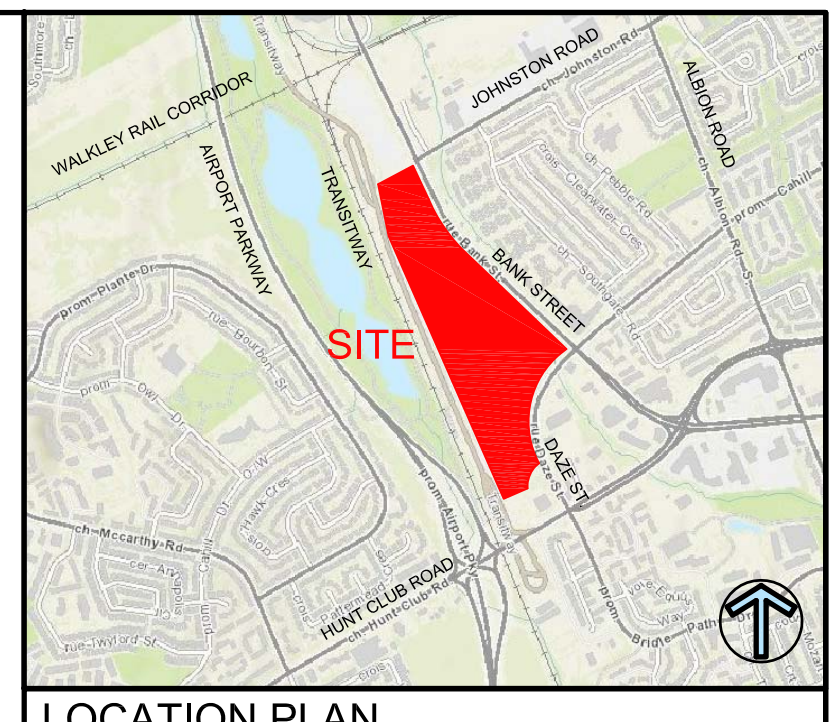


1
L1.01 PLANTING DETAILS NTS

PLANT MATERIAL SCHEDULE

LEVEL 3 PODIUM

CODE	BOTANICAL NAME	COMMON NAME	QTY.	SIZE	REMARKS
DECIDUOUS TREES					
AFJ	ACER x FREEMANI JEFFERSRED	AUTUMN BLAZE MAPLE	6	50mm cal	B&B, Single Stem
CO	CELTIS OCCIDENTALIS	COMMON HACKBERRY	4	50mm cal	B&B, Single Stem
GT	GLEDITSIA TRIACANTHOS SKYLINE	SKYLINE HONEYLOCUST	3	50mm cal	B&B, Single Stem
DECIDUOUS SHRUBS					
AC	AMELANCHIER CANADENSIS	DOWNY SERVICEBERRY	1	150cm ht	B&B, multi-stem
PO	PHYSOCARPUS OPULIFOLIUS	COMMON NINEBARK	33	50cm ht	potted, 100cm o/c
RB	ROSA BLANDA	SHRUB ROSE	23	50cm ht	potted, 100cm o/c
PERENNIALS					
Ach	ACHILLEA millefolium	YARROW	105	15 cm pot	plant 60cm o/c
Ast	ASTER novae-anglia 'Purple Dome'	PURPLE DOME NEW ENGLAND ASTER	60	15 cm pot	plant 60cm o/c
Astb	ASTILBE ardensis 'Montgomery'	DWARF ASTILBE (dark red)	25	15 cm pot	plant 60cm o/c
Ech	ECHINACEA purpurea	PURPLE CONEFLOWER	85	15 cm pot	plant 60cm o/c
Hel	HELIOPSIS heianthoides 'Tuscan Sun'	TUSCAN SUNFLOWER	40	15 cm pot	plant 60cm o/c
Li	LIATRIS cylindracea	ONTARIO BLAZING STAR	105	15 cm pot	plant 60cm o/c
Phlx	PHLOX paniculata	SUMMER PHLOX	30	15 cm pot	plant 60cm o/c
Rud	RUDEBECKIA laciniata	CUTLEAF CONEFLOWER	60	15 cm pot	plant 60cm o/c
Sal	SALVIA x sylvestris 'May Night'	MAY NIGHT SAGE	55	15 cm pot	plant 60cm o/c
Sed	SEDUM spectabilis 'Autumn Joy'	STONECROP	80	15 cm pot	plant 60cm o/c
ORNAMENTAL GRASSES					
Cal	CALAMAGROSTIS canadensis	CANADA BLUE JOINT	30	15cm pot	plant 75cm o/c
Ely	ELYMUS canadensis	CANADA WILD RYE	10	15cm pot	plant 75cm o/c
Sor	SORGHASTRUM nutans	INDIAN GRASS	20	15cm pot	plant 75cm o/c
Spo	SPOROBOLOUS heterolepis	PRAIRIE DROPSEED	30	15cm pot	plant 75cm o/c



LOCATION PLAN

LEGEND / SYMBOL

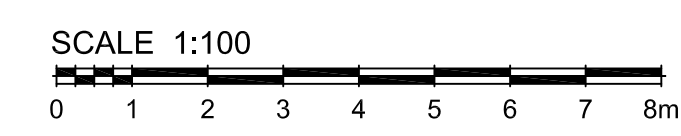
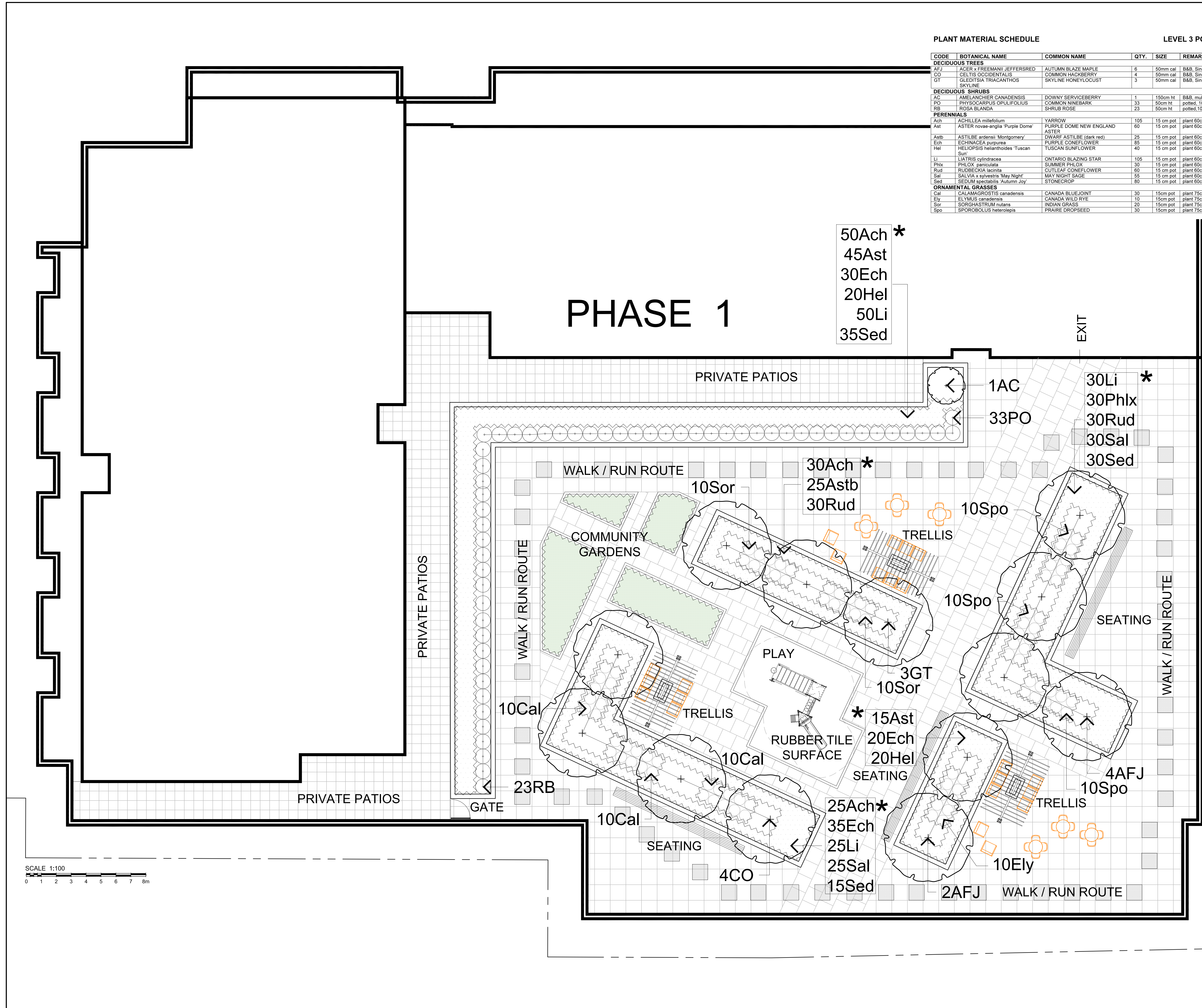
- PROPOSED DECIDUOUS TREE
- PROPOSED DECIDUOUS MULTI-STEM TREE / SHRUB
- PROPOSED SHRUBS
- PROPOSED ORNAMENTAL GRASSES
- PROPOSED PERENNIALS
- PROPOSED UNIT PAVING - TYPE A
- PROPOSED UNIT PAVING - TYPE B
- PROPOSED P.C. CONCRETE SEGMENTAL PLANTER WALL
- PROPOSED GAS FIRE PIT

* PERENNIALS TO BE PLANTED IN RANDOM IN GROUPS OF 5 OF SAME SPECIES THROUGHOUT THE PLANTER AS DESIGNATED.

NOTE:
1. ROOT BARRIER SHALL BE INSTALLED IN CONFORMANCE WITH INTENSIVE GREEN ROOF INVERTED ROOFING ASSEMBLY.

PHASE 1

50Ach *
45Ast
30Ech
20Hel
50Li
35Sed



FOR APPROVAL ONLY

NO.	DATE	REVISION
1.	OCT. 19/23	ISSUE FOR SITE PLAN APPROVAL

Contractor shall check and verify all dimensions on site and report all errors and/or omissions to the Consultant.

Work to be done in accordance with all applicable codes and by-laws.

Do not scale Drawing.

This Drawing shall not be used for construction until signed by the Consultant.

Copyright reserved. This Drawing is the exclusive property of Levstek Consultants Inc. and shall not be used without consent.

Consultant
LEVSTEK CONSULTANT'S
LANDSCAPE ARCHITECTS
5871 Hugh Crescent - Ottawa - Ontario - K0A 2W0
613 - 824 - 9818

Client
SMARTCENTRES
REAL ESTATE INVESTMENT TRUST

Project
SOUTH KEYS REDEVELOPMENT PHASE 1
2200 BANK STREET

Drawing Title
LEVEL 3 AMENITY PODIUM

Drawn: MGB
Scale: 1:100
Project No.: 1194
Drawing No.: L1.02

