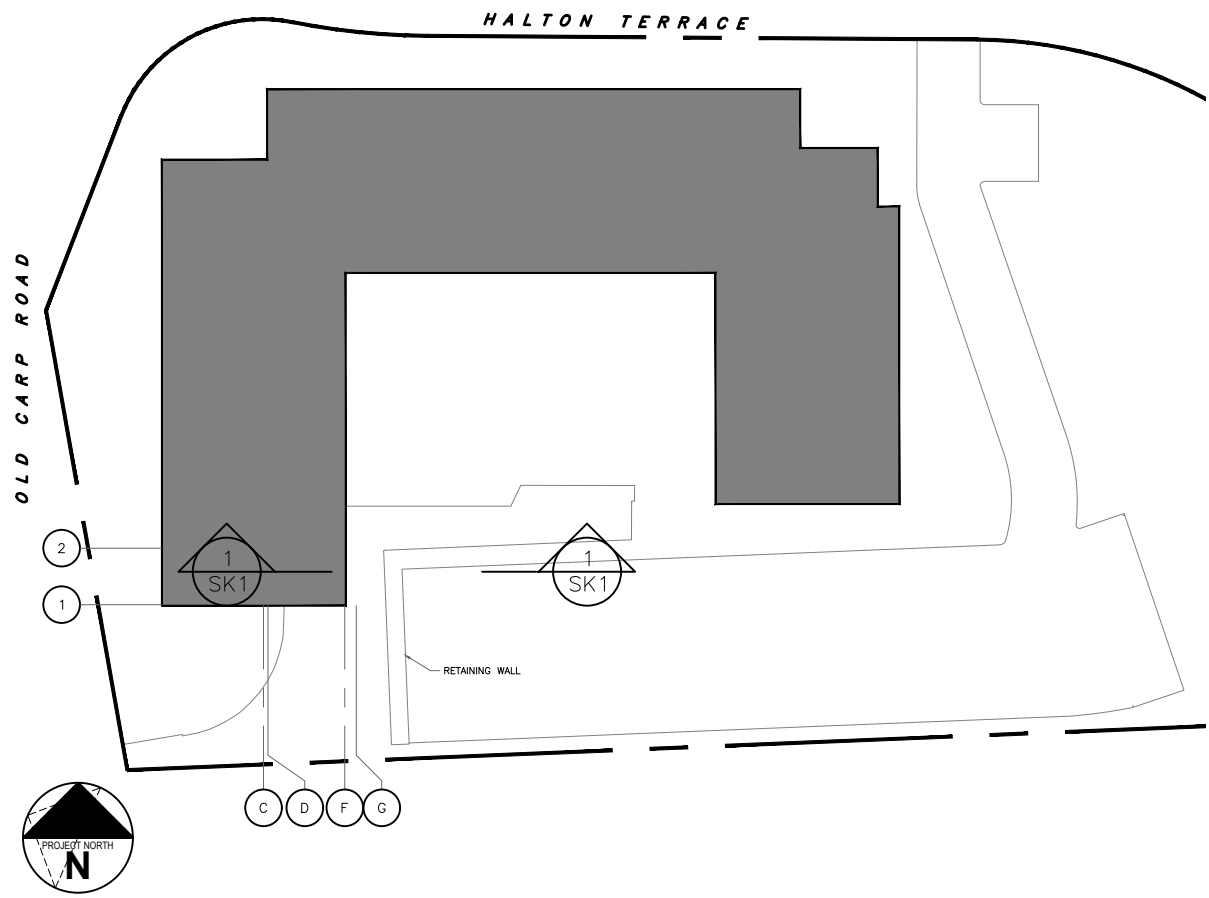
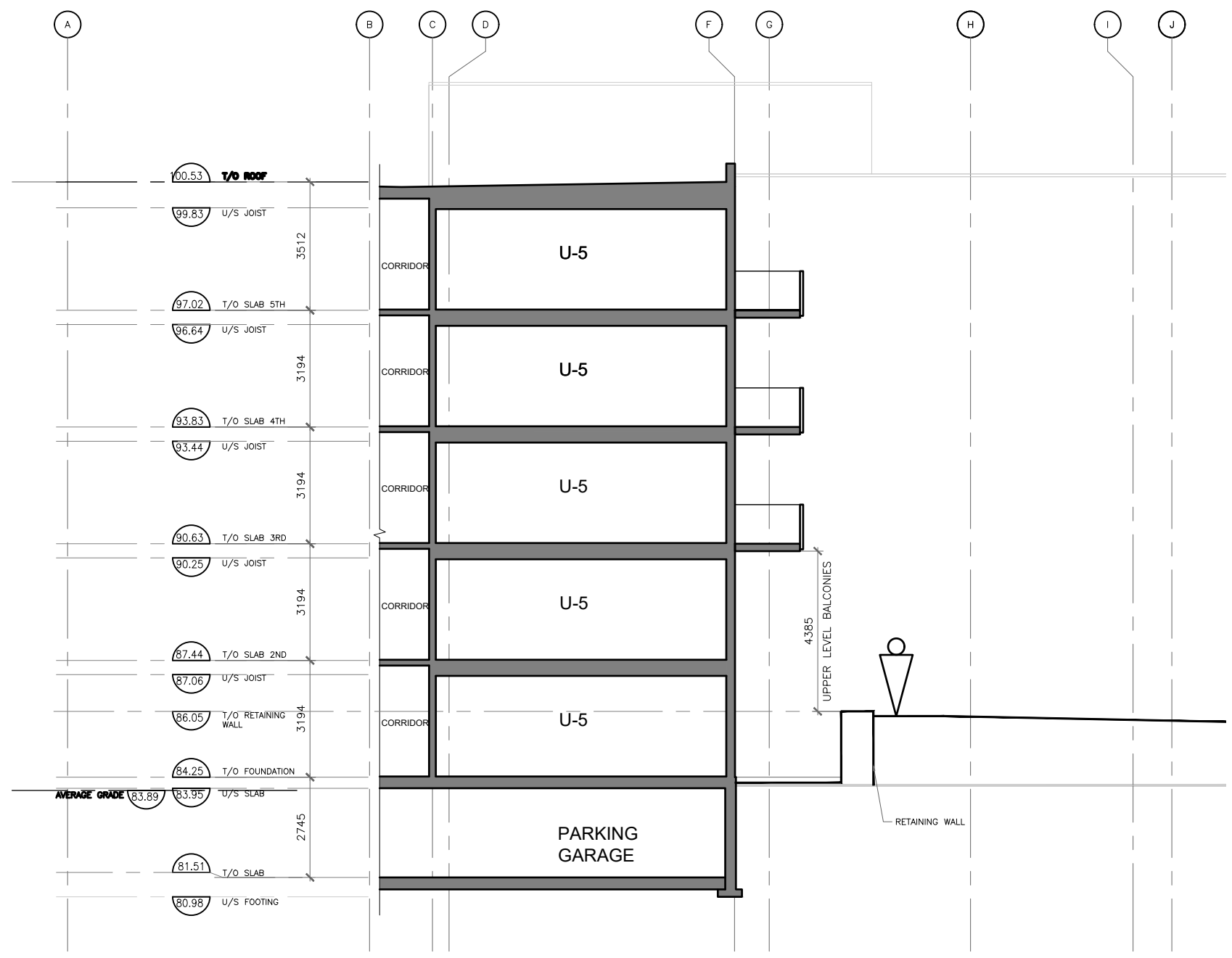


P:\2020\03020_1104-HALTON\2.0 ARCH\2.3 DRAWINGS\2.3.2 SECTIONS\2.31106_HALTON BUILDING SECTIONS_00.dwg - LAYOUT SK1 - FLOT DATE 6-Aug-24 - LAST SAVED BY AD - LAST SAVED DATE August 6, 2024



KEY PLAN
1:750



SECTION @ GRIDLINE F&2
1:150

GENERAL NOTES		
NO	REV DATE	REV DESCRIPTION
1	24/08/06	SUBMISSION FOR OPA

IT IS THE RESPONSIBILITY OF THE CONTRACTOR TO VERIFY ALL DIMENSIONS ON SITE AND REPORT ANY ERRORS AND OMISSIONS TO THE ARCHITECT. ALL CONTRACTORS MUST COMPLY WITH ALL PERTINENT CODES AND BY-LAWS. DO NOT SCALE DRAWINGS. THESE DRAWINGS MAY NOT BE USED FOR CONSTRUCTION UNTIL SIGNED. THIS DRAWING IS THE EXCLUSIVE PROPERTY OF COLIZZA BRUNI ARCHITECTURE INCORPORATED. COPYRIGHT RESERVED.

PROJECT NAME
**1104 HALTON
86 UNIT APARTMENT
BUILDING**

OTTAWA, ON

DRAWING TITLE
**BUILDING
SECTION**

SCALE
AS NOTED

DRAWN BY

DATE
8/1/24

PROJECT NO.
030-20

DRAWING NO.
SK1

COLIZZA BRUNI
architecture

76 CHAMBERLAIN AVE • OTTAWA • ONTARIO • K1S 1V9
T 613.236.2944 • F 613.236.6777 • www.colizzabruni.com