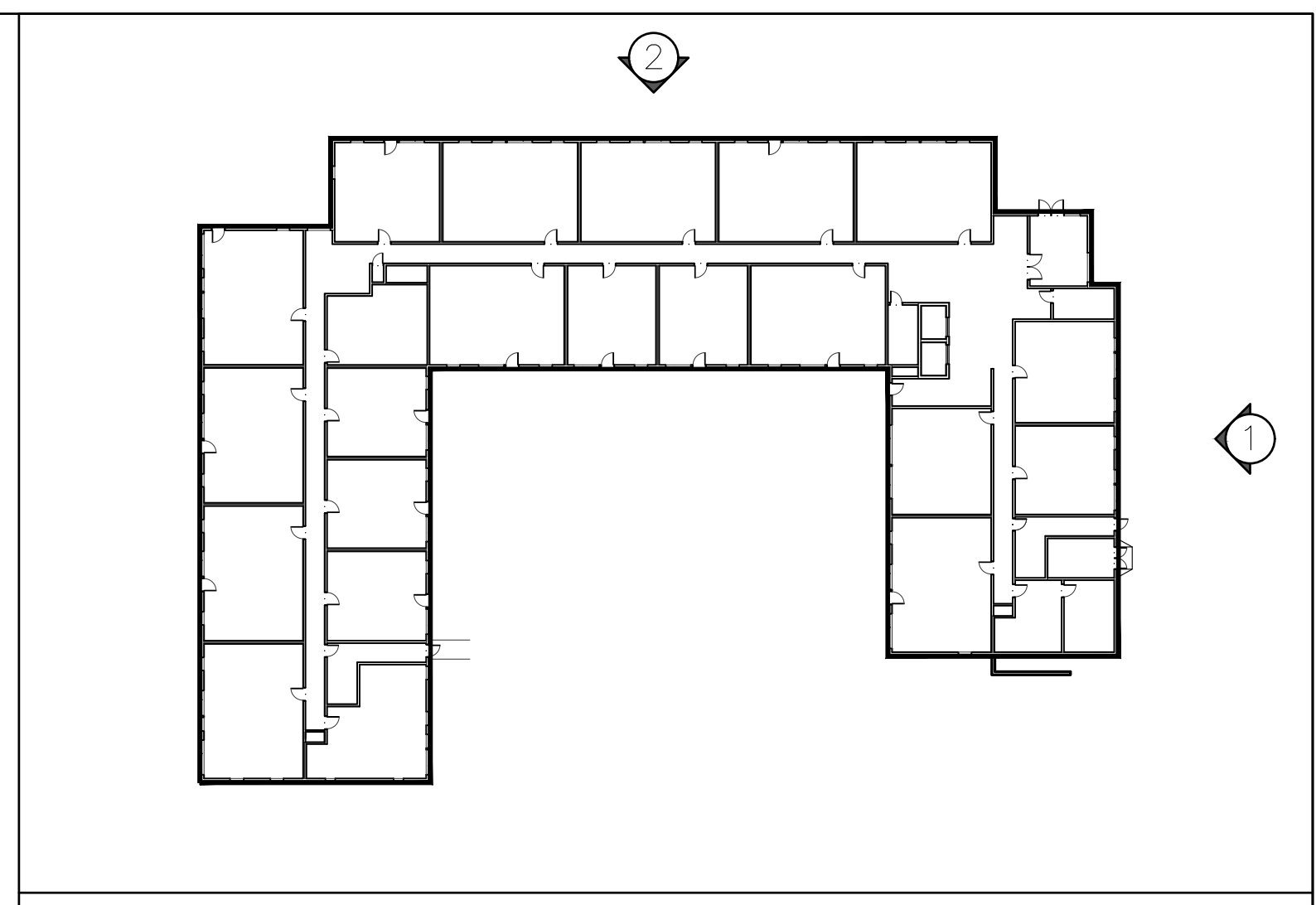




1 EAST BUILDING ELEVATION
1:100



KEY PLAN NOT TO SCALE

MATERIAL LEGEND

- (MS) (MS)^N MS - PRE-FINISHED METAL SIDING. PROFILE, COLOUR & GAUGE TBD.
- (BV) BV - BRICK VENEER. MANUFACTURER, SIZE & COLOUR TBD.
- (CB) CB - CEMENT BOARD. (MANUFACTURER, SIZE, HUE TBD) COLOUR: ORANGE

*ARROW ORIENTATION REFERS TO DIRECTION OF SIDING



2 NORTH BUILDING ELEVATION
1:100

GENERAL NOTES
IT IS THE RESPONSIBILITY OF THE CONTRACTOR TO VERIFY ALL DIMENSIONS ON SITE AND REPORT ANY ERRORS AND OMISSIONS TO THE ARCHITECT. ALL CONTRACTORS MUST COMPLY WITH ALL PERTINENT CODES AND BY-LAWS. DO NOT SCALE DRAWINGS. THESE DRAWINGS MAY NOT BE USED FOR CONSTRUCTION UNTIL SIGNED. THIS DRAWING IS THE EXCLUSIVE PROPERTY OF COLIZZA BRUNI ARCHITECTURE INCORPORATED. COPYRIGHT RESERVED.

NO	REV DATE	REV DESCRIPTION
1	OCT 20, 2021	ISSUED FOR SITE PLAN CONTROL

PROJECT NAME
**1104 HALTON -
86 UNIT APARTMENT
BUILDING**
OTTAWA, ON

DRAWING TITLE
**NORTH
& EAST
ELEVATIONS**

SCALE
AS NOTED
DRAWN BY
JD
DATE
10/20/21
PROJECT NO.
03020

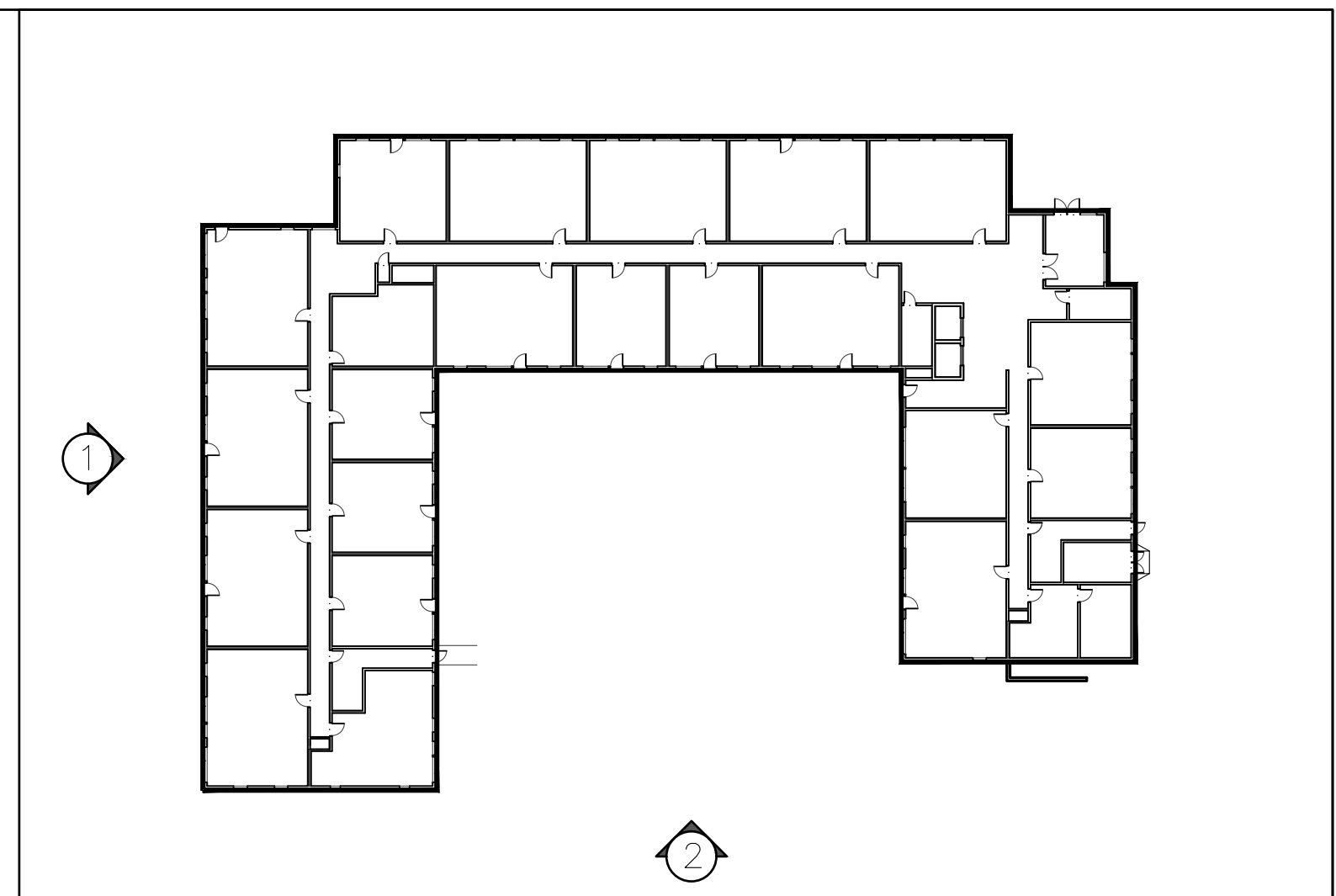
DRAWING NO.
A200

COLIZZA BRUNI
architecture

76 CHAMBERLAIN AVE • OTTAWA • ONTARIO • K1S 1V9
T 613.236.2944 • F 613.236.6777 • www.colizzabruni.com



1 WEST BUILDING ELEVATION
1:100



KEY PLAN NOT TO SCALE

MATERIAL LEGEND

- MS MSⁿ MS - PRE-FINISHED METAL SIDING. PROFILE, COLOUR & GAUGE TBD.
- BV BV - BRICK VENEER. MANUFACTURER, SIZE & COLOUR TBD.
- CB CB - CEMENT BOARD. (MANUFACTURER, SIZE, HUE TBD) COLOUR: ORANGE

*ARROW ORIENTATION REFERS TO DIRECTION OF SIDING



2 SOUTH BUILDING ELEVATION
1:100

GENERAL NOTES

IT IS THE RESPONSIBILITY OF THE CONTRACTOR TO VERIFY ALL DIMENSIONS ON SITE AND REPORT ANY ERRORS AND OMISSIONS TO THE ARCHITECT. ALL CONTRACTORS MUST COMPLY WITH ALL PERTINENT CODES AND BY-LAWS. DO NOT SCALE DRAWINGS. THESE DRAWINGS MAY NOT BE USED FOR CONSTRUCTION UNTIL SIGNED. THIS DRAWING IS THE EXCLUSIVE PROPERTY OF COLIZZA BRUNI ARCHITECTURE INCORPORATED. COPYRIGHT RESERVED.

NO	REV DATE	REV DESCRIPTION
1	OCT 20, 2021	ISSUED FOR SITE PLAN CONTROL

PROJECT NAME
**1104 HALTON -
86 UNIT APARTMENT
BUILDING**
OTTAWA, ON

DRAWING TITLE
**SOUTH
& WEST
ELEVATIONS**

SCALE
AS NOTED
DRAWN BY
JD
DATE
10/20/21
PROJECT NO.
03020

DRAWING NO.
A201

COLIZZA BRUNI
architecture

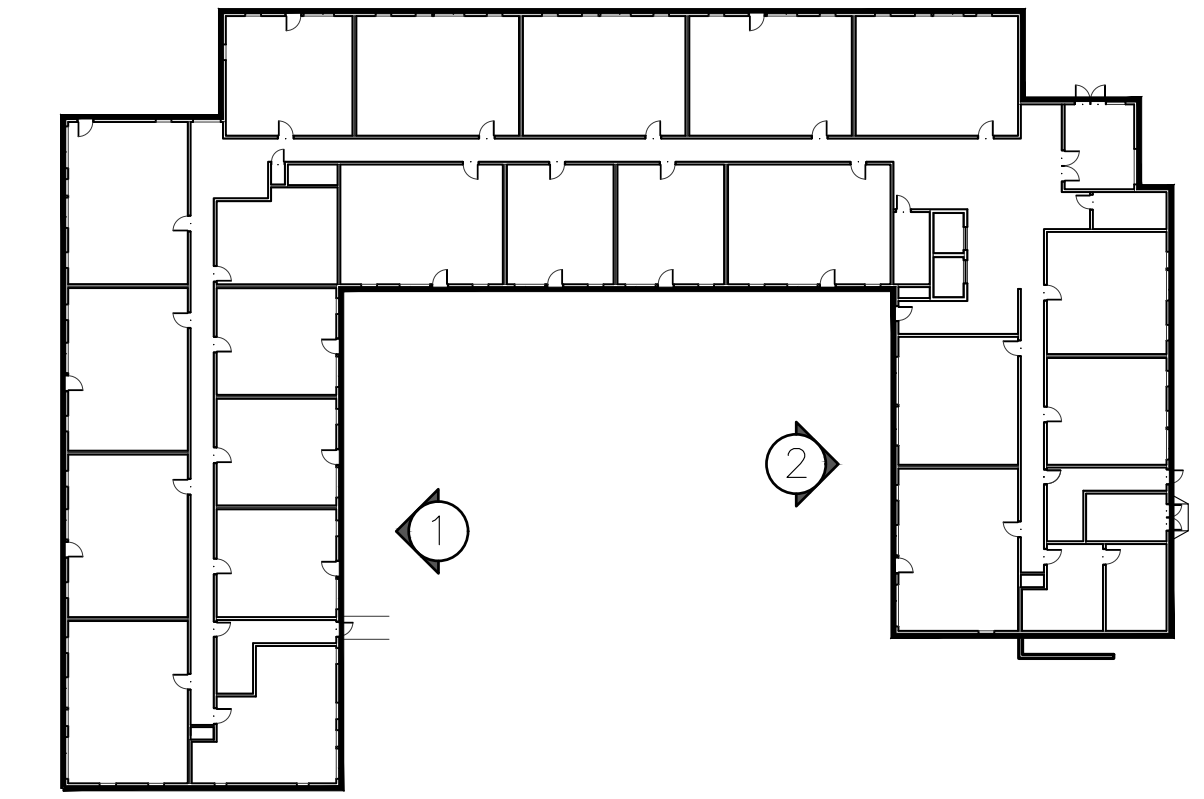
76 CHAMBERLAIN AVE • OTTAWA • ONTARIO • K1S 1V9
T 613.236.2944 • F 613.236.6777 • www.colizzabruni.com



1 WEST COURTYARD ELEVATION
1:100



2 EAST COURTYARD ELEVATION
1:100



KEY PLAN

NOT TO SCALE

MATERIAL LEGEND

- MS - PRE-FINISHED METAL SIDING, PROFILE, COLOUR & GAUGE TBD.
 - BV - BRICK VENEER, MANUFACTURER, SIZE & COLOUR TBD.
 - CB - CEMENT BOARD, (MANUFACTURER, SIZE, HUE TBD) COLOUR: ORANGE
- *ARROW ORIENTATION REFERS TO DIRECTION OF SIDING

GENERAL NOTES
IT IS THE RESPONSIBILITY OF THE CONTRACTOR TO VERIFY ALL DIMENSIONS ON SITE AND REPORT ANY ERRORS AND OMISSIONS TO THE ARCHITECT. ALL CONTRACTORS MUST COMPLY WITH ALL PERTINENT CODES AND BY-LAWS. DO NOT SCALE DRAWINGS. THESE DRAWINGS MAY NOT BE USED FOR CONSTRUCTION UNTIL SIGNED. THIS DRAWING IS THE EXCLUSIVE PROPERTY OF COLIZZA BRUNI ARCHITECTURE INCORPORATED. COPYRIGHT RESERVED.

NO	REV DATE	REV DESCRIPTION
1	OCT 21, 2021	ISSUED FOR SITE PLAN CONTROL

PROJECT NAME
**1104 HALTON -
86 UNIT APARTMENT
BUILDING**
OTTAWA, ON

DRAWING TITLE
**COURTYARD
ELEVATIONS**

SCALE
AS NOTED
DRAWN BY
JD
DATE
10/20/21
PROJECT NO.
03020

DRAWING NO.

A202

COLIZZA BRUNI
architecture

76 CHAMBERLAIN AVE • OTTAWA • ONTARIO • K1S 1V9
T 613.236.2944 • F 613.236.6777 • www.colizzabruni.com