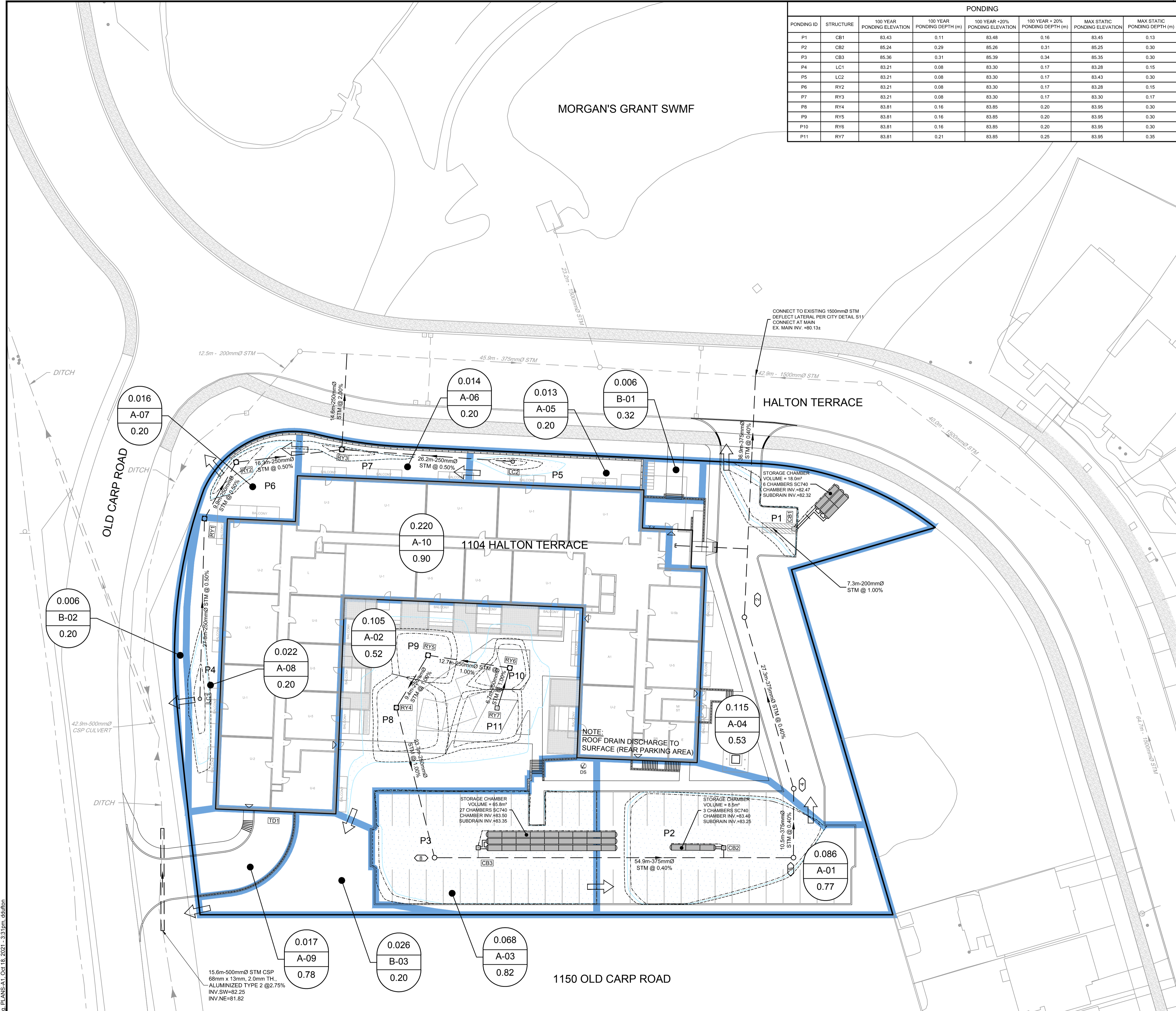
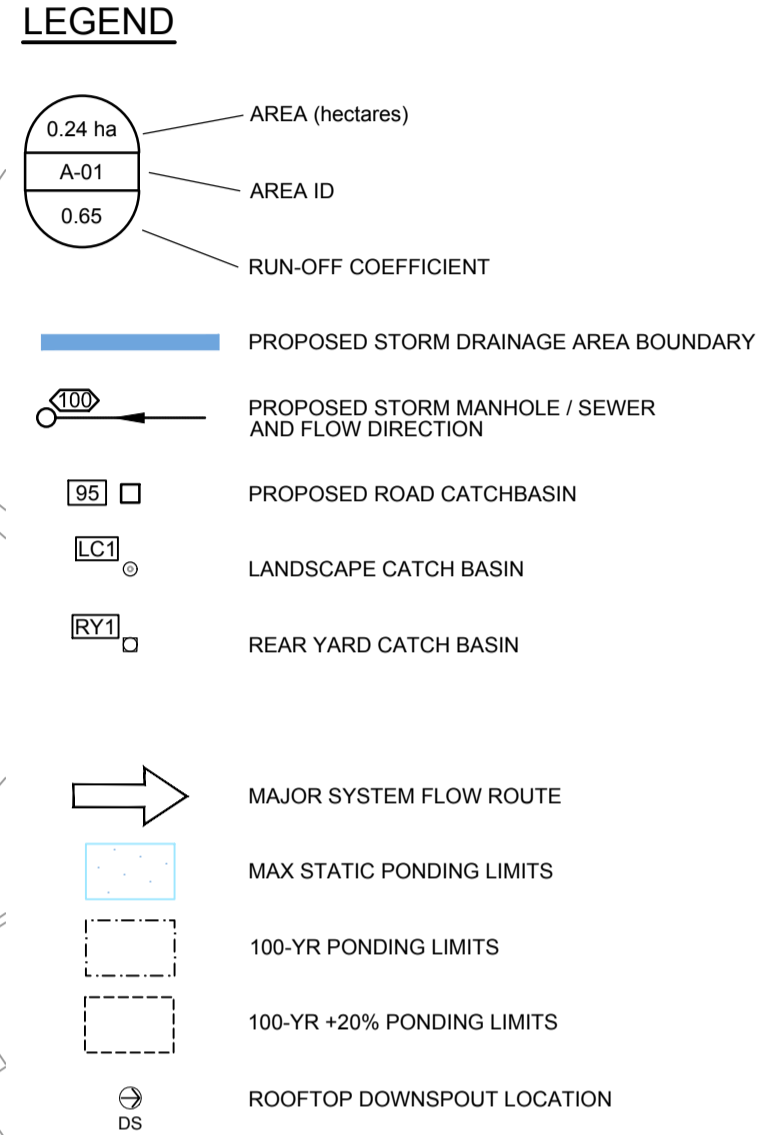
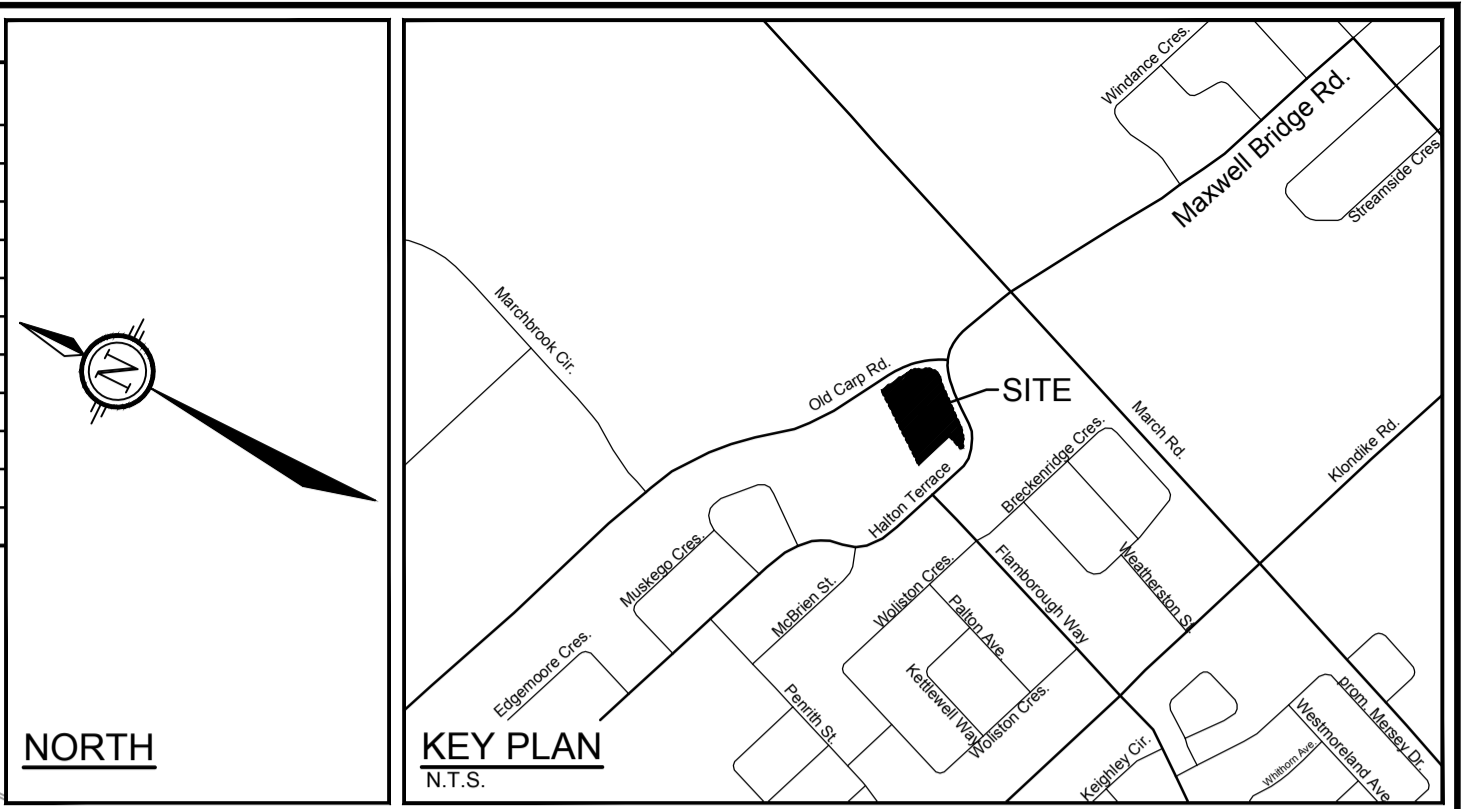
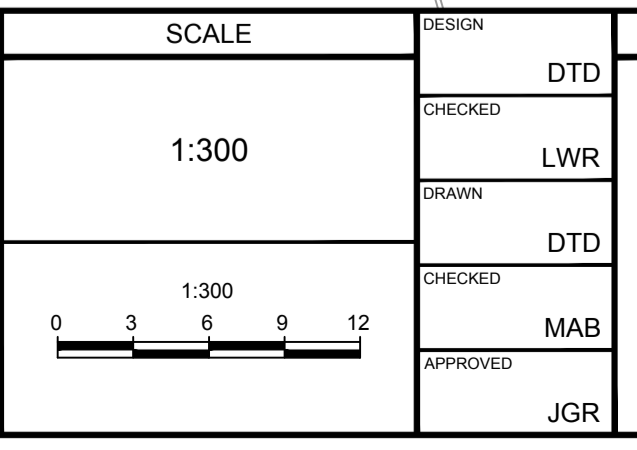


PONDING							
PONDING ID	STRUCTURE	100 YEAR PONDING ELEVATION	100 YEAR PONDING DEPTH (m)	100 YEAR +20% PONDING ELEVATION	100 YEAR +20% PONDING DEPTH (m)	MAX STATIC PONDING ELEVATION	MAX STATIC PONDING DEPTH (m)
P1	CB1	83.43	0.11	83.48	0.16	83.45	0.13
P2	CB2	85.24	0.29	85.26	0.31	85.25	0.30
P3	CB3	85.36	0.31	85.39	0.34	85.35	0.30
P4	LC1	83.21	0.08	83.30	0.17	83.28	0.15
P5	LC2	83.21	0.08	83.30	0.17	83.43	0.30
P6	RY2	83.21	0.08	83.30	0.17	83.28	0.15
P7	RY3	83.21	0.08	83.30	0.17	83.30	0.17
P8	RY4	83.81	0.16	83.85	0.20	83.95	0.30
P9	RY5	83.81	0.16	83.85	0.20	83.95	0.30
P10	RY6	83.81	0.16	83.85	0.20	83.95	0.30
P11	RY7	83.81	0.21	83.85	0.25	83.95	0.35



**NOTE:**  
 THE POSITION OF ALL POLE LINES, CONDUITS, WATERMANS, SEWERS AND OTHER UNDERGROUND AND OVERGROUND UTILITIES AND STRUCTURES IS NOT NECESSARILY SHOWN ON THE CONTRACT DRAWINGS, AND WHERE SHOWN, THE ACCURACY OF THE POSITION OF SUCH UTILITIES AND STRUCTURES IS NOT GUARANTEED. BEFORE STARTING WORK, DETERMINE THE EXACT LOCATION OF ALL SUCH UTILITIES AND STRUCTURES AND ASSUME ALL LIABILITY FOR DAMAGE TO THEM.

No.	REVISION	DATE	BY
1.	CITY SUBMISSION	OCT 19/21	MAB



**FOR REVIEW ONLY**

DESIGN: DTD  
 CHECKED: LWR  
 DRAWN: DTD  
 CHECKED: MAB  
 APPROVED: JGR

LICENSED PROFESSIONAL ENGINEER  
 L.R. WILSON  
 100160065  
 PROVINCE OF ONTARIO

LICENSED PROFESSIONAL ENGINEER  
 M.A. BISSETT  
 2021.10.19  
 PROVINCE OF ONTARIO

**NOVATECH**  
 Engineers, Planners & Landscape Architects  
 Suite 200, 240 Michael Cowpland Drive  
 Ottawa, Ontario, Canada K2M 1P6  
 Telephone: (613) 254-9643  
 Facsimile: (613) 254-5867  
 Website: www.novatech-eng.com

CITY OF OTTAWA  
 1104 HALTON TERRACE

**STORM DRAINAGE AREA PLAN**

PROJECT No: 119024  
 REV: REV #1  
 DRAWING No: 119024-STM

M:\2021\119024\CAD\Design\119024-STM.dwg, PLANS-A1, Oct 18, 2021, 3:33 pm, addition