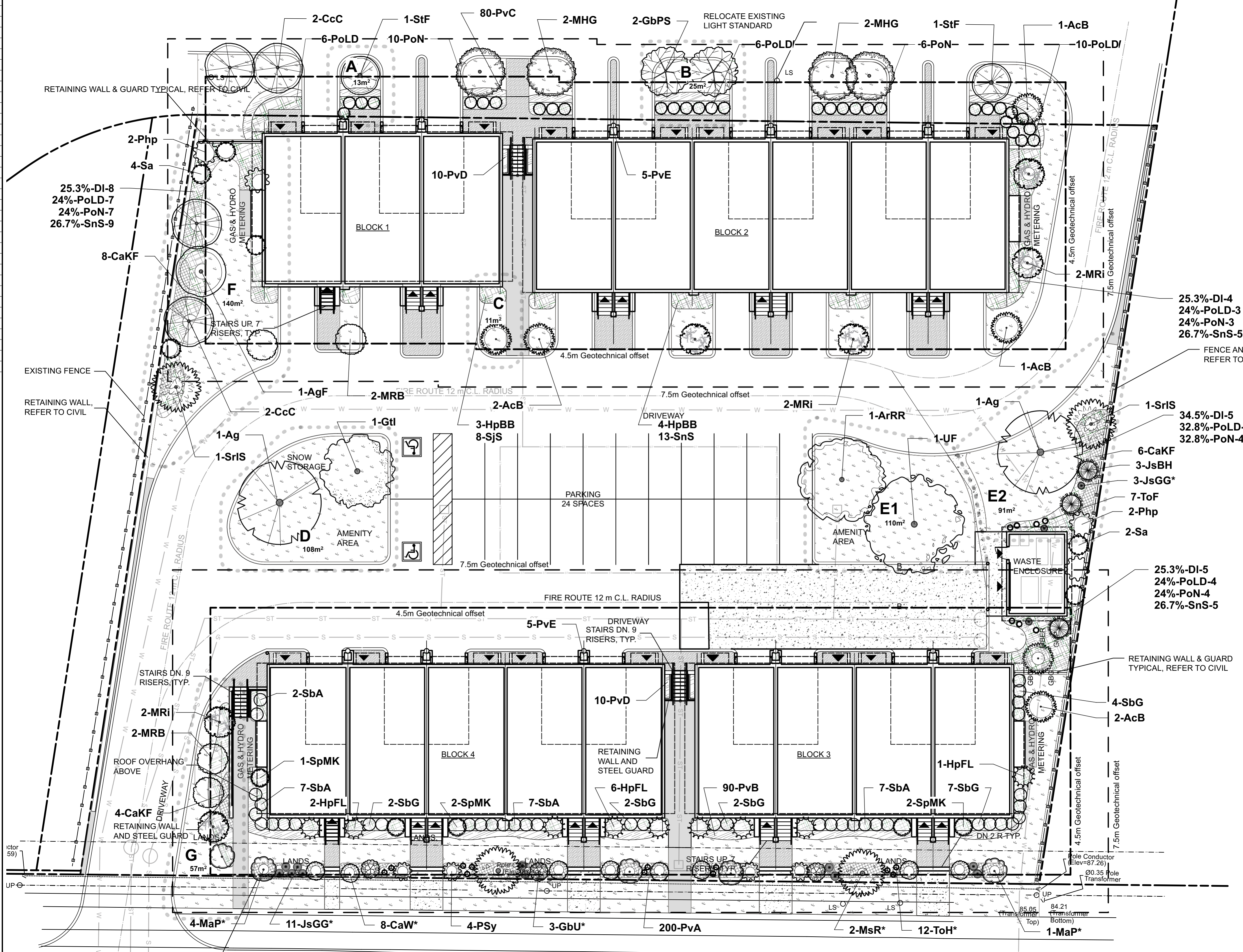


Z E I G L E R



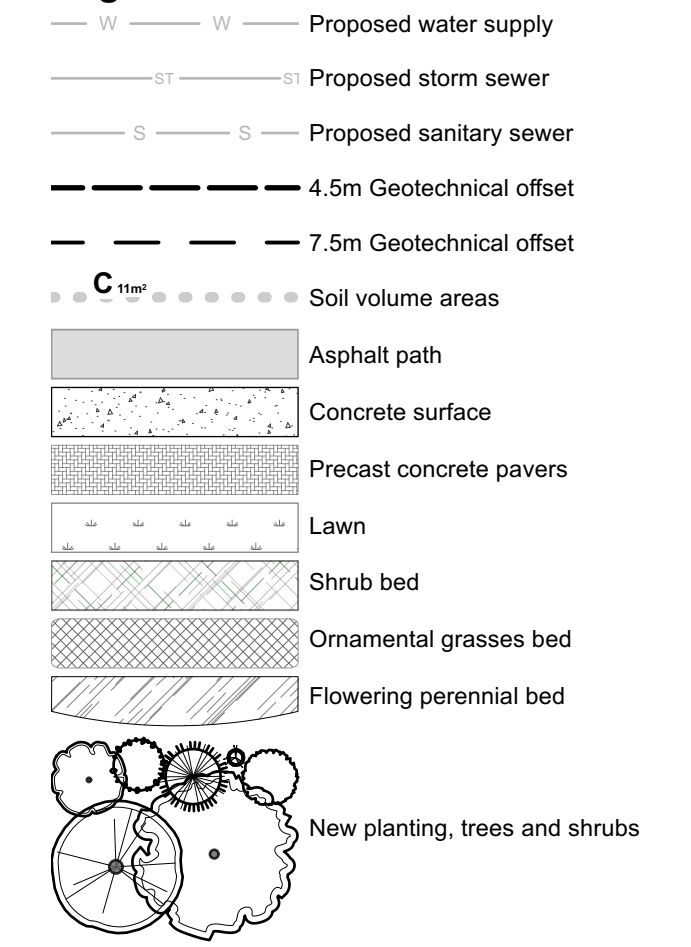
CENTERLINE OF CONDUCTOR CLOSEST TO NORTH SIDE BASED ON SURVEYOR'S INPUT. HYDRO OTTAWA TO CONFIRM IN WRITING THAT ALL SETBACKS MEET HYDRO REQUIREMENTS.

R E N A U D

Soil Volume Area, Tree Quantity and Size	Tree Quantity	OTTAWA Target Soil Volume (m ³)	Design Soil Volume	Soil Adequacy percentage
AREA A - 1 ornamental tree (typical) plant bed (13 sq m x 0.9 ave metre deep)	1	13.2	11.7	88.64%
AREA B - 2 ornamental trees (typical) plant bed (25 sq m x 0.6 ave metre deep)	2	9.2	15.0	162.34%
AREA C - 1 ornamental tree (typical) plant bed (11 sq m x 0.9 ave metre deep)	1	8.0	9.9	123.75%
AREA D - 2 medium trees plant bed (108 sq m x 0.4 ave metre deep)	2	30.0	43.2	144.00%
AREA E1 - 2 medium trees plant bed (110 sq m x 0.4 ave metre deep)	2	30.0	44.0	146.67%
AREA E2 - 1 medium tree, 1 small tree, 8 columnar junipers/cedars plant bed (91 sq m x 0.4 ave metre deep)	10	32.4	36.4	112.35%
AREA F - 4 ornamental trees, 1 small ornamental tree*, 6 large shrubs* plant bed (140 sq m x 0.4 ave metre deep)	11	50.0	56.0	112.00%
AREA G - 3 ornamental trees, 2 small ornamental 8cm DBH* plant bed (57 sq m x 0.6 ave metre deep)	5	34.0	34.2	100.59%

* Small ornamental trees with growth to 8-15cm DBH, large shrubs, and columnar conifers calculated using 'How much soil to grow a big tree' by DeepRoot as a guide

Legend



NOTE:
THIS PLAN IS ISSUED FOR SITE PLAN CONTROL SUBMISSION ONLY. ADDITIONAL DETAILING AND SPECIFICATIONS ARE REQUIRED PRIOR TO CONSTRUCTION OR CONSTRUCTION.
SERVICING INFORMATION SHOWN AS REFERENCE ONLY. REFER TO CIVIL DRAWINGS.

CLIENT / OWNER :
LANDRIC HOMES
63 CHEMIN DE MONTREAL EST
GATINEAU, QC J8M 1K3
819-663-0003

Kristopher D. Benez, OAA, MRAIC, LEED AP
OPA open plan architects inc.
architecture | interiors | concepts
2305 HILLARY AVE. | OTTAWA | ON | K1H 7J2
613.883.5090 | info@openplan.ca

NUMBER	MILESTONE / FAIT SAILLANT	DATE	(Y/M/D)	INITIALS
6				
5				
4				
3				
2				
1	Issued for SPC Coordination	2021/12/22		

Ruhland & Associates Ltd
landscape architecture • urban design • site planning
Ph 613-224-0744 Fax 613-224-1331 info@rala.ca www.rala.ca

ID	Qty	Botanical Name	Common Name	Scheduled Size	Remarks
MEDIUM TREES: 7.5 - 14m ht					
ArRR	1	Acer rubrum 'Red Rocket'	Red Rocket Red Maple	70mm caliper	WB, Staked
Ag	2	Aesculus glabra	Ohio Buckeye	50mm dia.	WB, Staked
Gtl	1	Gleditsia triacanthos var. inermis 'Impcole'	Imperial Honeylocust	70mm cal.	B&B / WB
UF	1	Ulmus minor x parvifolia 'Frontier'	Frontier Elm	60mm caliper	WB, Staked
SMALL TREES: 4.5 - 7.0m ht					
AgF	1	Acer ginnala 'Flame'	Flame Amur Maple	45mm caliper	WB, Staked
CcC	4	Crataegus crus-galli 'Cruzam'	Crusader Cockspur Hawthorn	45mm caliper	WB, Staked
GbPS	2	Ginkgo biloba 'Princeton Sentry'	Princeton Sentry Maidenhair Tree	60mm caliper	WB, Staked
MHG	4	Malus x 'Harvest Gold'	Harvest Gold Crabapple	50mm dia.	WB, Staked
StF	2	Sorbus thuringiaca 'Fastigiata'	Pyramidal Mountain Ash	45 mm caliper	WB, Staked
SrIS	2	Syringa reticulata 'Ivory Silk'	Ivory Silk Tree Lilac	50mm caliper	WB, Staked
SMALL ORNAMENTAL TREES: 4.5m ht max (3.5m max under hydro lines)					
AcB	6	Amelanchier canadensis 'Ballerina'	Ballerina Serviceberry (tree form)	50mm caliper	WB, Staked
CaW*	8	Caragana arborescens 'Walker'	Walker's Weeping Peashrub	125cm STEM	WB, specimen
Gbu*	3	Ginkgo biloba 'Umbrella'	Umbrella Maidenhair Tree	70mm cal.	B&B / WB, single
JsBH	3	Juniperus scopulorum 'Blue Haven'	Blue Haven Juniper	150 cm	Potted
JsGG*	14	Juniperus scopulorum 'Grey Gleam'	Grey Gleam Juniper	125cm ht	specimen
MaP*	5	Morus alba 'Pendula'	Weeping Mulberry, male	150cm stem	Fruitless, B&B
MRB	4	Malus x 'Royal Beauty'	Royal Beauty Crabapple	50mm dia.	WB, Staked
MRi	6	Malus 'Rink'	Rink Crabapple	45mm dia.	WB, Staked
MsR*	2	Malus sargentii 'Rosea'	Pink Flowering Crabapple	45mm caliper	Wire Basket, Ste
ToF	7	Thuja occidentalis 'Fastigiata'	Pyramid Cedar	175cm ht	specimen or 0.7
ToH*	12	Thuja occidentalis 'Holmstrup'	Holmstrup Cedar	125cm ht	specimen or 0.5
SHRUBS					
DI	22	Diervilla lonicera	Dwarf Bush Honeysuckle	50 cm ht.	Potted
HpBB	7	Hydrangea paniculata 'Bobo'	Bobo pannicle hydrangea	2 gallon pot	0.9m o.c.
HpFL	9	Hydrangea paniculata 'Fire Light'	Fire Light pannicle hydrangea	2 gallon pot	0.9m o.c.
Php	4	Philadelphus pubescens	Hairy Mockorange	60mm dia.	WB, Staked
PoLD	40	Physocarpus opulifolius 'Little Devil'	Little Devil Ninebark	50cm ht.	Potted
PoN	34	Physocarpus opulifolius 'Nanus'	Dwarf Ninebark	50cm ht.	Potted
PoTW	16	Physocarpus opulifolius 'Tiny Wine'	Tiny Wine Dwarf Ninebark	50cm ht.	Potted
PSy	4	Philadelphus 'Sybille'	Minnesota Snowflake Mockorange	60mm dia.	WB, Staked
Sa	6	Symphoricarpos albus	Common Snowberry	100 cm ht.	Potted
SbA	23	Spiraea bumalda 'Anthony Waterer'	Anthony Waterer Spirea	50cm ht.	Potted, 0.9m o.c.
SbG	17	Spiraea bumalda 'Goldflame'	Goldflame Spirea	50cm ht.	spacing 0.8m o.c.
SJS	8	Spiraea japonica 'Shirobana'	Shirobana Spirea	50cm ht.	spacing 0.8m o.c.
SnS	32	Spiraea nipponica 'Snowmound'	Snowmound Spirea	50cm ht.	spacing 0.8m o.c.
SpmK	5	Syringa patula 'Miss Kim'	Miss Kim Dwarf Lilac	100cm ht.	3 gallon Pot
PERENNIALS					
CaKF	18	Calamagrostis x acutiflora 'Karl Foerster'	Karl Foerster Feather Reed Grass	1 gal. pot	90cm o.c.
PvA	200	Ornamental grasses		150mm pot	40-60cm o.c.
PvB	90	Flowering perennials for sun		150mm pot	60cm o.c.
PvC	80	Flowering perennials for shade		150mm pot	60cm o.c.
PvD	20	Perennials for shade		150mm pot	60cm o.c.
PvE	80	Specimen perennials - 40-60cm ht		150mm pot	

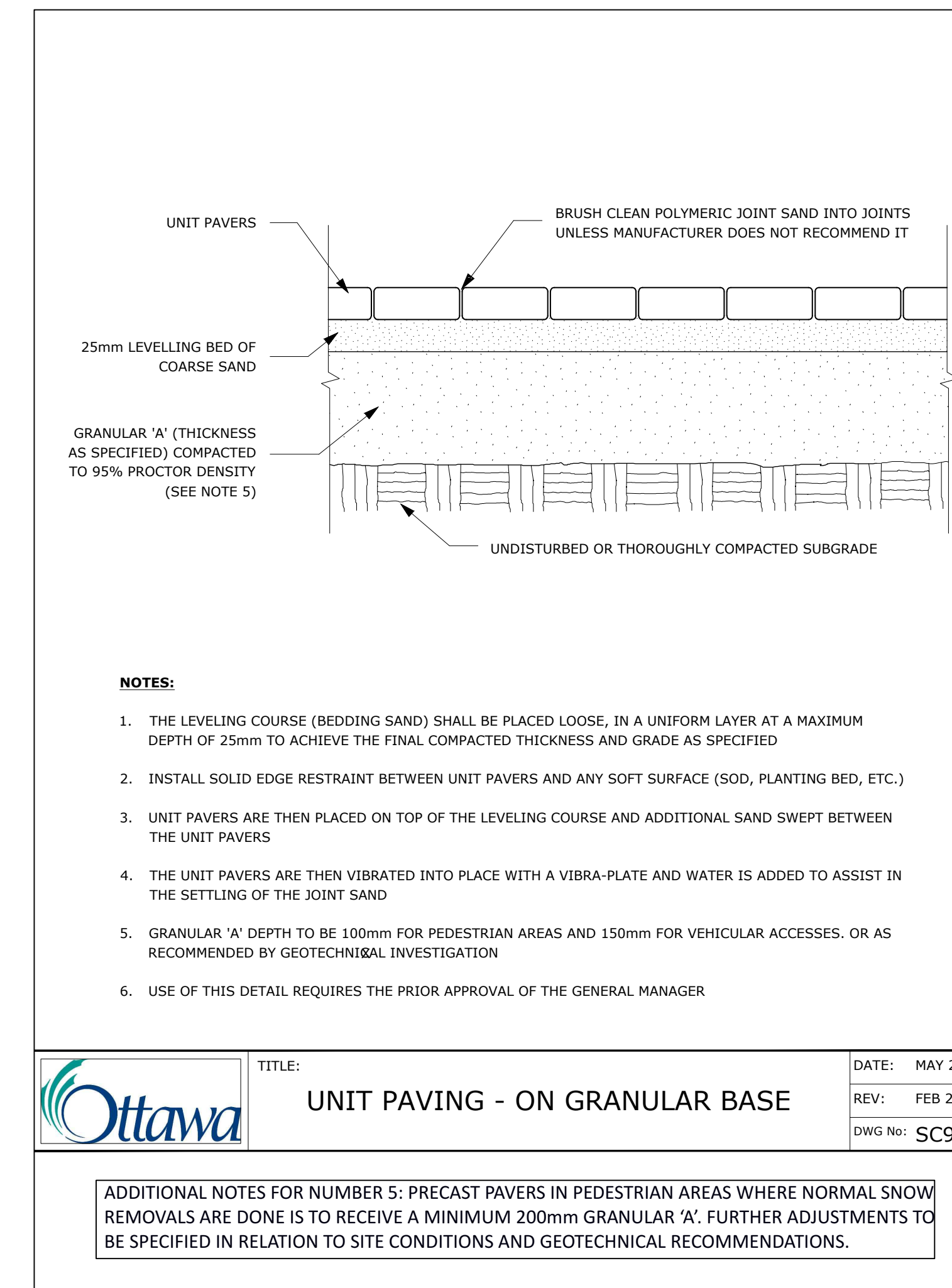
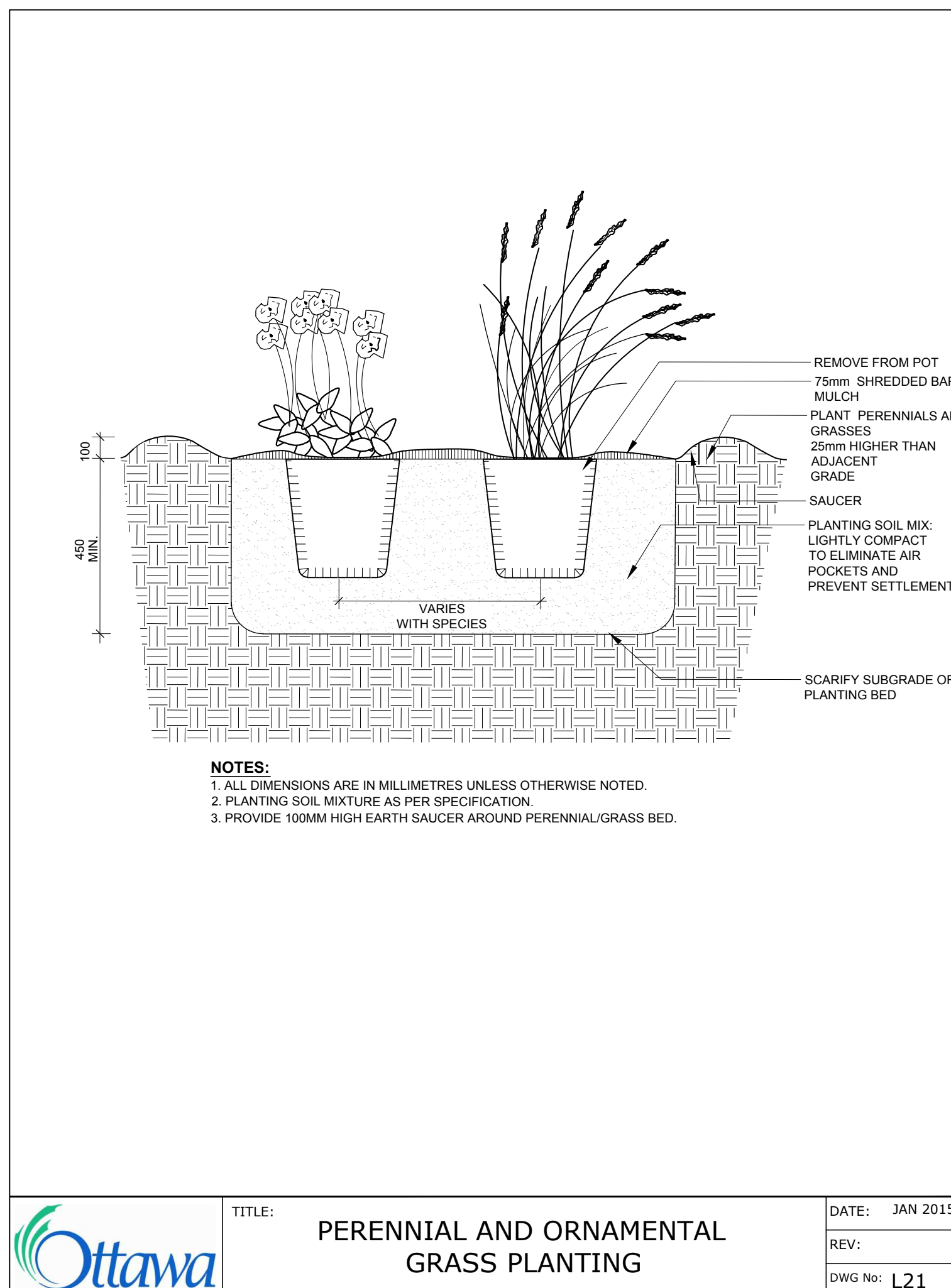
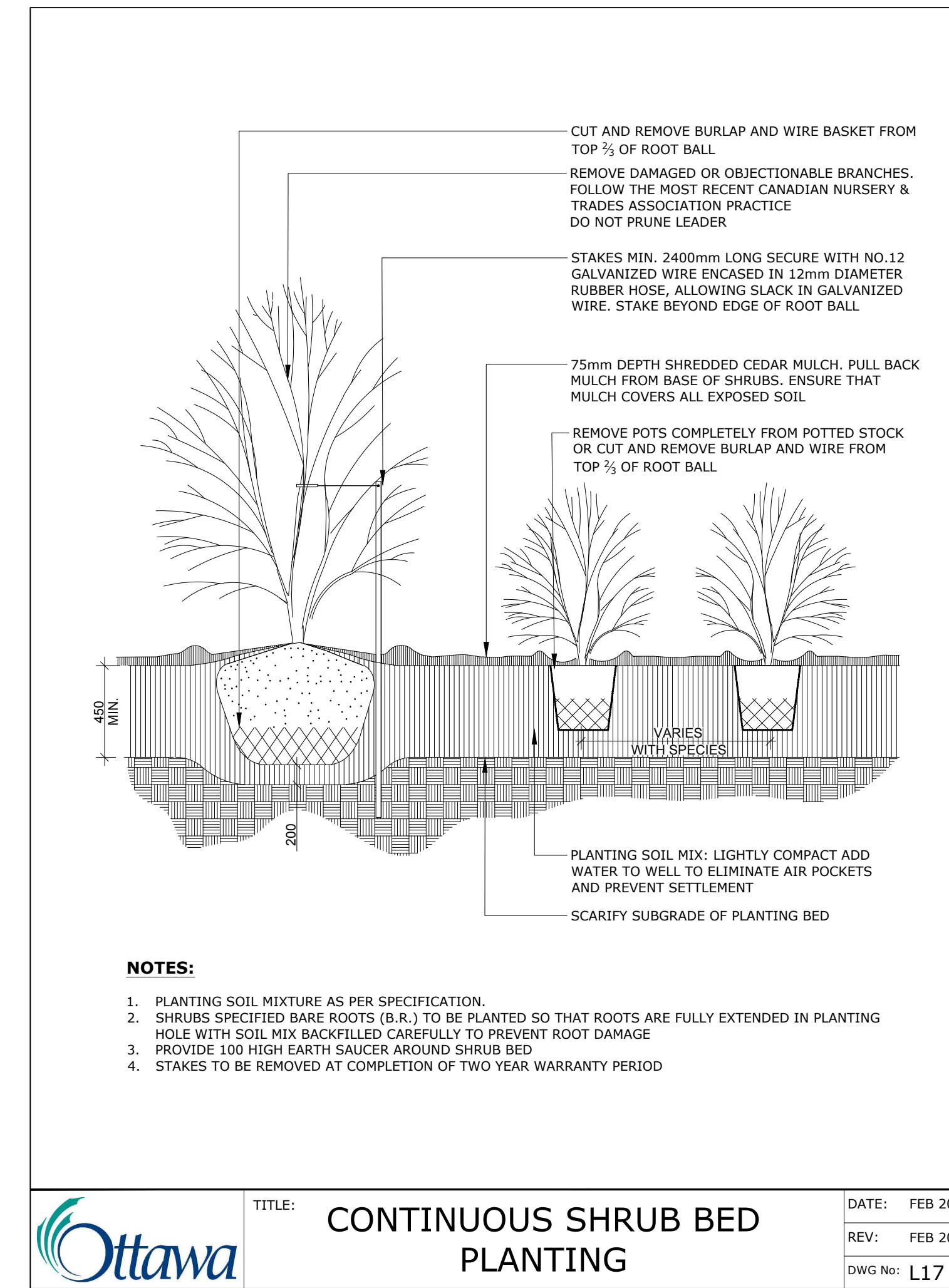
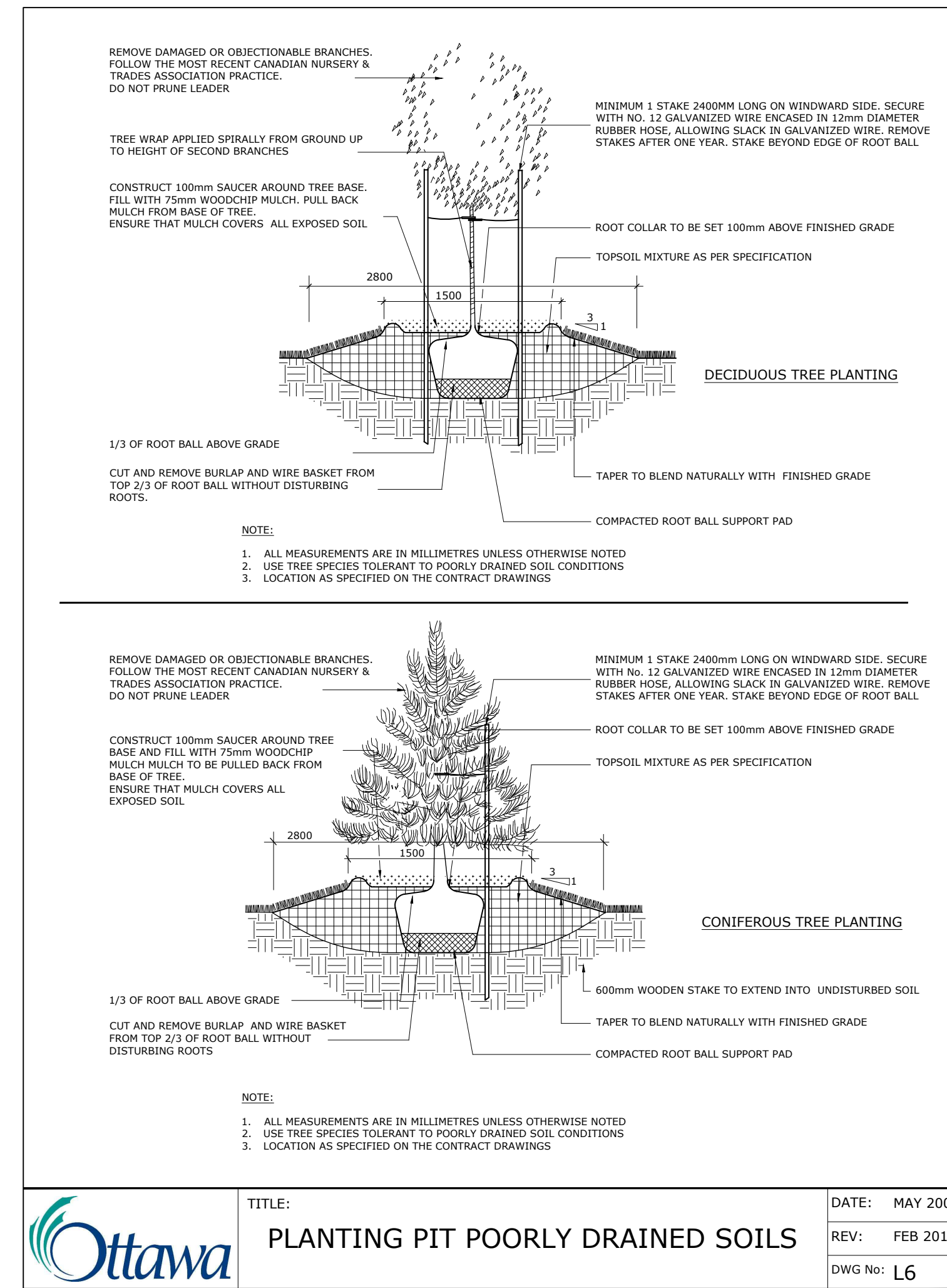
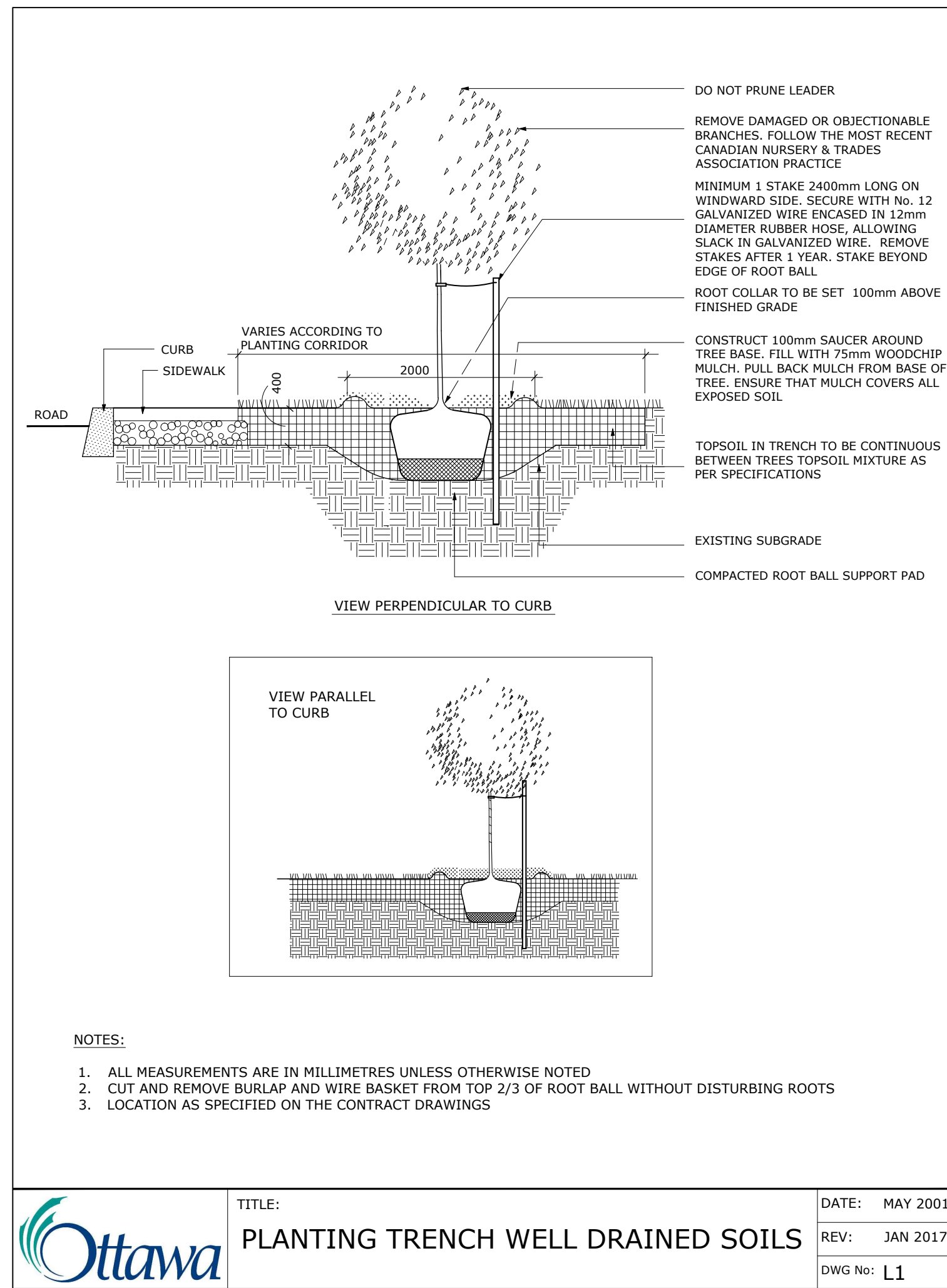
Perennial types: (invasives such as miscanthus or purple loosestrife are not to be planted)
PvA: Ornamental grasses (Minimum 2 species mix, most < 30cm ht); Heavy Metal switch grass (taller accent), Blue Fescue
PvB: Flowering perennials for shade, minimum 5 species: Blue Chips Bellflower, Iris sp (Blues, pinks), Daylily sp. (yellows), Coral Bells sp (burgundies), Hosta sp (Blue / white leaf), Cranesbill Geranium
PvC: Flowering perennials for sun, minimum 5 species: Shasta Daisy vars, Daylily sp (red, yellows), Coneflower vars Prairie smoke, Spiked gayfeather, Black-eyed Susan sp., Sea Thrift
PvD: Shade perennials: Bottlebrush Grass and Ostrich Fern
PvE: Specimen shade perennials - 40-60cm ht: Hosta 'Patriot', Hosta 'Color Festival', Lady Fern

ARCHITECT CONSULTANT
CONSULTANT CONSULTANT
PROJECT / LOCATION
LANDRIC HOMES STACKED TOWN HOMES
6001 - 6005 RENAUD ROAD
OTTAWA, ONTARIO

DRAWING
PLANTING PLAN

SHEET NO.
PROJECT NO.
21-1660
L-01

NOTE:
 THIS PLAN IS ISSUED FOR SITE PLAN CONTROL SUBMISSION ONLY. ADDITIONAL DETAILING AND SPECIFICATIONS ARE REQUIRED PRIOR TO TENDERING OR CONSTRUCTION.
 SERVICING INFORMATION SHOWN AS REFERENCE ONLY. REFER TO CIVIL DRAWINGS.



CLIENT / OWNER :
 LANDRIC HOMES
 63 CHEMIN DE MONTREAL EST
 GATINEAU, QC J8M 1K3
 819-663-0003

Kristopher D. Benes, OAA, MRAIC, LEED AP
OPA open plan architects inc.
 architecture | interiors | concepts
 2305 HILLARY AVE. | OTTAWA | ON | K1H 7J2
 613.883.5090 | info@openplan.ca

6			
5			
4			
3			
2			
1	Issued for SPC Coordination	2021/12/22	
NUMBER	MILESTONE / FAIT SALLANT	DATE	INITIALS
DESIGNED BY / CONCU PAR		CHECKED BY / VERIFIE PAR	
M. Ruhland		M. Ruhland	
DRAWN BY / DESINE PAR		SCALE: ECHELLE	
T. Frost			

Ruhland & Associates Ltd
 landscape architecture • urban design • site planning
 Ph 613-224-0744 Fx 613-224-1311 info@rala.ca www.rala.ca

ARCHITECT	CONSULTANT
CONSULTANT	CONSULTANT

PROJECT / LOCATION
 LANDRIC HOMES
 STACKED TOWN HOMES
 6001 - 6005 RENAUD ROAD
 OTTAWA, ONTARIO

DRAWING
DETAILS

SHEET NO.
L-02
PROJECT NO.
 21-1660