

# UNITED PROPERTY RESOURCE CORPORATION

## QUEENSWOOD UNITED CHURCH\_ Re-Issued for ZBA/SPA\_2022-08-31

NOT FOR CONSTRUCTION

Site Address  
360 Kennedy Lane East  
Ottawa, ON K1E 3P3



Landscape Architecture and Urban Design  
t 416 656 6665 f 416 656 5756 www.jrstudio.ca  
148 Kenwood Avenue, Toronto Ontario M6C 2S3 Canada

### DRAWING LIST

L001 TREE PRESERVATION PLAN  
L002 COMPOSITE UTILITY LANDSCAPE PLAN  
L100 LANDSCAPE LAYOUT PLAN  
L200 GRADING PLAN  
L300 PLANTING PLAN  
L400 LANDSCAPE SECTIONS  
L500 LANDSCAPE DETAILS  
L501 LANDSCAPE DETAILS

#### ARBORIST

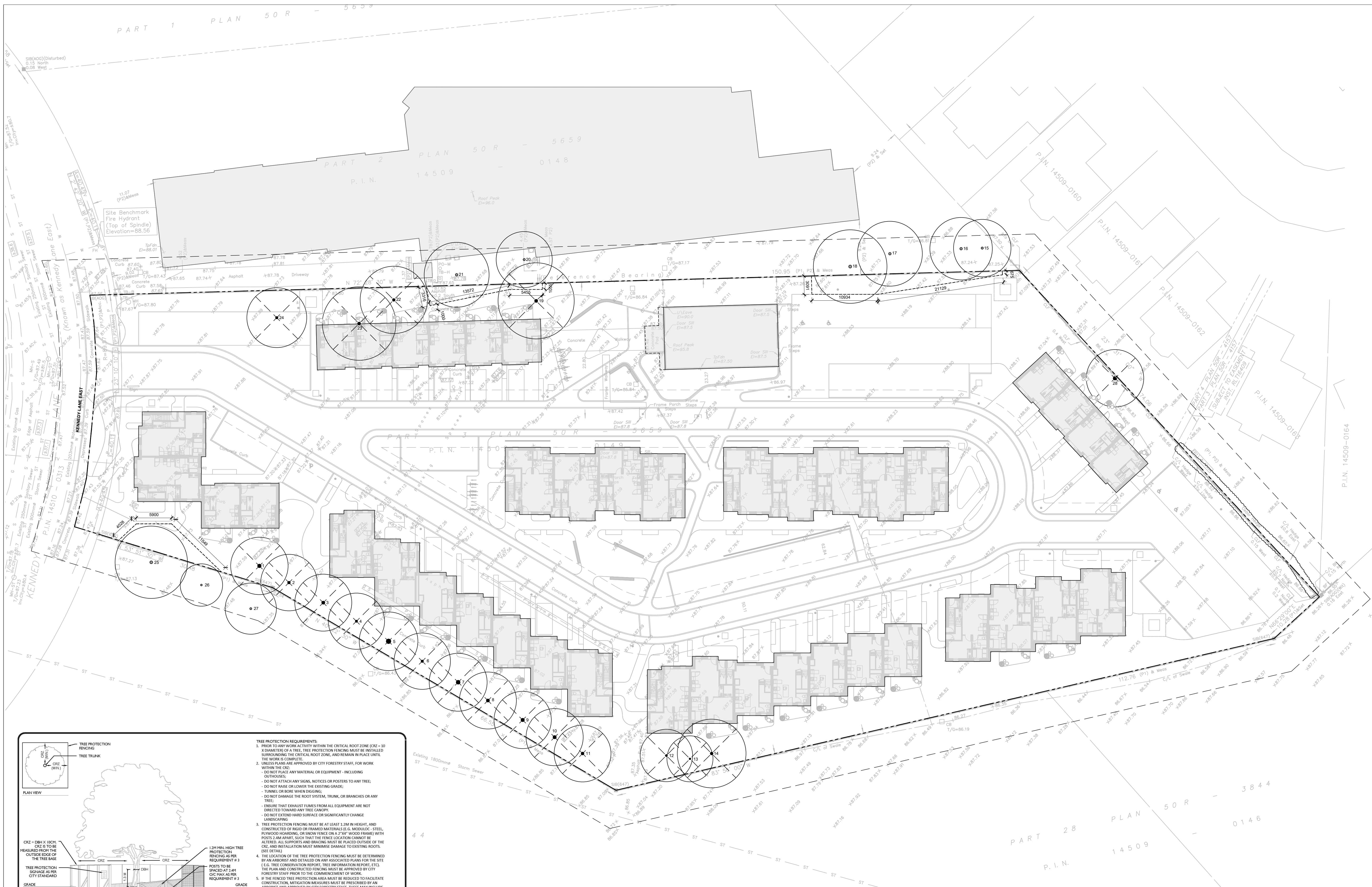
Arboris  
910 Route 400 E.  
Casselman, ON  
K0A 1M0  
T: 613 298 3905

#### ARCHITECT

KPMB Architects  
315 King Street E. Suite 1200  
Toronto, Ontario  
M5A 0L6  
T: 416 977 5104

#### CIVIL CONSULTANT

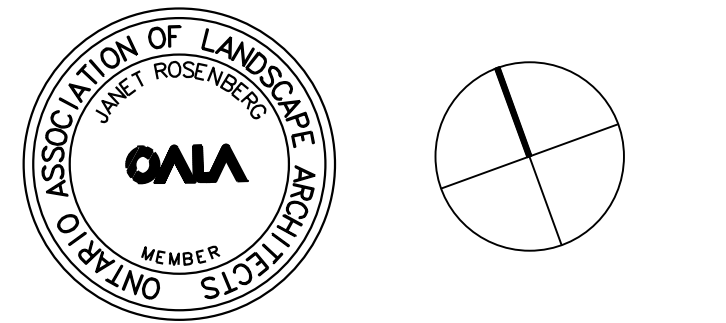
WSP  
2011 QUEENSVIEW DR.  
Ottawa, Ontario  
K2B 8K2  
T: 613 829 2800



- NOTES**
- COPYRIGHT OF THIS DRAWING AND DESIGN IS RESERVED BY THE DESIGNER. THE DRAWING AND ALL ASSOCIATED DOCUMENTS ARE AN INSTRUMENT OF SERVICE BY THE DESIGNER. THE DRAWING AND THE INFORMATION CONTAINED THEREIN MAY NOT BE REPRODUCED IN WHOLE OR IN PART WITHOUT THE PRIOR WRITTEN PERMISSION OF THE DESIGNER.
  - DRAWINGS ARE NOT TO BE SCALED FOR CONSTRUCTION.
  - IT IS THE CONTRACTOR'S RESPONSIBILITY TO NOTIFY THE CONSULTANT IF ANY DISCREPANCIES IN THE DRAWINGS AND CONTRACT DOCUMENTS ARE DISCOVERED.
  - CONTRACTOR TO VERIFY ALL EXISTING UTILITY LOCATIONS AND DEPTHS PRIOR TO CONSTRUCTION AND NOTIFY LANDSCAPE ARCHITECT IF CONFLICTS ARE PRESENT. IF UTILITY RELOCATIONS ARE REQUIRED DUE TO CONFLICT OR DAMAGE, COORDINATE WITH APPROPRIATE UTILITY OWNERS.

- LEGEND**
- EXISTING TREE TO BE REMOVED (PERMIT REQUIRED)
  - EXISTING TREE
  - TREE PROTECTION ZONE FENCING
  - PROPERTY LINE
  - 6m OFFSET FROM PROPERTY LINE

- ISSUE**
- |   |                                 |
|---|---------------------------------|
| 5 |                                 |
| 4 |                                 |
| 3 |                                 |
| 2 | 2022-08-31 REISSUED FOR ZBA/SPA |
| 1 | 2021-11-19 ISSUED FOR ZBA/SPA   |



**Janet Rosenberg & Studio**  
 Landscape Architecture and Urban Design  
 416 656 6665 | 416 656 9756 | www.jrstudio.ca  
 148 Kenwood Avenue, Toronto Ontario M6C 2S3 Canada

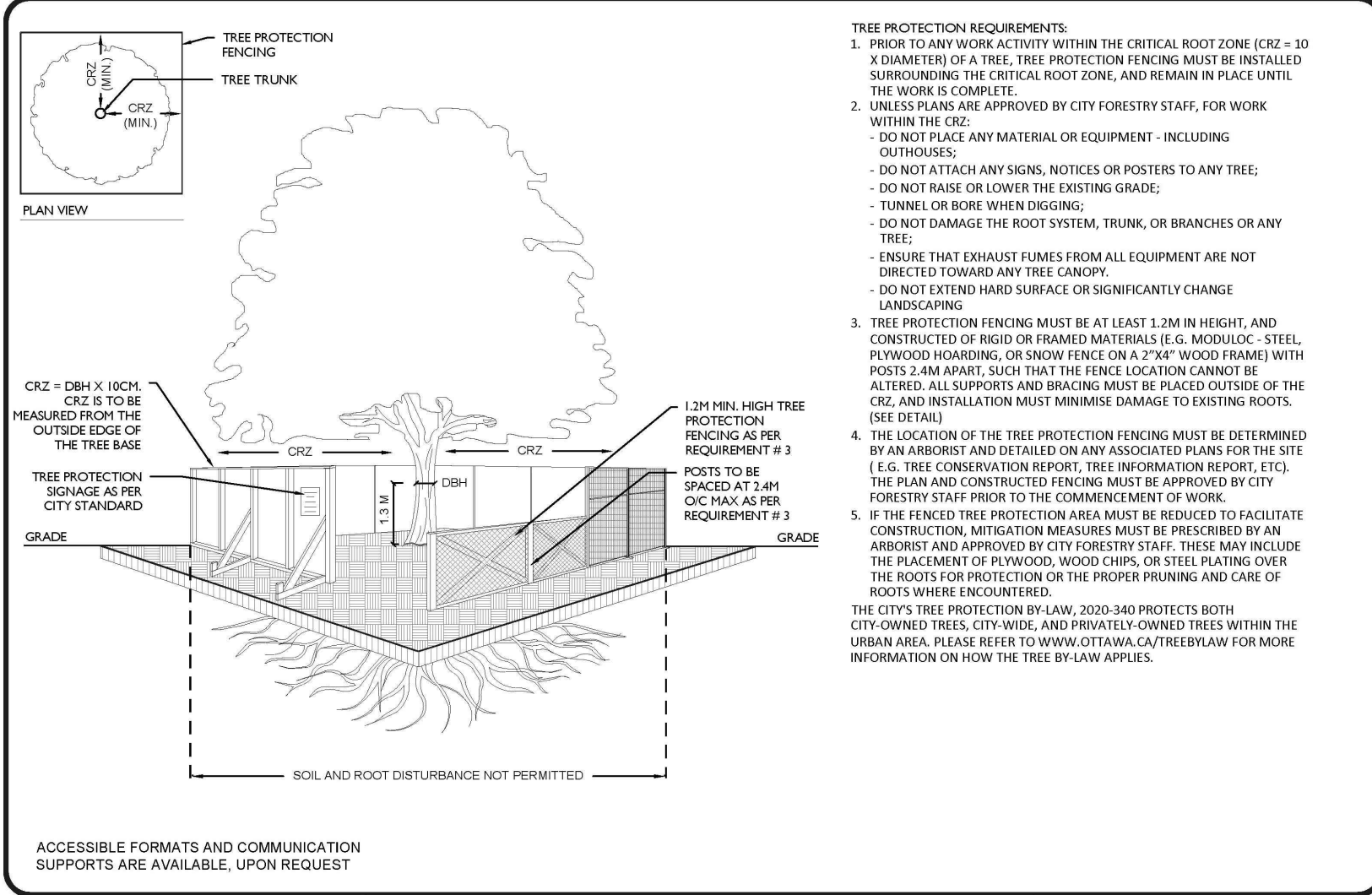
**UNITED PROPERTY RESOURCE CORPORATION**

**QUEENSWOOD UNITED CHURCH**  
 360 KENNEDY LANE EAST, OTTAWA, ONTARIO

**TREE PRESERVATION PLAN**  
 CITY FILE #D07-12-22-0002

SCALE: 1:300  
 DRAWN: RM  
 CHECKED: WS  
 PROJECT NUMBER: 21-029  
 DRAWING DATE: 2021-09-30

**L001**



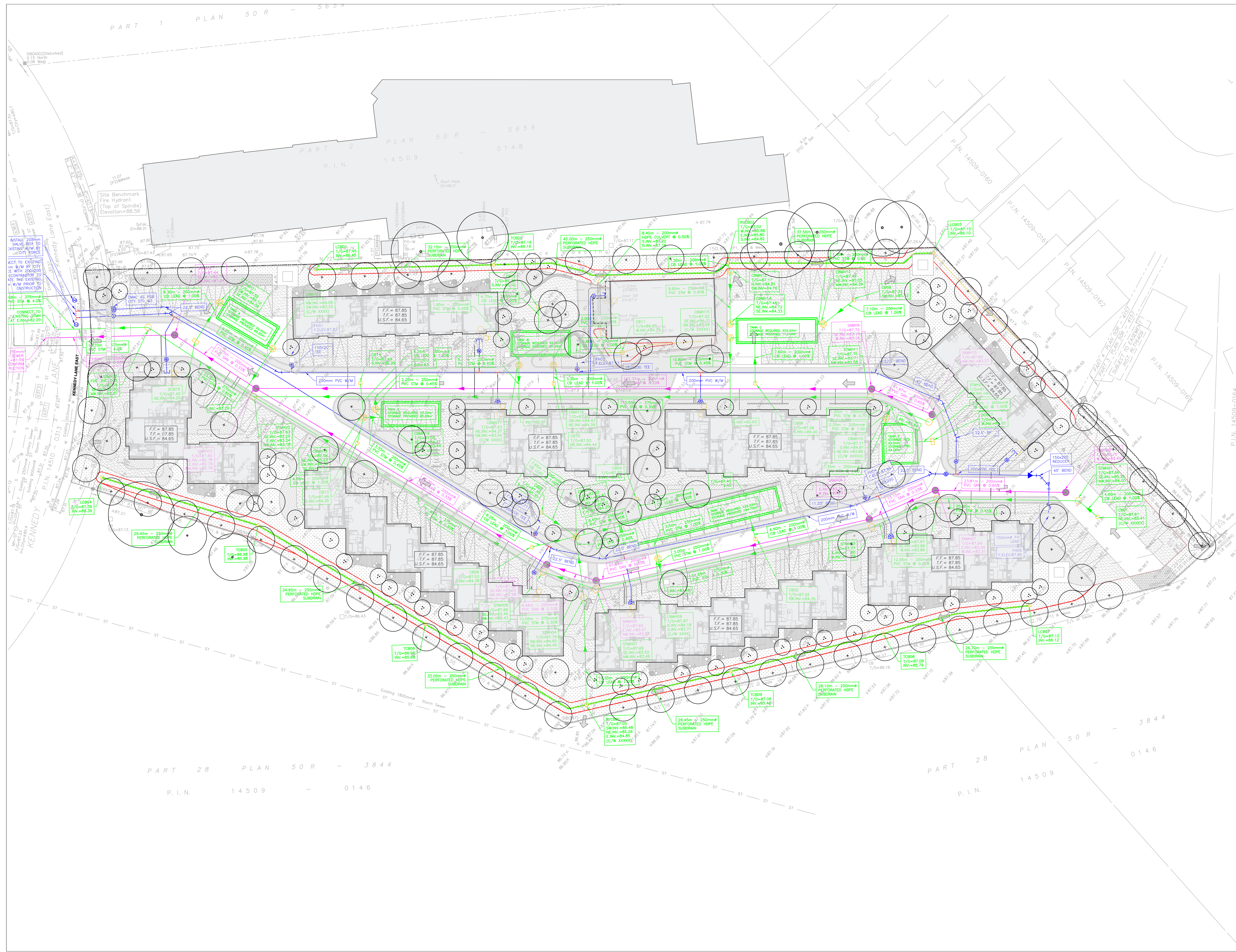
- TREE PROTECTION REQUIREMENTS**
- PRIOR TO ANY WORK ACTIVITY WITHIN THE CRITICAL ROOT ZONE (CRZ = 10 CH DIAMETER OF A TREE), TREE PROTECTION FENCING MUST BE INSTALLED SURROUNDING THE CRITICAL ROOT ZONE, AND REMAIN IN PLACE UNTIL THE WORK IS COMPLETE.
  - UNLESS PLANS ARE APPROVED BY CITY FORESTRY STAFF, FOR WORK WITHIN THE CRZ:
    - DO NOT PLACE ANY MATERIAL OR EQUIPMENT - INCLUDING OUTRIGGERS -
    - DO NOT ATTACH ANY SIGNS, NOTICES OR POSTERS TO ANY TREE.
    - DO NOT BASE OR LOWER THE EXISTING GRADE;
    - TUNNEL OR BORE WHEN DIGGING;
    - DO NOT DAMAGE THE ROOT SYSTEM, TRUNK, OR BRANCHES OR ANY TREE;
    - ENSURE THAT EXHAUST FUMES FROM ALL EQUIPMENT ARE NOT DIRECTED TOWARD ANY TREE CANOPY;
    - DO NOT EXTEND HARD SURFACE OR SIGNIFICANTLY CHANGE LANDSCAPING;
  - TREE PROTECTION FENCING MUST BE AT LEAST 1.2M IN HEIGHT, AND CONSTRUCTED BY BRUSH OR FRAMED MATERIALS (E.G. KNOCKDOWNS, STEEL PLYWOOD HOARDING, OR SNOW FENCE ON A 2"X4" WOOD FRAME) WITH POSTS 2.4M APART, SUCH THAT THE FENCE LOCATION CANNOT BE ALTERED. ALL SUPPORTS AND BRACING MUST BE PLACED OUTSIDE OF THE CRZ, AND INSTALLATION MUST MINIMIZE DAMAGE TO EXISTING ROOTS. (SEE DETAILS)
  - THE LOCATION OF THE TREE PROTECTION FENCING MUST BE DETERMINED BY AN ARBORIST AND DETAILED ON ANY ASSOCIATED PLANS FOR THE SITE (E.G. TREE CONSERVATION REPORT, TREE INFORMATION REPORT, ETC.). THE PLAN AND CONSTRUCTION FENCING MUST BE APPROVED BY CITY FORESTRY STAFF PRIOR TO THE COMMENCEMENT OF WORK.
  - IF THE FENCED TREE PROTECTION AREA MUST BE RELOCATED TO FACILITATE CONSTRUCTION, MITIGATION MEASURES MUST BE PRESCRIBED BY AN ARBORIST AND APPROVED BY CITY FORESTRY STAFF. THESE MAY INCLUDE THE PLACEMENT OF PLYWOOD, WOOD CHIPS, OR STEEL PLATING OVER THE ROOTS FOR PROTECTION OR THE PROPER PRUNING AND CARE OF ROOTS WHERE ENCOUNTERED.
- THE CITY TREE PROTECTION BY-LAW, 2020-140 PROTECTS BOTH CITY-OWNED TREES, CITY-WIDE, AND PRIVATELY-OWNED TREES WITHIN THE URBAN AREA. PLEASE REFER TO WWW.OTTAWA.CA/TREESBYLAW FOR MORE INFORMATION ON HOW THE TREE BY-LAW APPLIES.

**Ottawa**

**TREE PROTECTION SPECIFICATION**

TO BE IMPLEMENTED FOR RETAINED TREES, BOTH ON-SITE AND ON ADJACENT SITES, PRIOR TO ANY TREE REMOVAL OR SITE WORKS AND MAINTAINED FOR THE DURATION OF WORK ACTIVITIES ON-SITE.

SCALE: NTS  
 DATE: MARCH 2021  
 DRAWING NO.: 1 of 1



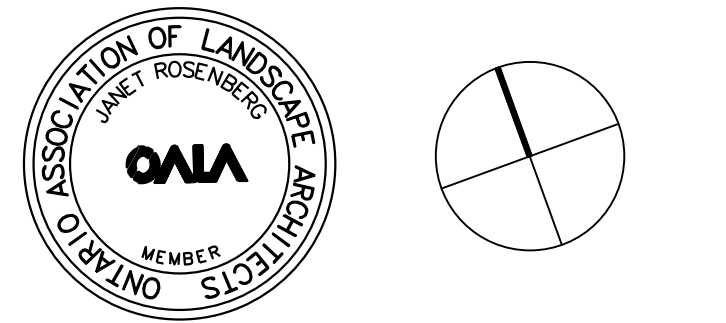
**NOTES**

- COPYRIGHT OF THIS DRAWING AND DESIGN IS RESERVED BY THE DESIGNER. THE DRAWING AND ALL ASSOCIATED DOCUMENTS ARE AN INSTRUMENT OF SERVICE BY THE DESIGNER. THE DRAWING AND THE INFORMATION CONTAINED THEREIN MAY NOT BE REPRODUCED IN WHOLE OR IN PART WITHOUT THE PRIOR WRITTEN PERMISSION OF THE DESIGNER.
- DRAWINGS ARE NOT TO BE SCALED FOR CONSTRUCTION.
- IT IS THE CONTRACTOR'S RESPONSIBILITY TO NOTIFY THE CONSULTANT IF ANY DISCREPANCIES IN THE DRAWINGS AND CONTRACT DOCUMENTS ARE DISCOVERED.
- CONTRACTOR TO VERIFY ALL EXISTING UTILITY LOCATIONS AND DEPTHS PRIOR TO CONSTRUCTION AND NOTIFY LANDSCAPE ARCHITECT IF CONFLICTS ARE PRESENT. IF UTILITY RELOCATIONS ARE REQUIRED DUE TO CONFLICT OR DAMAGE, COORDINATE WITH APPROPRIATE UTILITY OWNERS.

- LEGEND**
- EXISTING TREE
  - NEW TREE
  - NEW MULTI-STEM TREE
  - LIGHT POLE
  - PERENNIAL PLANT BED
  - MEADOW
  - COMPACTED CRUSHED STONE
  - UNIT PAVING
  - SNOW STORAGE
  - PROPERTY LINE
  - BIKE BIN
  - WATER MAIN
  - STORMWATER
  - SANITARY
  - SWALE

**ISSUE**

5	
4	
3	
2	
1	2022-09-31 REISSUED FOR ZBA/SPA



**Janet Rosenberg & Studio**  
 Landscape Architecture and Urban Design  
 1416 656 6665 | 416 656 5756 www.jrstudio.ca  
 148 Kenwood Avenue, Toronto Ontario M6C 2S3 Canada

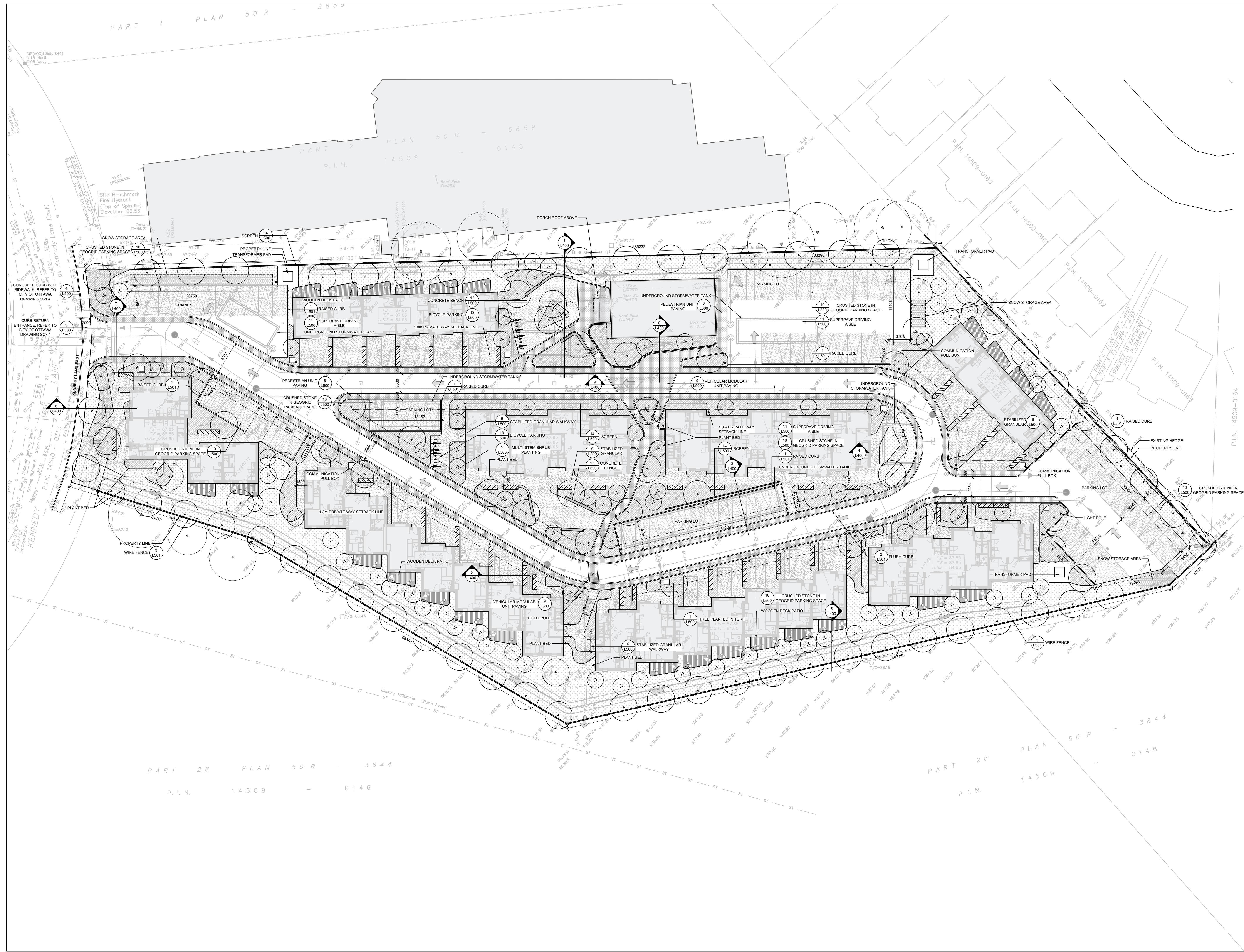
**UNITED PROPERTY RESOURCE CORPORATION**

**QUEENSWOOD UNITED CHURCH**  
 380 KENNEDY LANE EAST, OTTAWA, ONTARIO

**COMPOSITE UTILITY LANDSCAPE PLAN**  
 CITY FILE #D07-12-22-0002

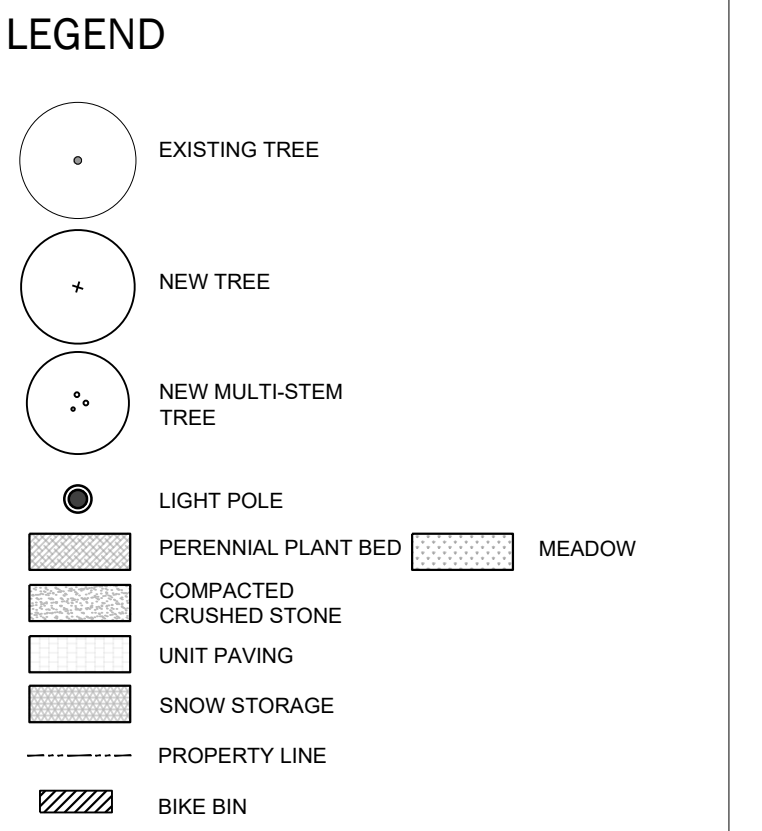
SCALE: 1:300  
 DRAWN: RM  
 CHECKED: WS  
 PROJECT NUMBER: 21-029  
 DRAWING DATE: 2021-09-30

**L002**



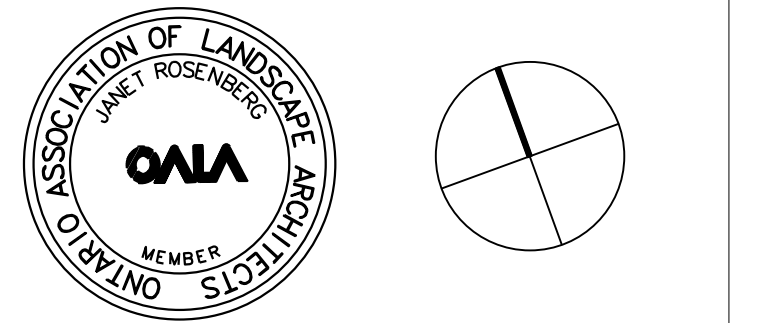
**NOTES**

1. COPYRIGHT OF THIS DRAWING AND DESIGN IS RESERVED BY THE DESIGNER. THE DRAWING AND ALL ASSOCIATED DOCUMENTS ARE AN INSTRUMENT OF SERVICE BY THE DESIGNER. THE DRAWING AND THE INFORMATION CONTAINED THEREIN MAY NOT BE REPRODUCED IN WHOLE OR IN PART WITHOUT THE PRIOR WRITTEN PERMISSION OF THE DESIGNER.
2. DRAWINGS ARE NOT TO BE SCALED FOR CONSTRUCTION.
3. IT IS THE CONTRACTOR'S RESPONSIBILITY TO NOTIFY THE CONSULTANT IF ANY DISCREPANCIES IN THE DRAWINGS AND CONTRACT DOCUMENTS ARE DISCOVERED.
4. CONTRACTOR TO VERIFY ALL EXISTING UTILITY LOCATIONS AND DEPTHS PRIOR TO CONSTRUCTION AND NOTIFY LANDSCAPE ARCHITECT IF CONFLICTS ARE PRESENT. IF UTILITY RELOCATIONS ARE REQUIRED DUE TO CONFLICT OR DAMAGE, COORDINATE WITH APPROPRIATE UTILITY OWNERS.



**ISSUE**

5	
4	
3	
2	2022-08-31 REISSUED FOR ZBA/SPA
1	2021-11-19 ISSUED FOR ZBA/SPA



**Janet Rosenberg & Studio**  
 Landscape Architecture and Urban Design  
 416 656 6665 | 416 656 5756 www.jrstudio.ca  
 148 Kenwood Avenue, Toronto Ontario M6C 2S3 Canada

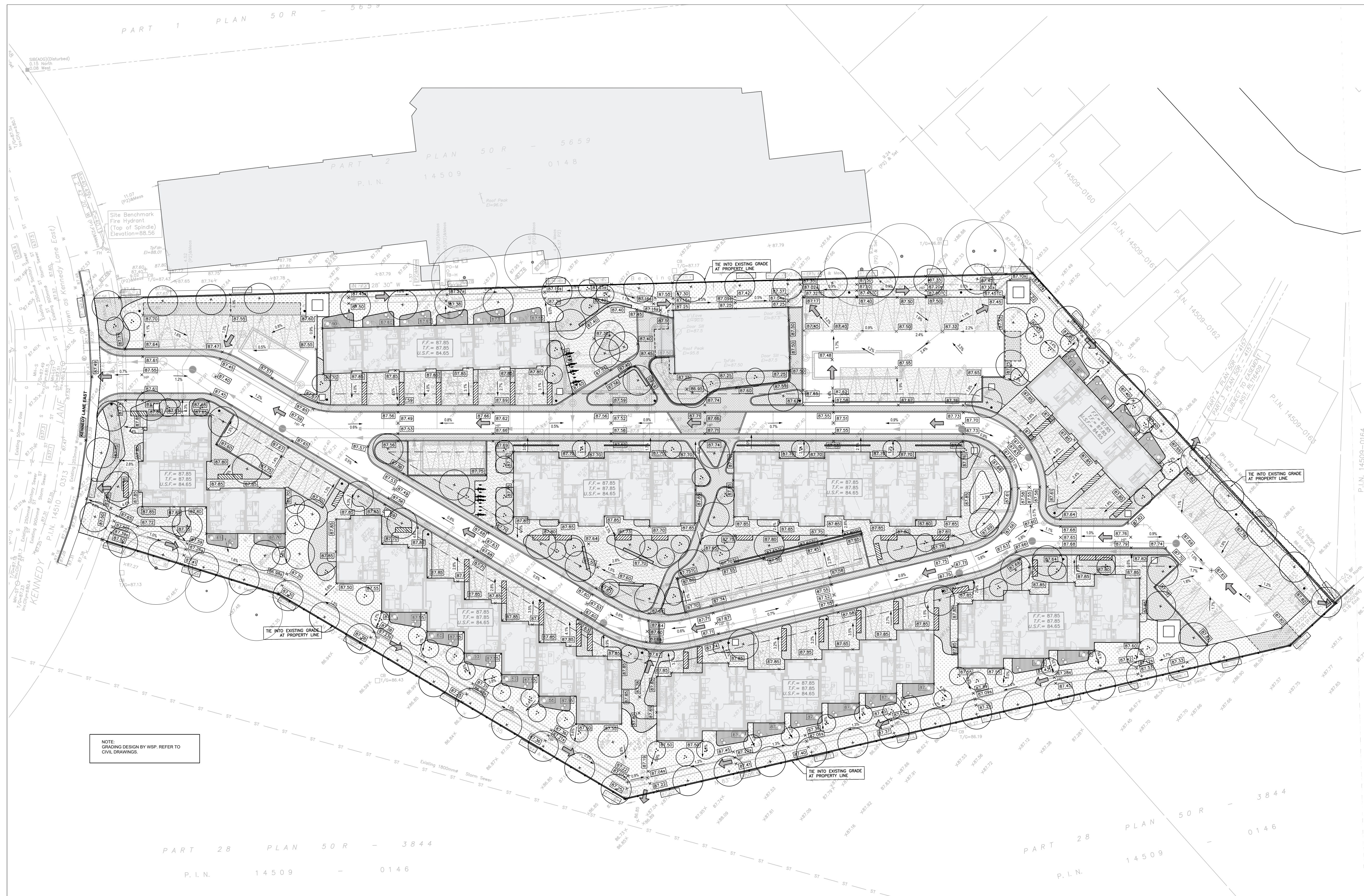
**UNITED PROPERTY RESOURCE CORPORATION**

**QUEENSWOOD UNITED CHURCH**  
 360 KENNEDY LANE EAST, OTTAWA, ONTARIO

**LANDSCAPE LAYOUT PLAN**  
 CITY FILE #D07-12-22-0002

SCALE: 1:300  
 DRAWN: RM  
 CHECKED: WS  
 PROJECT NUMBER: 21-029  
 DRAWING DATE: 2021-09-30

**L100**



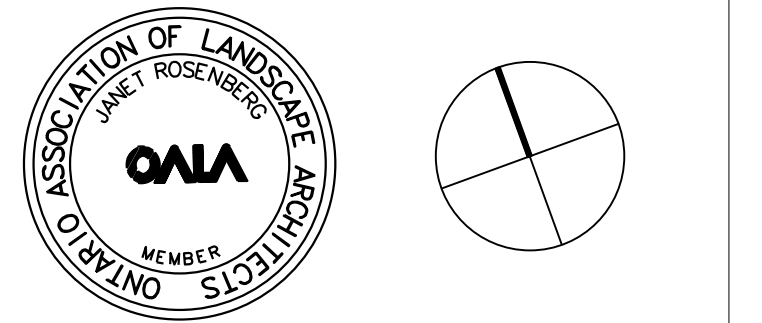
- NOTES**
1. COPYRIGHT OF THIS DRAWING AND DESIGN IS RESERVED BY THE DESIGNER. THE DRAWING AND ALL ASSOCIATED DOCUMENTS ARE AN INSTRUMENT OF SERVICE BY THE DESIGNER. THE DRAWING AND THE INFORMATION CONTAINED THEREIN MAY NOT BE REPRODUCED IN WHOLE OR IN PART WITHOUT THE PRIOR WRITTEN PERMISSION OF THE DESIGNER.
  2. DRAWINGS ARE NOT TO BE SCALED FOR CONSTRUCTION.
  3. IT IS THE CONTRACTOR'S RESPONSIBILITY TO NOTIFY THE CONSULTANT IF ANY DISCREPANCIES IN THE DRAWINGS AND CONTRACT DOCUMENTS ARE DISCOVERED.
  4. CONTRACTOR TO VERIFY ALL EXISTING UTILITY LOCATIONS AND DEPTHS PRIOR TO CONSTRUCTION AND NOTIFY LANDSCAPE ARCHITECT IF CONFLICTS ARE PRESENT. IF UTILITY RELOCATIONS ARE REQUIRED DUE TO CONFLICT OR DAMAGE, COORDINATE WITH APPROPRIATE UTILITY OWNERS.

- LEGEND**
- EXISTING TREE
  - NEW TREE
  - NEW MULTI-STEM TREE
  - LIGHT POLE
  - PERENNIAL PLANT BED
  - MEADOW
  - COMPACTED CRUSHED STONE
  - UNIT PAVING
  - SNOW STORAGE
  - PROPERTY LINE
  - BIKE BIN

**ISSUE**

5  
4  
3  
2  
1

2022-09-31 REISSUED FOR ZBA/SPA



**Janet Rosenberg & Studio**  
Landscape Architecture and Urban Design  
416 656 6665 | 416 656 5756 www.jrstudio.ca  
148 Kenwood Avenue, Toronto Ontario M6C 2S3 Canada

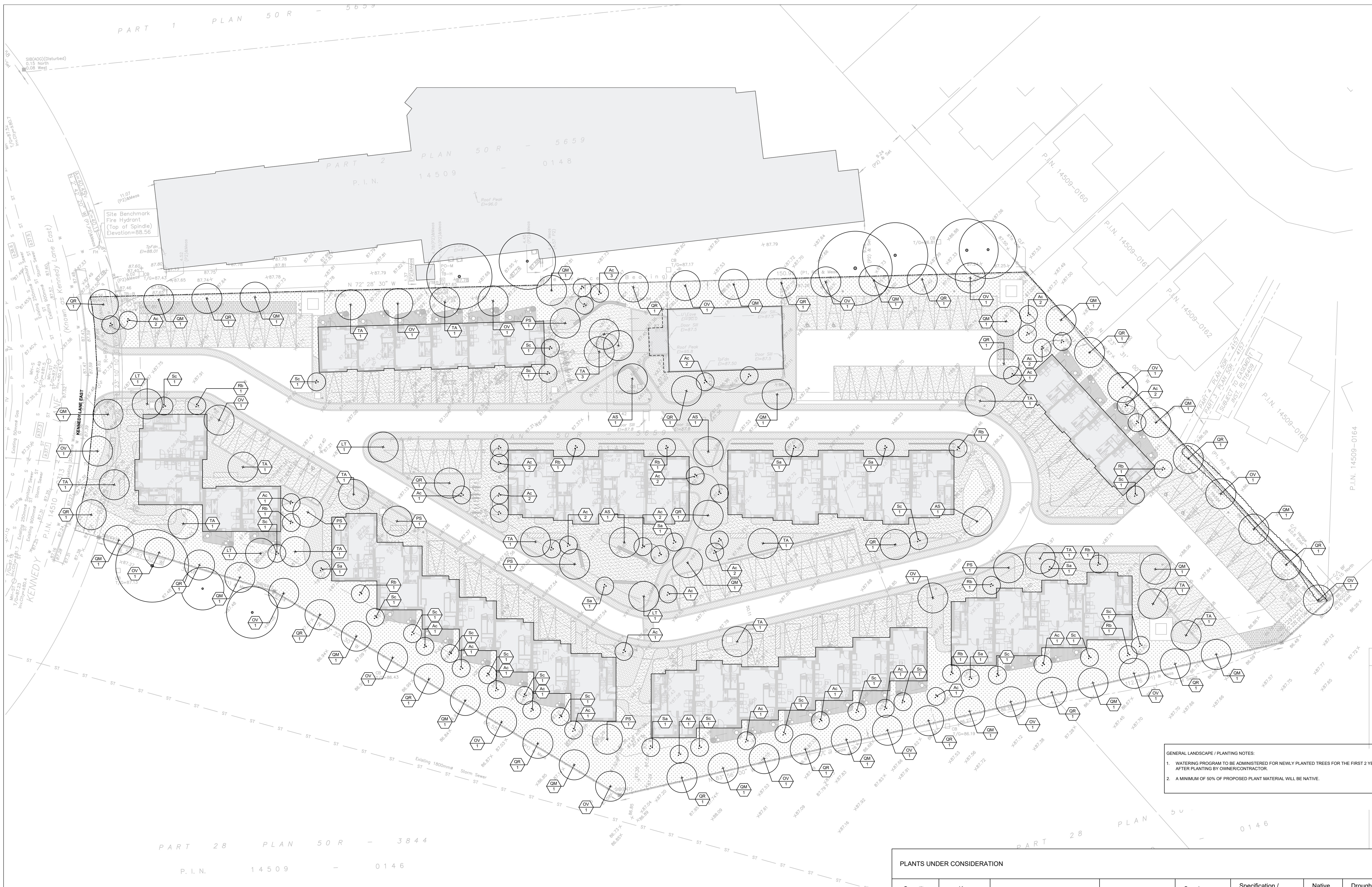
**UNITED PROPERTY RESOURCE CORPORATION**

**QUEENSWOOD UNITED CHURCH**  
380 KENNEDY LANE EAST, OTTAWA, ONTARIO

**GRADING PLAN**  
CITY FILE #D07-12-22-002

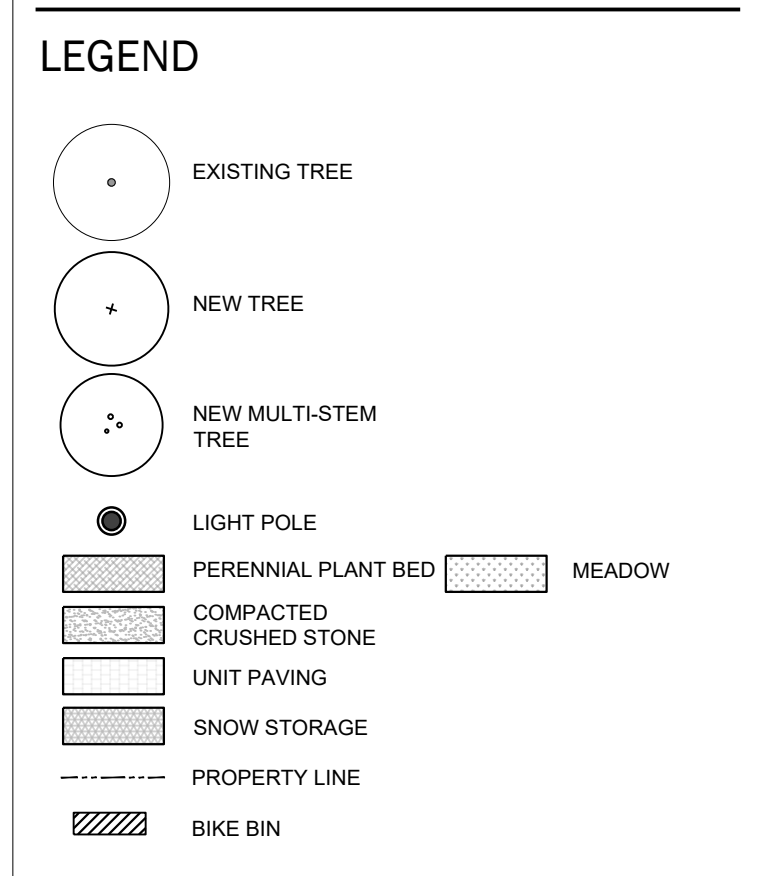
SCALE: 1:300  
DRAWN: RM  
CHECKED: WS  
PROJECT NUMBER: 21-029  
DRAWING DATE: 2021-09-30

**L200**



**NOTES**

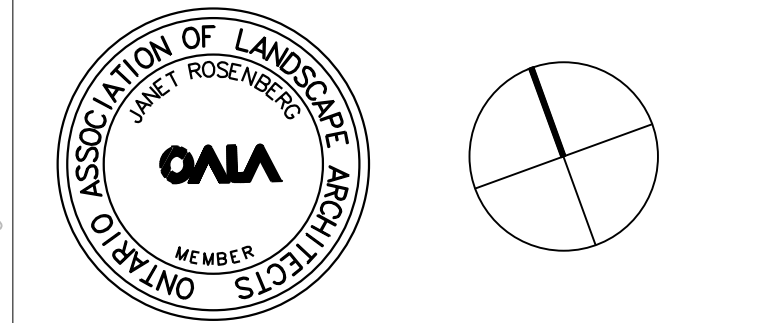
- COPYRIGHT OF THIS DRAWING AND DESIGN IS RESERVED BY THE DESIGNER. THE DRAWING AND ALL ASSOCIATED DOCUMENTS ARE AN INSTRUMENT OF SERVICE BY THE DESIGNER. THE DRAWING AND THE INFORMATION CONTAINED THEREIN MAY NOT BE REPRODUCED IN WHOLE OR IN PART WITHOUT THE PRIOR WRITTEN PERMISSION OF THE DESIGNER.
- DRAWINGS ARE NOT TO BE SCALED FOR CONSTRUCTION.
- IT IS THE CONTRACTOR'S RESPONSIBILITY TO NOTIFY THE CONSULTANT IF ANY DISCREPANCIES IN THE DRAWING AND CONTRACT DOCUMENTS ARE DISCOVERED.
- CONTRACTOR TO VERIFY ALL EXISTING UTILITY LOCATIONS AND DEPTHS PRIOR TO CONSTRUCTION AND NOTIFY LANDSCAPE ARCHITECT IF CONFLICTS ARE PRESENT. IF UTILITY RELOCATIONS ARE REQUIRED DUE TO CONFLICT OR DAMAGE, COORDINATE WITH APPROPRIATE UTILITY OWNERS.



**ISSUE**

5
4
3
2
1

2022-08-31 REISSUED FOR ZBA/SPA



**Janet Rosenberg & Studio**  
 Landscape Architecture and Urban Design  
 416 656 6665 | 416 656 5756 www.jrstudio.ca  
 148 Kenwood Avenue, Toronto Ontario M6C 2S3 Canada

**UNITED PROPERTY RESOURCE CORPORATION**

**QUEENSWOOD UNITED CHURCH**  
 380 KENNEDY LANE EAST, OTTAWA, ONTARIO

**GENERAL LANDSCAPE / PLANTING NOTES:**

- WATERING PROGRAM TO BE ADMINISTERED FOR NEWLY PLANTED TREES FOR THE FIRST 2 YEARS AFTER PLANTING BY OWNER/CONTRACTOR.
- A MINIMUM OF 50% OF PROPOSED PLANT MATERIAL WILL BE NATIVE.

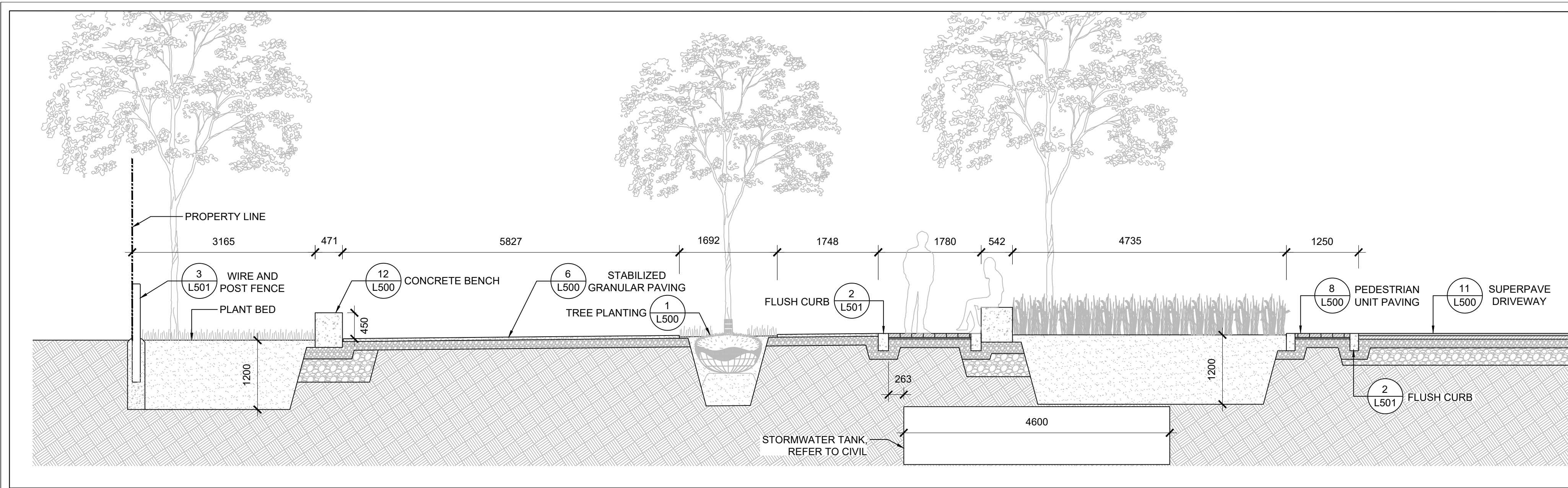
**PLANTS UNDER CONSIDERATION**

Quantity	Key	Botanical	Common	Spacing	Specification / Notes	Native Y/N	Drought Tolerant Y/N
4	AS	<i>Acer saccharum</i>	Sugar Maple	Refer to plan	60mm WB	Y	N
4	LT	<i>Liriodendron tulipifera</i>	Tulip Tree	Refer to plan	60mm WB	Y	N
20	OV	<i>Ostrya virginiana</i>	Ironwood	Refer to plan	60mm WB	Y	Y
6	PS	<i>Prunus serotina</i>	Black Cherry	Refer to plan	200 cm 10 gal.	Y	N
23	QM	<i>Quercus macrocarpa</i>	Bur Oak	Refer to plan	60mm WB	Y	Y
23	QR	<i>Quercus rubra</i>	Red Oak	Refer to plan	60mm WB	Y	Y
17	TA	<i>Tilia americana</i>	Basswood	Refer to plan	60mm WB	Y	Y
41	Ac	<i>Amelanchier canadensis</i>	Serviceberry	Refer to plan	Clump 150cm WB	Y	N
11	Rb	<i>Rosa blanda</i>	Meadow Rose	Refer to plan	2 gal.	Y	N
8	Sa	<i>Symphoricarpos albus</i>	Snowberry	Refer to plan	40 cm 3 gal.	Y	Y
20	Sc	<i>Sambucus canadensis</i>	American Elderberry	Refer to plan	40 cm 3 gal.	Y	N

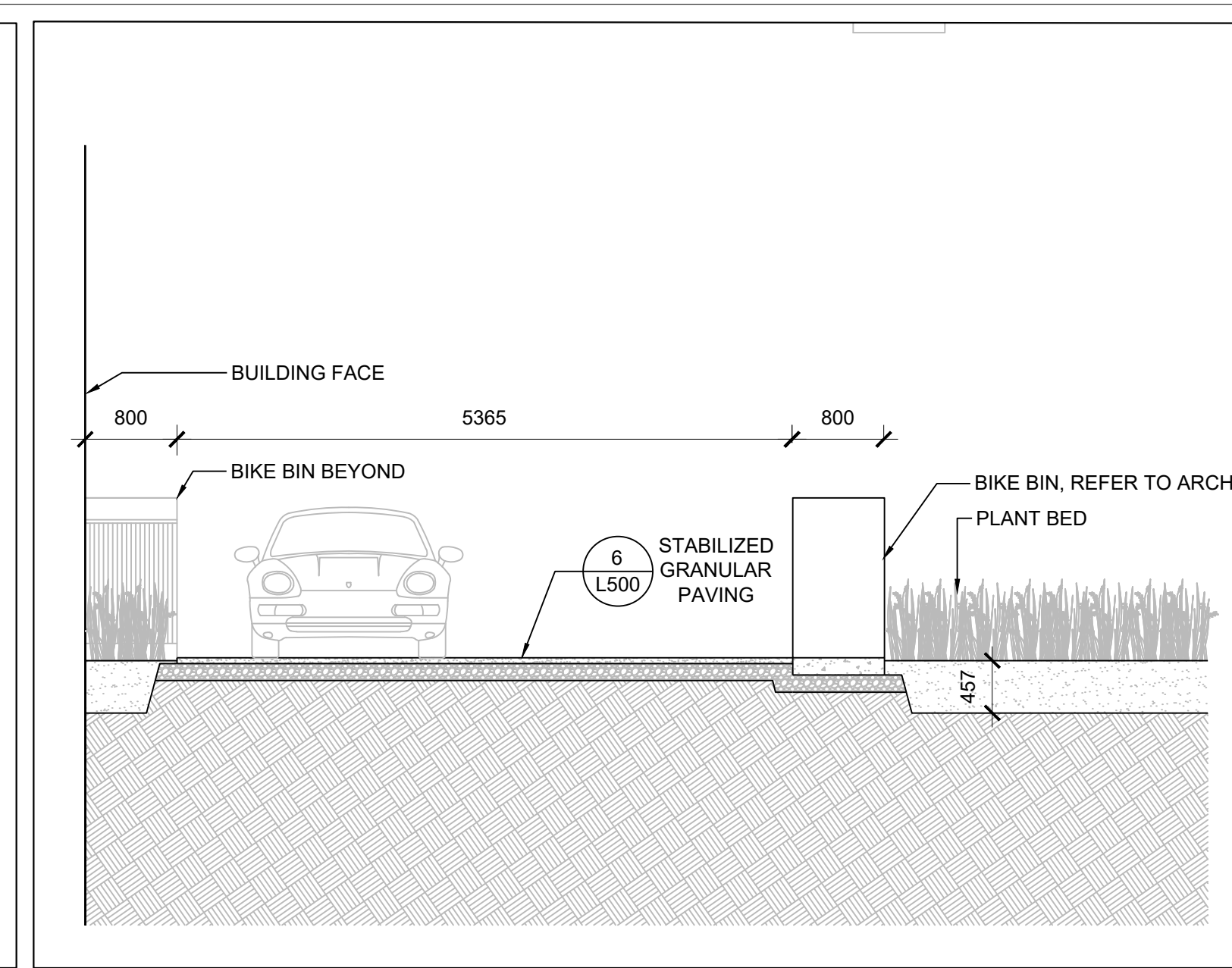
**PLANTING PLAN**  
 CITY FILE #D07-12-22-0002

SCALE: 1:300  
 DRAWN: RM  
 CHECKED: WS  
 PROJECT NUMBER: 21-029  
 DRAWING DATE: 2021-09-30

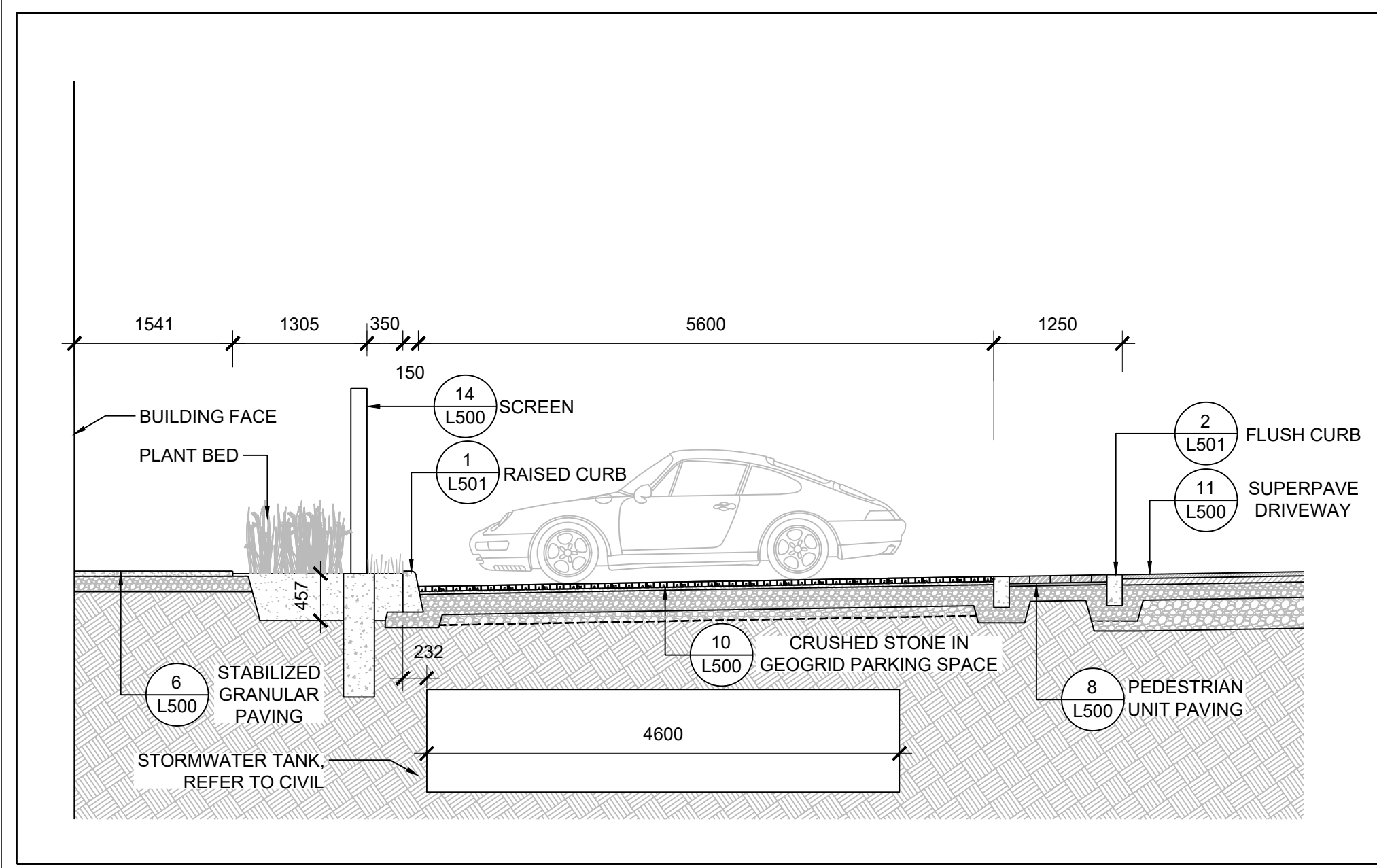
**L300**



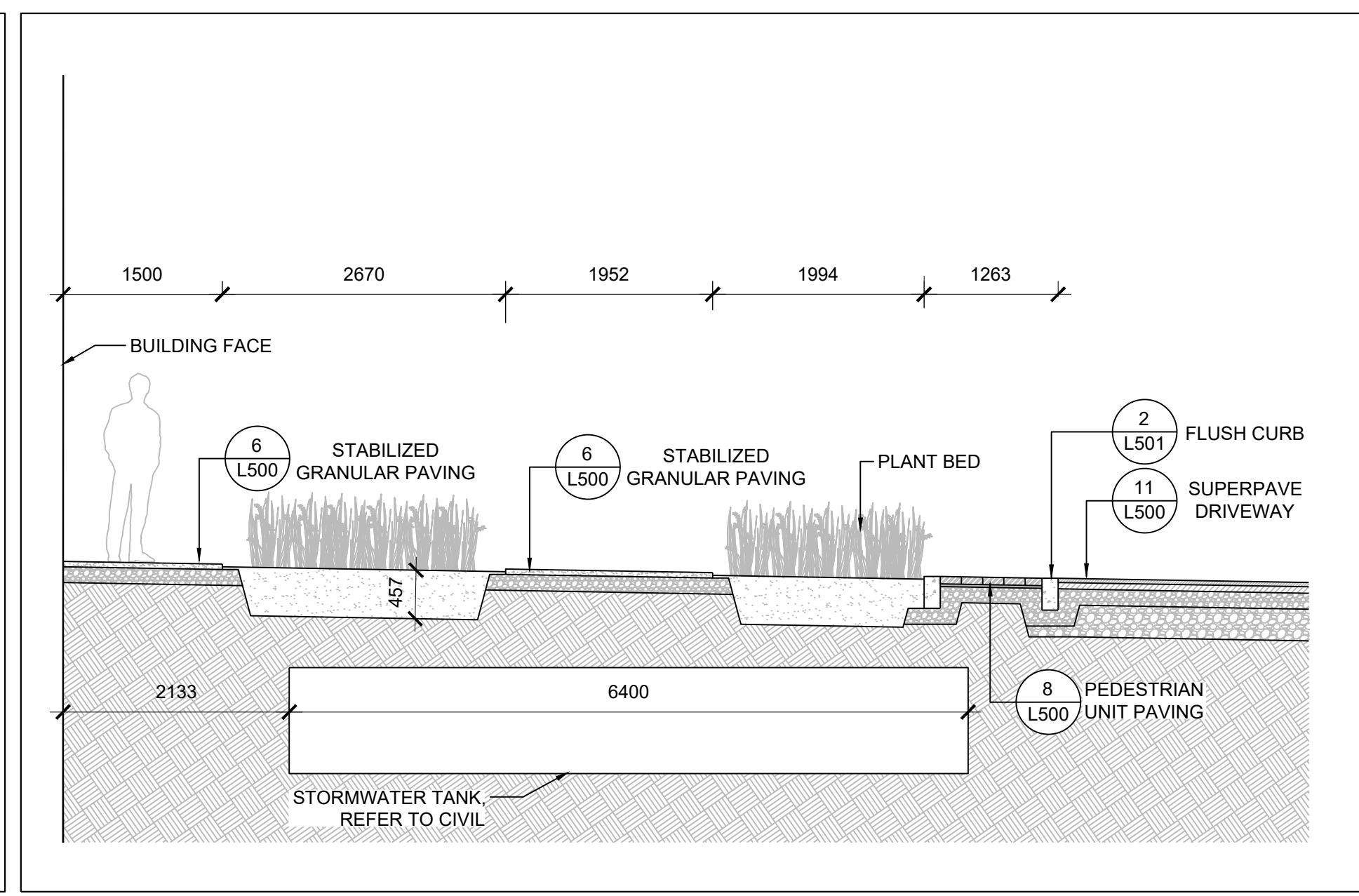
1 GATHERING AREA SECTION  
SCALE: 1 : 50



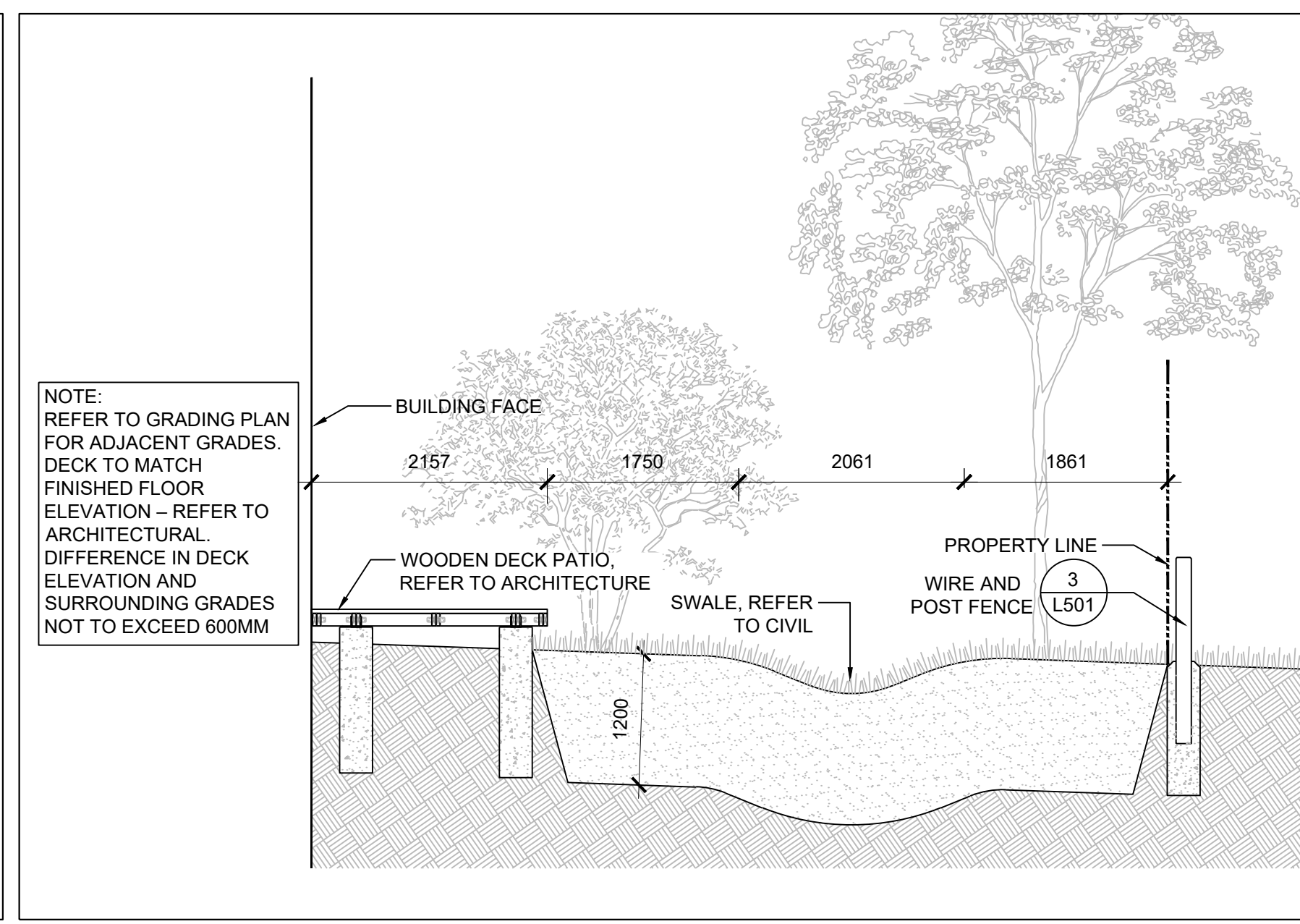
2 UNIT ENTRANCE SECTION  
SCALE: 1 : 50



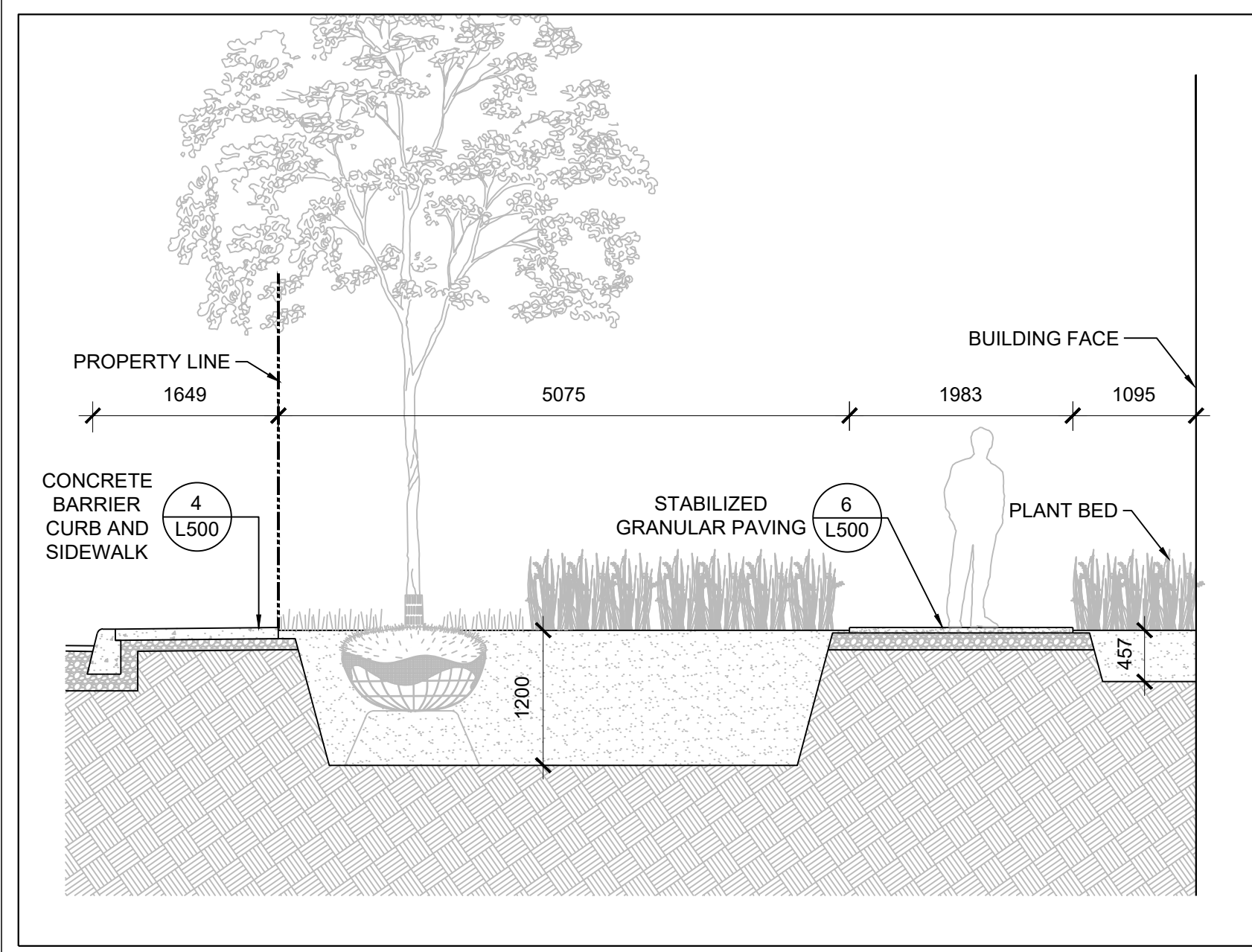
3 PARKING LOT SECTION  
SCALE: 1 : 50



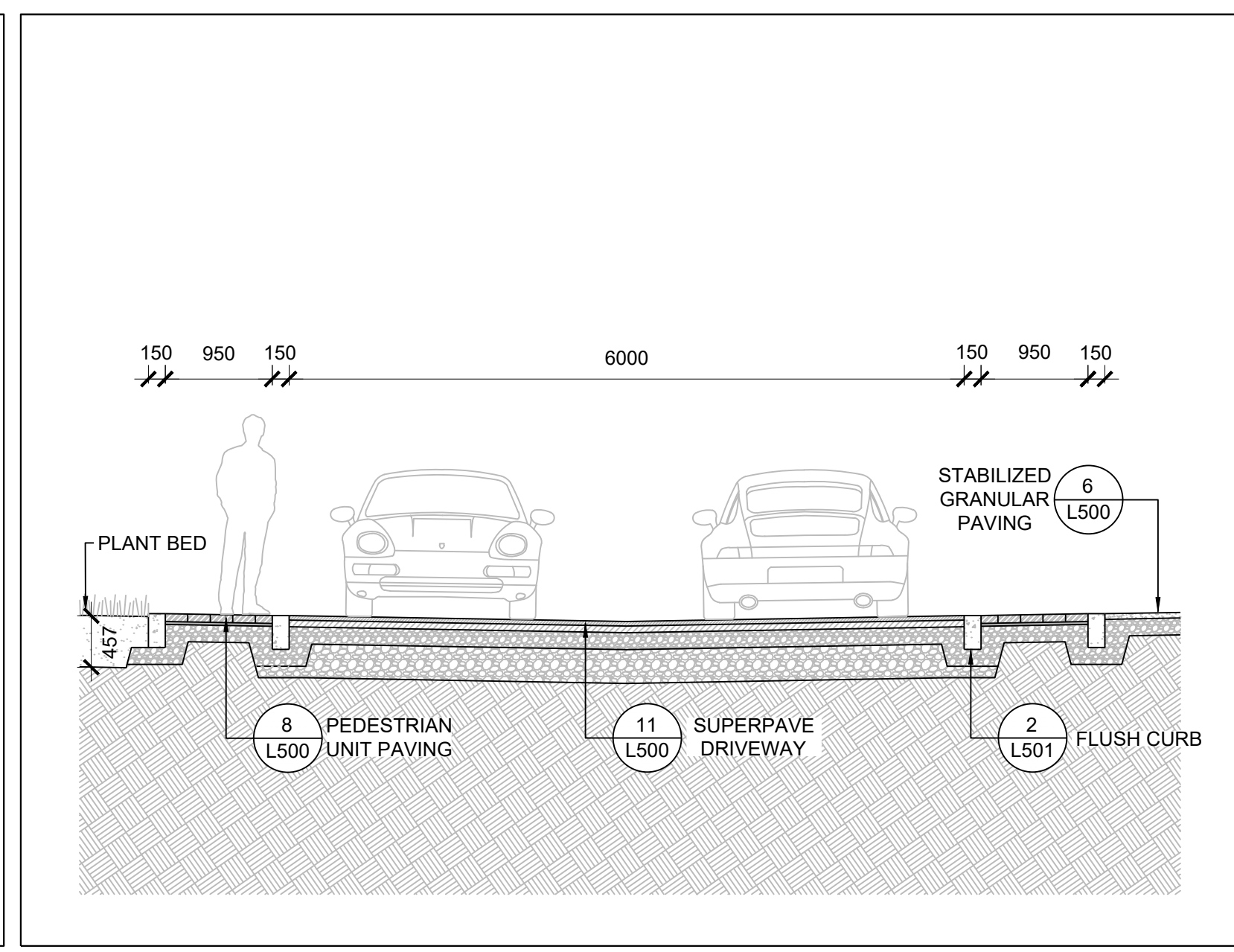
4 WALKWAY SECTION  
SCALE: 1 : 50



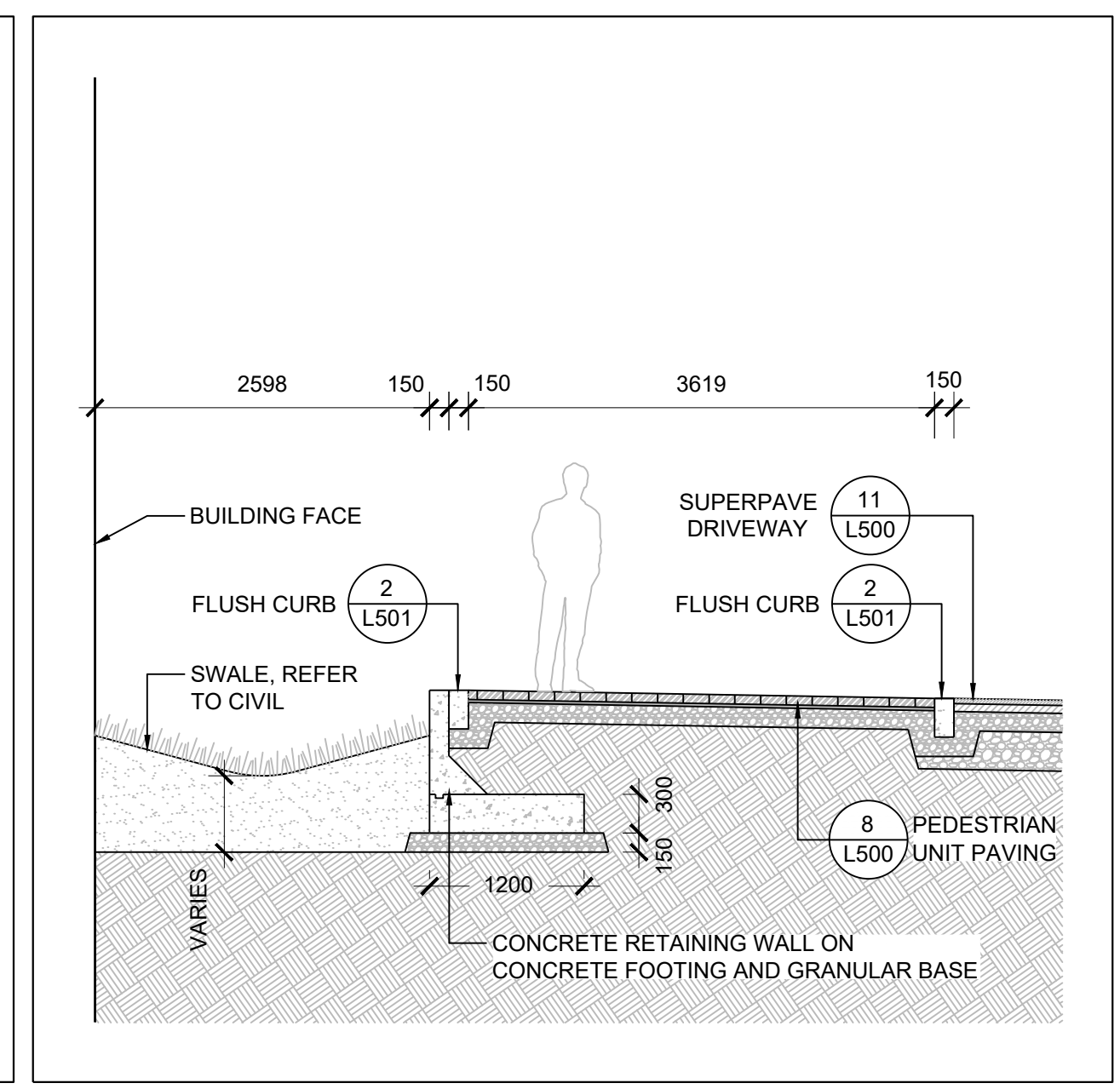
5 PATIO SECTION  
SCALE: 1 : 50



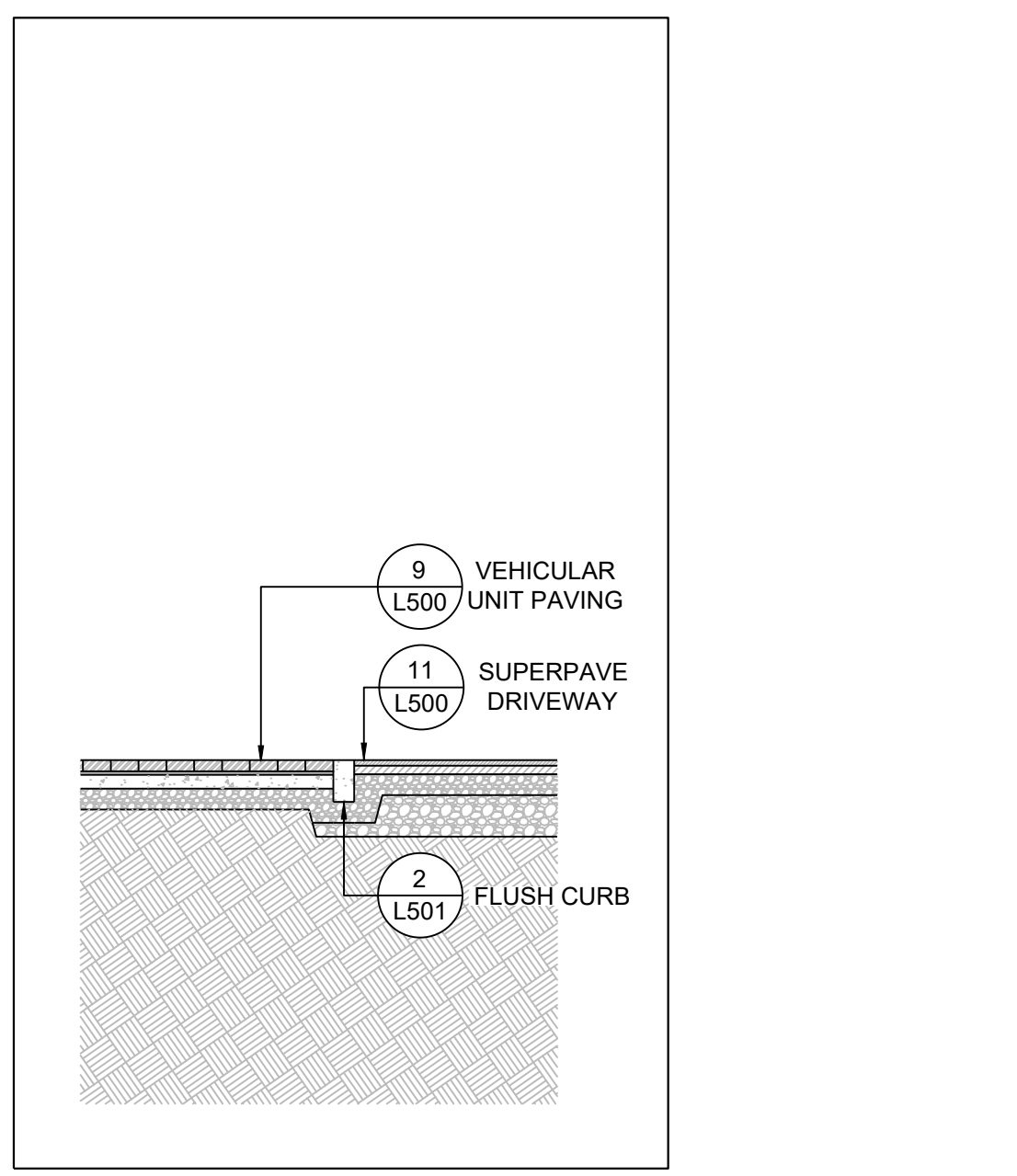
6 SIDEWALK SECTION  
SCALE: 1 : 50



7 DRIVEWAY SECTION  
SCALE: 1 : 50



8 DRIVEWAY SECTION  
SCALE: 1 : 50



9 DRIVEWAY SECTION  
SCALE: 1 : 50

**NOTES**

- COPYRIGHT OF THIS DRAWING AND DESIGN IS RESERVED BY THE DESIGNER. THE DRAWING AND ALL ASSOCIATED DOCUMENTS ARE AN INSTRUMENT OF SERVICE BY THE DESIGNER. THE DRAWING AND THE INFORMATION CONTAINED THEREIN MAY NOT BE REPRODUCED IN WHOLE OR IN PART WITHOUT THE PRIOR WRITTEN PERMISSION OF THE DESIGNER.
- DRAWINGS ARE NOT TO BE SCALED FOR CONSTRUCTION.
- IT IS THE CONTRACTOR'S RESPONSIBILITY TO NOTIFY THE CONSULTANT IF ANY DISCREPANCIES IN THE DRAWINGS AND CONTRACT DOCUMENTS ARE DISCOVERED.
- CONTRACTOR TO VERIFY ALL EXISTING UTILITY LOCATIONS AND DEPTHS PRIOR TO CONSTRUCTION AND NOTIFY LANDSCAPE ARCHITECT IF CONFLICTS ARE PRESENT. IF UTILITY RELOCATIONS ARE REQUIRED DUE TO CONFLICT OR DAMAGE, COORDINATE WITH APPROPRIATE UTILITY OWNERS.

**LEGEND**

**ISSUE**

5	
4	
3	
2	
1	2022-08-31 REISSUED FOR ZBA/SPA



**Janet Rosenberg & Studio**  
Landscape Architecture and Urban Design  
416 656 6665 | 416 656 5756 | www.jrstudio.ca  
148 Kenwood Avenue, Toronto Ontario M6C 2S3 Canada

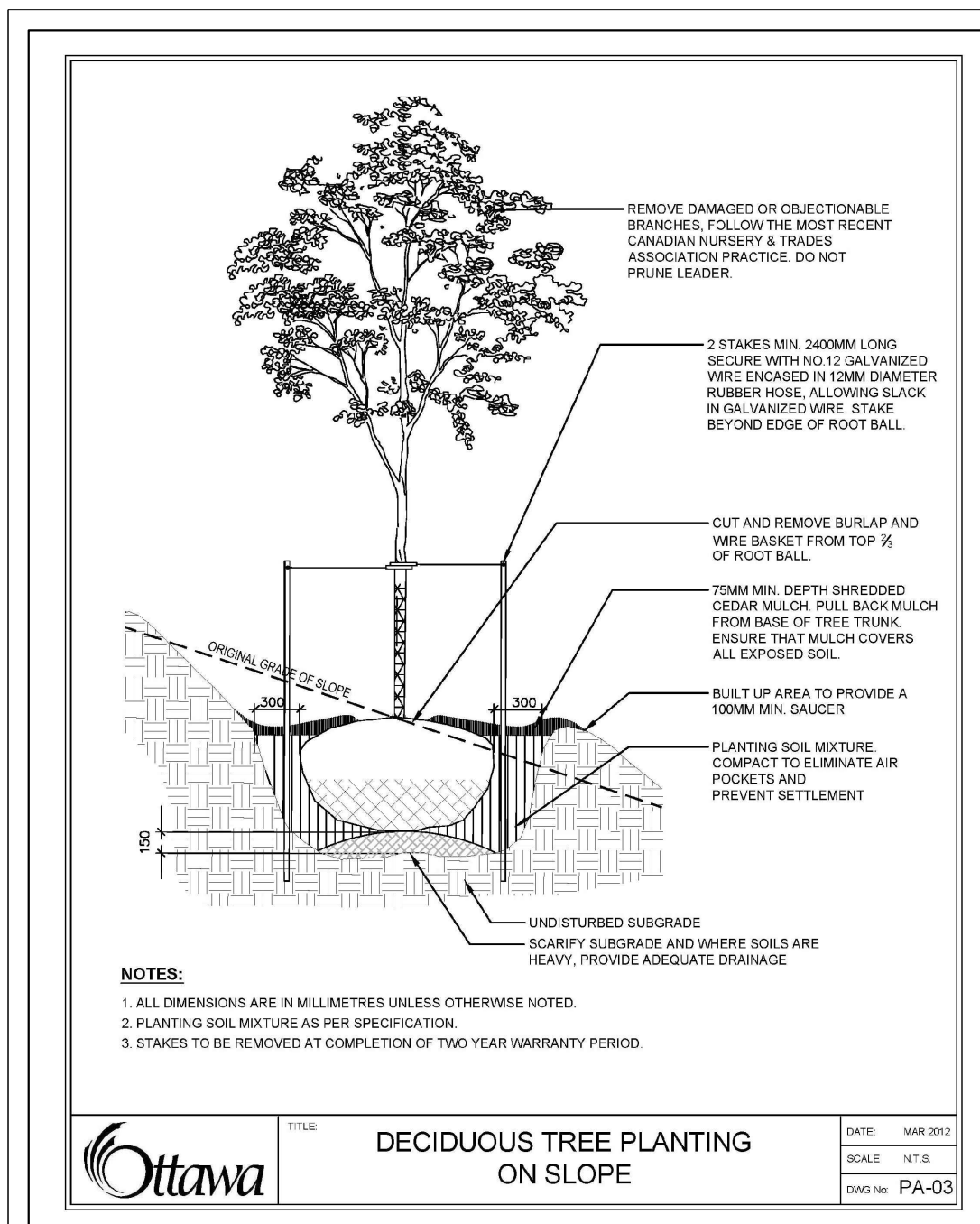
**UNITED PROPERTY RESOURCE CORPORATION**

**QUEENSWOOD UNITED CHURCH**  
360 KENNEDY LANE EAST, OTTAWA, ONTARIO

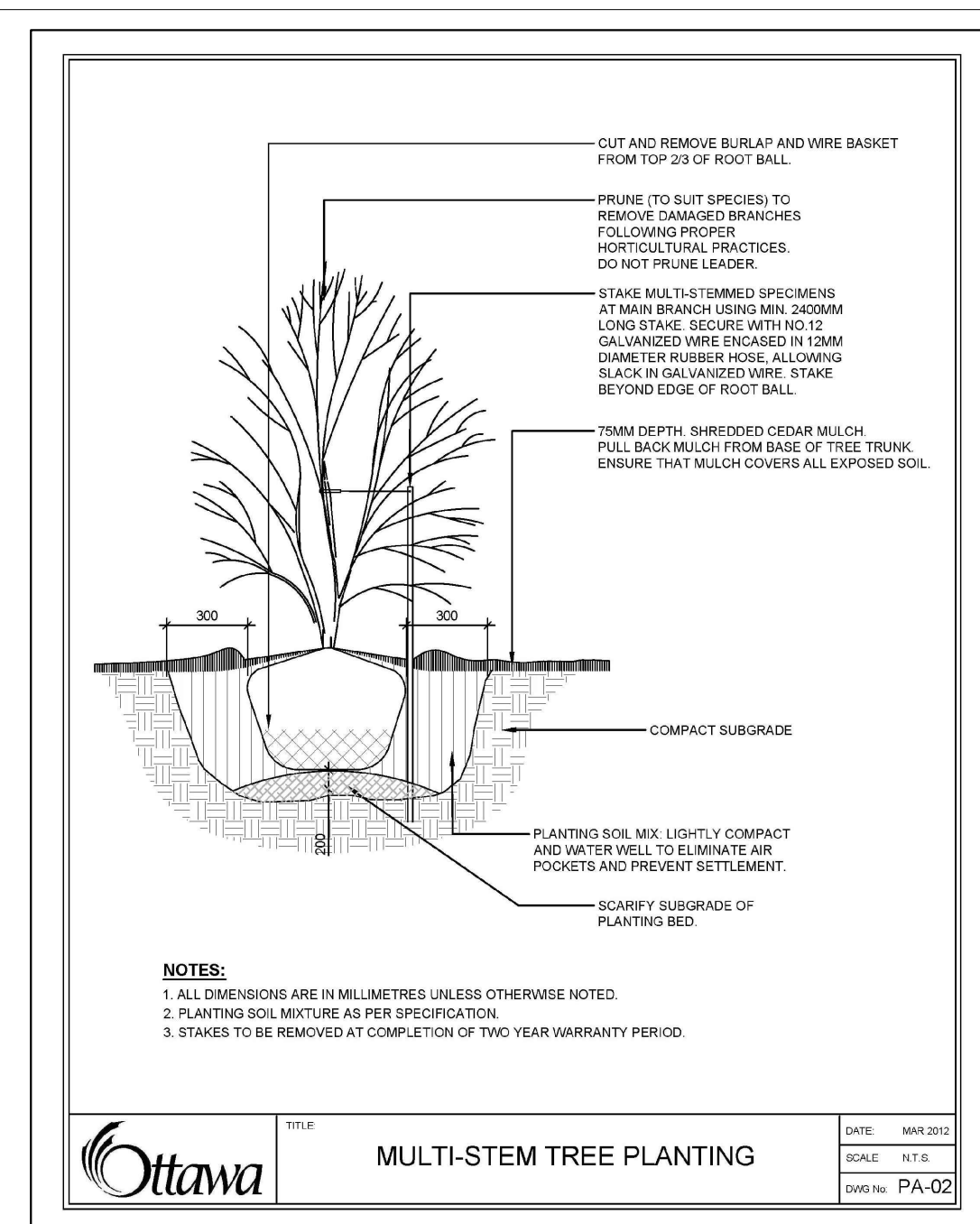
**LANDSCAPE SECTIONS**  
CITY FILE #D07-12-22-0002

SCALE: 1:50  
DRAWN: RM  
CHECKED: WS  
PROJECT NUMBER: 21-029  
DRAWING DATE: 2021-09-30

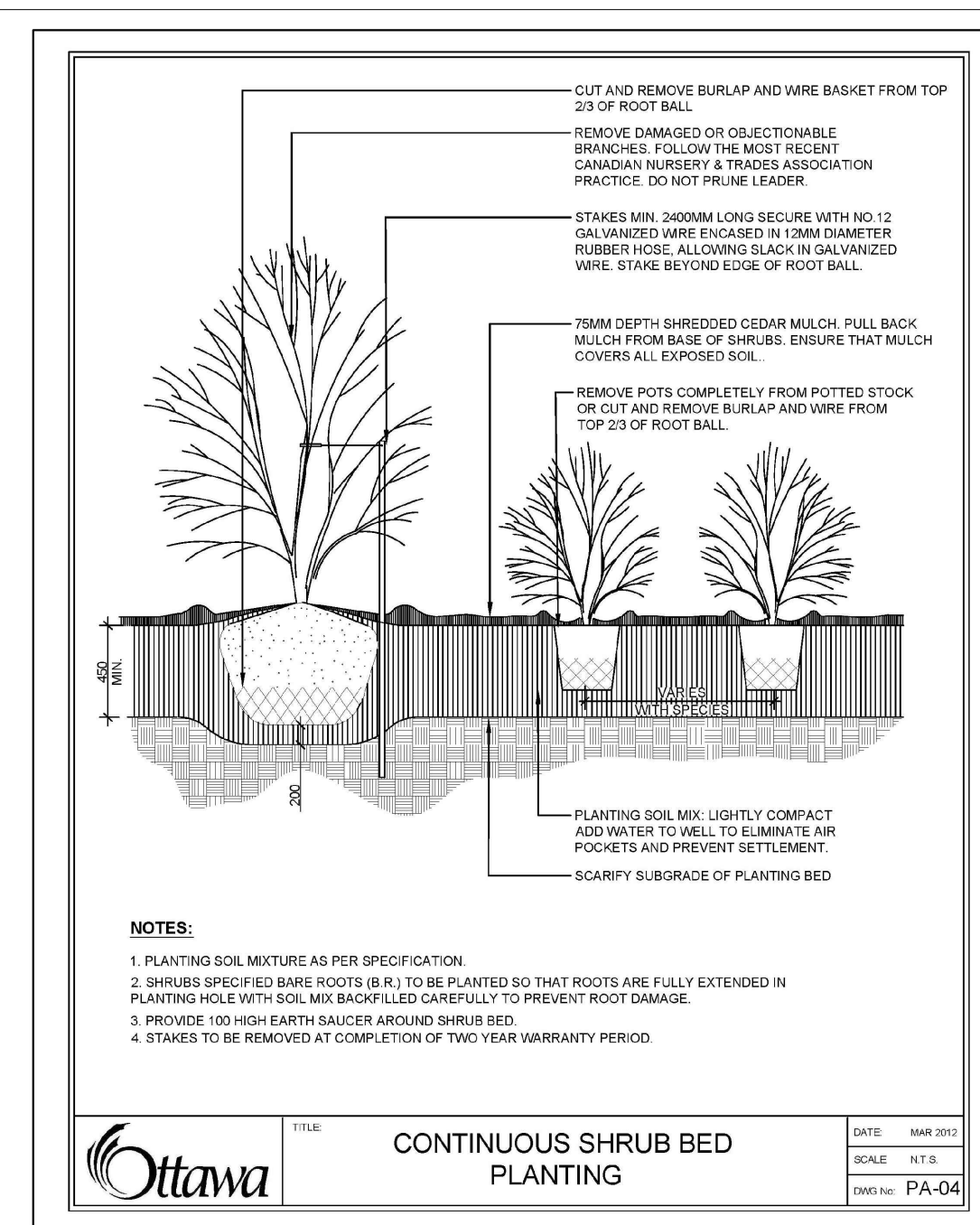
**L400**



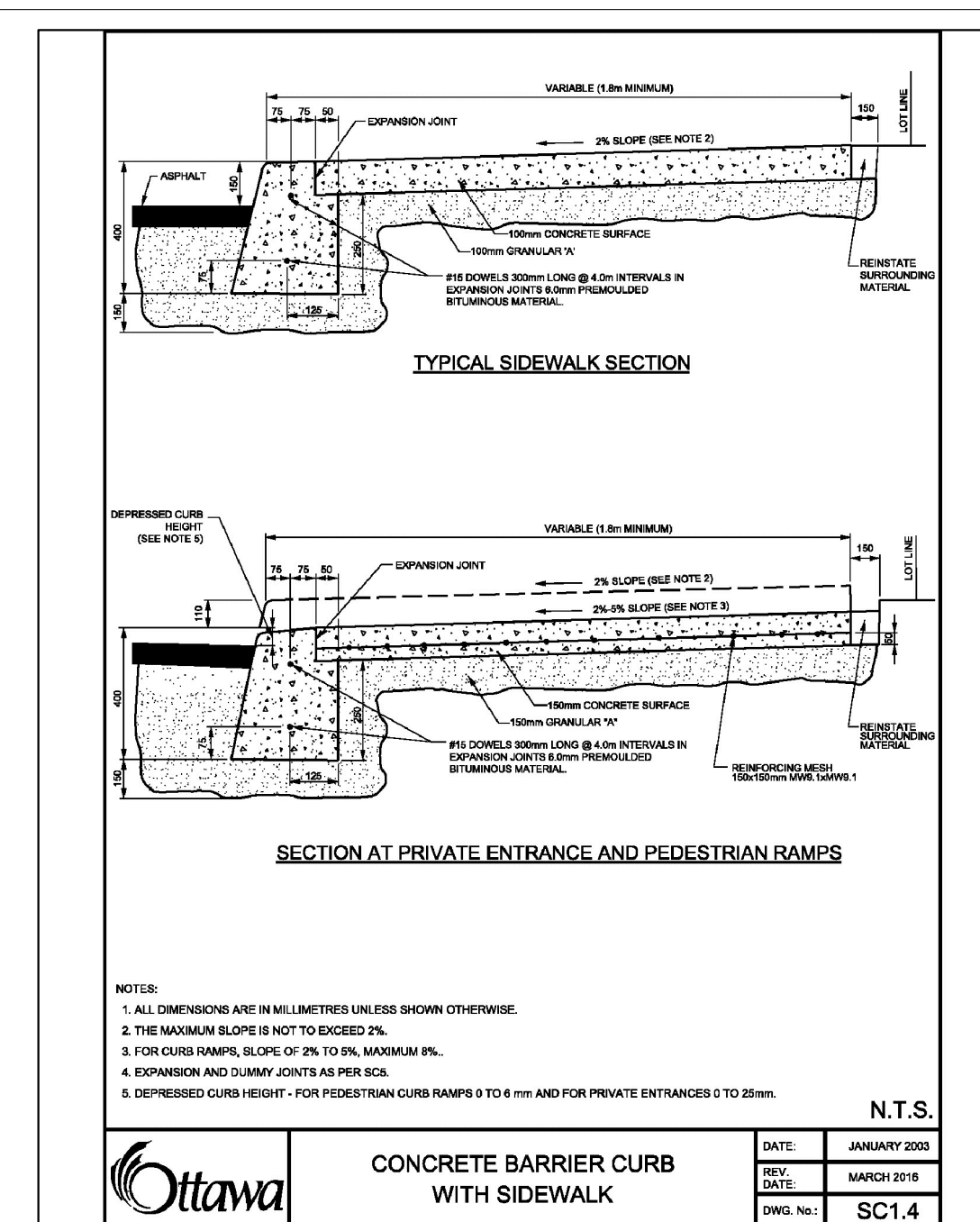
1 DECIDUOUS TREE PLANTING SCALE: N.T.S.



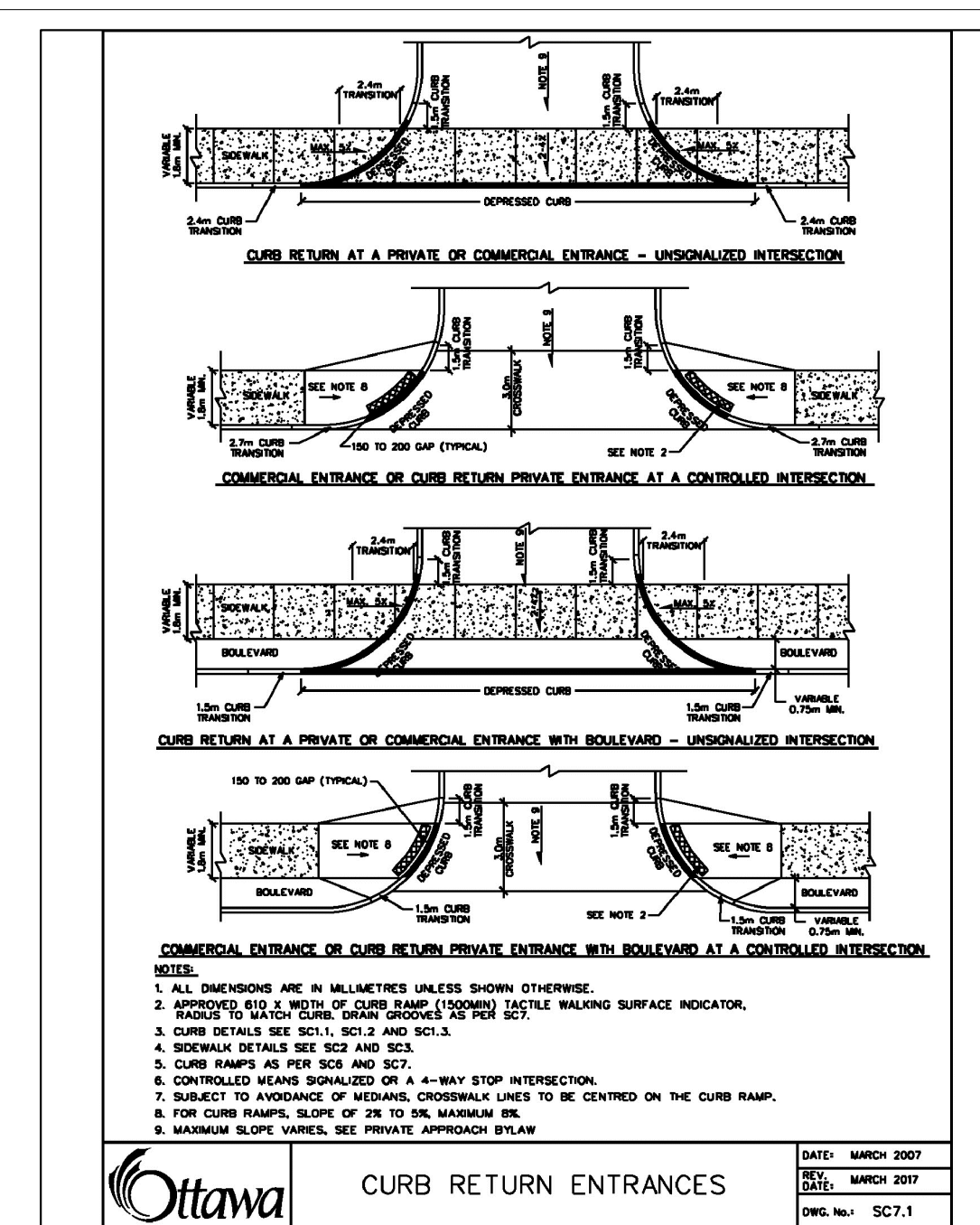
2 MULTI-STEM TREE PLANTING SCALE: N.T.S.



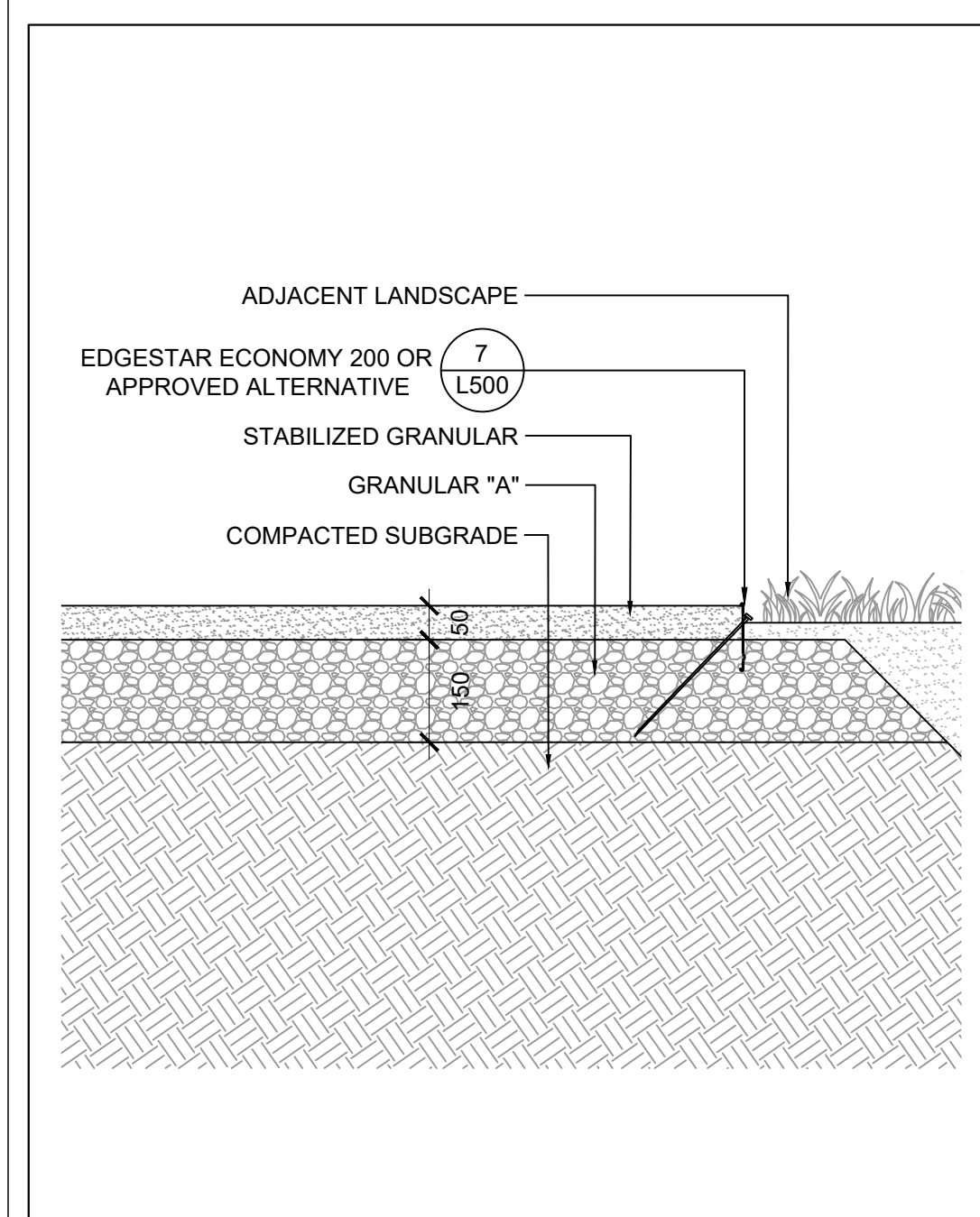
3 SHRUB BED PLANTING SCALE: N.T.S.



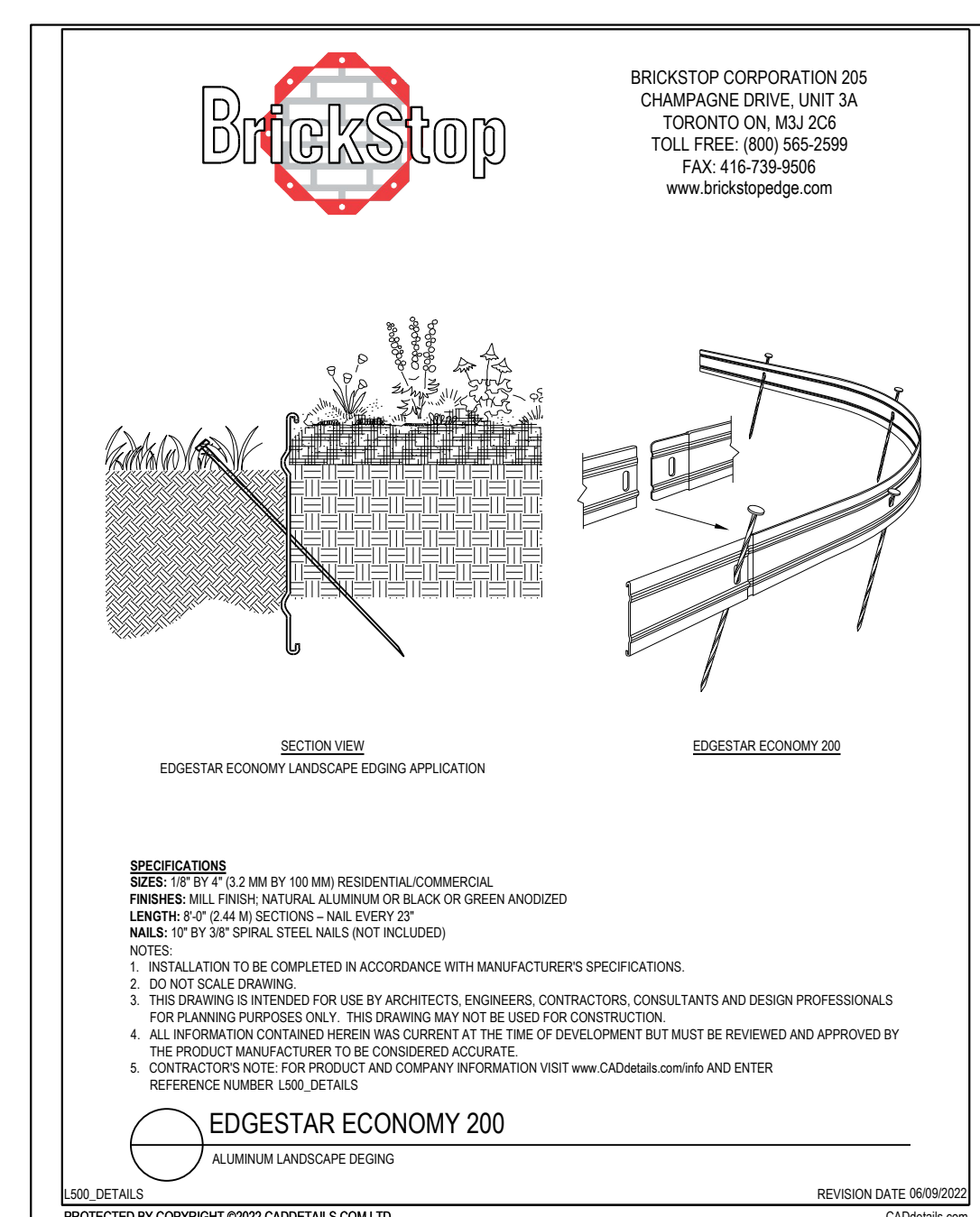
4 CONCRETE BARRIER CURB WITH SIDEWALK SCALE: N.T.S.



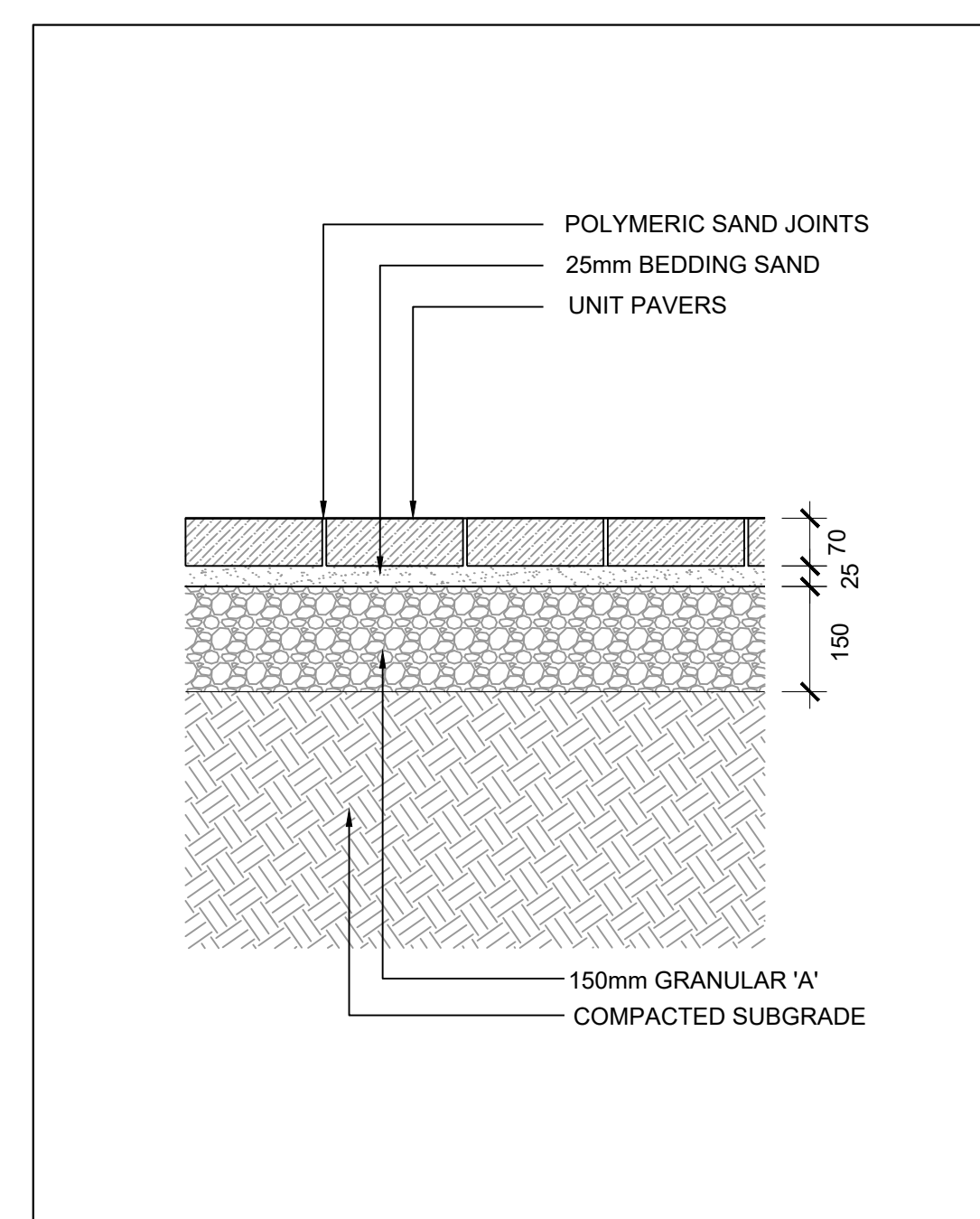
5 CURB RETURN ENTRANCES SCALE: N.T.S.



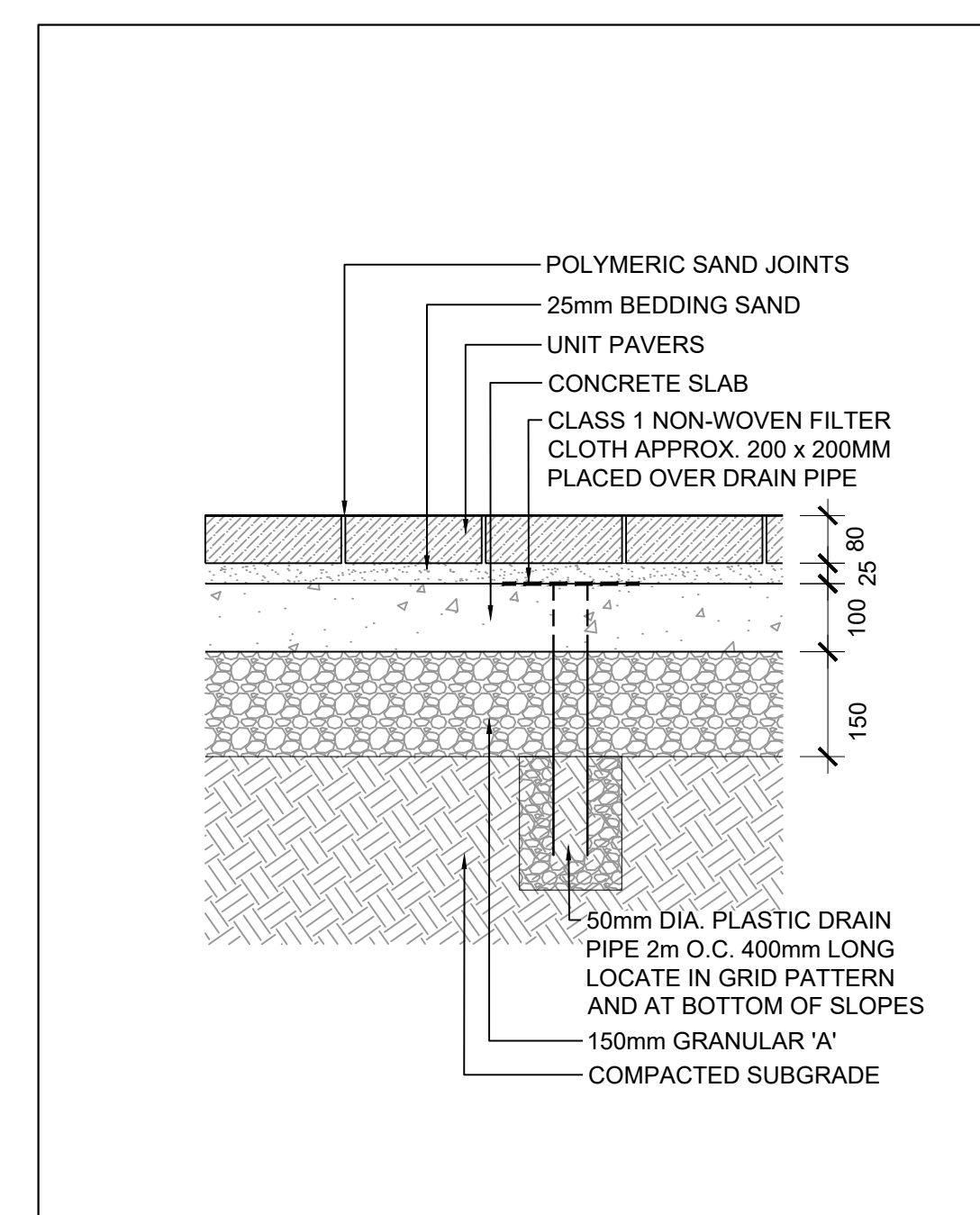
6 STABILIZED GRANULAR PAVING SCALE: 1:10



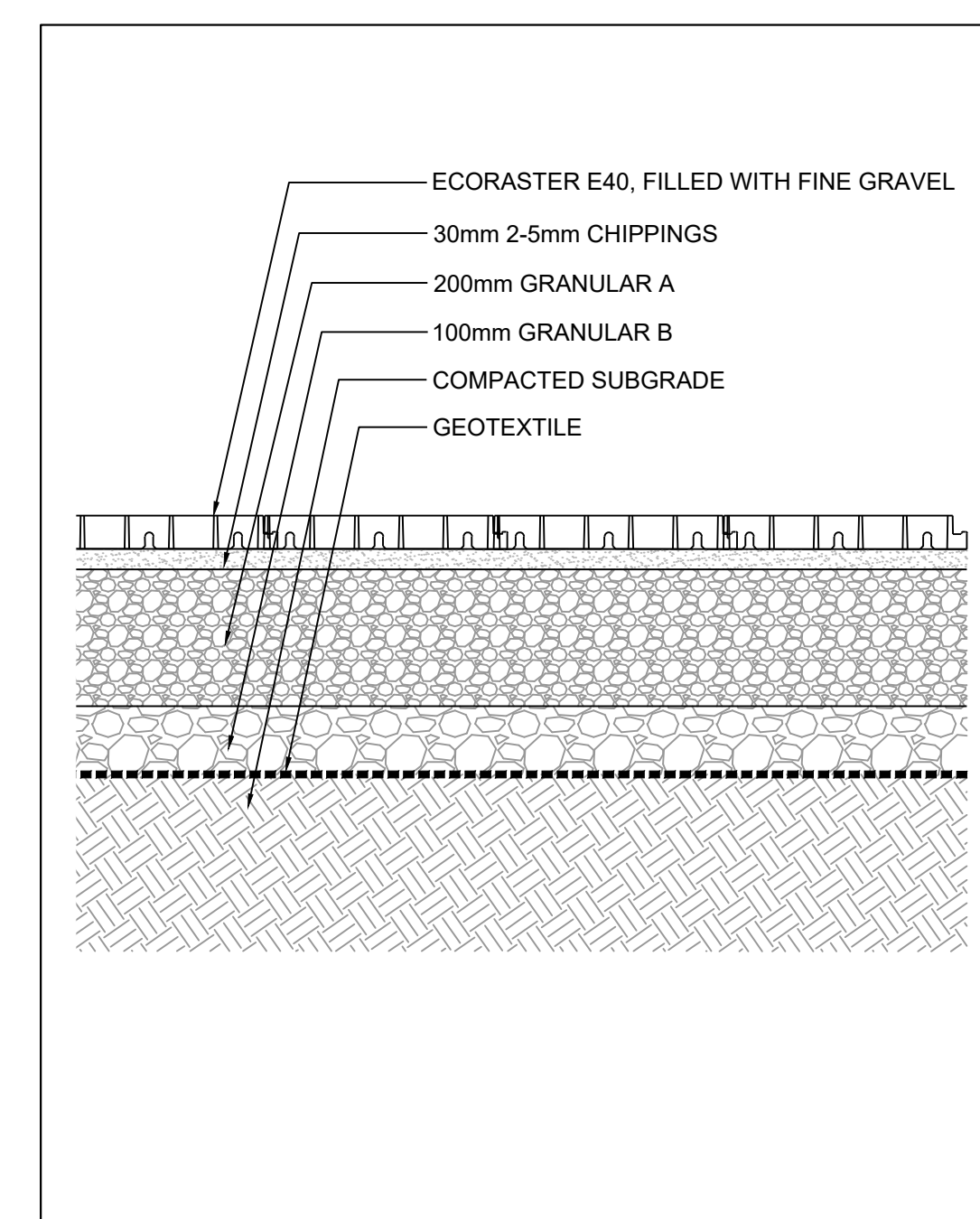
7 EDGESTAR ECONOMY 200 SCALE: N.T.S.



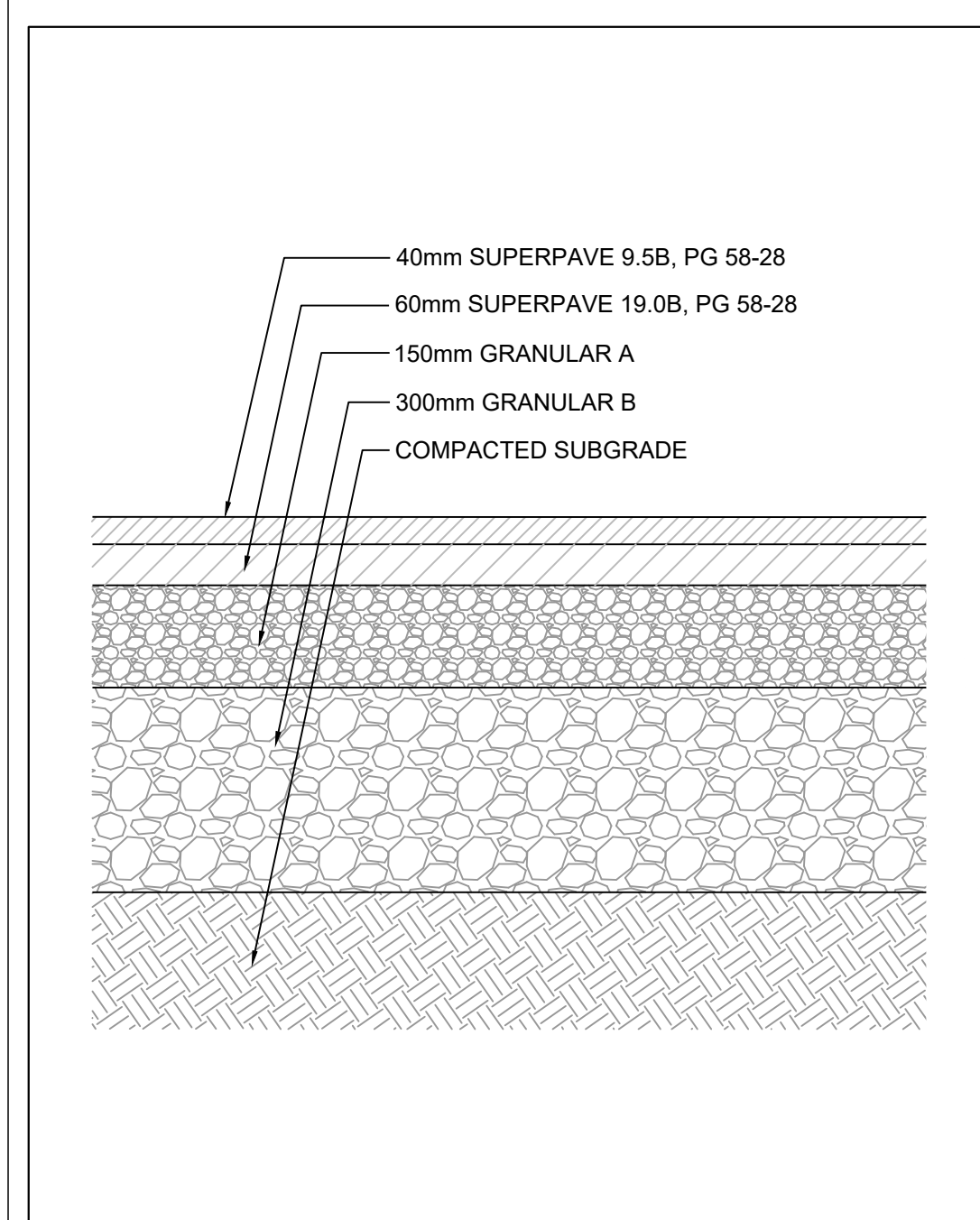
8 PEDESTRIAN UNIT PAVING SCALE: 1:10



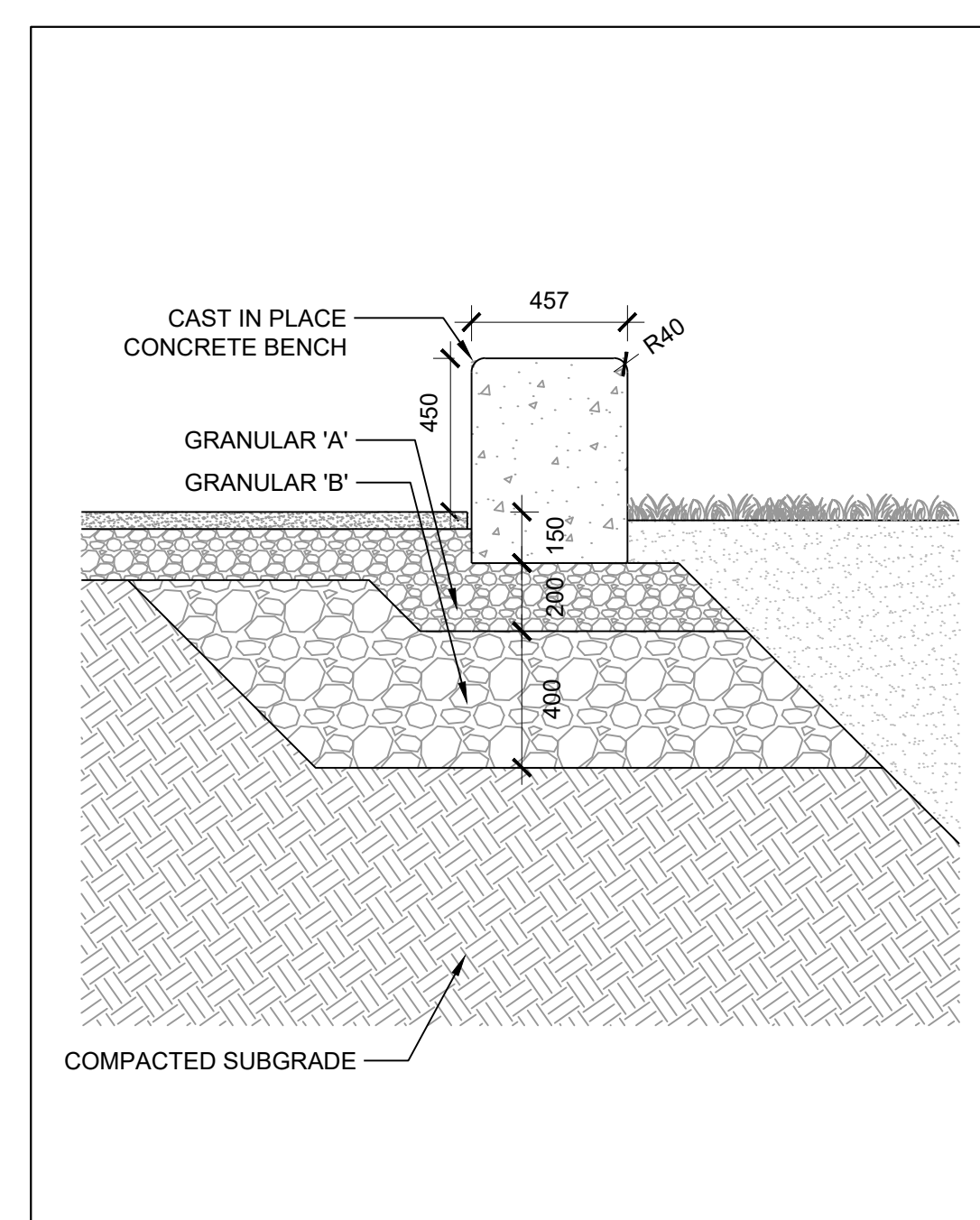
9 VEHICULAR MODULAR UNIT PAVING SCALE: 1:10



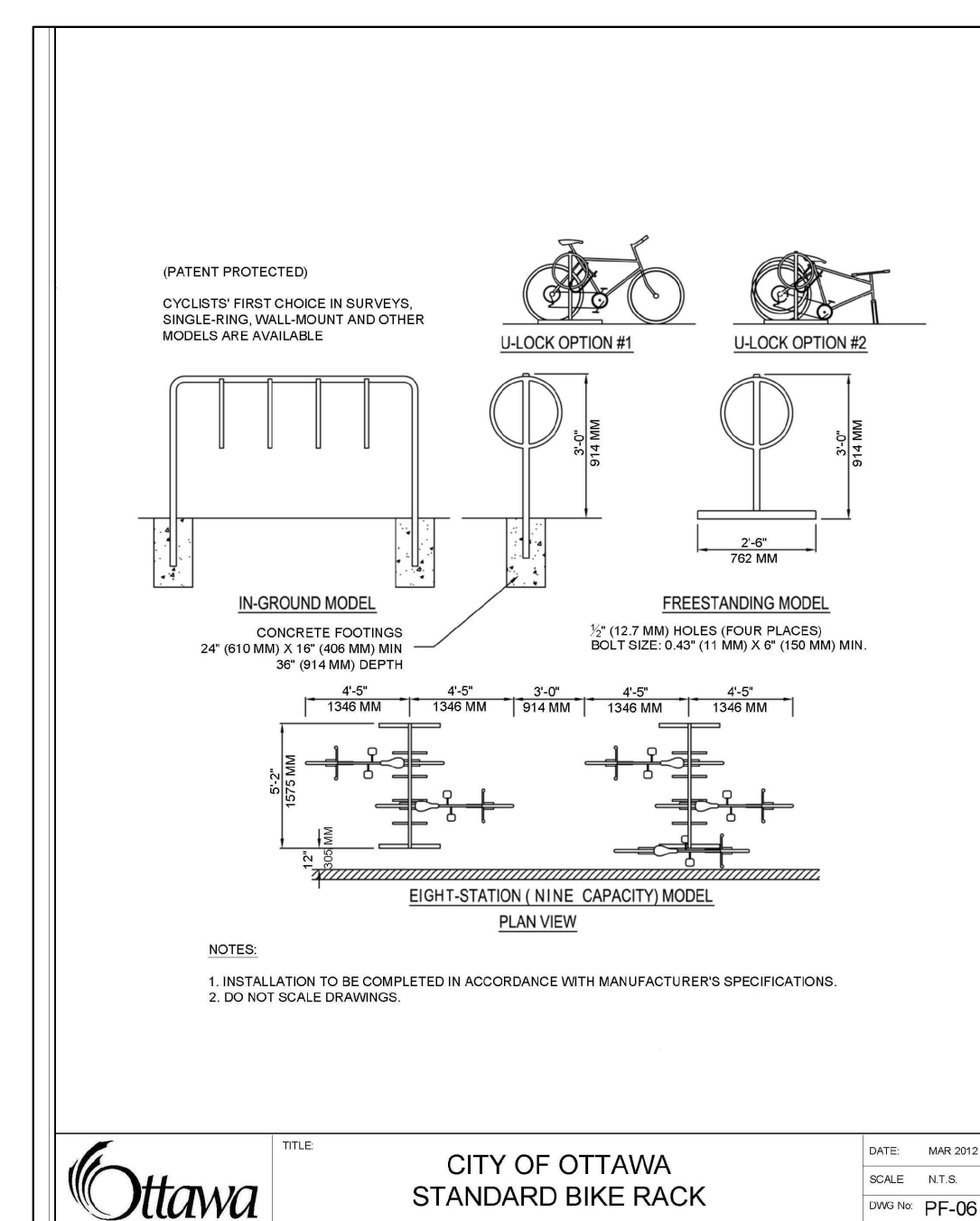
10 CRUSHED STONE IN GEOGRID PARKING SPACE SCALE: 1:10



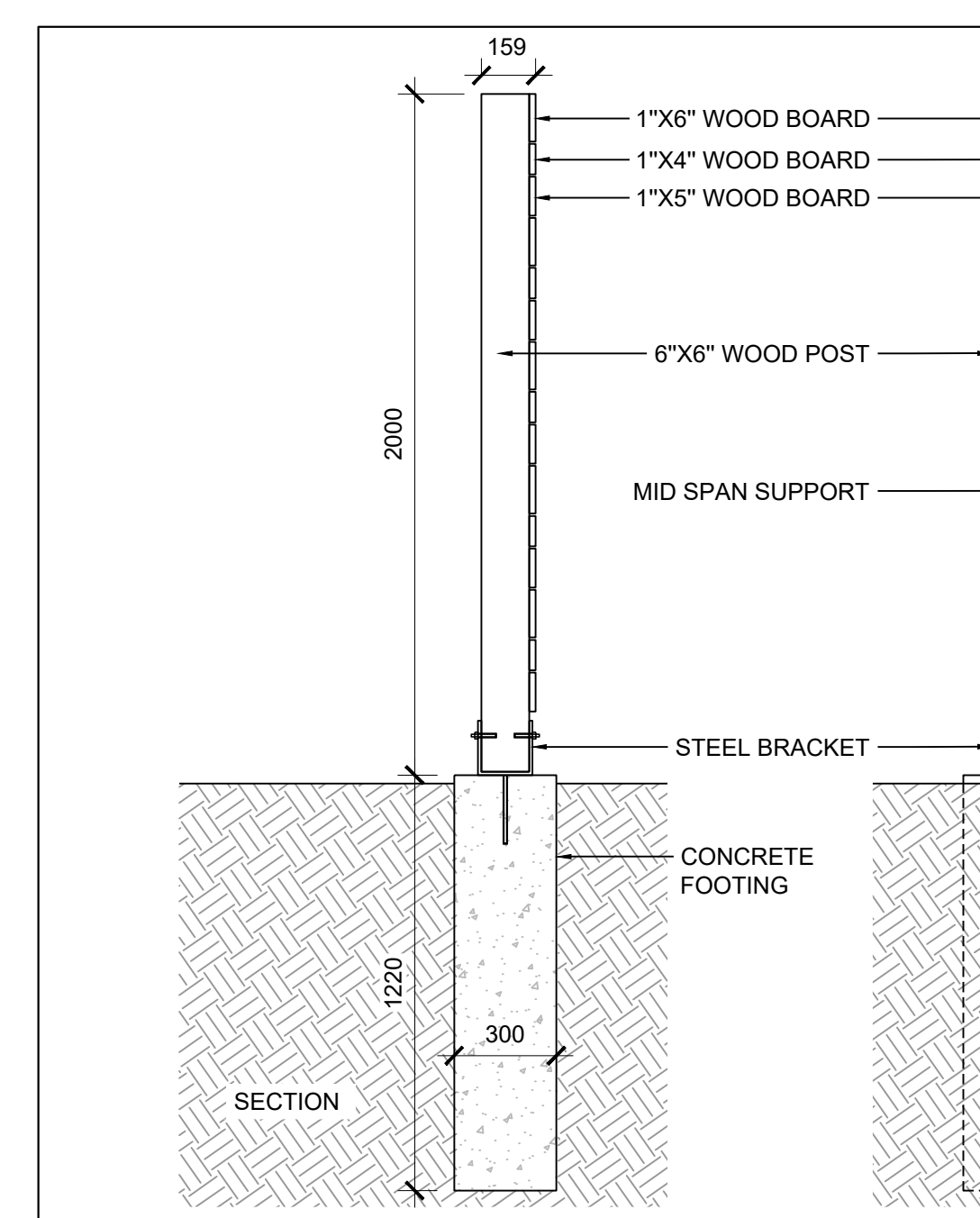
11 SUPERPAVE DRIVING AISLE SCALE: 1:10



12 CONCRETE BENCH SCALE: 1:20



13 BIKE RACK SCALE: N.T.S.



14 SCREEN SCALE: 1:20

**NOTES**

- COPYRIGHT OF THIS DRAWING AND DESIGN IS RESERVED BY THE DESIGNER. THE DRAWING AND ALL ASSOCIATED DOCUMENTS ARE AN INSTRUMENT OF SERVICE BY THE DESIGNER. THE DRAWING AND THE INFORMATION CONTAINED THEREIN MAY NOT BE REPRODUCED IN WHOLE OR IN PART WITHOUT THE PRIOR WRITTEN PERMISSION OF THE DESIGNER.
- DRAWINGS ARE NOT TO BE SCALED FOR CONSTRUCTION.
- IT IS THE CONTRACTOR'S RESPONSIBILITY TO NOTIFY THE CONSULTANT IF ANY DISCREPANCIES IN THE DRAWING AND CONTRACT DOCUMENTS ARE DISCOVERED.
- CONTRACTOR TO VERIFY ALL EXISTING UTILITY LOCATIONS AND DEPTHS PRIOR TO CONSTRUCTION AND NOTIFY LANDSCAPE ARCHITECT IF CONFLICTS ARE PRESENT. IF UTILITY RELOCATIONS ARE REQUIRED DUE TO CONFLICT OR DAMAGE, COORDINATE WITH APPROPRIATE UTILITY OWNERS.

**LEGEND**

**ISSUE**

- 2022-08-31 REISSUED FOR ZBA/SPA
- 2021-11-19 ISSUED FOR ZBA/SPA



**Janet Rosenberg & Studio**

Landscape Architecture and Urban Design  
 416 656 6665 | 416 656 5756 www.jrstudio.ca  
 148 Kenwood Avenue, Toronto Ontario M6C 2S3 Canada

**UNITED PROPERTY RESOURCE CORPORATION**

**QUEENSWOOD UNITED CHURCH**

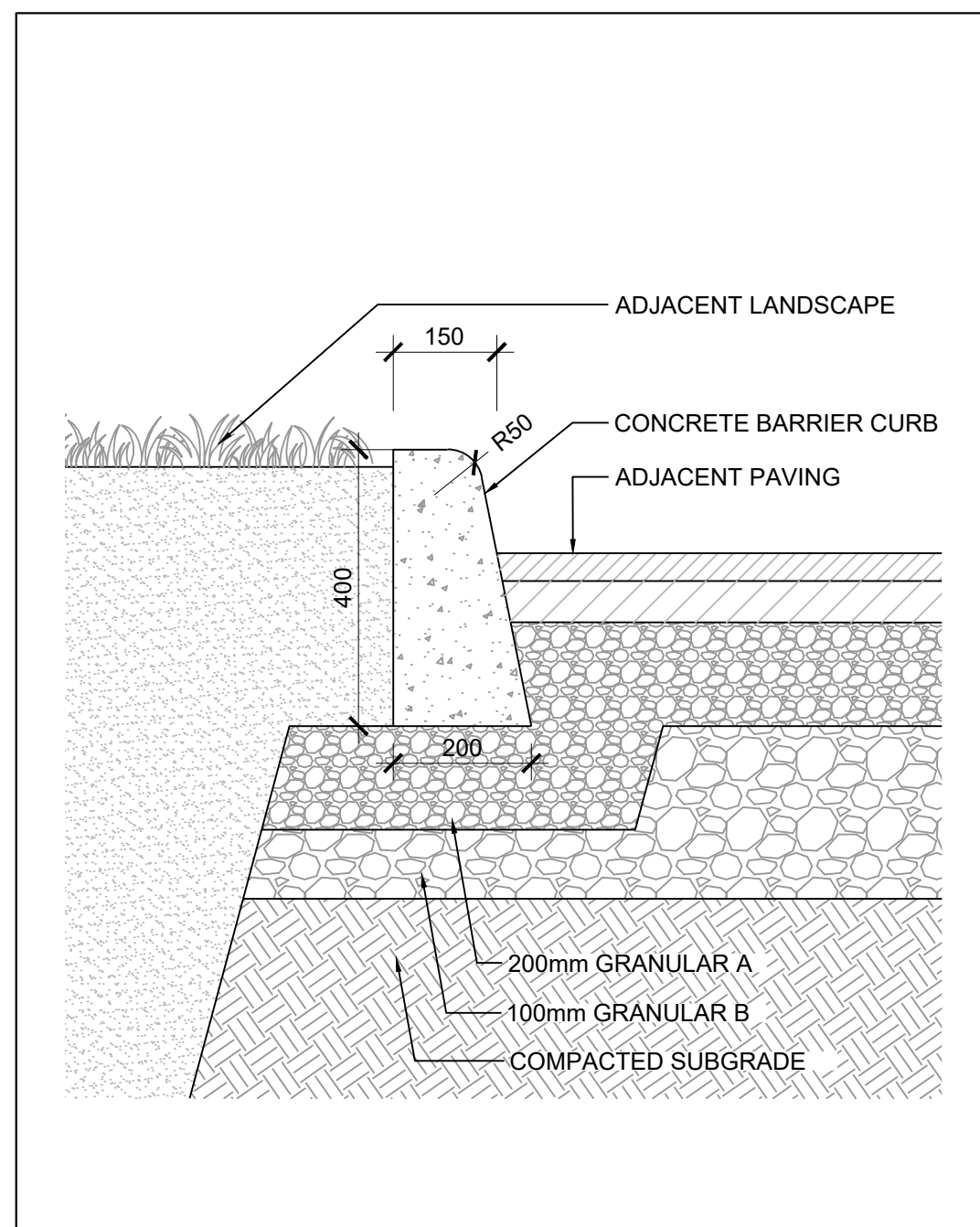
360 KENNEDY LANE EAST, OTTAWA, ONTARIO

**LANDSCAPE DETAILS**  
 CITY FILE #D07-12-22-0002

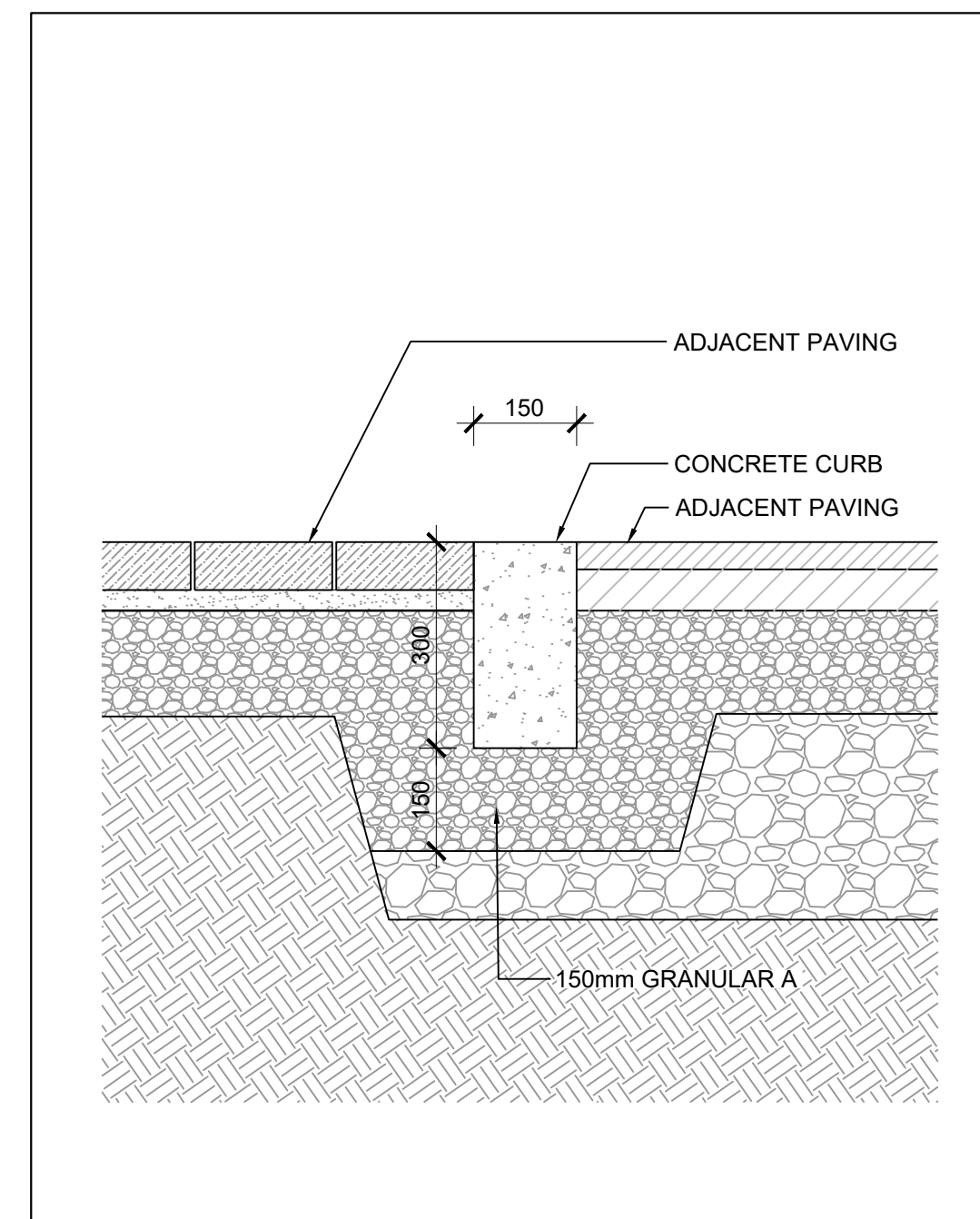
SCALE: VARIES  
 DRAWN: RM  
 CHECKED: WS  
 PROJECT NUMBER: 21-029  
 DRAWING DATE: 2021-09-30

**L500**

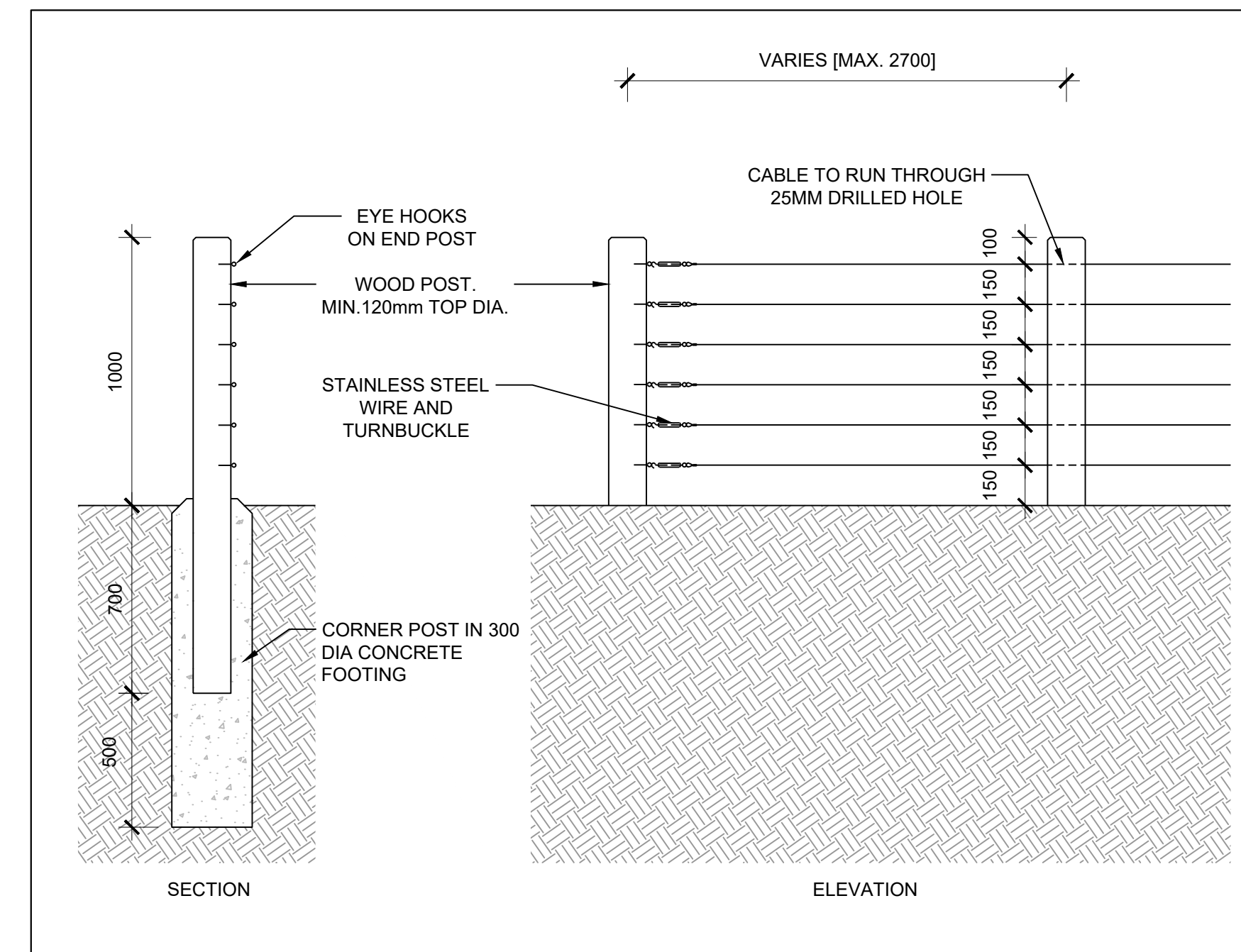




1 RAISED CURB  
SCALE: 1 : 10



2 FLUSH CURB  
SCALE: 1 : 10



3 WIRE AND POST FENCE  
SCALE: 1 : 10

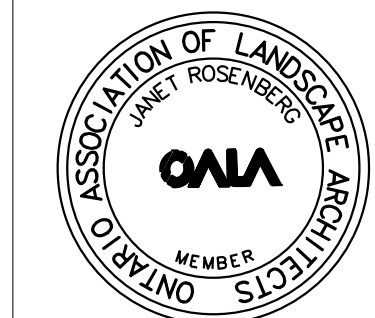
NOTES

1. COPYRIGHT OF THIS DRAWING AND DESIGN IS RESERVED BY THE DESIGNER. THE DRAWING AND ALL ASSOCIATED DOCUMENTS ARE AN INSTRUMENT OF SERVICE BY THE DESIGNER. THE DRAWING AND THE INFORMATION CONTAINED THEREIN MAY NOT BE REPRODUCED IN WHOLE OR IN PART WITHOUT THE PRIOR WRITTEN PERMISSION OF THE DESIGNER.
2. DRAWINGS ARE NOT TO BE SCALED FOR CONSTRUCTION.
3. IT IS THE CONTRACTOR'S RESPONSIBILITY TO NOTIFY THE CONSULTANT IF ANY DISCREPANCIES IN THE DRAWINGS AND CONTRACT DOCUMENTS ARE DISCOVERED.
4. CONTRACTOR TO VERIFY ALL EXISTING UTILITY LOCATIONS AND DEPTHS PRIOR TO CONSTRUCTION AND NOTIFY LANDSCAPE ARCHITECT IF CONFLICTS ARE PRESENT. IF UTILITY RELOCATIONS ARE REQUIRED DUE TO CONFLICT OR DAMAGE, COORDINATE WITH APPROPRIATE UTILITY OWNERS.

LEGEND

ISSUE

- |   |                                 |
|---|---------------------------------|
| 5 |                                 |
| 4 |                                 |
| 3 |                                 |
| 2 | 2022-08-31 REISSUED FOR ZBA/SPA |
| 1 | 2021-11-19 ISSUED FOR ZBA/SPA   |



UNITED PROPERTY  
RESOURCE CORPORATION

QUEENSWOOD UNITED CHURCH

360 KENNEDY LANE EAST, OTTAWA, ONTARIO

LANDSCAPE DETAILS  
CITY FILE #D07-12-22-0002

SCALE: VARIES  
DRAWN: RM  
CHECKED: WS  
PROJECT NUMBER: 21-029  
DRAWING DATE: 2021-09-30

L501