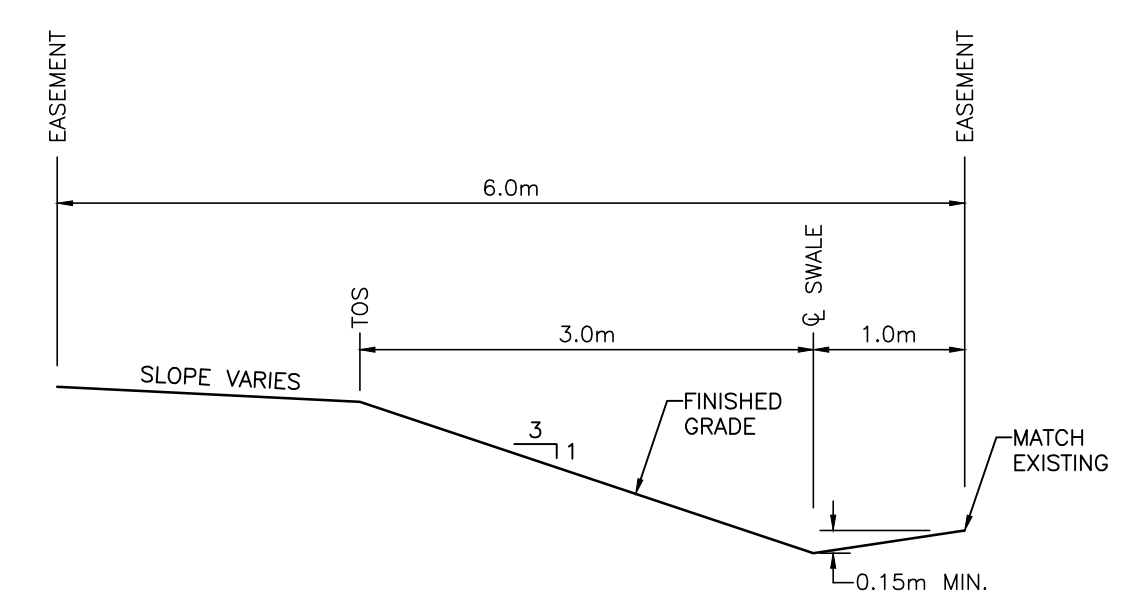
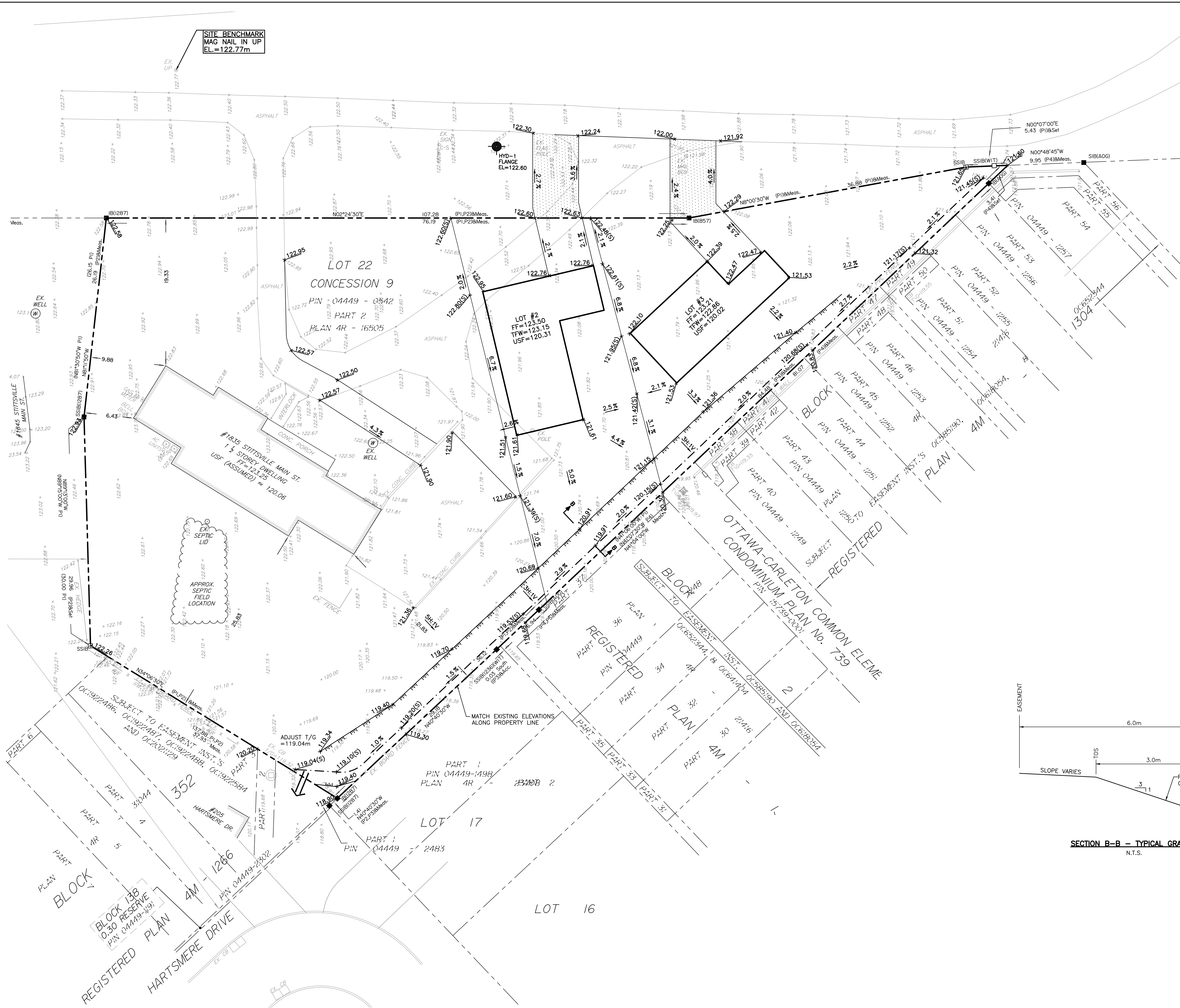


- LEGEND**
- PROPERTY BOUNDARY
 - +121.00 EXISTING ELEVATION
 - 121.00 PROPOSED GRADE
 - 121.00(S) PROPOSED SWALE GRADE
 - 2.0% DRAINAGE DIRECTION AND SLOPE
 - SWALE
 - TERRACING (3H:1V MAX.)
 - HYDRANT
 - MAJOR OVERLAND FLOW ROUTE
- FF: FINISHED FLOOR
TFW: TOP OF FOUNDATION
USF: UNDERSIDE OF FOOTING



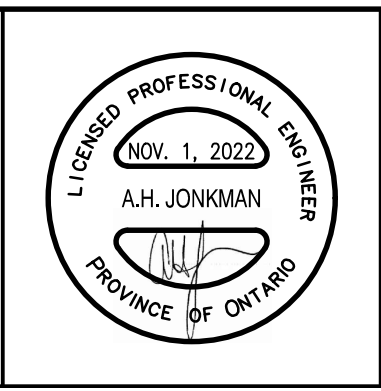
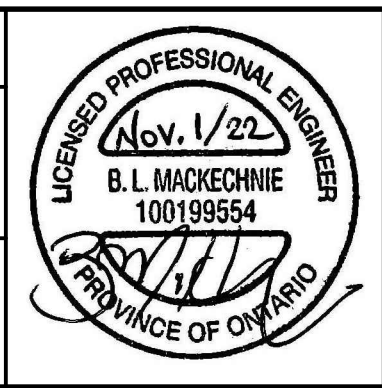
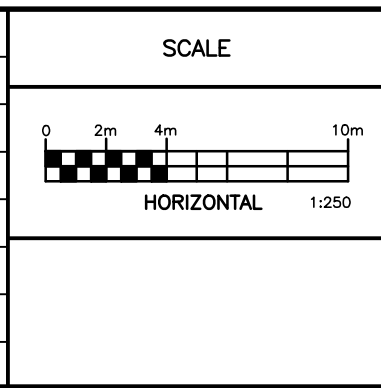
SECTION B-B - TYPICAL GRADING
N.T.S.

NOT FOR CONSTRUCTION

NOTES

THE POSITION OF ALL POLE LINES, CONDUITS, WATERMANS, SEWERS AND OTHER UNDERGROUND AND OVERGROUND UTILITIES AND STRUCTURES IS NOT NECESSARILY SHOWN ON THE CONTRACT DRAWINGS, AND WHERE SHOWN, THE ACCURACY OF THE POSITION OF SUCH UTILITIES AND STRUCTURES IS NOT GUARANTEED. BEFORE STARTING WORK, DETERMINE THE EXACT LOCATION OF ALL SUCH UTILITIES AND STRUCTURES AND ASSUME ALL LIABILITY FOR DAMAGE TO THEM.

NO.	REVISION DESCRIPTION	DATE	BY
3	REVISED PER COMMENTS	01/11/22	AHJ
2	REVISED PER COMMENTS	07/06/22	AHJ
1	ISSUED FOR ZONING BY-LAW AMENDMENT	10/02/22	AHJ



Robinson
Land Development

350 Palladium Drive
Ottawa, ON K2V 1A8
(613) 592-6060 roii.com

DESIGN	BLM
CHECKED	AHJ
DRAWN	BLM
CHECKED	AHJ
APPROVED	AHJ

JENNIFER McGAHAN
WIRE INVESTMENT CORP.

1835 STITTSVILLE MAIN STREET
STITTSVILLE, ON

PROPOSED DEVELOPMENT
CONCEPTUAL GRADING PLAN

PROJECT No.	22008
SURVEY	AOV
DATED	NOVEMBER 2022
DWG. No.	22008-GR1