

WOODRIDGE CRESCENT

(Reference Bearing) N 82° 54' 40" E (N82°54'40" E) (P5, P6, P8, P9)
 PIN 04701 - 0065

465465

PLAN OF SURVEY OF

**PART OF BLOCK A
 REGISTERED PLAN 465465
 CITY OF OTTAWA**

Surveyed by Annis, O'Sullivan, Vollebek Ltd.

Scale 1:250
 0 2.5 5.0 7.5 10 Metres

Metric
 DISTANCES SHOWN ON THIS PLAN ARE IN METRES AND
 CAN BE CONVERTED TO FEET BY DIVIDING BY 0.3048

Surveyor's Certificate

I CERTIFY THAT:
 1. This survey and plan are correct and in accordance with the Surveys Act and the Surveyors Act and the regulations made under them.
 2. The survey was completed on the 22nd day of October, 2021.

Date: Dec 9/21
 Andrew Sheip
 Ontario Land Surveyor

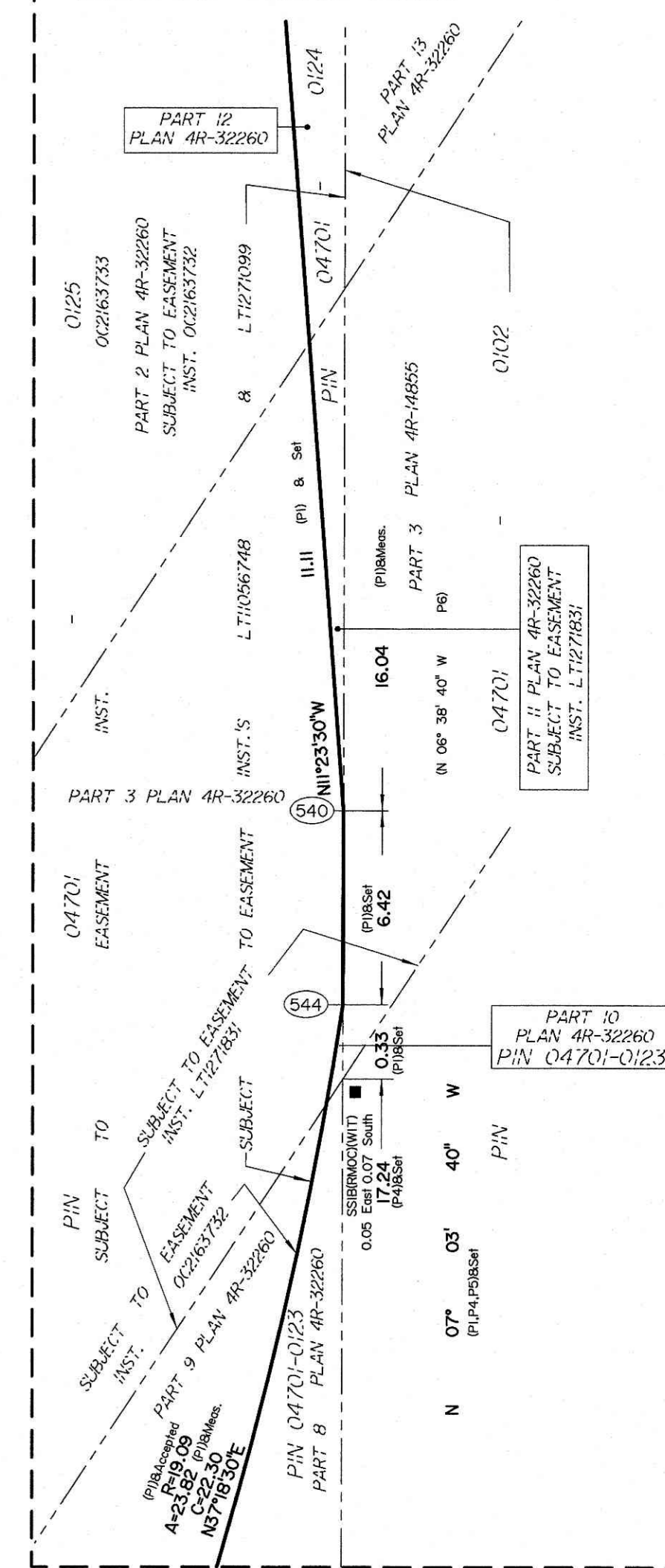
Bearings are grid, derived from the southerly limit of Woodridge Crescent shown to be N82°54'40"E on Plans 4R-13600 and 4R-11988 and are referenced to MTM Zone 9 (76°30' West Longitude) NAD-83 (original).

For comparison purposes, bearings shown on Plan P6 are astronomic bearings.

Coordinates are referenced to MTM Zone 9 (76°30' West Longitude) NAD-83 (original).

COORDINATE TABLE		
POINTNUMBER	NORTHING	EASTING
500	5 023 160.272	358 730.745
505	5 023 170.133	358 810.039
516	5 023 045.128	358 729.006
520	5 023 114.637	358 816.968
521	5 023 118.606	358 816.472
523	5 023 046.015	358 736.110
538	5 023 047.573	358 748.593
540	5 023 081.669	358 803.867
541	5 023 092.559	358 801.673
544	5 023 075.298	358 804.656
545	5 023 055.221	358 783.617
546	5 023 057.562	358 791.141
2016-0190	5 023 074.246	358 862.633

DETAIL Not to Scale



Notes & Legend

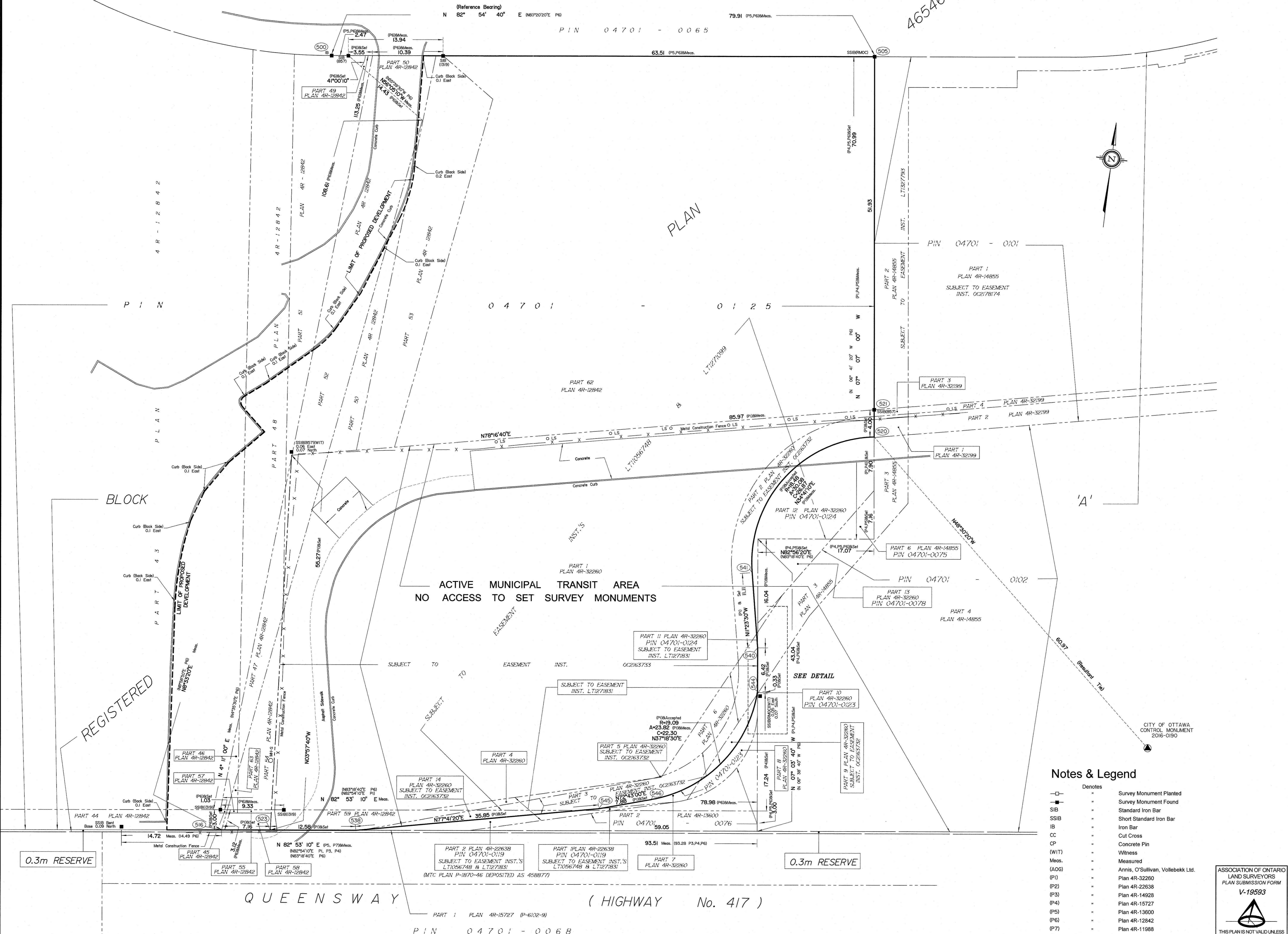
- Denotes
- Survey Monument Planted
 - Survey Monument Found
 - SIB Standard Iron Bar
 - SSIB Short Standard Iron Bar
 - IB Iron Bar
 - CC Cut Cross
 - CP Concrete Pin
 - (WIT) Witness
 - Meas. Measured
 - (AOG) Annis, O'Sullivan, Vollebek Ltd.
 - (P1) Plan 4R-32260
 - (P2) Plan 4R-22638
 - (P3) Plan 4R-14928
 - (P4) Plan 4R-15727
 - (P5) Plan 4R-13600
 - (P6) Plan 4R-12842
 - (P7) Plan 4R-11988
 - o MHS Maintenance Hole (Sanitary)
 - o LS Light Standard

ASSOCIATION OF ONTARIO
 LAND SURVEYORS
 PLAN SUBMISSION FORM
 V-19593

THIS PLAN IS NOT VALID UNLESS
 IT IS AN EMBOSSED ORIGINAL
 COPY ISSUED BY THE SURVEYOR
 In accordance with
 Regulation 1029, Section 29 (3)

© Annis, O'Sullivan, Vollebek Ltd. 2021. THIS PLAN IS PROTECTED BY COPYRIGHT
ANNIS, O'SULLIVAN, VOLLEBEK LTD.
 14 Concourse Gate, Suite 500
 Nepean, Ont. K2E 7S8
 Phone: (613) 727-0850 / Fax: (613) 727-1079
 Email: nepean@aosvl.com

Ontario
 Land Surveyors
 Reg. No. 2230-21, Fee Schedule P.B. A. 465465 D. 04



0.3m RESERVE

0.3m RESERVE

QUEENSWAY (HIGHWAY No. 417)

PIN 04701 - 0068