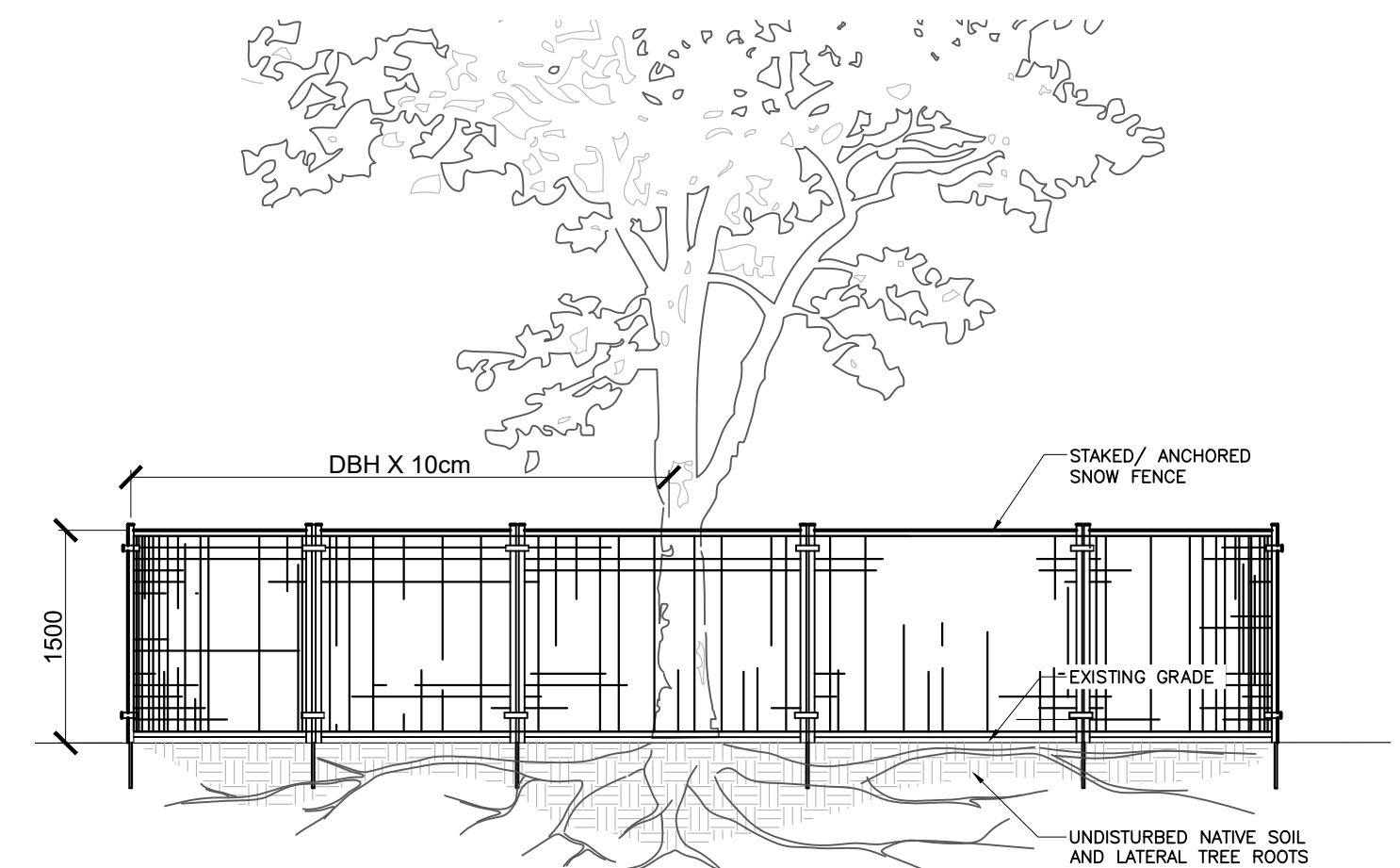


- LEGEND - EXISTING CONDITIONS:**
- SITE PROPERTY LINE
 - 00 TREE IDENTIFICATION NUMBER
 - CRITICAL ROOT ZONE (CRZ)
 - ☼ EXISTING TREE
 - TREE PROTECTION FENCING

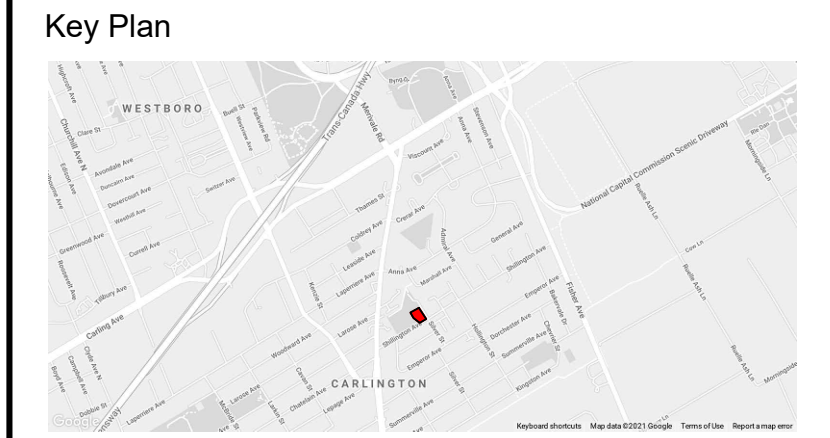
1 EXISTING CONDITIONS Scale: 1:200



- NOTES:**
THE FOLLOWING PROTECTION MEASURES MUST BE IMPLEMENTED FOR RETAINED TREES, BOTH ON SITE AND ADJACENT SITES, PRIOR TO ANY TREE REMOVAL OR SITE WORKS AND MAINTAINED FOR THE DURATION OF CONSTRUCTION ON SITE.
1. ERECT A FENCE AT THE CRITICAL ROOT ZONE (CRZ) OF TREES WHERE THE CRZ IS ESTABLISHED AS BEING 10 CENTIMETERS FROM THE TRUNK FOR EVERY CENTIMETER OF TRUNK DIAMETER AT BREAST HEIGHT. THE CRZ IS CALCULATED AS DBH X 10cm.
 2. DO NOT PLACE ANY MATERIAL OR EQUIPMENT WITHIN THE CRZ OF THE TREE
 3. DO NOT ATTACH ANY SIGNS, NOTICES OR POSTERS TO ANY TREE
 4. DO NOT RAISE OR LOWER THE GRADE WITHIN THE CRZ WITHOUT APPROVAL
 5. TUNNEL OR BORE WHEN DIGGING WITHIN THE CRZ OF A TREE
 6. DO NOT DAMAGE THE ROOT SYSTEM, TRUNK, OR BRANCHES OF ANY TREE
 7. ENSURE THAT EXHAUST FUMES FROM ALL EQUIPMENT ARE NOT DIRECTED TOWARDS ANY TREE CANOPY

2 TREE PROTECTION FENCING Scale: 1:300

- NOTES:**
- 1.0 THE EXISTING PROPERTY IS LOCATED AT THE NORTH-WEST CORNER OF THE SHILLINGTON AVENUE AND SILVER STREET INTERSECTION. THE SITE CURRENTLY CONTAINS FOUR SINGLE STOREY HOMES AND ACCESSORY GARAGES AND SHEDS. THE SITE HAS FLAT TOPOGRAPHY. EXISTING VEGETATION IS PRIMARILY COMPRISED OF A VARIETY OF MAPLE TREE SPECIES. THE ADJACENT PARK PROPERTY HAS A MORE DIVERSE COLLECTION OF TREE SPECIES, SUCH AS PINE, MAPLE AND OAK.
 - APPROXIMATELY 1100 m² TO BE COVERED BY THE PROPOSED BUILDING FOOTPRINT.
 - APPROXIMATELY 600 m² TO BE HARD SURFACES.
 - 2.0 THE PROPOSED DEVELOPMENT REQUIRES THE REMOVAL OF TWENTY-THREE (23) TREES.
 - 3.0 DUE TO THE SET BACK LIMITS FOR TREE PLANTING IDENTIFIED IN THE GEOTECHNICAL REPORT (DATED 18TH FEB 2022), IT IS NOT POSSIBLE TO PROVIDE ANY NEW TREE PLANTING ON THIS SITE. A NUMBER OF LARGE SHRUBS HAVE BEEN PROPOSED SUCH AS STAGHORN SUMAC OR COMMON LILAC.
 - 4.0 FOR RETAINED TREES:
 - ERECT A FENCE AT THE CRITICAL ROOT ZONE (CRZ) OF TREES;
 - DO NOT PLACE ANY MATERIAL OR EQUIPMENT WITHIN THE CRZ OF THE TREE;
 - DO NOT ATTACH ANY SIGNS, NOTICES OR POSTERS TO ANY TREE;
 - DO NOT RAISE OR LOWER THE EXISTING GRADE WITHIN THE CRZ WITHOUT APPROVAL;
 - TUNNEL OR BORE WHEN DIGGING WITHIN THE CRZ OF A TREE
 - DO NOT DAMAGE THE ROOT SYSTEM, TRUNK OR BRANCHES OF ANY TREE;
 - ENSURE THAT EXHAUST FUMES FROM ALL EQUIPMENT ARE NOT DIRECTED TOWARDS ANY TREE'S CANOPY.



No.	Revision	Date
2	ISSUED FOR RE-ZONING	23 FEB 2022
1	ISSUED FOR REVIEW	25 JAN 2022

North:

Stamp:

CSW Landscape Architecture
Urban Design
Site Planning
Recreation and Park Planning
Project Management

319 McRae Avenue, Suite 502, Ottawa, Ontario, K1Z 0B9
Tel: (613) 729-4536

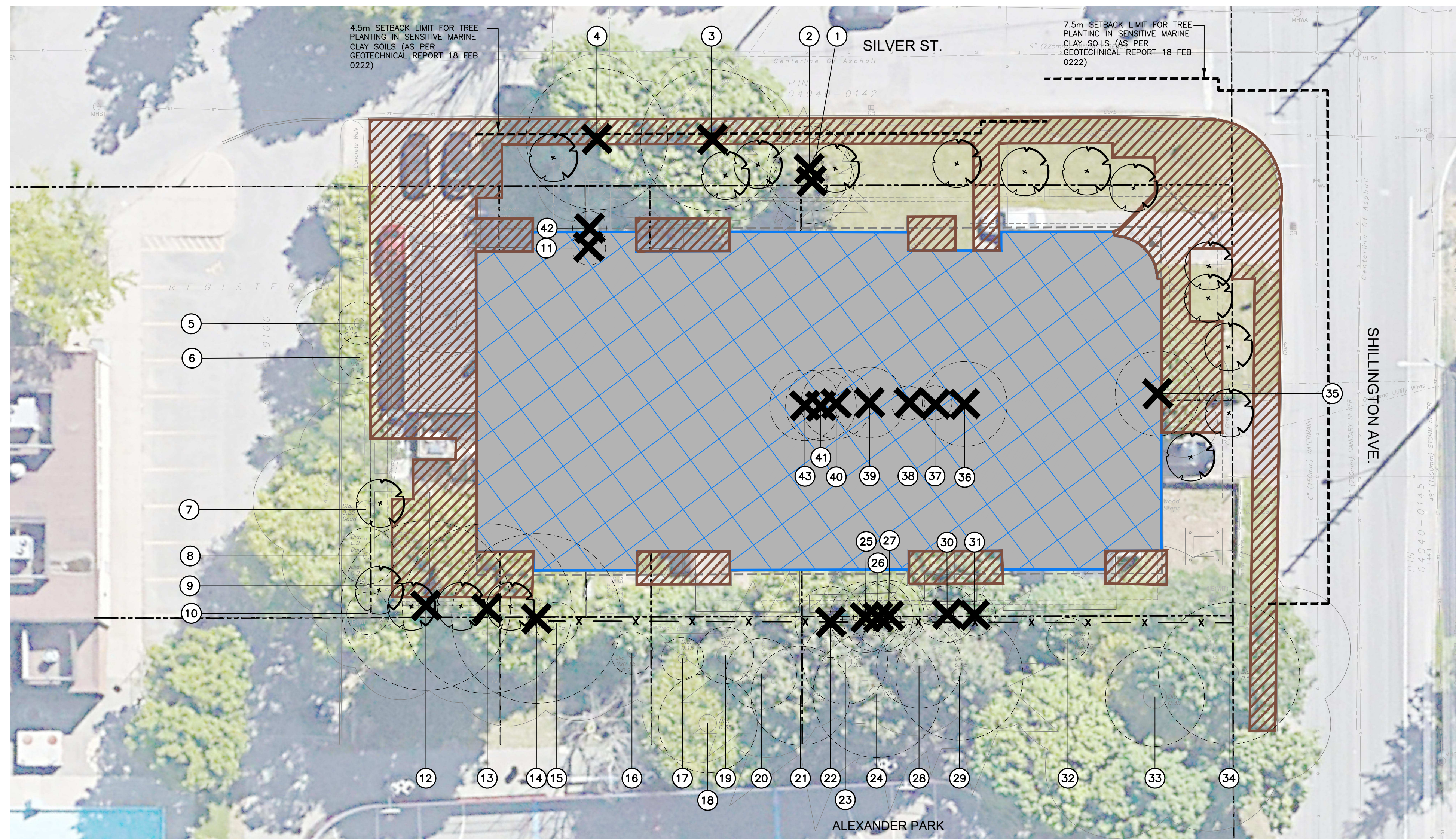
1. All measurements in millimeters unless specified otherwise. Do not scale drawing. All drawings to be read in conjunction with written specifications.
2. Copyright reserved. This drawing is the exclusive property of CSW Landscape Architects Ltd. and shall not be used without the consent thereof.
3. This Drawing may not be used for construction until signed by the landscape architect. It is the responsibility of the contractor to:
 - check and verify all dimensions on site;
 - report all errors and/or omissions to the landscape architect;
 - comply with all pertinent codes and by-laws;
 - check and verify locations of all underground services with all local utilities prior to any digging.

Project:
1275 SHILLINGTON AVENUE
OTTAWA., ONTARIO

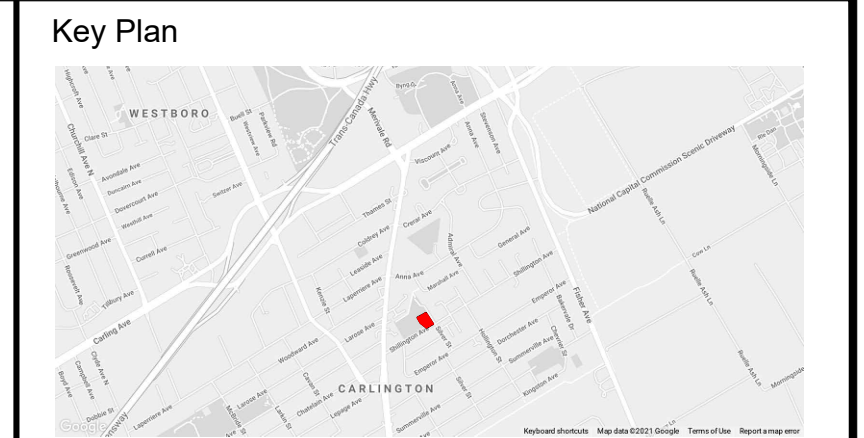
Drawing:
TREE INFORMATION REPORT

Scale: 1:200	Date:
Design By: PG	Drawn By: PG
Project Number: 2112-01	Sheet Number: TIR 01

Last Saved: 2022/03/23 1:45:59 PM
 File Location: Z:\Projects\2112-01_Shillington_Ave_Silver\Drawings\TIR\2112-01_Shillington_Silver_TIR01(TreeInformationReport).dwg



- LEGEND - PROPOSED DEVELOPMENT:**
- SITE PROPERTY LINE
 - TREE IDENTIFICATION NUMBER
 - CRITICAL ROOT ZONE
 - x - TREE PROTECTION FENCING
 - ✕ TREE TO BE REMOVED
 - ▭ PROPOSED BUILDING
 - ▨ PROPOSED HARD SURFACES
 - PROPOSED LARGE SHRUB
 - SET BACK LIMIT FOR TREE PLANTING IN SENSITIVE MARINE CLAY SOILS (AS PER GEOTECHNICAL REPORT 18TH FEB 2022)



No.	Revision	Date
2	ISSUED FOR RE-ZONING	23 FEB 2022
1	ISSUED FOR REVIEW	25 JAN 2022

North:

Stamp:

CSW Landscape Architecture
Urban Design
Site Planning
Recreation and Park Planning
Project Management

319 McRae Avenue, Suite 502, Ottawa, Ontario, K1Z 0B9
Tel: (613) 729-4536

- All measurements in millimeters unless specified otherwise. Do not scale drawing. All drawings to be read in conjunction with written specifications.
- Copyright reserved. This drawing is the exclusive property of CSW Landscape Architects Ltd. and shall not be used without the consent thereof.
- This Drawing may not be used for construction until signed by the landscape architect. It is the responsibility of the contractor to:
 - check and verify all dimensions on site;
 - report all errors and/or omissions to the landscape architect;
 - comply with all pertinent codes and by-laws;
 - check and verify locations of all underground services with all local utilities prior to any digging.

Project:
1275 SHILLINGTON AVENUE
OTTAWA, ONTARIO

Drawing:
TREE INFORMATION REPORT

Scale: 1:200	Date:
Design By: PG	Drawn By: PG
Project Number: 2112-01	Sheet Number: TIR 02

1 PROPOSED DEVELOPMENT

Scale: 1:200

Tree #	Botanical Name	Common Name	DBH (cm)	Ownership	Condition	Comments	Arborist Recommendation	Removal Reason
1	Thuja occidentalis	Eastern White Cedar	30	City	Good	Asymmetrical canopy, Single stem.	Remove	Construction
2	Thuja occidentalis	Eastern White Cedar	30	City	Moderate	Asymmetrical canopy, Single stem, Die-back =15% @ canopy.	Remove	Construction
3	Acer platanoides	Norway Maple	50	City	Moderate	Symmetrical canopy, Single stem, Pruned limbs @ O.H Utilities, Broken limbs, Bark rot @ trunk	Remove	Construction
4	Acer platanoides	Norway Maple	50	City	Good	Asymmetrical canopy, Single stem, Co-dominant leaders: 2@=3m above grade, Included bark.	Remove	Construction
5	Acer negundo	Manitoba Maple	15	City	Moderate	Asymmetrical canopy, Single stem, Pruned limbs, Grown into fence.	Remain	
6	Ulmus spp.	Elm	15	City	Moderate	Symmetrical canopy, single stem, Co-dominant leaders: 2@=4m above grade.	Remain	
7					Dead		Remain	
8	Acer negundo	Manitoba Maple	20	City	Poor	Asymmetrical canopy, Single stem, Broken limbs, Pruned leader, Poor branch angle.	Remain	
9					Dead		Remain	
10	Acer negundo	Manitoba Maple	15	City	Poor	Asymmetrical canopy, Single stem, Pruned leader, Bark rot @ limbs, Grown into fence.	Remain	
11	Thuja occidentalis	Eastern White Cedar	2 @ 15	Private	Good	Asymmetrical canopy, Multi-stem: 2.	Remove	Construction
12	Acer negundo	Manitoba Maple	60	Private	Moderate	Asymmetrical canopy, Single stem, Co-dominant leaders: 2@=3m above grade, Poor branch angle.	Remove	Construction
13	Acer negundo	Manitoba Maple	60	Private	Moderate	Asymmetrical canopy, Single stem, Pruned limbs, Leaning.	Remove	Construction
14	Acer negundo	Manitoba Maple	60	Boundary	Moderate	Asymmetrical canopy, Single stem.	Remove	Construction
15	Acer negundo	Manitoba Maple	2 @ 15	City	Poor	Asymmetrical canopy, Co-dominant leaders: 2@0m above grade.	Remain	
16	Tilia cordata	Little-Leaf Linden	3 @ 20	City	Moderate	Symmetrical canopy, Multi-stem: 3, Broken limbs.	Remain	
17	Acer platanoides	Norway Maple	15	City	Good	Asymmetrical canopy, Single stem, Included bark.	Remain	
18	Acer saccharum	Sugar Maple	35	City	Good	Asymmetrical canopy, Single stem, Pruned limbs, Bark rot @limbs.	Remain	
19	Acer negundo	Manitoba Maple	20	City	Moderate	Asymmetrical canopy, Single stem, Leaning.	Remain	
20	Pinus nigra	Austrian Pine	25	City	Moderate	Symmetrical canopy, Single stem, Pruned: limbed-up.	Remain	
21	Pinus nigra	Austrian Pine	35	City	Good	Asymmetrical canopy, Single stem, Pruned: limbed-up.	Remain	
22	Acer negundo	Manitoba Maple	25	City	Poor	Asymmetrical canopy, Single stem, Pruned limbs, Grown into fence.	Remove	Construction
23	Pinus nigra	Austrian Pine	30	City	Good	Asymmetrical canopy, Single stem, Die-back =5% @ canopy, Pruned: limbed-up.	Remain	
24	Pinus nigra	Austrian Pine	45	City	Good	Asymmetrical canopy, Single stem, Pruned limbs.	Remain	

Tree #	Botanical Name	Common Name	DBH (cm)	Ownership	Condition	Comments	Arborist Recommendation	Removal Reason
25	Acer negundo	Manitoba Maple	15	Boundary	Poor	Asymmetrical canopy, Single stem, Broken limbs, Grown into fence.	Remove	Construction
26	Acer negundo	Manitoba Maple	15	Boundary	Poor	Asymmetrical canopy, Single stem, Broken limbs, Leaning.	Remove	Construction
27	Acer negundo	Manitoba Maple	2 @ 20	Boundary	Moderate	Asymmetrical canopy, Single stem, Co-dominant leaders: 2@=3m above grade, Broken limbs, Heart rot @ crotches.	Remove	Construction
28	Pinus nigra	Austrian Pine	30	City	Good	Symmetrical canopy, single stem, Co-dominant leaders: 2@=4m above grade, Pruned: limbed-up.	Remain	
29	Pinus nigra	Austrian Pine	45	City	Good	Asymmetrical canopy, Single stem, Co-dominant leaders: 2@=7m above grade, Pruned: limbed-up.	Remain	
30	Acer negundo	Manitoba Maple	2 @ 15	Boundary	Poor	Asymmetrical canopy, Single stem, Co-dominant leaders: 2@ =1m above grade, Pruned limbs, Leaning, Included bark.	Remove	Construction
31	Acer platanoides	Norway Maple	15	Boundary	Moderate	Asymmetrical canopy, Single stem, Pruned branches, Poor branch angle, Included bark, Grown into fence.	Remove	Construction
32	Acer negundo	Manitoba Maple	3 @ 15	City	Moderate	Asymmetrical canopy, Multi-stem: 3, Broken limbs.	Remain	
33	Quercus rubra	Red Oak	35	City	Good	Asymmetrical canopy, Single stem, Pruned limbs.	Remain	
34	Quercus rubra	Red Oak	50	City	Good	Symmetrical canopy, Single stem, Die-back: 5% @ branches.	Remain	
35	Acer platanoides	Norway Maple	30	Private	Moderate	Symmetrical, single stem, Pruned limbs @ O.H Utilities	Remove	Construction
36	Acer platanoides	Norway Maple	25	Private	Poor	Asymmetrical, single stem, Grown into fence.	Remove	Construction
37	Acer platanoides	Norway Maple	12	Private	Moderate	Symmetrical canopy, Single stem, Grown into fence.	Remove	Construction
38	Acer negundo	Manitoba Maple	12	Private	Moderate	Asymmetrical canopy, Single stem, Broken limbs.	Remove	Construction
39	Tilia cordata	Little-Leaf Linden	25	Private	Moderate	Asymmetrical canopy, Single stem, Single stem, Poor branch angle, Leaning, Grown into fence.	Remove	Construction
40	Acer negundo	Manitoba Maple	25	Private	Moderate	Asymmetrical canopy, Single stem, Co-dominant leaders: 2@=1m above grade, Grown into fence.	Remove	Construction
41	Acer negundo	Manitoba Maple	25	Private	Poor	Asymmetrical canopy, Single stem, Pruned branches, Grown into fence.	Remove	Construction
42	Thuja occidentalis	Eastern White Cedar	2 @15	Private	Good	Asymmetrical canopy, Multi-stem: 2.	Remove	Construction
43	Ulmus spp.	Elm	25	Private	Moderate	Asymmetrical canopy, Single stem, Leaning.	Remove	Construction



Last Saved: 2022/02/23 1:45:59 PM
 File Location: Z:\Projects\2112-01_Shillington_Ave_Silver\Drawings\TIR\TIR_02_TreeInformationReport.dwg