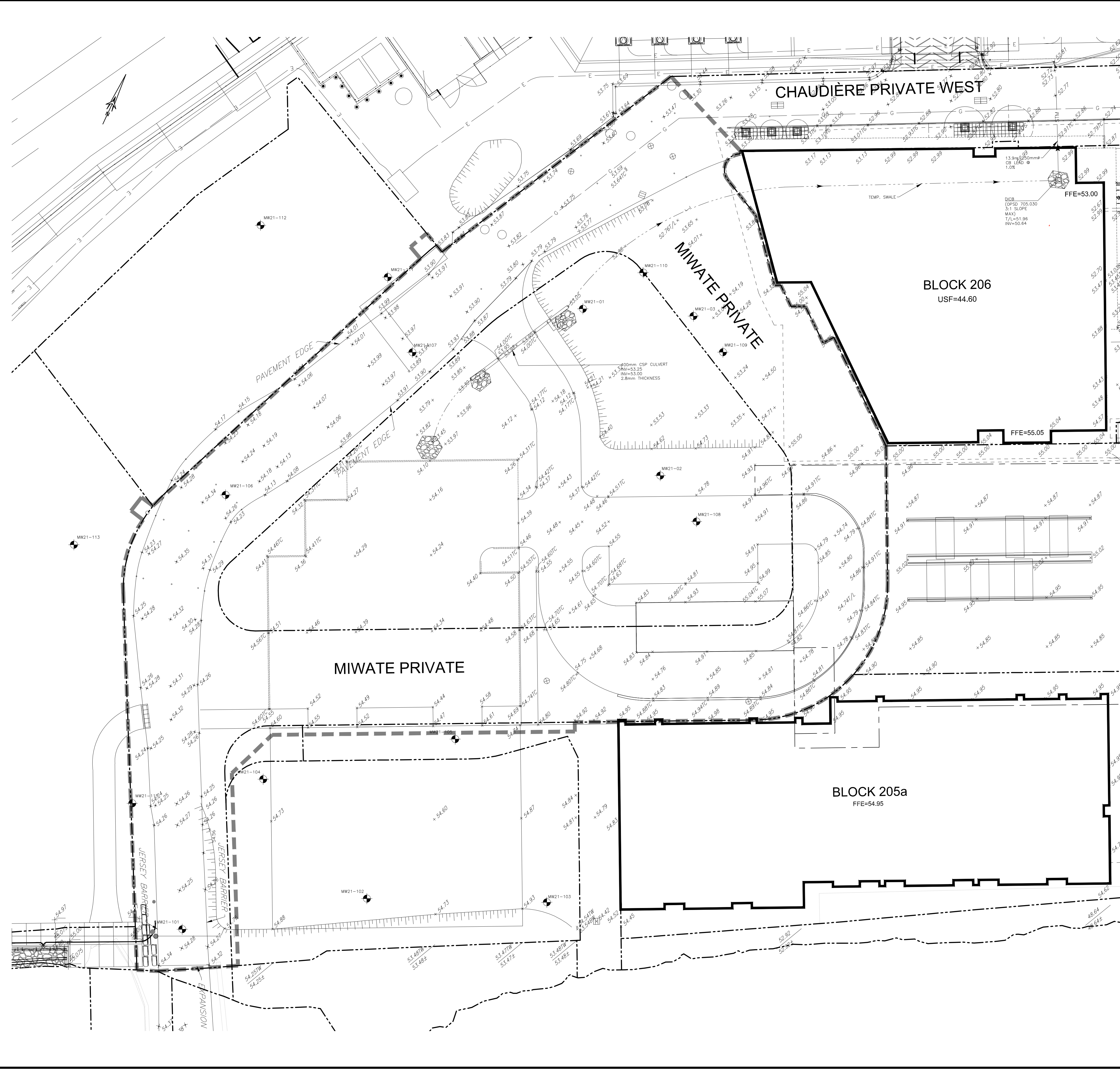


TITLEBLOCK 24x36 VERT ENG 3.0
 PRINT DATE: 2022/03/14 PAPER SIZE: A0
 PATH: Z:\C:\CIMA-C100\Projects\A0000931_2021\Block 7_Ottawa400_Drafting\400_Civil\3_Sediment&Erosion.dwg LAYOUT: C003_SE03



- 1. SEDIMENT AND EROSION CONTROL**
- Unless otherwise indicated, all materials and construction methods to be in accordance with the requirements of the latest edition of the Ontario Provincial Standard Specifications and Drawings (OPSS and OPSD), the Ontario Ministry of Environment, Conservation and Parks (MECP), applicable Conservation authorities, the municipal standard specifications and drawings, and all other governing authorities as they apply.
 - Wherever standards, laws and/or regulations are mentioned they refer to their current versions, modifications included.
 - Specifically, sediment and erosion control measures to be constructed as per OPSS/MUNI 805.
 - The Contractor must implement best management practices and provide adequate sediment and erosion control measures during construction:
 - Prevent soil erosion which can result from stormwater runoff or wind erosion during construction;
 - Prevent sediment deposits in the storm sewer and/or collecting streams and;
 - Prevent air pollution from dust and particulate matter.
 - Provisions must be made for sediment and erosion control measures prior to stripping the site of vegetation and other deleterious materials. Measures such as phase stripping, vegetation buffer zones, silt fences, straw bales, sediment traps/basins, rock checks, etc. must be constructed and maintained in order to control sediment, as required by the provincial and municipal governing authorities.
 - The Contractor must set up the measures shown on the plan, inspect them frequently and clean and repair or replace the deteriorated structures.
 - When the sediment and erosion control measures have to be removed in order to complete a portion of the work, these same measures must be reinstated.
 - When storing soil on site in piles the Contractor must cover each pile with tarps, straw or a geotextile fabric to avoid fine particle transport by wind and/or streaming rain water.
 - During the construction period, sediment capture silt sacks or filter cloths must be installed and maintained between the frame and cover of all catchbasins and catchbasin/manholes to minimize sediments entering the storm sewer system. All landscaping areas must be completed prior to the removal of the silt sacks or filter cloths.
 - The light duty silt fence barrier must be installed as per OPSS 219.110.
 - At all times the Contractor must maintain the municipal access roads clean and free of sediments. When cleaning the access roads, the Contractor must take the necessary precautions to clear the surfaces covered with sediment prior to cleaning with water.
 - For dust control, Contractor to apply calcium chloride (Type I - OPSS 2501 and CAN/CSA-15-1) and water with equipment approved by the Owner's representative at rate in accordance to OPSS/MUNI 506 when directed by Owner's representative.
 - At the end of the construction period, the Contractor is responsible for removal of the temporary sediment and erosion control measures and reconditioning the affected areas.
 - This plan is a "Living Document" which may be revised in the event that the control measures are not sufficient.

EXISTING

- WM - WATERMAIN
- SAN - SANITARY SEWER
- STM - STORM SEWER
- D - DRAIN
- G - GAS LINE (APPROX. LOC.)
- T - UNDERGROUND TELEPHONE (APPROX. LOC.)
- CA - UNDERGROUND TAFFIC CABLE (APPROX. LOC.)
- E - UNDERGROUND ELECTRICITY (APPROX. LOC.)
- OVERHEAD WIRES
- LOT LINE
- RIGHT-OF-WAY LIMITS
- EASEMENT
- TOP OF SLOPE
- DITCH CENTER
- BOTTOM OF SLOPE

PROPOSED

- CATCHBASIN
- MANHOLE/CATCHBASIN
- MANHOLE
- FIRE HYDRANT
- VALVE
- REDUCER
- TEE
- VALVE CHAMBER
- PRIVATE UTILITIES (WATERMAIN)
- NATURAL GAS VALVE
- SIGN
- STOP SIGN
- TRAFFIC LIGHT
- ELECTRICITY POLE
- TELEPHONE POLE
- ELECT.-TEL-STREET LIGHT POLE
- ELECT.-TEL-TRANSFORMER POLE
- PRIVATE STREET LIGHT
- ELECTRICITY MANHOLE
- TELEPHONE MANHOLE
- SURVEY STATION
- ELEVATION
- MW21-01 BOREHOLE (LOC. APPROX.)
- WORK LIMIT

ABBREVIATIONS

- STM - STORM
- SAN - SANITARY
- WM - WATERMAIN
- WTR - WATER
- INV - INVERT
- MH - MANHOLE
- CB - CATCHBASIN
- TL - TOP OF LID
- OBV - OVERT
- FFE - FINISHED FLOOR ELEVATION
- BLDG - BUILDING
- SERV - SERVICE

1:250 0 2.5 5 10 15m

No.	Date	Description	By
1			
2	AUG. 31, 2022	ISSUED FOR SITE PLAN APPLICATION	A.C.
1	APR. 18, 2022	ISSUED FOR SITE PLAN APPLICATION	A.C.

DESIGNED BY:

APPROVED BY:

CIMA+

CLIENT: **DREAM UNLIMITED**
 30 ADELAIDE STREET EAST
 SUITE 301
 TORONTO, ON, M5C 3H1

ZIBI (Project Address)
 310 Miwate Private
 OTTAWA, ONTARIO
 K1R 0E1

PROJECT NAME: **ZIBI ONTARIO
 BLOCK 204
 315 PRIVE MIWATE PRIVATE,
 CHAUDIERE ISLAND
 OTTAWA, ONTARIO**

SHEET TITLE: **SEDIMENT & EROSION
 CONTROL PLAN**

DISCIPLINE: **CIVIL**

DRAWN BY: S.C. POGGIOLI | SCALE: 1:250

DESIGNED BY: J. SAUVE | DATE: 2022/03/14

APPROVED BY: A. CHAUMONT | APPROVER: A. CHAUMONT

PROJECT No.: A000931 | DRAWING No.: **C003**

SHEET No.: 3 of 11

NOTE OF CAUTION

THE GEODETIC COORDINATES OF EVERY ITEM INCLUDED AS PART OF THIS DOCUMENT ARE IN NAD83 - ORIGINAL / MTM - REFERENCE SYSTEM AND HAVE NO LEGAL VALUE. THE SITE LAYOUT MUST BE COMPLETED USING THE OFFICIAL BENCHMARKS OF AN ACCREDITED LAND SURVEYOR IN THE NAD83 - ORIGINAL / MTM - REFERENCE SYSTEM.

THE UNDERGROUND FEATURES AND INFORMATION THAT APPEAR ON THE DRAWINGS WERE OBTAINED FROM THE PUBLIC UTILITY COMPANIES AND/OR FROM THE CITY EACH RESPECTIVELY.

ALL INFORMATION UNDER THE LEGEND 'EXISTING' IS FOR INFORMATION ONLY. COMPLETE OR EXACT LOCATION AND ELEVATION OF UNDERGROUND SERVICES ARE NOT GUARANTEED.

CERTAIN UNDERGROUND FEATURES ON PRIVATE PROPERTY ARE NOT SHOWN ON THE CURRENT DRAWING.

ANYONE WHO PROCEEDS WITH EXCAVATION WORK SHALL VERIFY THE EXACT LOCATION OF ALL UNDERGROUND FEATURES, BY EXPLORATORY EXCAVATIONS, AND SHALL ASSUME FULL RESPONSIBILITY IF THERE IS ANY DAMAGE THAT OCCURS DURING WORK.

THE CONTRACTOR WILL HAVE THE RESPONSIBILITY AND THE OBLIGATION TO VALIDATE, BY EXPLORATORY EXCAVATION, THE SIZE OF THE PUBLIC UTILITIES UNDERGROUND SERVICES AND TO WARN THE ENGINEER OF ANY CONFLICT WITH THE PROJECTED WORK.