

GENERAL NOTES
 1. These architectural documents are the exclusive property of HDR Architecture Associates and NEUF architect(e)s and cannot be used, copied or reproduced without written pre-authorization.
 2. All dimensions which appear on the documents must be verified by the contractor before to start the work.
 3. The architect must be notified of all errors, omissions and discrepancies between these documents and those of the others professionals.
 4. The dimensions on these documents must be read and not measured.

Structural Engineer
RJC Engineers
 1540 Carling Avenue, Suite 304
 Ottawa, ON, K1Z 8P9

Electrical & Mechanical Engineer
Smith + Andersen
 1600 Carling Avenue, Suite 530
 Ottawa, ON, K1Z 1G3

Planning
Folenn Planning + Design
 388 Cooper Street, Suite 300
 Ottawa, ON, K2P 2H7

Landscape Architect
CSW
 319 McRae Avenue, Suite 502
 Ottawa, ON, M1Z 0S9

Civil
CIMA
 240 Catherine Street, Unit 110
 Ottawa, ON, K2P 2G8

Architect
NEUF architect(e)s CANADA INC.
 47 Clarence St, Suite 406, Ottawa, ON K1N 9K1



Client
DREAM UNLIMITED
 30 Adelaide Street East
 Suite 301
 Toronto, ON, M5C 3H1
 T: (416) 365-3535

ZIBI
 6 Booth Street (Abart Island)
 Ottawa, ON, M1R 6K8

Project
ZIBI - BLOCK 204

Location PROJECT No.
315 Miwate Private 12791
Ottawa, ON

NO	REVISION	DATE (yy-mm-dd)
A	ISSUED FOR SITE PLAN CONTROL APPLICATION	2022-04-21
B	ISSUED FOR SITE PLAN CONTROL APPLICATION RE-SUBMISSION	2022-09-15
C	75% DESIGN DEVELOPMENT FOR COORDINATION	2022-10-14
D	FOUNDATION PERMIT	2022-12-20

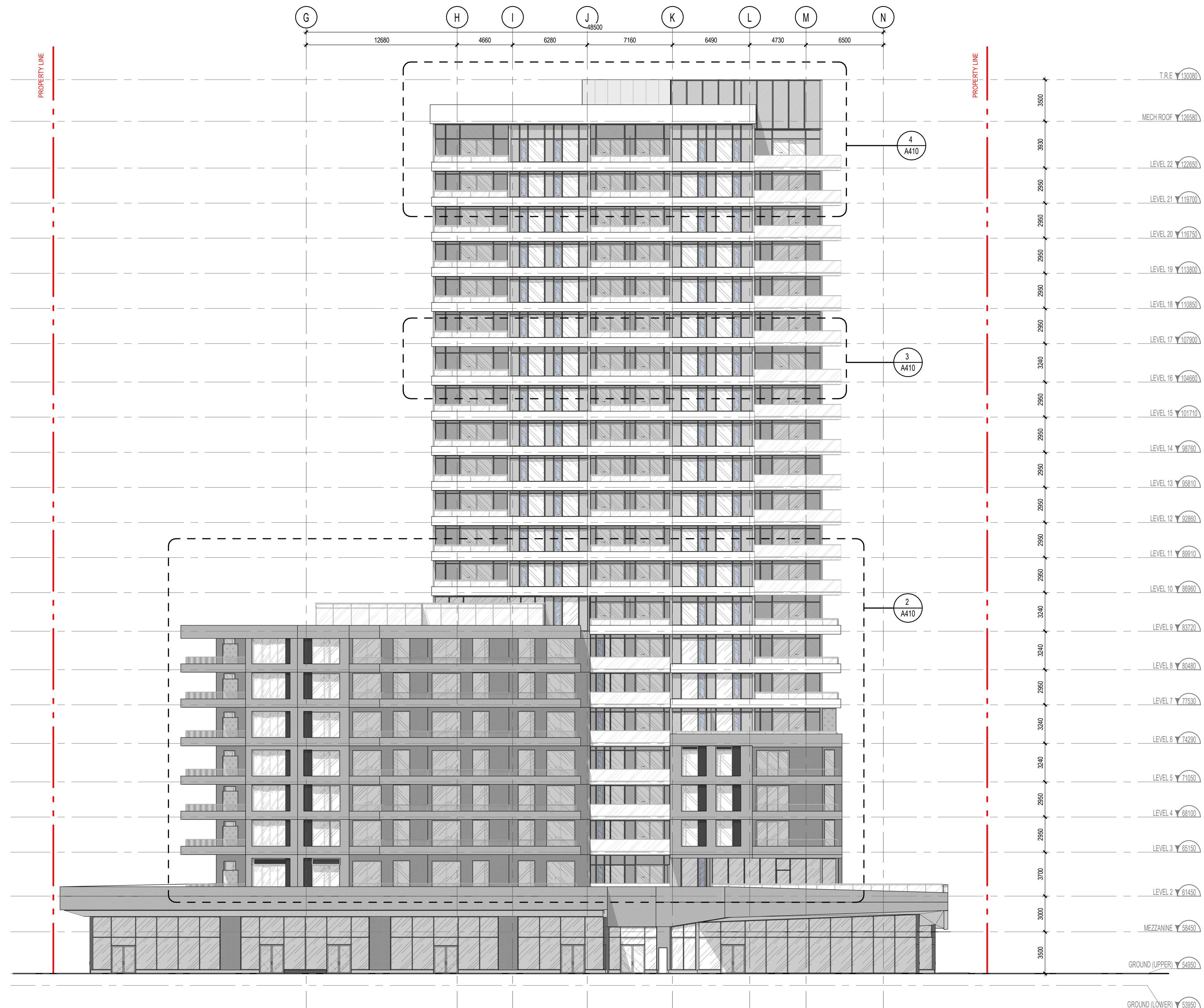
Preliminary
 DO NOT USE FOR
 CONSTRUCTION

Drawn by
 AC / BMP / EW
 DATE (yy.mm.dd)
 22.03.21
 Drawing Title

Checked by
 CL / LK
 Scale
 As indicated

ELEVATION - SOUTH

Revision Drawing Number
D A400



MATERIAL LEGEND

GL-01	CLEAR GLAZING
GL-02	STATE - TINTED GLASS
GL-03	STATE - SPANDREL PANEL
GL-04	DARK SPANDREL GLAZING
GL-05	FROSTED GLASS PANEL
CP-02	WHITE CEMENTITIOUS CLADDING
BP-01	DARK GREY BRICK CLADDING
WD	WOOD SLAT CLADDING

ELEVATION - SOUTH
 1:200

1
 A400

GENERAL NOTES
 1. These architectural documents are the exclusive property of HDR Architecture Associates and NEUF architect(e)s and cannot be used, copied or reproduced without written pre-authorization.
 2. All dimensions which appear on the documents must be verified by the contractor before to start the work.
 3. The architect must be notified of all errors, omissions and discrepancies between these documents and those of the others professionals.
 4. The dimensions on these documents must be read and not measured.

Structural Engineer
RJC Engineers
 1540 Carling Avenue, Suite 304
 Ottawa, ON, K1Z 8P9

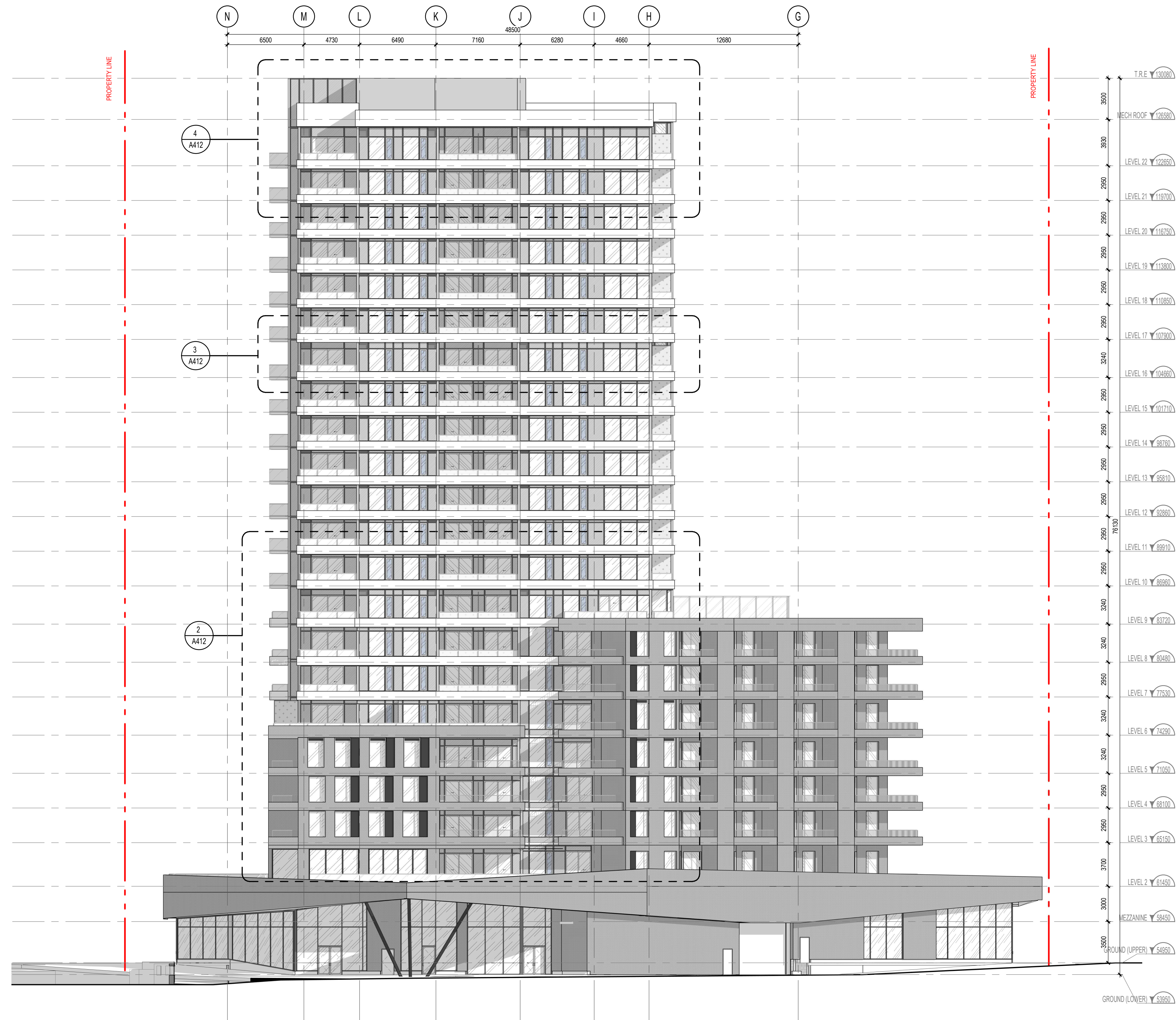
Electrical & Mechanical Engineer
Smith + Andersen
 1600 Carling Avenue, Suite 530
 Ottawa, ON, K1Z 1G3

Planning
Folenn Planning + Design
 388 Cooper Street, Suite 300
 Ottawa, ON, K2P 2H7

Landscape Architect
CSW
 319 McRae Avenue, Suite 502
 Ottawa, ON, K1Z 0S9

Civil
CIMA
 240 Catherine Street, Unit 110
 Ottawa, ON, K2P 2G8

Architect
NEUF architect(e)s CANADA INC.
 47 Clarence St, Suite 406, Ottawa, ON K1N 9K1



MATERIAL LEGEND	
	GL-01 CLEAR GLAZING
	GL-02 STATE - TINTED GLASS
	GL-03 STATE - SPANDREL PANEL
	GL-04 DARK SPANDREL GLAZING
	GL-05 FROSTED GLASS PANEL
	CP-02 WHITE CEMENTITIOUS CLADDING
	BP-01 DARK GREY BRICK CLADDING
	WD WOOD SLAT CLADDING

ELEVATION - NORTH

1:200

1
A401

Client
DREAM UNLIMITED

30 Adelaide Street East
 Suite 301
 Toronto, ON, M5C 3H1
 T: (416) 365-3535

ZIBI

6 Booth Street (Albert Island)
 Ottawa, ON, M1R 6K8

Project

ZIBI - BLOCK 204

Location

**315 Miwate Private
 Ottawa, ON**

PROJECT No.

12791

NO REVISION DATE (yy-mm-dd)

NO	REVISION	DATE (yy-mm-dd)
A	ISSUED FOR SITE PLAN CONTROL APPLICATION	2022-04-21
B	ISSUED FOR SITE PLAN CONTROL APPLICATION RE-SUBMISSION	2022-09-15
C	75% DESIGN DEVELOPMENT FOR COORDINATION	2022-10-14
D	FOUNDATION PERMIT	2022-12-20

Preliminary
 DO NOT USE FOR
 CONSTRUCTION

Drawn by

AC / BMP / EW

DATE (yy-mm-dd)

22.03.21

Drawing Title

ELEVATION - NORTH

Checked by

CL / LK

Scale

As indicated

Revision

D

Drawing Number

A401

- GENERAL NOTES
1. These architectural documents are the exclusive property of HDR Architecture Associates and NEUF architect(e)s and cannot be used, copied or reproduced without written pre-authorization.
 2. All dimensions which appear on the documents must be verified by the contractor before to start the work.
 3. The architect must be notified of all errors, omissions and discrepancies between these documents and those of the other professionals.
 4. The dimensions on these documents must be read and not measured.

Structural Engineer
RJC Engineers
 1340 Carling Avenue, Suite 304
 Ottawa, ON, K1Z 8P9

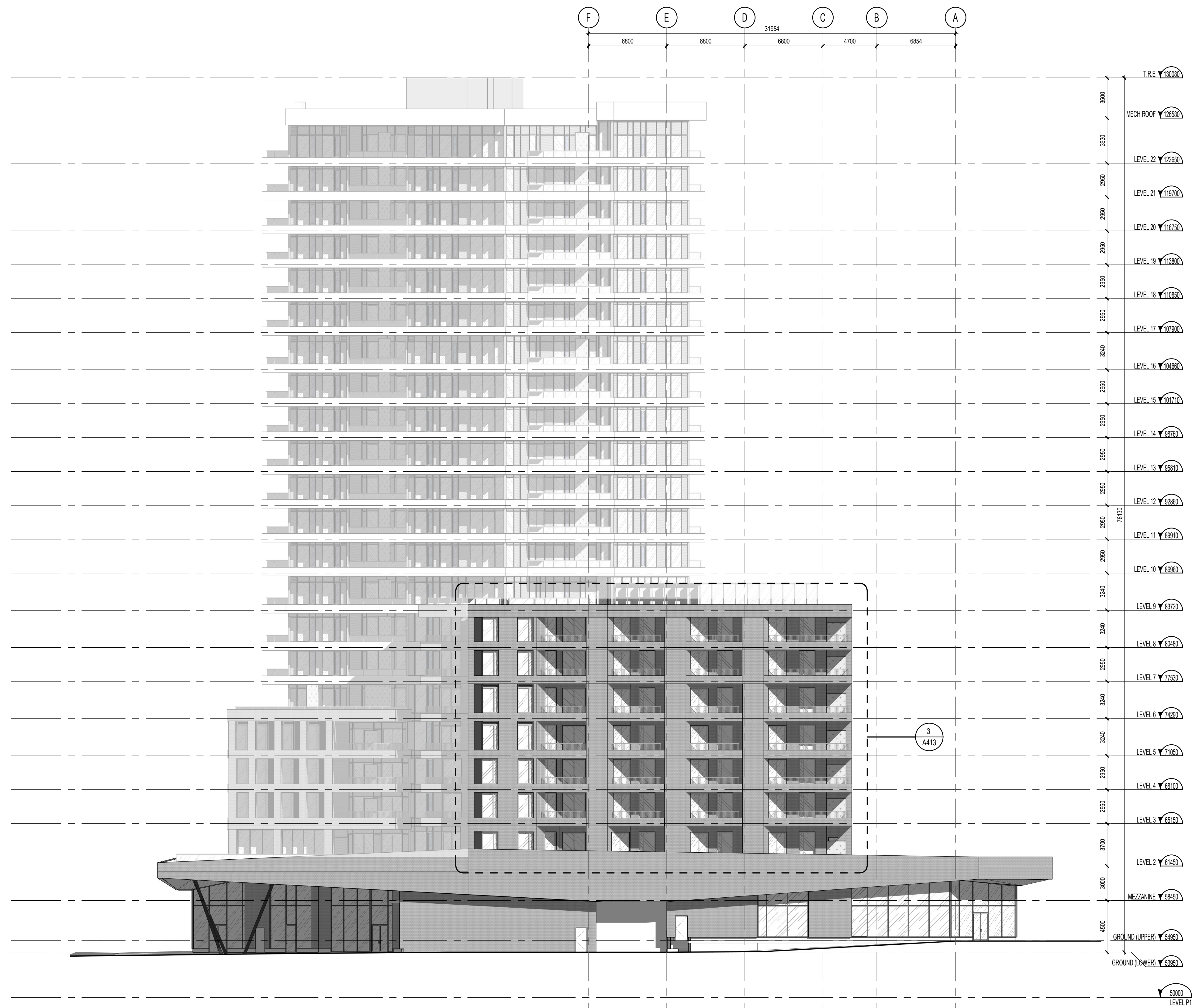
Electrical & Mechanical Engineer
Smith + Andersen
 1600 Carling Avenue, Suite 530
 Ottawa, ON, K1Z 1G3

Planning
Folenn Planning + Design
 388 Cooper Street, Suite 300
 Ottawa, ON, K2P 2H7

Landscape Architect
CSW
 319 McRae Avenue, Suite 502
 Ottawa, ON, K1Z 0S9

Civil
CIMA
 240 Catherine Street, Unit 110
 Ottawa, ON, K2P 2G8

Architect
NEUF architect(e)s CANADA INC.
 47 Clarence St, Suite 406, Ottawa, ON K1N 9K1



ELEVATION - NORTHWEST
 1 : 200

Client
DREAM UNLIMITED
 30 Adelaide Street East
 Suite 301
 Toronto, ON, M5C 3H1
 T: (416) 365-3535

ZIBI
 6 Booth Street (Albert Island)
 Ottawa, ON, M1R 6K8

Project
ZIBI - BLOCK 204

Location PROJECT No.
315 Miwate Private 12791
 Ottawa, ON

NO	REVISION	DATE (yy-mm-dd)
A	ISSUED FOR SITE PLAN CONTROL APPLICATION	2022-04-21
B	ISSUED FOR SITE PLAN CONTROL APPLICATION RE-SUBMISSION	2022-09-15
C	75% DESIGN DEVELOPMENT FOR COORDINATION	2022-10-14
D	FOUNDATION PERMIT	2022-12-20

Preliminary
 DO NOT USE FOR
 CONSTRUCTION

Drawn by
 AC / BMP / EW
 DATE (yy.mm.dd)
 22.03.21
 Drawing Title

Checked by
 CL / LK
 Scale
 1 : 200

ELEVATION - NORTHWEST

Revision Drawing Number
D A403

GENERAL NOTES
 1. These architectural documents are the exclusive property of HDR Architecture Associates and NEUF architect(e)s and cannot be used, copied or reproduced without written pre-authorization.
 2. All dimensions which appear on the documents must be verified by the contractor before to start the work.
 3. The architect must be notified of all errors, omissions and discrepancies between these documents and those of the others professionals.
 4. The dimensions on these documents must be read and not measured.

Structural Engineer
RJC Engineers
 1540 Carling Avenue, Suite 304
 Ottawa, ON, K1Z 8P9

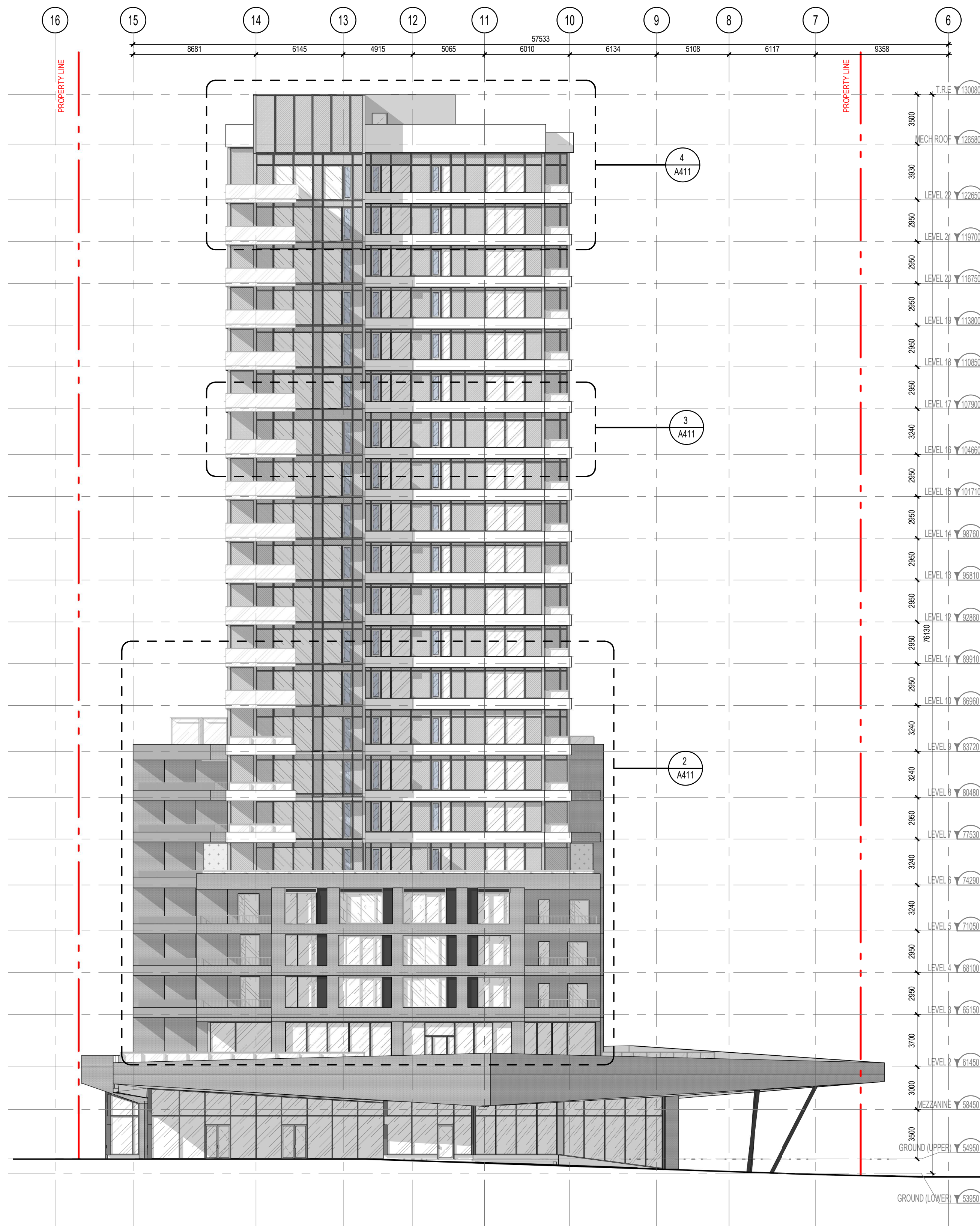
Electrical & Mechanical Engineer
Smith + Andersen
 1600 Carling Avenue, Suite 530
 Ottawa, ON, K1Z 1G3

Planning
Folenn Planning + Design
 388 Coopers Street, Suite 300
 Ottawa, ON, K2P 2H7

Landscape Architect
CSW
 319 McRae Avenue, Suite 502
 Ottawa, ON, K1Z 0S9

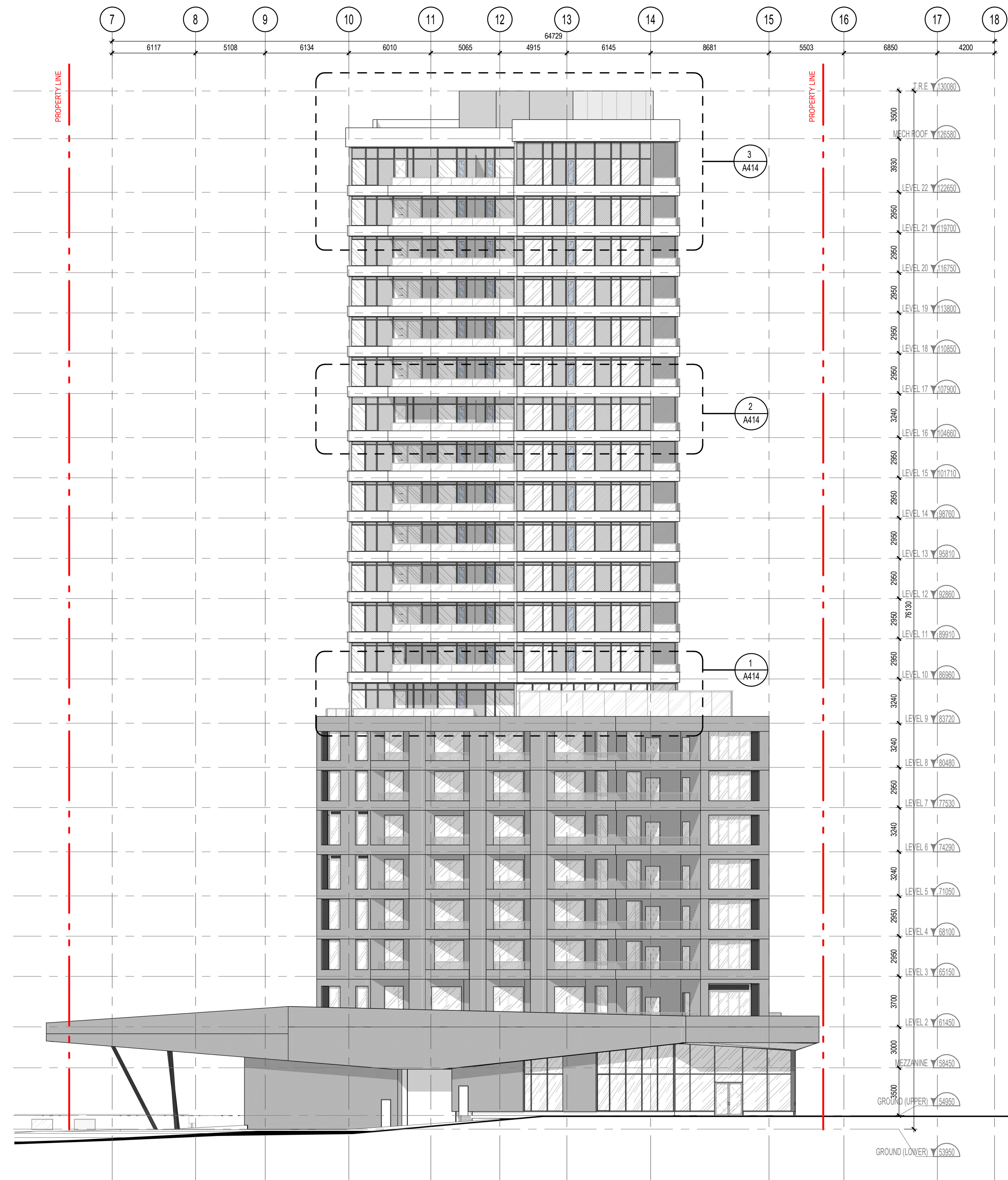
Civil
CIMA
 240 Catherine Street, Unit 110
 Ottawa, ON, K2P 2G8

Architect
NEUF architect(e)s CANADA INC.
 47 Clarence St, Suite 406, Ottawa, ON K1N 9K1



ELEVATION - EAST
 1:200

1
 A404



ELEVATION - WEST
 1:200

2
 A404

Client
DREAM UNLIMITED
 30 Adelaide Street East
 Suite 301
 Toronto, ON, M5C 3H1
 T: (416) 365-3535

ZIBI
 6 Booth Street (Albert Island)
 Ottawa, ON, M1R 6K8

Project
ZIBI - BLOCK 204

Location
315 Miwate Private
 Ottawa, ON

NO	REVISION	DATE (yy-mm-dd)
A	ISSUED FOR SITE PLAN CONTROL APPLICATION	2022-04-21
B	ISSUED FOR SITE PLAN CONTROL APPLICATION RE-SUBMISSION	2022-09-15
C	75% DESIGN DEVELOPMENT FOR COORDINATION	2022-10-14
D	FOUNDATION PERMIT	2022-12-20

Preliminary
 DO NOT USE FOR
 CONSTRUCTION

Drawn by
 AC / BMP / EW
 DATE (yy-mm-dd)
 22.03.21
 Drawing Title

Checked by
 CL / LK
 Scale
 1 : 200

ELEVATION - EAST-WEST

Revision
D
 Drawing Number
A404