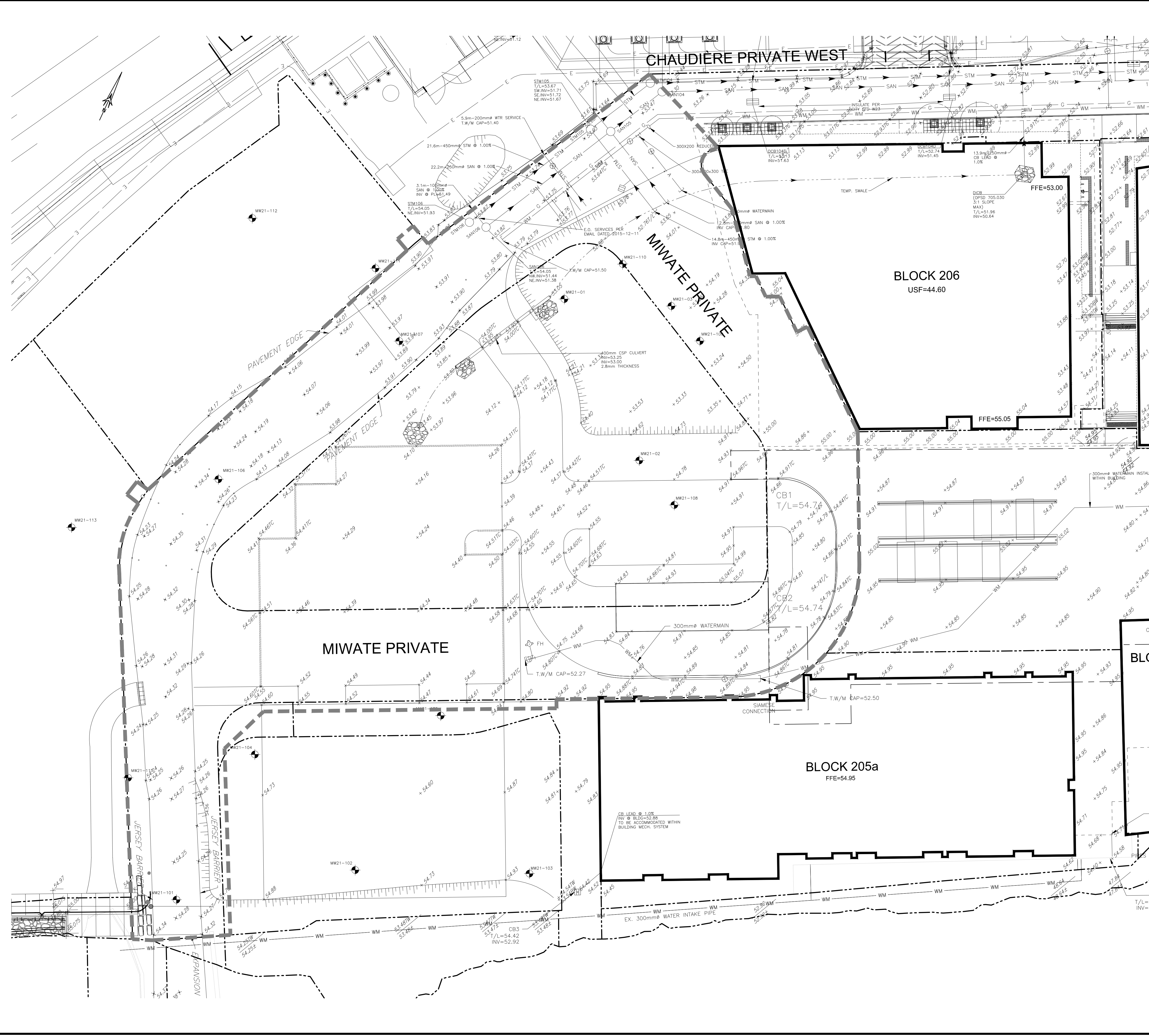


TITLEBLOCK 24x36 VERT ENG 3.0  
 PRINT DATE: 2022/03/14 PAPER SIZE: A0  
 PATH: C:\Users\c10001\Documents\Projects\24x36\24x36\_VERT.dwg / LAYOUT: C001\_Topo



**EXISTING**

- WM WATERMAIN
- SAN SANITARY SEWER
- STM STORM SEWER
- D DRAIN
- G GAS LINE (APPROX. LOC.)
- T UNDERGROUND TELEPHONE (APPROX. LOC.)
- CA UNDERGROUND TRAFFIC CABLE (APPROX. LOC.)
- E UNDERGROUND ELECTRICITY (APPROX. LOC.)
- OVERHEAD WIRES
- LOT LINE
- RIGHT-OF-WAY LIMITS
- EASEMENT
- TOP OF SLOPE
- DITCH CENTER
- BOTTOM OF SLOPE
- CATCHBASIN
- MANHOLE/CATCHBASIN
- MANHOLE
- FIRE HYDRANT
- VALVE
- REDUCER
- TEE
- VALVE CHAMBER
- PRIVATE UTILITIES (WATERMAIN)
- NATURAL GAS VALVE
- SIGN
- STOP SIGN
- TRAFFIC LIGHT
- ELECTRICITY POLE
- TELEPHONE POLE
- ELECT.-TEL-STREET LIGHT POLE
- ELECT.-TEL-TRANSFORMER POLE
- PRIVATE STREET LIGHT
- ELECTRICITY MANHOLE
- TELEPHONE MANHOLE
- SURVEY STATION
- ELEVATION
- INVERT
- BOREHOLE (LOC. APPROX.)
- WORK LIMIT

**ABBREVIATIONS**

- STM → STORM
- SAN → SANITARY
- WM → WATERMAIN
- WTR → WATER
- INV → INVERT
- MH → MANHOLE
- CB → CATCHBASIN
- TL → TOP OF LID
- OBV → OBVERT
- FFE → FINISHED FLOOR ELEVATION
- BLDG → BUILDING
- SERV → SERVICE

1:250  
 0 2.5 5 10 15m

No.	Date	Description	By
2	AUG. 31, 2022	ISSUED FOR SITE PLAN APPLICATION	A.C.
1	APR. 18, 2022	ISSUED FOR SITE PLAN APPLICATION	A.C.

**STAMPS**

DESIGNED BY

APPROVED BY

**CIMA+**

ENGINEER

**TOPOGRAPHIC INFORMATION**

- CHAUDIÈRE AND ALBERT ISLAND TOPOGRAPHIC INFORMATION PROVIDED BY FAIRHALL, MOFFATT & WOODLAND LIMITED, DATED JANUARY 15, 2015.
- BOOTH STREET/FLEET STREET/LOYD STREET/ALBERT STREET TOPOGRAPHIC INFORMATION PROVIDED BY STANTEC GEOMATICS LIMITED, DATED APRIL 20, 2018
- TEMPORARY ROAD CHAUDIÈRE & ALBERT STREET TOPOGRAPHIC INFORMATION PROVIDED BY STANTEC GEOMATICS LIMITED, DATED AUGUST 08, 2019

**LEGAL INFORMATION**

- LEGAL SURVEY PROVIDED BY STANTEC GEOMATICS LIMITED, DATED 2022

**BENCH MARK**

POINT	NORTHING	EASTING	ELEVATION	DESCRIPTION
10	5031271	365915.9320	54.3480	CP
85591	5031480	366018.9270	51.8200	BOLT
86037	5031454	366008.0430	52.0910	PKN
1000010	5031523	365993.0550	51.2040	MON 2018-007

**NOTE OF CAUTION**

THE GEODETIC COORDINATES OF EVERY ITEM INCLUDED AS PART OF THIS DOCUMENT ARE IN NAD83 - ORIGINAL / MTM - REFERENCE SYSTEM AND HAVE NO LEGAL VALUE. THE SITE LAYOUT MUST BE COMPLETED USING THE OFFICIAL BENCHMARKS OF AN ACCREDITED LAND SURVEYOR IN THE NAD83 - ORIGINAL / MTM - REFERENCE SYSTEM.

THE UNDERGROUND FEATURES AND INFORMATION THAT APPEAR ON THE DRAWINGS WERE OBTAINED FROM THE PUBLIC UTILITY COMPANIES AND/OR FROM THE CITY EACH RESPECTIVELY.

ALL INFORMATION UNDER THE LEGEND 'EXISTING' IS FOR INFORMATION ONLY. COMPLETE OR EXACT LOCATION AND ELEVATION OF UNDERGROUND SERVICES ARE NOT GUARANTEED.

CERTAIN UNDERGROUND FEATURES ON PRIVATE PROPERTY ARE NOT SHOWN ON THE CURRENT DRAWING.

ANYONE WHO PROCEEDS WITH EXCAVATION WORK SHALL VERIFY THE EXACT LOCATION OF ALL UNDERGROUND FEATURES, BY EXPLORATORY EXCAVATIONS, AND SHALL ASSUME FULL RESPONSIBILITY IF THERE IS ANY DAMAGE THAT OCCURS DURING WORK.

THE CONTRACTOR WILL HAVE THE RESPONSIBILITY AND THE OBLIGATION TO VALIDATE, BY EXPLORATORY EXCAVATION, THE SIZE OF THE PUBLIC UTILITIES UNDERGROUND SERVICES AND TO WARN THE ENGINEER OF ANY CONFLICT WITH THE PROJECTED WORK.

**DREAM UNLIMITED**  
 30 ADELAIDE STREET EAST  
 SUITE 301  
 TORONTO, ON, M5C 3H1

**ZIBI (Project Address)**  
 310 Miwate Private  
 OTTAWA, ONTARIO  
 K1R 0E1

PROJECT NAME:  
**ZIBI ONTARIO  
 BLOCK 204  
 315 PRIVE MIWATE PRIVATE,  
 CHAUDIÈRE ISLAND  
 OTTAWA, ONTARIO**

SHEET TITLE:  
**TOPOGRAPHICAL  
 SURVEY PLAN**

DISCIPLINE:  
**CIVIL**

DRAWN BY: S.C. POGGIOLI	SCALE: 1:250
DESIGNED BY: J. SAUVE	DATE: 2022/03/14
APPROVED BY: A. CHAUMONT	APPROVER: A. CHAUMONT
PROJECT NO: A000931	DRAWING NO.:
SHEET NO: 1 of 11	<b>C001</b>