

GENERAL NOTES

1. These architectural documents are the exclusive property of HDR Architecture Associates and NEUF architect(e)s and cannot be used, copied or reproduced without written pre-authorization.
2. All dimensions which appear on the documents must be verified by the contractor before to start the work.
3. The architect must be notified of all errors, omissions and discrepancies between these documents and those of the others professionals.
4. The dimensions on these documents must be read and not measured.

Structural Engineer
RJC Engineers
 1340 Carling Avenue, Suite 304
 Ottawa, ON, K1Z 8P9

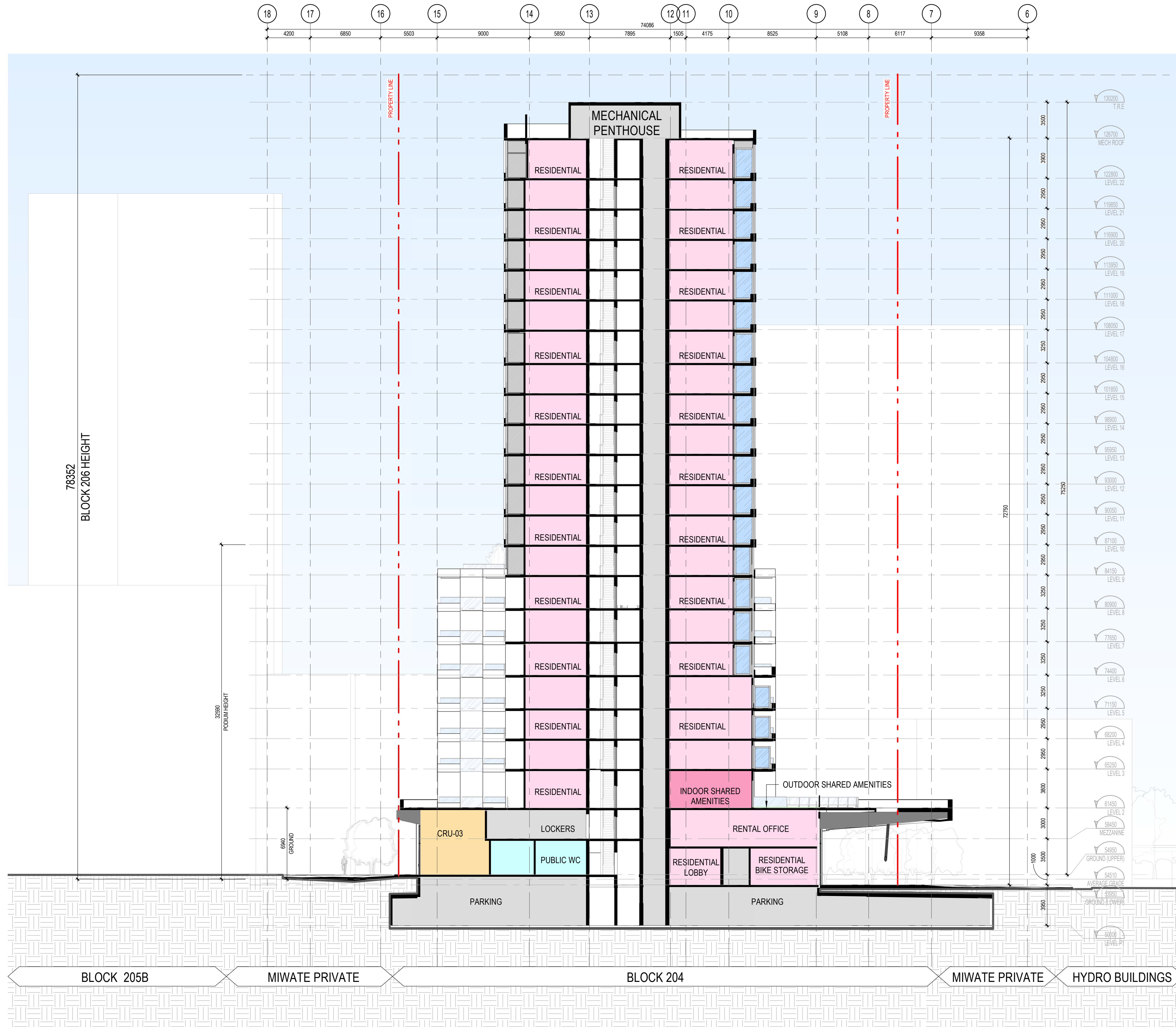
Electrical & Mechanical Engineer
Smith + Andersen
 1600 Carling Avenue, Suite 530
 Ottawa, ON, K1Z 1G3

Planning
Folenn Planning + Design
 388 Cooper Street, Suite 300
 Ottawa, ON, K2P 2H7

Landscape Architect
CSW
 319 McRae Avenue, Suite 502
 Ottawa, ON, K1Z 0S9

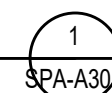
Civil
CIMA
 240 Catherine Street, Unit 110
 Ottawa, ON, K2P 2G8

Architect
NEUF architect(e)s CANADA INC.
 47 Clarence St, Suite 406, Ottawa, ON K1N 9K1



NORTH-SOUTH SECTION

1 : 200



SPA-A301

Client

DREAM UNLIMITED
 30 Adelaide Street East
 Suite 301
 Toronto, ON, M5C 3H1
 T: (416) 365-3535

ZIBI

6 Booth Street (Albert Island)
 Ottawa, ON, M1R 6K8

Project

ZIBI - BLOCK 204

Location

**315 Miwate Private
 Ottawa, ON**

PROJECT No.

12791

NO REVISION

DATE (yy-mm-dd)

0 ISSUED FOR SITE PLAN CONTROL APPLICATION

2022-04-21

1 ISSUED FOR SITE PLAN CONTROL APPLICATION RE-SUBMISSION

2022-09-15

**Preliminary
 DO NOT USE FOR
 CONSTRUCTION**

Drawn by

AC / EW

DATE (yy-mm-dd)

22/09/15

Drawing Title

NORTH-SOUTH SECTION

Checked by

CI / LK

Scale

1 : 200

Revision

Drawing Number

1

SPA-A301