

GENERAL NOTES

1. These architectural documents are the exclusive property of HDR Architecture Associates and NEUF architects and cannot be used, copied or reproduced without written pre-authorization.
2. All dimensions which appear on the documents must be verified by the contractor before to start the work.
3. The architect must be notified of all errors, omissions and discrepancies between these documents and those of the others professionals.
4. The dimensions on these documents must be read and not measured.

Structural Engineer
RJC Engineers
 1540 Carling Avenue Suite 304
 Ottawa, ON, K1Z 8P9

Electrical & Mechanical Engineer
Smith + Andersen
 1600 Carling Avenue, Suite 530
 Ottawa, ON, K1Z 1G3

Planning
Folenn Planning + Design
 388 Cooper Street, Suite 300
 Ottawa, ON, K2P 2H7

Landscape Architect
CSW
 319 McRae Avenue, Suite 502
 Ottawa, ON, M1Z 6S9

Civil
CIMA
 240 Catherine Street, Unit 110
 Ottawa, ON, K2P 2G8

Architect
NEUF architect(e)s CANADA INC.
 47 Clarence St. Suite 406, Ottawa, ON K1N 9K1



Client
DREAM UNLIMITED
 30 Adelaide Street East
 Suite 301
 Toronto, ON, M5C 3H1

ZIBI
 6 Booth Street (Abert Island)
 Ottawa, ON, M1R 6K8

Project
ZIBI - BLOCK 204

Location PROJECT No.
315 Miwate Private 0000.00
Ottawa, ON

NO REVISION DATE (yy-mm-dd)
 0 ISSUED FOR SITE PLAN APPLICATION 2022-04-14

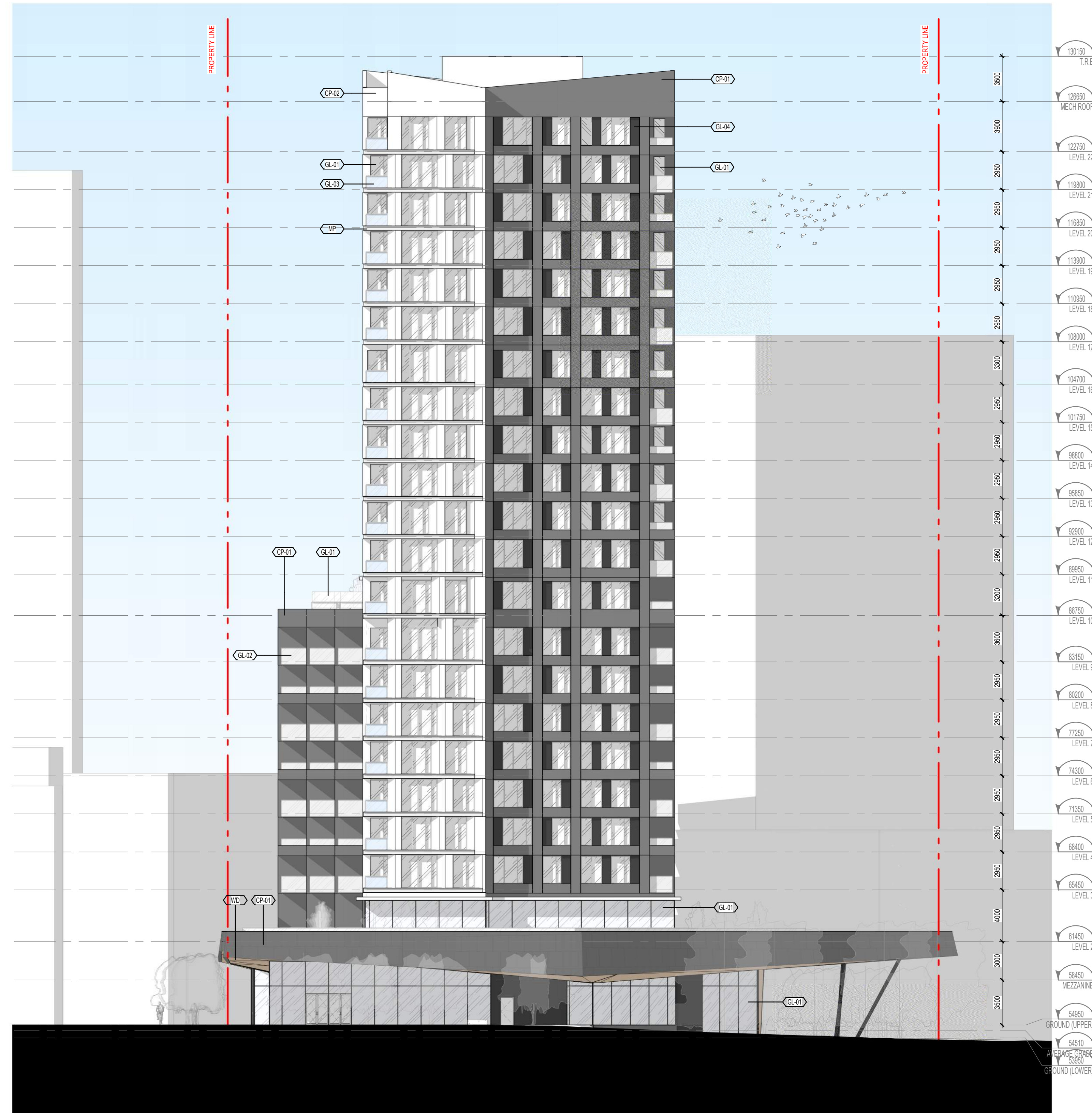
*Preliminary
 DO NOT USE FOR
 CONSTRUCTION*

Drawn by
AC / BMP / EW Checked by
CL / LK
 DATE (yy.mm.dd) Scale
 22.03.21 As indicated

ELEVATION - EAST

Revision Drawing Number
0 A412

MATERIAL LEGEND	
	GL-01 CLEAR GLAZING
	GL-02 GREY-TINTED FROSTED GLASS RAIL
	GL-03 FROSTED GLASS RAIL
	GL-04 DARK SPANDEL GLAZING
	CP-01 GREY CEMENTITIOUS CLADDING
	CP-02 WHITE CEMENTITIOUS CLADDING
	MP METAL PANEL
	WD WOOD SLAT CLADDING



EAST ELEVATION
 1:200

1
 A412