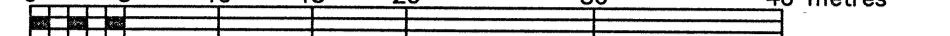


LOT 6 AND PART OF LOTS 5, 7, 8, 9, 10, 11 & 12 REGISTERED PLAN 310501 & PART OF LOTS 5, 6, 7, 8 & 9 REGISTERED PLAN 310509 CITY OF OTTAWA

FARLEY, SMITH & DENIS SURVEYING LTD. 2023

Scale 1: 400



Metric Note Distances shown on this plan are in metres and can be converted to feet by dividing by 0.3048.

Distance Note Distances shown on this plan are ground distances and can be converted to grid distances by multiplying by the combined scale factor of 0.99994.

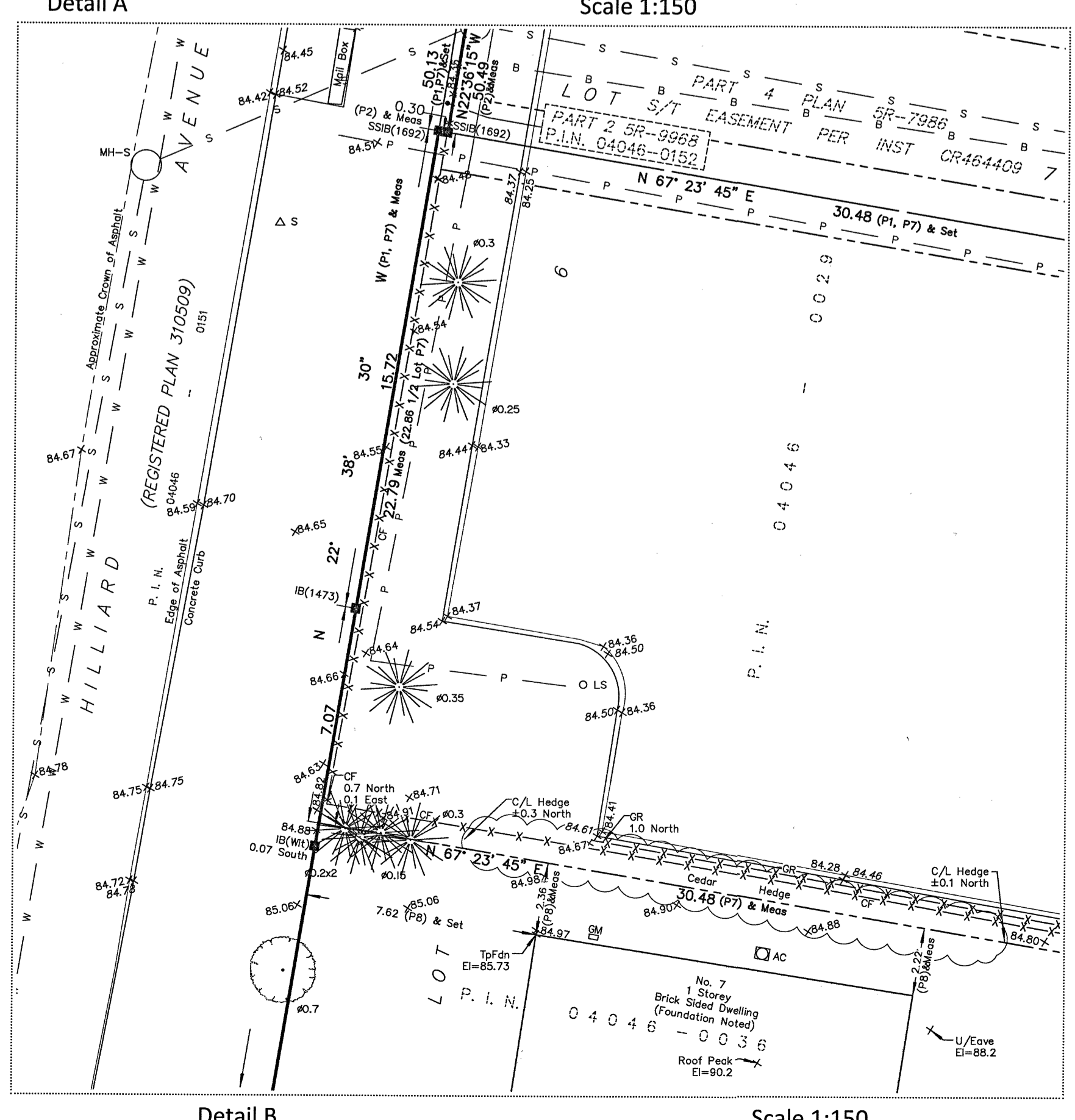
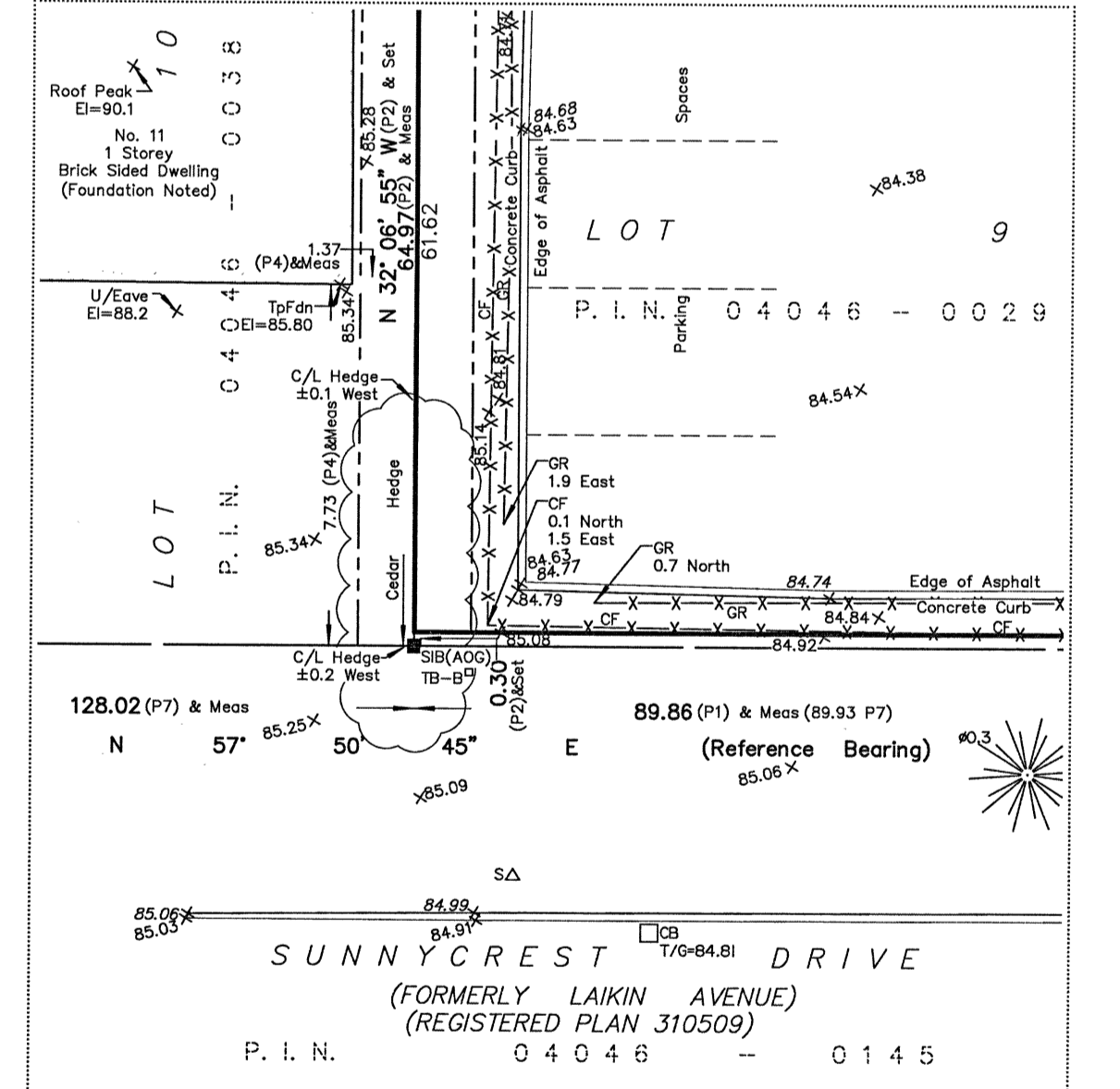
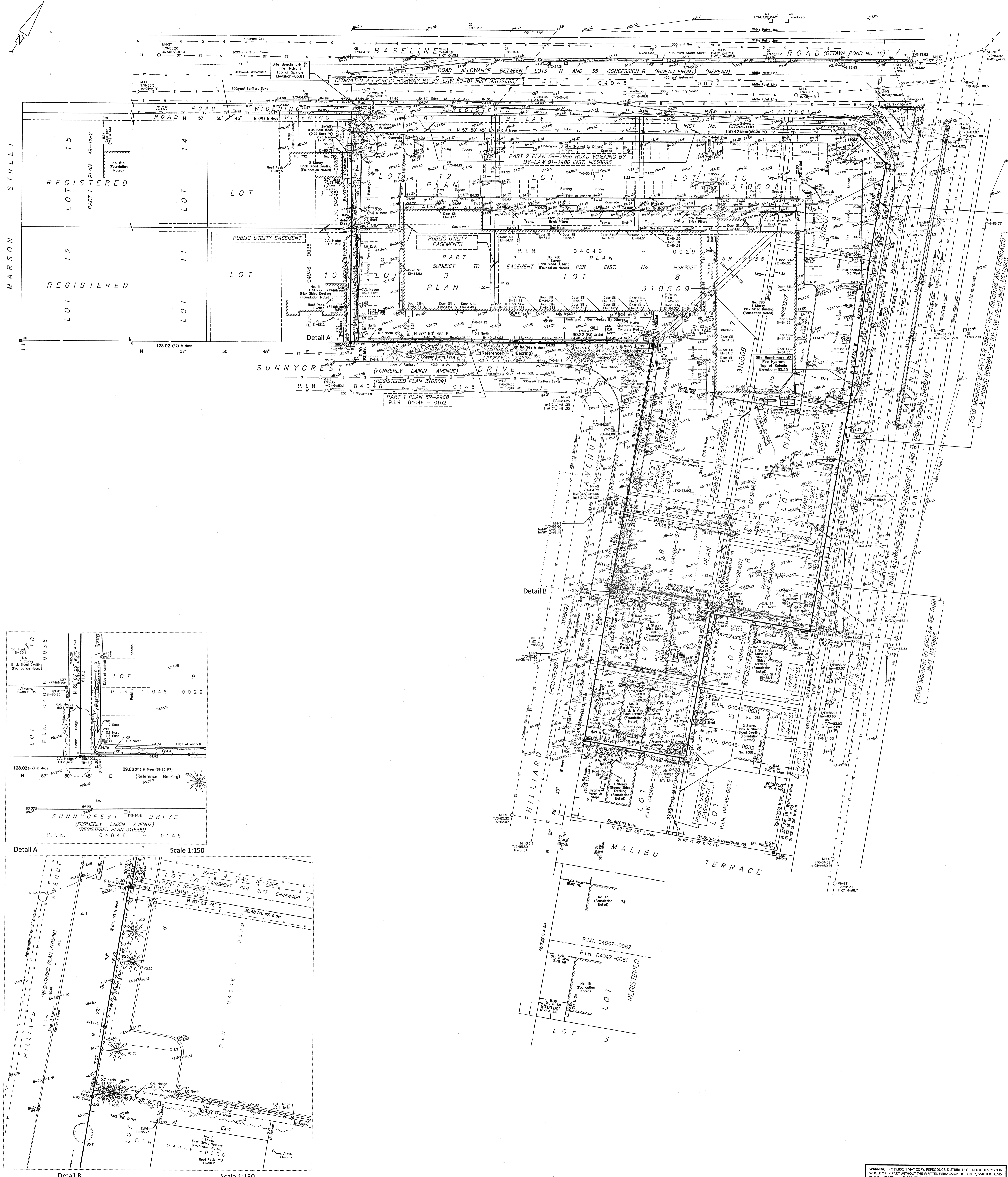
Bearing Note Bearings shown are grid bearings derived from the Can-Nat Real Time Network and are referred to the Central Meridian of MTN Zone 9 (76°30' West Longitude) Nad-83 (Original). For bearing comparisons, a rotation of 0°32'15" counter-clockwise was applied to bearings on P1, P2, P3, P4, P6, P7 & P9.

Elevation Notes 1. Elevations shown are geodetic and are referred to Geodetic Datum CGVD-1928 1578. (Mounton No. 19508002) 2. It is the responsibility of the user of this information to verify that its relative elevation and description agrees with the information shown on this drawing.

Utility Notes 1. This drawing cannot be accepted as acknowledging all of the utilities and it will be the responsibility of the user to contact the respective utility authorities for confirmation. 2. Only visible surface utilities were located. 3. Underground utility data derived from City of Ottawa utility sheet reference: 1-06-04, 1-06-05, 1-06-07, 833-834-835p4-03, 6122p&01, 11521p&8 & 12512p&8. 4. Sanitary and storm sewer grades and inverts were compiled from: City of Ottawa Utility Sheets. 5. A field location of underground plant by the pertinent utility authority is mandatory before any work involving breaking ground, probing, excavating, etc.

Notes & Legend table listing symbols for Denotes (Survey Monument Planted, Survey Monument Found, Standard Iron Bar, etc.) and Trees (Deciduous Tree, Coniferous Tree).

Note 1 Section of "Public Utility Easements" that is subject to easement CR310572.



Surveyor's Certificate I certify that: 1. This survey and plan are correct and in accordance with the Surveyors Act, the Surveyors Regulations and the Regulations made under them. 2. The survey was completed on the 26th day of April, 2023. Date April 27, 2023 Jamie Leslie Ontario Land Surveyor