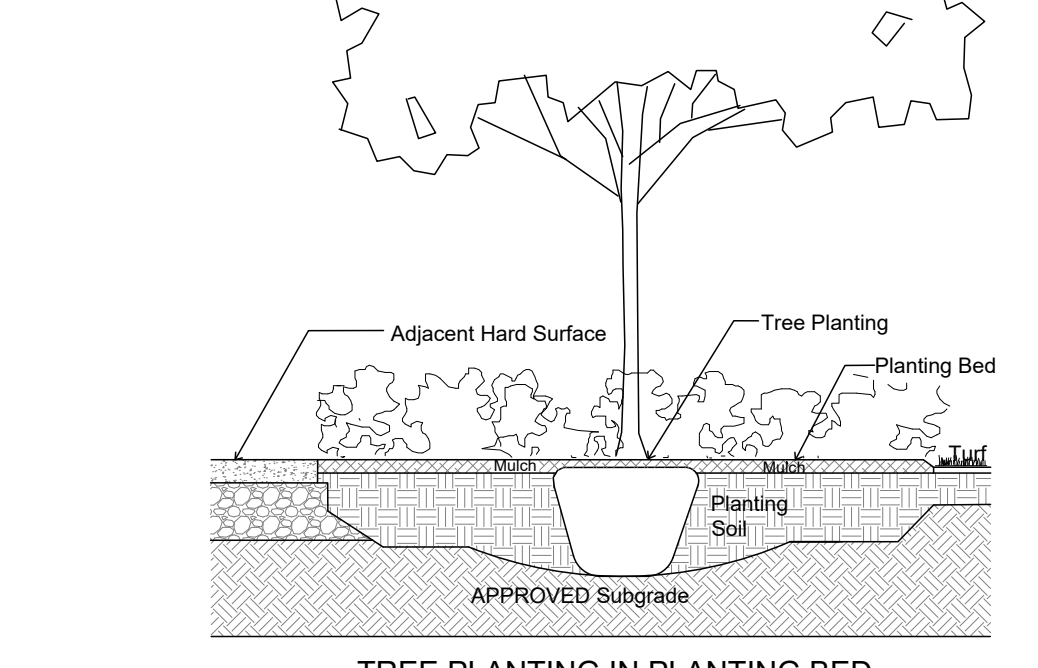
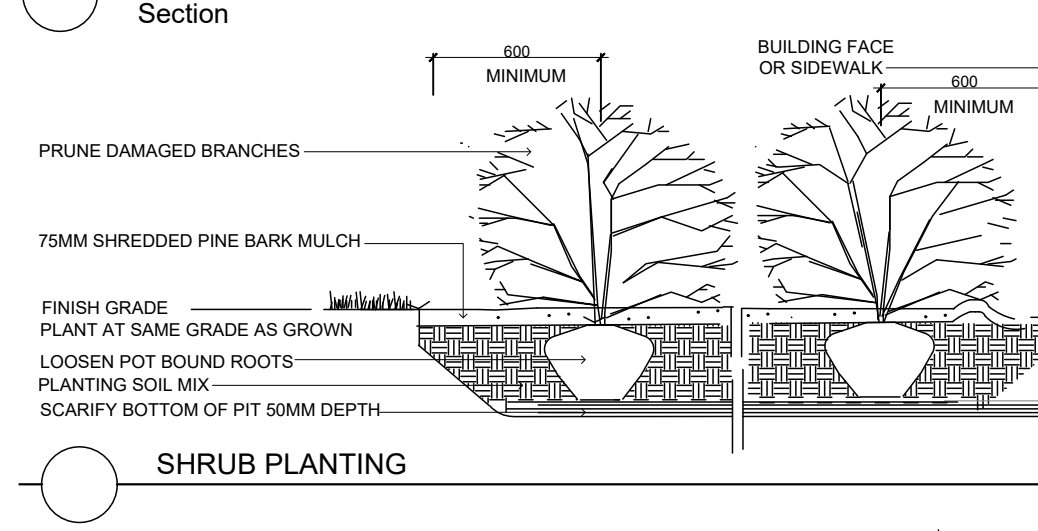
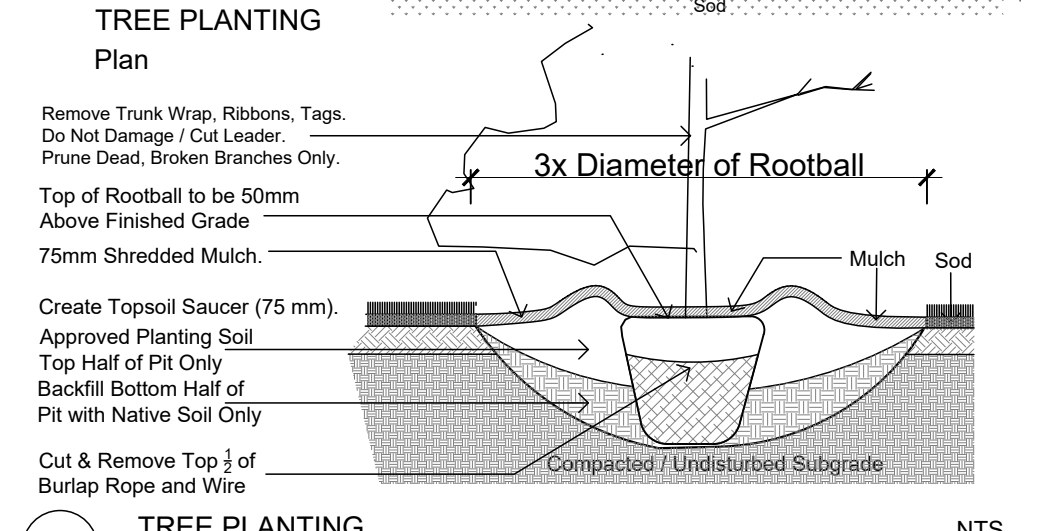
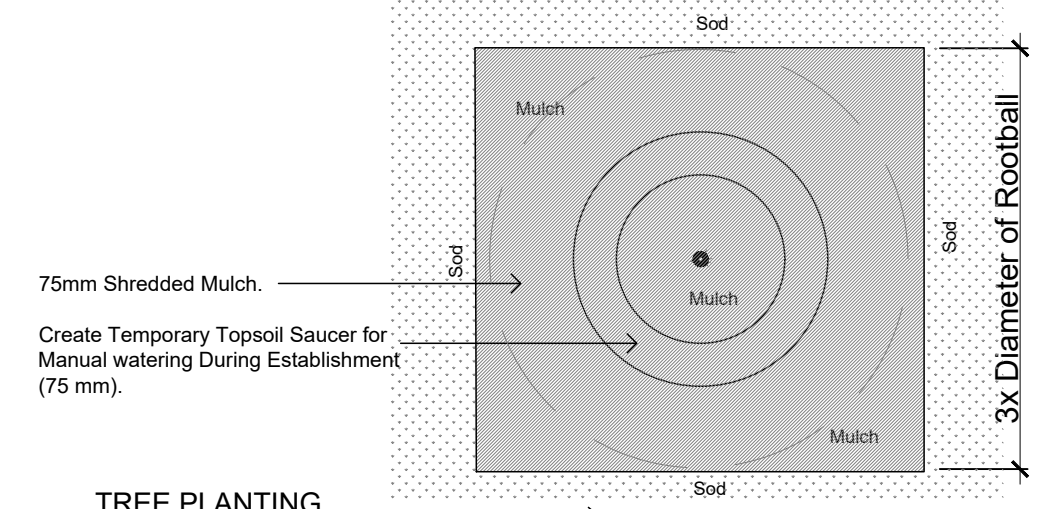
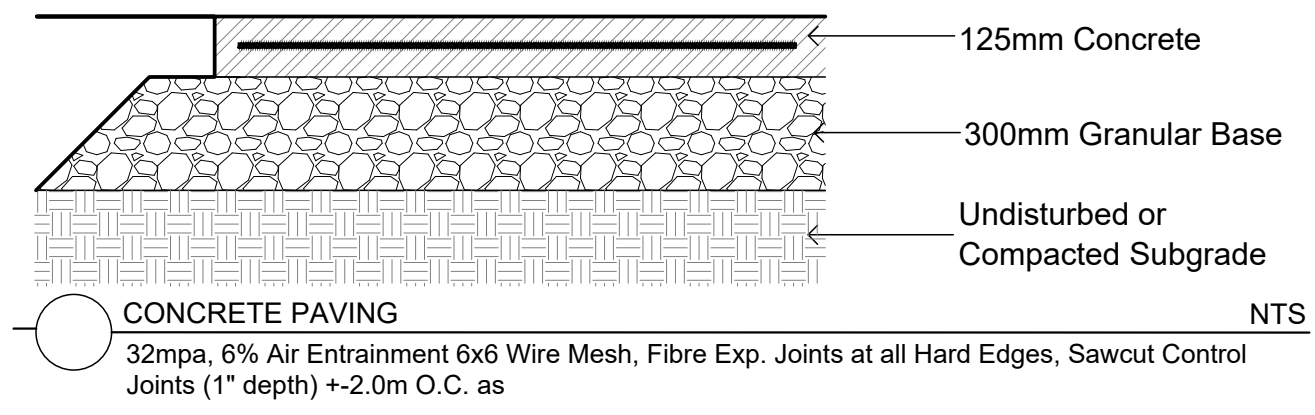


CONCRETE - FINISH LIGHT BROOM, WOOD FLOAT MAGNESIUM FLOAT:  
 ALL CONCRETE FINISHES TO BE APPROVED BY GJA LANDSCAPE ARCHITECT.  
 SAWCUT LAYOUT FOR ALL AREAS TO BE MARKED ON SITE IN RED CHALK, REVIEWED, ADJUSTED AND APPROVED BY GJA LANDSCAPE ARCHITECT PRIOR TO ANY CUTTING.  
 EXPANSION JOINT LAYOUT FOR ALL AREAS TO BE LAID OUT ON SITE - REVIEWED, ADJUSTED AND APPROVED BY GJA LANDSCAPE ARCHITECT PRIOR TO ANY CONCRETE POURING.  
 PROVIDE COLD JOINT DETAIL at End of Previous Pour/Beginning of New Pour, C/W REBAR DOWELS 500mm O.C.  
 FINISH: TOOL EDGE FIRST, THEN WIPE OFF TOOL MARKS WHILE APPLYING FINISH.



Drawing Remains the Property of/Copyright Reserved by GJA INC. Do Not Use or Reproduce Without Approval of GJA INC. NOT To Be Used For Construction Unless indicated by Revision: "FOR LANDSCAPE CONSTRUCTION". Contractor is Responsible for Verification of Site Locations of all Utilities. Report any Discrepancies Between Site and Drawing Immediately to GJA INC. Do NOT Proceed Until Clarified.

TURF AREAS TO BE SOD C/W 150MM DEPTH TOPSOIL ON APPROVED SUBGRADE | SOD TO BE #1 GRADE TURFGRASS NURSERY SOD per NSGA - Fine Fescue/Kentucky Bluegrass Sod | PLANTING MIX TO BE APPROVED BY LANDSCAPE ARCHITECT | PLANT MATERIAL TO MEET CNLA STANDARDS/BE APPROVED BY LANDSCAPE ARCHITECT PRIOR TO PLANTING | ALL MATERIALS & WORK TO BE MAINTAINED UNTIL FINAL ACCEPTANCE. (MOWING TURF, WEEDING BEDS, WATERING TURF & PLANTS) & INCLUDE 1 YEAR WARRANTY FROM DATE OF FINAL ACCEPTANCE | PROVIDE WATERING OF ALL PLANT MATERIAL AS REQUIRED FOR PROPER ESTABLISHMENT UNTIL END OF WARRANTY PERIOD | REFER TO CIVIL ENGINEER'S DRAWING FOR ELEVATIONS / GRADING |

The Landscape Plan is to be read in conjunction with the grading, servicing, site and survey plan | Bare root material to be planted in season only | All plant material locations to be stated on site by the landscape contractor and checked by the landscape architect prior to planting | All trees to be preserved on or directly adjacent to the site will be protected | Plant material are to be installed a minimum of; 3.0m away from any part of any hydro transformer, 3.0m corridor between a fire hydrant and the curb, a 2.5m radius beside or behind a fire hydrant, 2.0m from any servicing/utility line or structure |

REFER TO TCR BY IFS

Existing Tree - Refer to TCR by IFS for Details/Actions

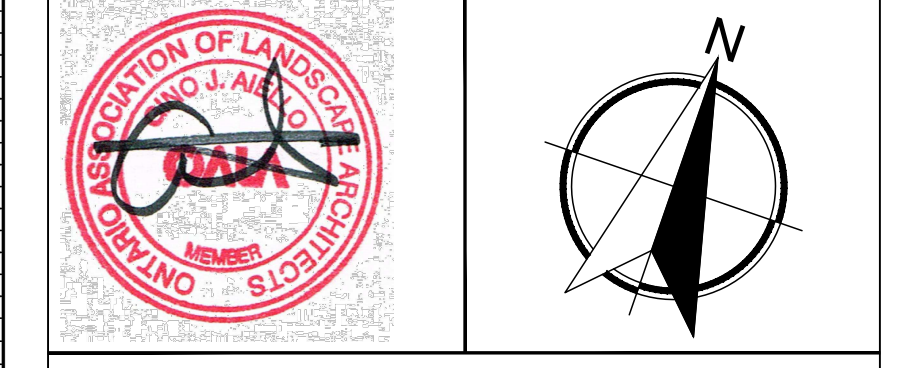
LANDSCAPE PLAN LEGEND

- Proposed Coniferous Tree
- Proposed Deciduous Tree
- Proposed Planting Bed
- Proposed Pedestrian Paving
- Proposed Concrete Paving

BELOW GRADE SERVICES REFER TO CIVIL /CUP

- WTR U/G Water Service
- STM U/G Storm Service
- SAN U/G Sanitary Service
- GAS U/G Gas Service
- BC U/G TelCo Service
- H U/G Hydro Service
- OHW O/H Hydro Service
- Fire Hydrant
- FD Siamese Connection
- Light Standard Base

1	SITE PLAN CONTROL SUBMISSION 1	MAY 20 2022
0	REVIEW/COORDINATION	MAY 13 2022
#	Revision	Date

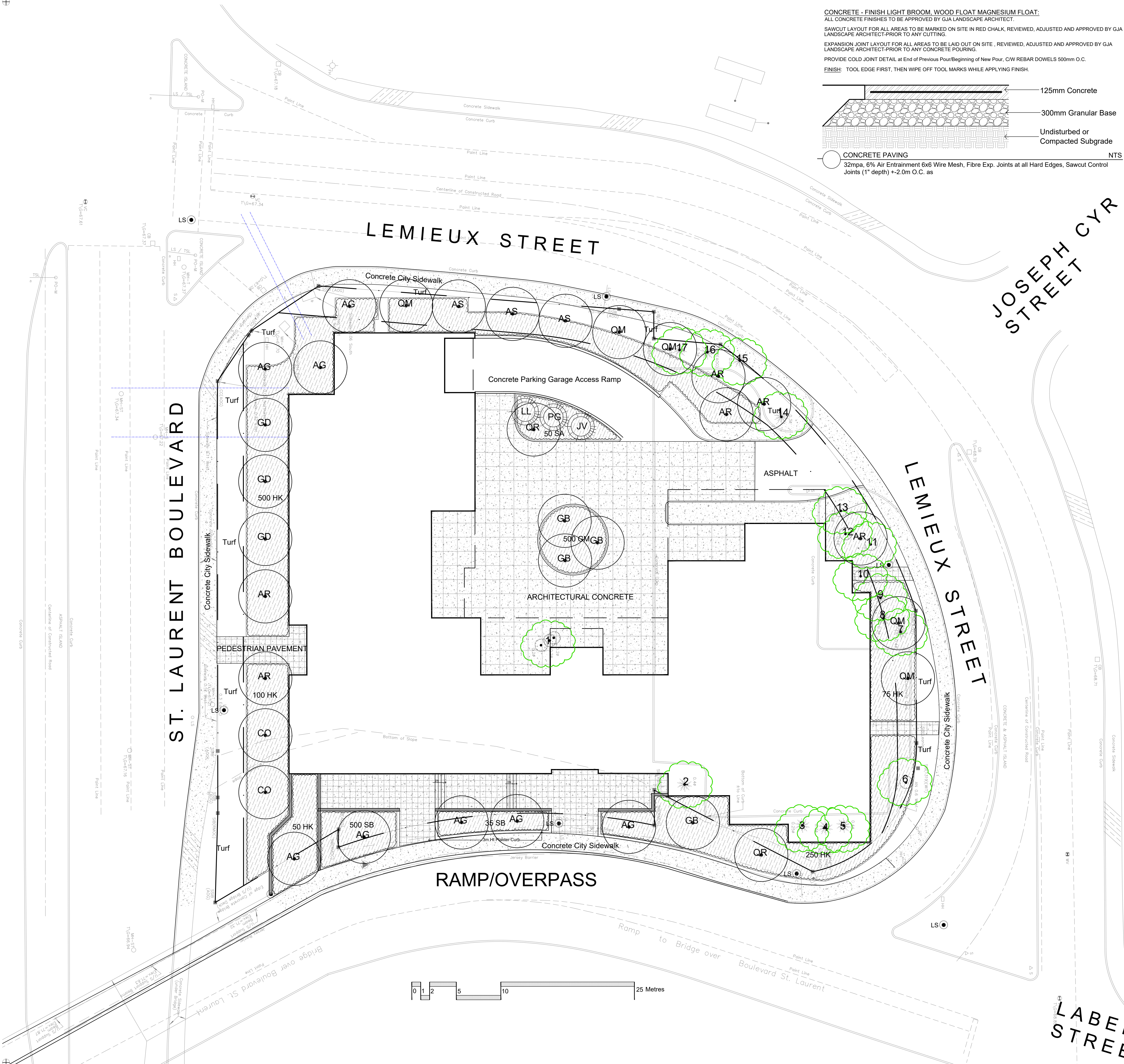


Property Owner  
**1209 ST. LAURENT BLVD. INC.**  
 900-2000 PEEL STREET MONTREAL H3A 2W5

Gino J. Aiello | landscape architect GJALA.com  
 GJA INC. Gino@GJALA.com (513) 286 5130  
 110 Dorebury Road Unit #9 1 Ottawa Ontario K1Z 0C2

Project  
**MULTI UNIT RESIDENTIAL BUILDING**  
 1209 ST. LAURENT BOULEVARD

Landscape Plan  
 Scale: 1:200 Sheet Number  
 City of Ottawa  
 Dwg - ##### **L1** D07



Code	Qty.	Botanical Name	Common Name	Size	Condition
AC		Ametanther canadensis	Tree Serviceberry	50mm cal	B + B specimen
AG		Aspidosiphon glabra	Onion Barkshrub	60mm cal	B + B specimen
AR		Acer rubrum	Red Maple	60mm cal	B + B specimen
AS		Acer saccharum	Sugar Maple	60mm cal	B + B specimen
BP		Betula papyrifera	Paper Birch	60mm cal	B + B specimen
CD		Celtis occidentalis	Common Hackberry	60mm cal	B + B specimen
DB		Cornus sericea	Grey Dogwood	60mm cal	B + B specimen
CG		Cornus rugosa	Thornless Cockspur Hawthorn	60mm cal	B + B specimen
GB		Gonolobus virginicus	Madderhair Tree	70mm cal	B + B specimen
GD		Gymnocladia dioica	Kentucky Coffee Tree	60mm cal	B + B specimen
IN		Juglans nigra	Black Walnut	60mm cal	B + B specimen
ML		Malus 'Honey Gold'	Honey Gold Crabapple	60mm cal	B + B specimen
MR		Malus 'Red Spire'	Red Spire Crabapple	60mm cal	B + B specimen
MNR		Malus 'Royal Raindrops'	Royal Raindrops Crabapple	60mm cal	B + B specimen
MS		Malus 'Red Spire'	Red Spire Crabapple	60mm cal	B + B specimen
OV		Ostrya virginiana	Hoopshornbeam	60mm cal	B + B specimen
DM		Quercus macrocarpa	Bur Oak	60mm cal	B + B specimen
GP		Quercus prinus	Pink Oak	60mm cal	B + B specimen
GR		Quercus rubra	Red Oak	60mm cal	B + B specimen
IS		Ipomoea pedunculata	Ipomoea Tree Lilac	60mm cal	B + B specimen
VL		Viburnum lentago	Nannyberry	60mm cal	B + B specimen
AB		Abies balsamea	Balsam Fir	1.5m Ht.	B + B specimen
AC		Abies concolor	Silver Fir	1.5m Ht.	B + B specimen
EV		Eugenia caryophyllata	Eastern Red Cedar	1.5m Ht.	B + B specimen
LL		Larix laricina	Eastern Larch / Tamarac	1.5m Ht.	B + B specimen
PAV		Pinus aristata	Bristlecone Pine	1.5m Ht.	B + B specimen
PC		Pinus canadensis	Swiss Stone Pine	1.5m Ht.	B + B specimen
PI		Pinus flexilis	Lumber Pine	1.5m Ht.	B + B specimen
PG		Pinus strobus	White Spruce	1.5m Ht.	B + B specimen
PR		Pinus resinosa	Red Pine	1.5m Ht.	B + B specimen
PS		Pinus strobus	White Pine	1.5m Ht.	B + B specimen

Code	Qty.	Botanical Name	Common Name	Size	Condition
SC		Sarcocornus canadensis	Sarcocornus	80cm Ht.	Pot
AU		Aucuba japonica	Bearberry	90cm Ht.	Pot
CA		Calamagrostis canadensis	Canada Bluegrass	150cm Ht.	Pot
DB		Dryopteris filix-mas	Common Bracken	80cm Ht.	Pot
HE		Hypericum perforatum	St. John's Wort	40cm Ht.	Pot
PA		Potentilla fruticosa	Shrub Potentilla	60cm Ht.	Pot
PF		Poa annua	Annual Ryegrass	50cm Ht.	Pot
SA		Saxifraga oppositifolia	Saxifrage	60cm Ht.	Pot
EA		Echinacea purpurea	Wildflower	60cm Ht.	Pot
SB		Spiraea bushiana	Dart's Red	60cm Ht.	Pot
SB		Spiraea bushiana	Anthony Water	60cm Ht.	Pot
OV		Ostrya virginiana	White Common Lilac	60cm Ht.	Pot
VL		Viburnum lentago	Nannyberry	80cm Ht.	Pot
PM		Pinus mugo var. pumilio	Mugo Pine	30cm sp.	Pot
TC		Taxus cuspidata 'Nana'	Dwarf Japanese Yew	60cm Ht.	Pot
TCM		Taxus cuspidata 'Momiol'	Emerald Spreader Yew	60cm Ht.	Pot

Code	Qty.	Botanical Name	Common Name	Condition
AU		Aucuba japonica	Bearberry	8cm Pot
CA		Calamagrostis canadensis	Canada Bluegrass	8cm Pot
EP		Echinacea purpurea	Wildflower	8cm Pot
GM		Geranium macrorrhizum	Geranium	8cm Pot
GP		Geranium psilostemon	Geranium	8cm Pot
PT		Parthenocissus vitacea	Boston Ivy	8cm Pot
IV		Plantain virginiana	Swish Grass	8cm Pot

