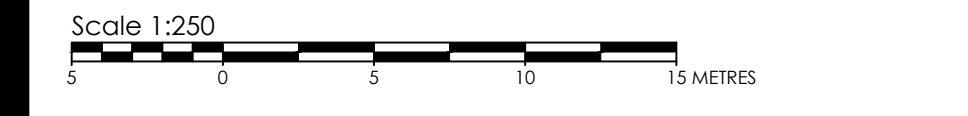


TOPOGRAPHIC SKETCH of
**PART OF LOT 23
CONCESSION 1 (OTTAWA FRONT)**
(GEOGRAPHIC TOWNSHIP OF NEPEAN)
CITY OF OTTAWA



METRIC CONVERSION
DISTANCES AND COORDINATES SHOWN ON THIS PLAN ARE IN METRES AND CAN BE CONVERTED TO FEET BY DIVIDING BY 3.048

BEARING NOTE
BEARINGS ARE GRID, DERIVED FROM CAN-NET VRS NETWORK GPS OBSERVATIONS ON NCC HORIZONTAL CONTROL MONUMENTS 19773035 AND 19680191, CENTRAL MERIDIAN, 76° 30' WEST LONGITUDE MTM ZONE 9, NAD83 (ORIGINAL).

19773035 N:5006040.42 E:324888.04
19680191 N:5033564.26 E:388064.94

ELEVATION NOTE
ELEVATIONS SHOWN HEREON ARE GEODETIC (CGVD-1928-1978) AND ARE DERIVED FROM THE CAN-NET VRS NETWORK MONUMENT: OTTAWA ELEVATION=95.230.

- UTILITY NOTES**
- THIS DRAWING CANNOT BE ACCEPTED AS ACKNOWLEDGING ALL OF THE UNDERGROUND UTILITIES AND IT WILL BE THE RESPONSIBILITY OF THE USER TO CONTACT THE RESPECTIVE AUTHORITIES FOR CONFIRMATION OF LOCATION.
 - BEFORE ANY WORK INVOLVING PROBING, EXCAVATING, ETC., A FIELD LOCATION OF UNDERGROUND PLANT BY THE PERTINENT UTILITY AUTHORITY IS MANDATORY.

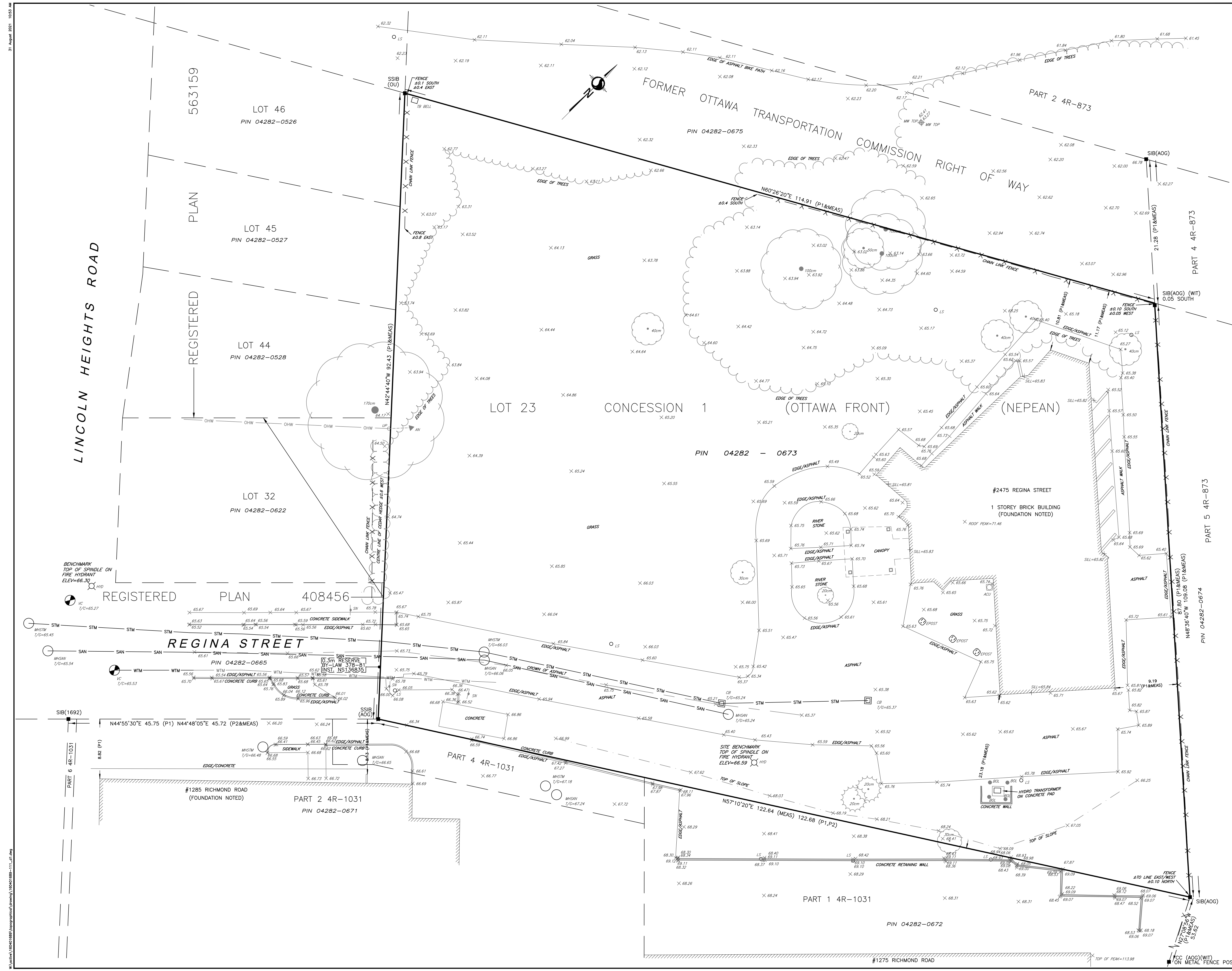
LEGEND

SYMBOL	DENOTES	DESCRIPTION
■	FOUND MONUMENTS	SET MONUMENTS
□	IRON BAR	STANDARD IRON BAR
▣	SHORT STANDARD IRON BAR	CUT CROSS
▤	CONCRETE PIN	WITNESS
○	PROPERTY IDENTIFICATION NUMBER	MEASURED
○	ORIGIN UNKNOWN	STANTEC GEOMATICS LTD.
○	PLAN BY ADV DATED OCTOBER 29, 2014	PLAN 4R-1031
○	AIR CONDITIONING UNIT	UTILITY POLE ANCHOR
○	BOLLARD	CATCH BASIN
○	DOUBLE CB	DITCH CB
○	CB MANHOLE	DOUBLE CB MANHOLE
○	SIDE INLET CB	CHIMNEY
○	VALVE CURB STOP	DRAIN
○	ELECTRICAL OUTLET	HYDRO TRANSFORMER
○	LIGHT STANDARD	MAINTENANCE HOLE SANITARY
○	MAINTENANCE HOLE STORM	MONITORING WELL
○	TERMINAL BOX - BELL	OVERHEAD UTILITY WIRES
○	UTILITY POLE	VALVE BOX
○	VALVE CHAMBER	WATER VALVE
○	TREE CONIFEROUS @ centimetres	
○	TREE DECIDUOUS @ centimetres	
○	SANITARY SEWER	
○	STORM SEWER	
○	WATERMAIN	

SURVEYOR'S CERTIFICATE
I CERTIFY THAT:
THE SURVEY WAS COMPLETED ON THE 23rd DAY OF JULY, 2021.

August 31, 2021
DATE
R.G. Bennett
R.G. BENNETT
ONTARIO LAND SURVEYOR

DRAWN: ME CHECKED: CJ/KC PM: CT FIELD: CA PROJECT NO.: 16040169-111
This plan was signed with a scanned signature as a result of the Emergency Order related to the COVID-19 pandemic.



31 August 2021 10:53 AM