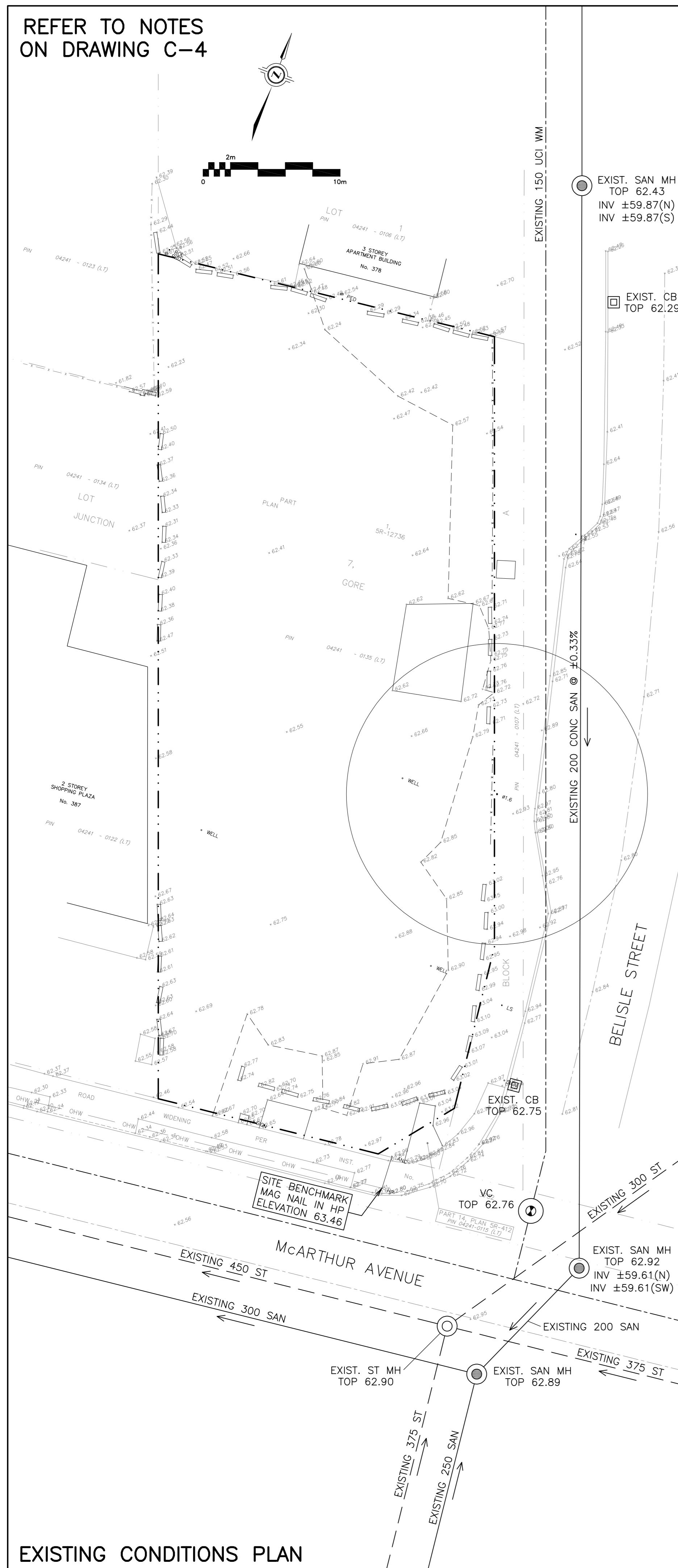
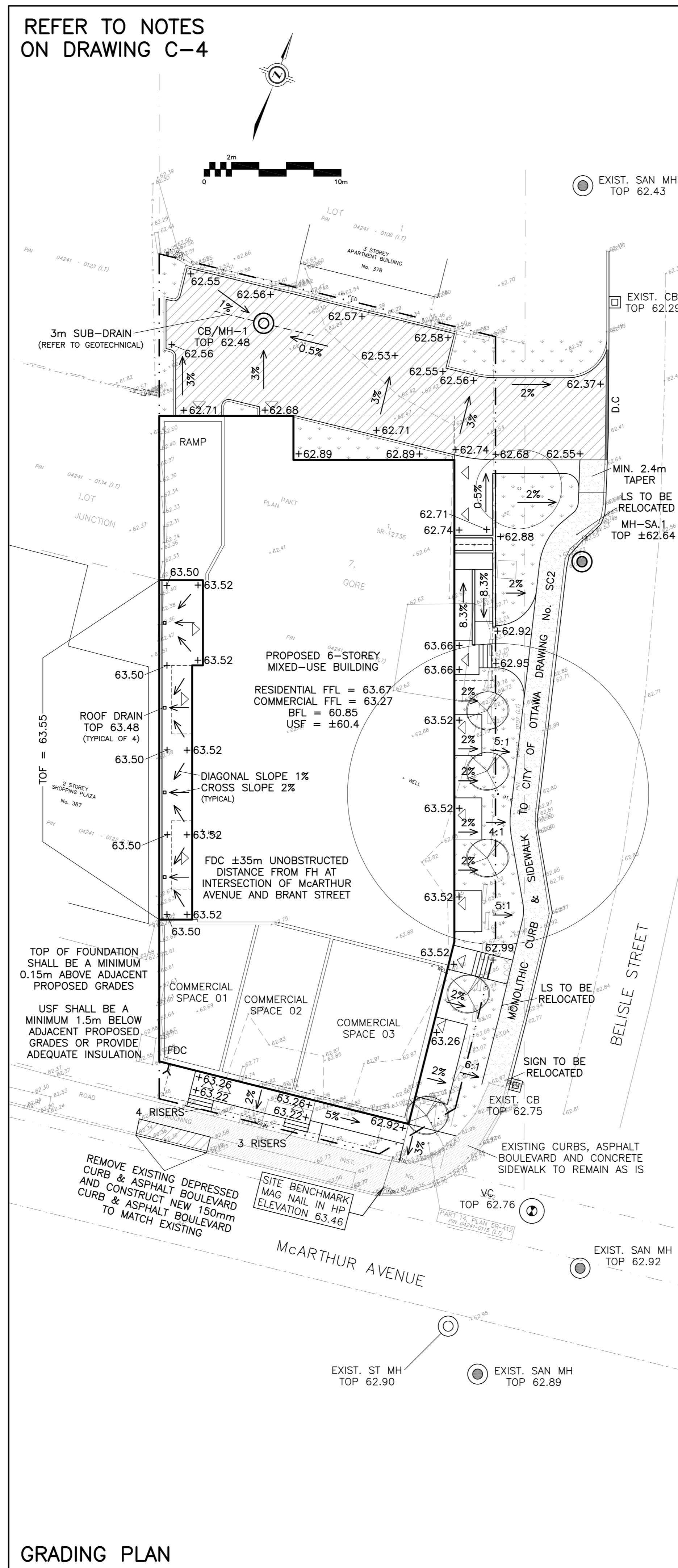


REFER TO NOTES
ON DRAWING C-4



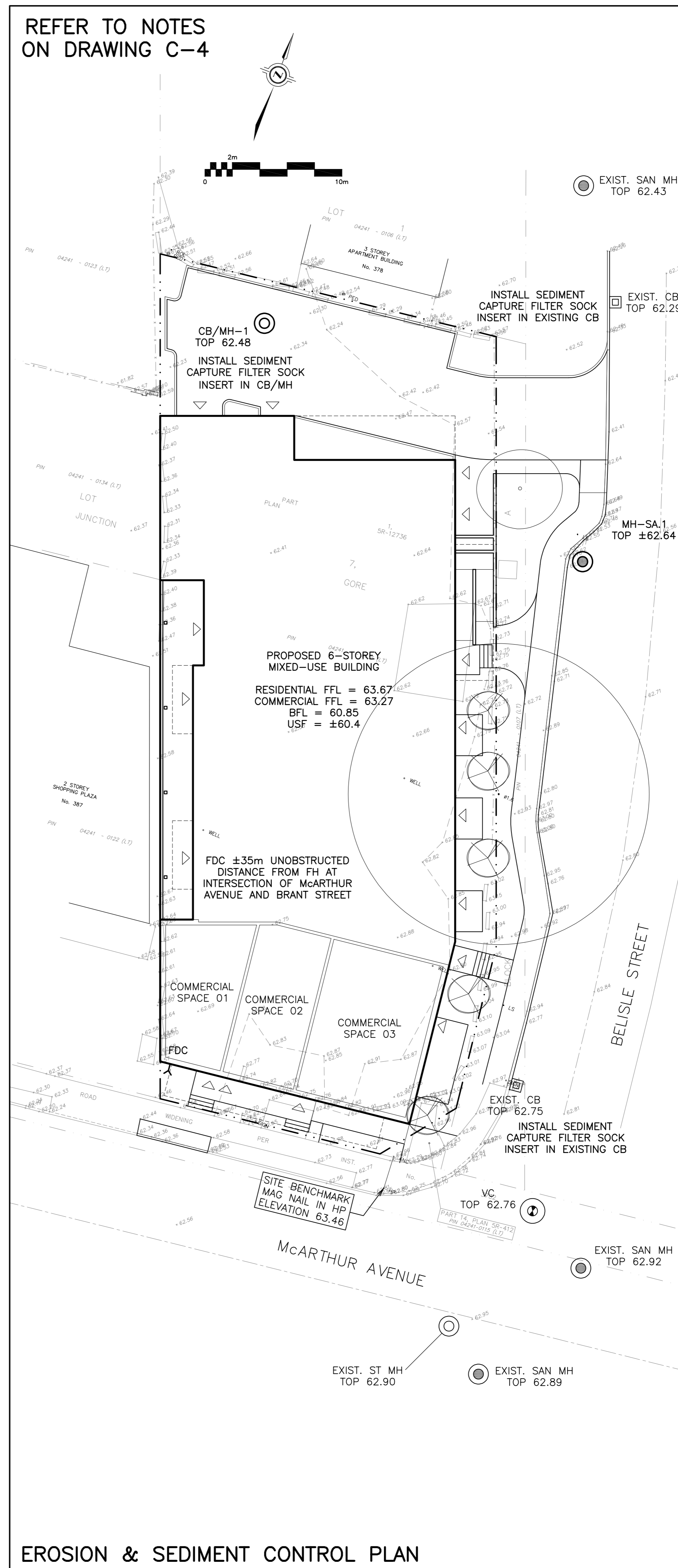
EXISTING CONDITIONS PLAN

REFER TO NOTES
ON DRAWING C-4



GRADING PLAN

REFER TO NOTES
ON DRAWING C-4

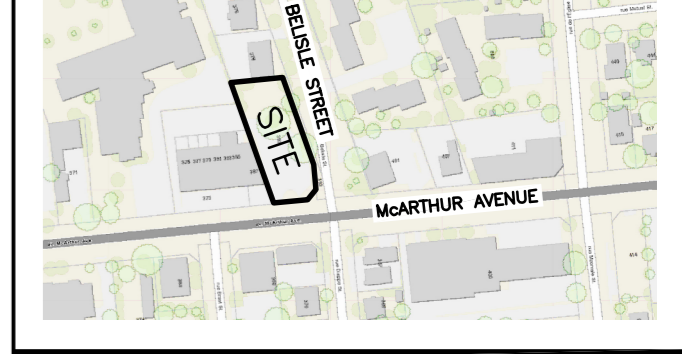


EROSION & SEDIMENT CONTROL PLAN

LEGEND

- FFL FINISHED FLOOR ELEVATION
- BFL BASEMENT FLOOR ELEVATION
- USF UNDERSIDE OF FOOTING
- PROPERTY LINE
- CB CATCH-BASIN
- MH STORM MANHOLE
- CB/MH CATCH-BASIN/MANHOLE
- MH SANITARY MANHOLE
- VC VALVE CHAMBER
- FDC FIRE DEPARTMENT CONNECTION
- EXISTING GRADE ELEVATION
- +--- PROPOSED GRADE ELEVATION
- 2% PROPOSED SLOPE OF GRADE
- 150mm BARRIER CURB
- D.C. DEPRESSED CURB
- /// PAVEMENT
- CONCRETE
- LANDSCAPE

KEY PLAN

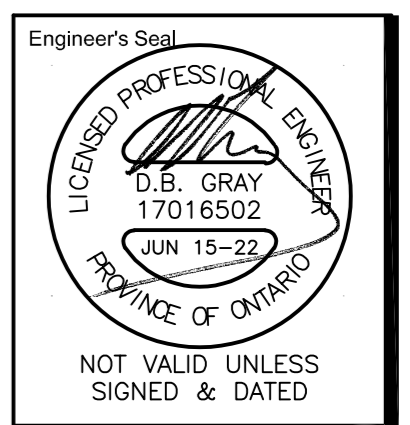


No.	DATE	REVISION
2	JUN 15-22	ISSUED FOR APPROVAL
1	APR 27-22	ISSUED FOR COORDINATION

D. B. GRAY ENGINEERING INC.
Stormwater Management - Grading & Drainage - Storm & Sanitary Sewers - Retention
700 Long Point Circle 613-425-8044
Ottawa, Ontario d.gray@dbgrayengineering.com

Project
**PROPOSED 6-STOREY
MIXED-USE BUILDING
393 McARTHUR AVENUE
OTTAWA, ONTARIO**

Drawing Title
**EXISTING CONDITIONS,
GRADING PLAN AND
SEDIMENT CONTROL PLAN**



Drawn D.B.G.
H. Scale 1:200
V. Scale
Date APR 27-22
Job No. 21111

Drawing No.
**C-2
of 4**