

PLAN OF SURVEY WITH TOPOGRAPHY OF PART OF LOT 8 CONCESSION 4 RIDEAU FRONT GEOGRAPHIC TOWNSHIP OF GLOUCESTER CITY OF OTTAWA

McINTOSH PERRY SURVEYING INC.
SCALE 1 : 200

THE INTENDED PLOT SIZE OF THIS PLAN IS 762mm IN WIDTH BY 609mm IN HEIGHT WHEN PLOTTED AT A SCALE OF 1 : 200.

METRIC :
DISTANCES AND COORDINATES SHOWN ON THIS PLAN ARE IN METRES AND CAN BE CONVERTED TO FEET BY DIVIDING BY 0.3048.

SURVEYOR'S CERTIFICATE

- I CERTIFY THAT:
- THIS SURVEY AND PLAN ARE CORRECT AND IN ACCORDANCE WITH THE SURVEYS ACT, THE SURVEYORS ACT AND THE LAND TITLES ACT AND THE REGULATIONS MADE UNDER THEM.
 - THE SURVEY WAS COMPLETED ON THE 10TH DAY OF MAY, 2022.

DATE MAY 31, 2022
John Gauthier
JOHN GAUTHIER
ONTARIO LAND SURVEYOR

THIS PLAN OF SURVEY RELATES TO AOLS PLAN SUBMISSION FORM NUMBER V-25779.

LEGEND AND NOTES

SYMBOL	DENOTES	DESCRIPTION
□	DENOTES	MONUMENT PLANTED
■	"	MONUMENT FOUND
SIB	"	STANDARD IRON BAR
SSIB	"	SHORT STANDARD IRON BAR
IB	"	IRON BAR
RIB	"	ROUND IRON BAR
WT	"	WITNESS
TBM	"	TEMPORARY BENCHMARK
P1	"	SRPR BY MCINTOSH PERRY SURVEYING INC. DATED FEBRUARY 23, 2022
P2	"	PLAN 4R-12764
P3	"	PLAN SR-8604
P4	"	PLAN OF TOPOGRAPHIC SURVEY BY FAIRHALL MOFFATT & WOODLAND LTD. DATED MAY 10, 2010
m	"	MEASURED
647	"	H.R. FARLEY SURVEYING LTD.
1175	"	H.A. KEN SHIPMAN SURVEYING LTD.
1319	"	W.J. WEBSTER O.L.S.
AOG	"	ANNIS O'SULLIVAN VOLLEBECK LTD. O.L.S.
OU	"	ORIGIN UNKNOWN
BF	"	BOARD FENCE
CLF	"	CHAIN LINK FENCE
PF	"	PLASTIC FENCE
BOL	"	BOLLARD
DS	"	DOOR SILL ELEVATION
LS	"	LAMP STANDARD
B&H	"	TELEPHONE & POWER UTILITY POLE
AN	"	ANCHOR
WV	"	WATER VALVE
FH	"	FIRE HYDRANT
MH SAN	"	MAINTENANCE HOLE - SANITARY
CB	"	CATCH BASIN
T/G	"	MAINTENANCE HOLE - SANITARY
ORP	"	OBSERVED REFERENCE POINT
(st)	"	STONE NOTED
(fn)	"	FOUNDATION NOTED
(sn)	"	SIDING NOTED
—	"	GATE
—	"	OVERHEAD WIRES
○	"	SIGN
○	"	TREE

DISTANCES:

DISTANCES SHOWN ON THIS PLAN ARE GROUND DISTANCES AND CAN BE USED TO COMPUTE GRID DISTANCES BY MULTIPLYING BY A COMBINED SCALE FACTOR OF 0.999947.

ELEVATIONS:

ELEVATIONS ARE CANADA GEODETIC VERTICAL DATUM 1928-1978 ADJUSTMENT DERIVED BY REAL TIME NETWORK GPS OBSERVATIONS REFERENCED TO THE CANADA HT_2 GEOD MODEL.

THE CONTOUR INTERVAL IS 0.20 METRES.

BENCHMARKS:

TOPOGRAPHIC INFORMATION DERIVED FROM FIELD SURVEY BY MCINTOSH PERRY SURVEYING INC. (MPSI). THIS FIELD WORK WAS COMPLETED ON THE 10TH DAY OF MAY, 2022.

TEMPORARY SITE BENCHMARK #1 - NAIL & WASHER IN POLE, HAVING AN ELEVATION OF 95.59m.

TEMPORARY SITE BENCHMARK #2 - TOP OF SPINDLE ON FIRE HYDRANT, HAVING AN ELEVATION OF 95.70m.

BEARINGS:

BEARINGS ARE WTM GRID BEARINGS, DERIVED BY REAL TIME NETWORK GPS OBSERVATIONS ON OBSERVED REFERENCE POINTS 'A' AND 'B' SHOWN HEREON, AND ARE REFERRED TO THE NAD83 ORIGINAL MTM ZONE 9 COORDINATE SYSTEM.

FOR THE PURPOSE OF COMPARISON, A ROTATION OF 0°13'40" COUNTER-CLOCKWISE HAS BEEN APPLIED TO BEARINGS ON PLAN 5R-8604 AND PLAN 4R-12764.

INTEGRATION DATA:

OBSERVED REFERENCE POINTS (ORP) DERIVED FROM GPS OBSERVATIONS USING REAL TIME NETWORK (RTN) SERVICE
NAD83 ORIGINAL, MTM ZONE 9
COORDINATES TO URBAN ACCURACY PER SEC. 14 (2) OF O.REG. 216/10

POINT ID	NORTHING	EASTING
ORP 'A'	5023413.92	372683.29
ORP 'B'	5023459.46	372760.26

COORDINATES CANNOT, IN THEMSELVES, BE USED TO RE-ESTABLISH CORNERS OR BOUNDARIES SHOWN ON THIS PLAN.

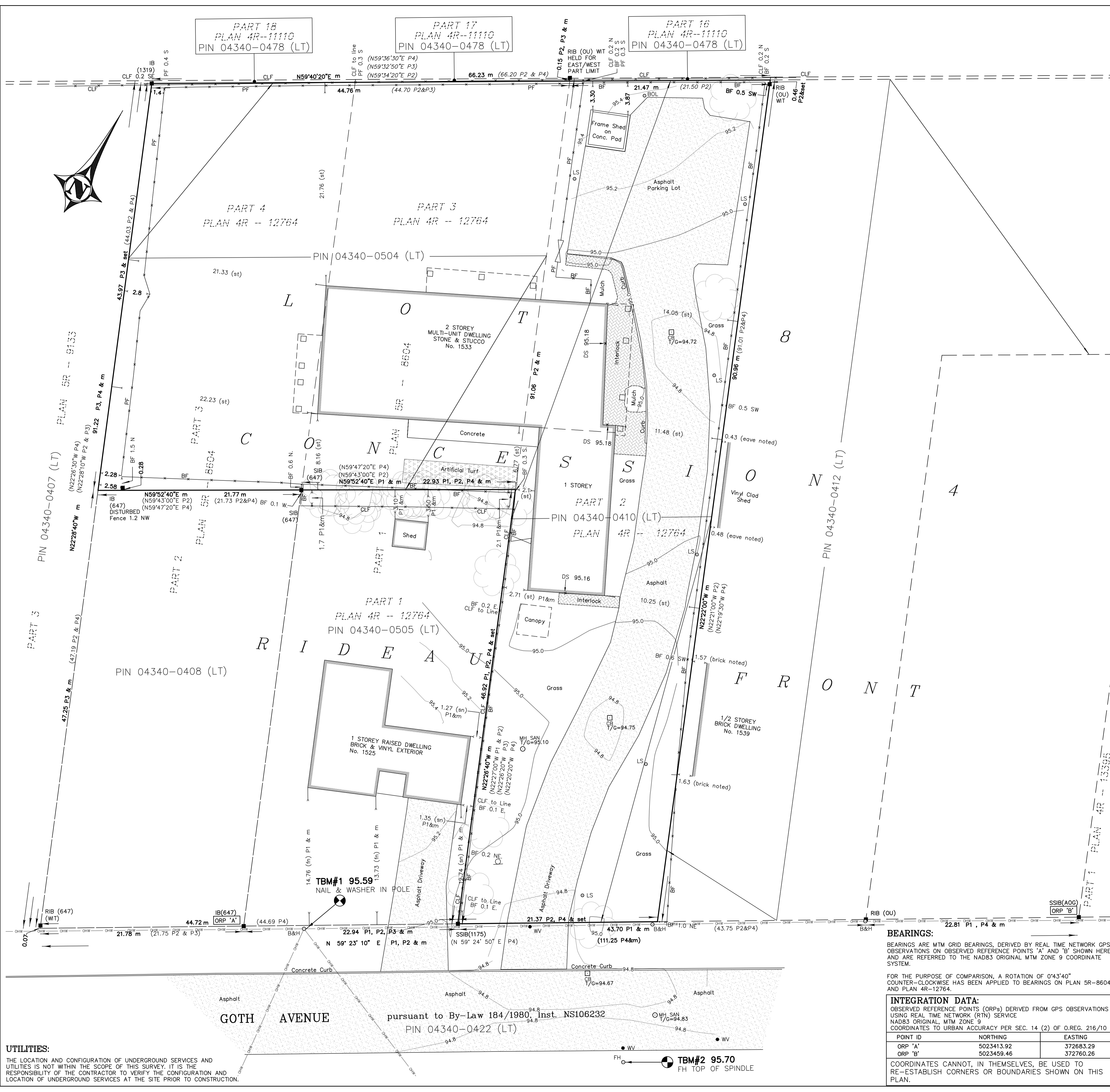
JOB No. 22-3699 DRAWING # 22-3699 Goth Ave-2.dwg

PREPARED FOR: MPCE

McINTOSH PERRY SURVEYING INC.

3240 Drummond Con. 5A, R.R. #7, Perth, ON K7H 3C9
Tel: 613-267-6524 Fax: 613-267-7992
www.mcintoshperry.com

EXAMINED: JG CAD: PC, CC



UTILITIES:
THE LOCATION AND CONFIGURATION OF UNDERGROUND SERVICES AND UTILITIES IS NOT WITHIN THE SCOPE OF THIS SURVEY. IT IS THE RESPONSIBILITY OF THE CONTRACTOR TO VERIFY THE CONFIGURATION AND LOCATION OF UNDERGROUND SERVICES AT THE SITE PRIOR TO CONSTRUCTION.

TBM#2 95.70
FH TOP OF SPINDLE