

PART OF LOT 4
CONCESSION 4 (OTTAWA FRONT)
(Geographic Township of Gloucester)
CITY OF OTTAWA

Surveyed by Annis, O'Sullivan, Vollebek Ltd.

Scale 1:250



Metric
DISTANCES SHOWN ON THIS PLAN ARE IN METRES AND
CAN BE CONVERTED TO FEET BY DIVIDING BY 0.3048

Surveyor's Certificate

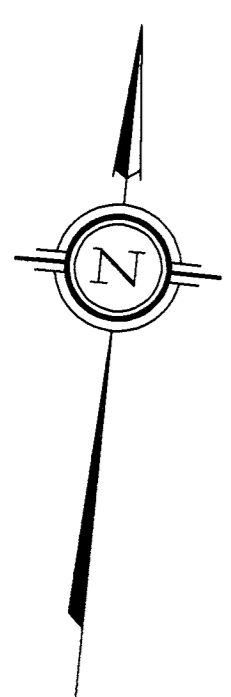
I CERTIFY THAT:
1. This survey and plan are correct and in accordance with the Surveys Act, the Surveyors Act and the regulations made under them.
2. The survey was completed on July 6, 2022.

July 22, 2022
Date

Tyler J. Allison
Ontario Land Surveyor

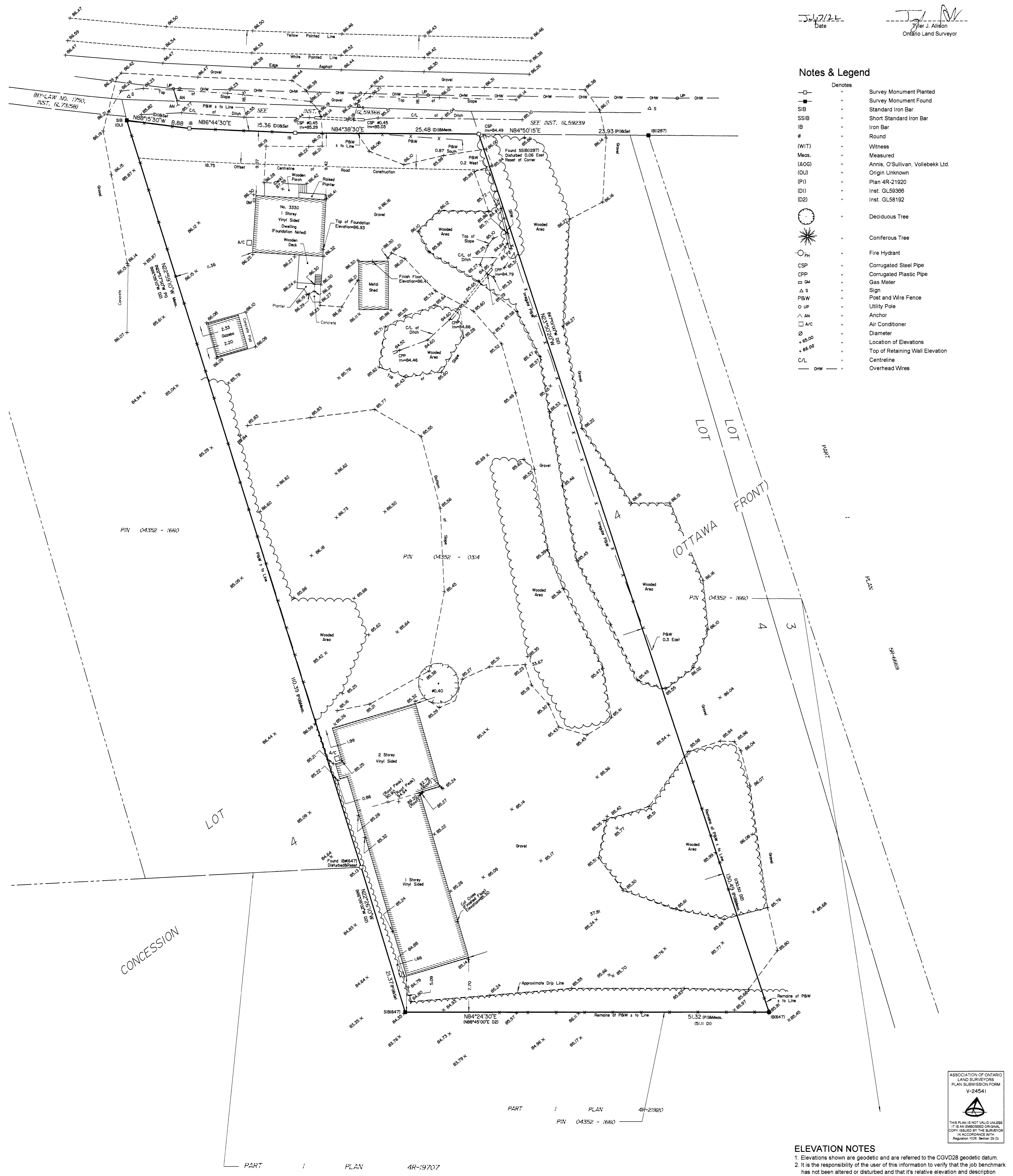
Notes & Legend

Denotes table with symbols and descriptions for survey monuments, trees, and utility lines.



SITE BENCHMARK #1
Fire Hydrant-Top of Spindle
Elevation=86.90

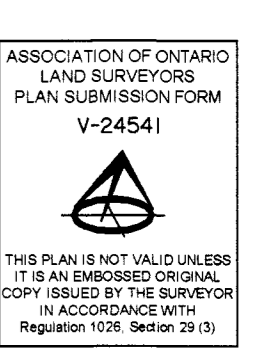
KNOWN AS NAVAN ROAD (Regional Road No. 28)
(Formerly Cyrville Navan Road, Bearbrook Road)
PIN 04352 - 0443



CONCESSION

LOT 4
OTTAWA FRONT

PART 1 PLAN 4R-19707
PIN 04352 - 1660



ELEVATION NOTES
1. Elevations shown are geodetic and are referred to the CGVD28 geodetic datum.
2. It is the responsibility of the user of this information to verify that the job benchmark has not been altered or disturbed and that its relative elevation and description agrees with the information shown on this drawing.

UTILITY NOTES
1. This drawing cannot be accepted as acknowledging all of the utilities and it will be the responsibility of the user to contact the respective utility authorities for confirmation.
2. Only visible surface utilities were located.
3. A field location of underground plant by the pertinent utility authority is mandatory before any work involving breaking ground, probing, excavating etc.

Bearings are grid, derived from Can-Net 2016 Real Time Network GPS observations and are referred to the Central Meridian of MTM Zone 9 NAD-83 (CSRS) (2010.0).
For bearing comparisons, a rotation of 0°52'30" counter-clockwise was applied to bearings on Plan (D1).

ANNIS, O'SULLIVAN, VOLLEBEK LTD.
165 Bay Street
Embrun, Ont. K0A 1W1
Phone: (613) 443-3384
Email: Embrun@aosllv.com