

Scale 1:100
 Metric
 DISTANCES SHOWN ON THIS PLAN ARE IN METRES AND CAN BE CONVERTED TO FEET BY DIVIDING BY 0.3048

Surveyor's Certificate
 I CERTIFY THAT:
 1. This survey and plan are correct and in accordance with the Survey Act and the Surveyors Act and the regulations made under them.
 2. The survey was completed on the 8th day of November, 2021.

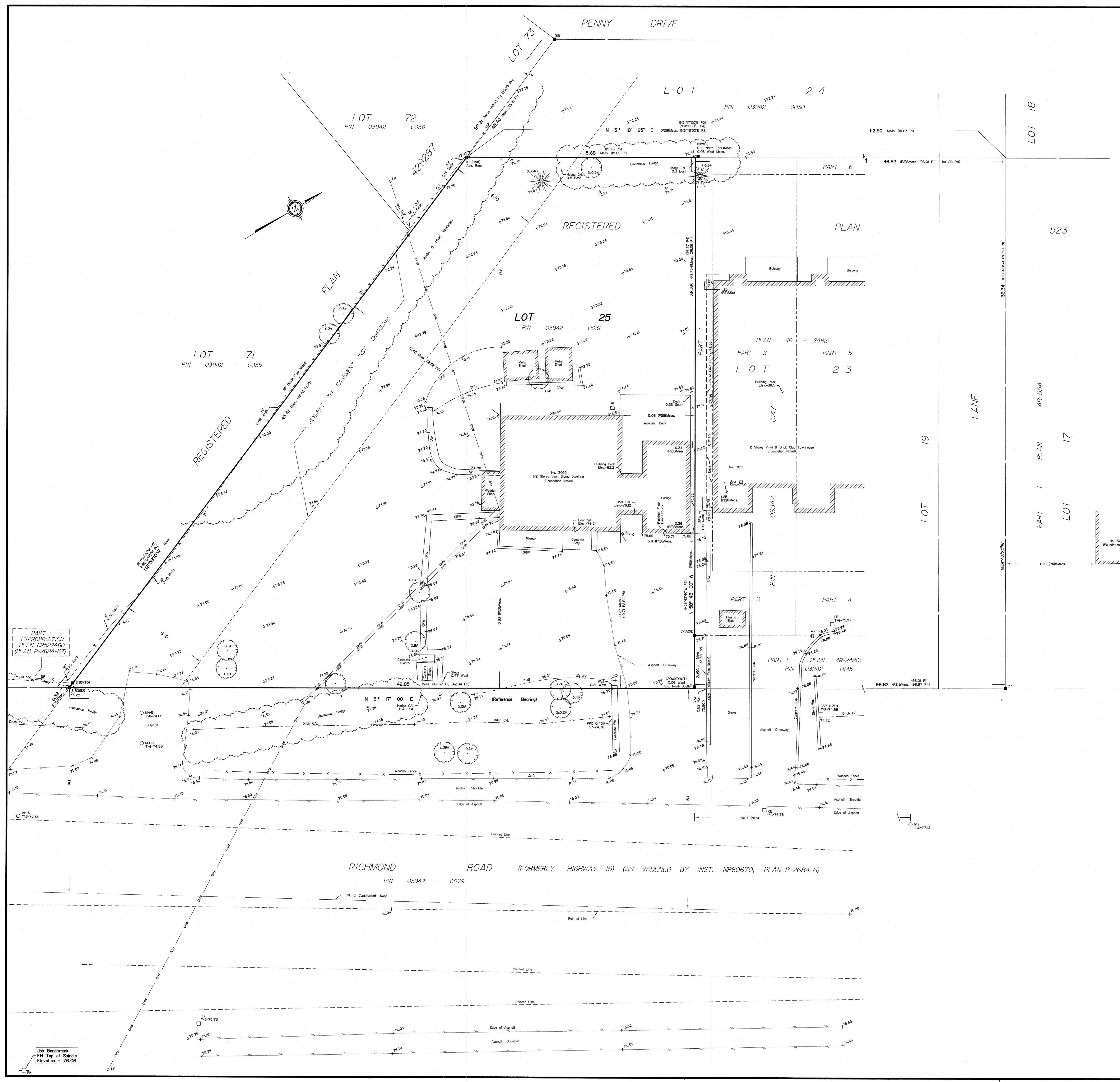
November 17, 2021
 Date
 Andrew J. Brotham
 Ontario Land Surveyor

PART 2
 THIS PLAN MUST BE READ IN CONJUNCTION WITH SURVEY REPORT DATED, November 17, 2021

ANNIS, O'SULLIVAN, VOLLEBEK LTD. grants to Fairfax Family Wealth Corp. ("The Client"), their solicitors, mortgagees, and other related parties, permission to use original, signed, sealed copies of the Surveyor's Real Property Report in transactions involving The Client.

- Notes & Legend**
- | | |
|--------|----------------------------------|
| —□— | Survey Monument Planted |
| —■— | Survey Monument Found |
| SIB | Standard Iron Bar |
| SSIB | Short Standard Iron Bar |
| IB | Iron Bar |
| CP | Concrete Pin |
| (WIT) | Witness |
| Meas. | Measured |
| Acc. | Accepted |
| (AOG) | Annis, O'Sullivan, Vollebek Ltd. |
| (P1) | Registered Plan 523 |
| (P2) | (AOG) Plan November 12, 2010 |
| (P3) | Expropriation Plan CR522460 |
| (P4) | (1319) Plan September 27, 1988 |
| (P5) | (847) Plan January 11, 1985 |
| ○ M-S | Maintenance Hole (Storm Sewer) |
| ○ M-S | Maintenance Hole (Sanitary) |
| ○ M-B | Maintenance Hole (Bell) |
| ○ M-U | Maintenance Hole (Unidentified) |
| —OW— | Overhead Wires |
| ○ UP | Utility Pole |
| ○ | Deciduous Tree |
| ★ | Coniferous Tree |
| CLF | Chain Link Fence |
| BF | Board Fence |
| △ S | Sign |
| □ AC | Air Conditioner |
| Ø | Diameter |
| +65.00 | Location of Elevations |
| +65.00 | Top of Retaining Wall |
| C/L | Centreline |
| BOS | Bottom of Slope |
| TOS | Top of Slope |
| CRW | Concrete Retaining Wall |
| SRW | Stone Retaining Wall |
| ○ FH | Fire Hydrant |
| ○ W | Water Valve |
| NTS | Not to Scale |
| L/S | Underside |

Bearings are grid, derived from Can-Net 2016 Real Time Network GPS observations, MTM Zone 9 (76°30' West Longitude) NAD-83 (original).
 For bearing comparisons, a rotation of 0°10'00" counter-clockwise was applied to bearings on P2, a rotation of 0°10'40" counter-clockwise was applied to bearings on P4, a rotation of 0°25'10" counter-clockwise was applied to bearings on P5.



Job Benchmark
 FH Top of Spindle
 Elevation = 76.06