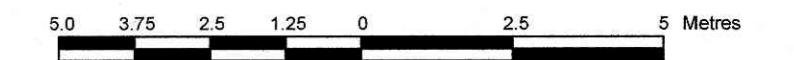


LOTS 2, 3, 4, 5 AND PART OF LOT 6 REGISTERED PLAN 220 CITY OF OTTAWA

Surveyed by Annis, O'Sullivan, Vollebek Ltd.

Scale 1 : 125



Metric

DISTANCES SHOWN ON THIS PLAN ARE IN METRES AND CAN BE CONVERTED TO FEET BY DIVIDING BY 0.3048

Surveyor's Certificate

- I CERTIFY THAT: 1. This survey and plan are correct and in accordance with the Surveys Act and the Regulations made under them. 2. The survey was completed on the 6th day of July, 2022.

Date July 21, 22

T. Hartwick Ontario Land Surveyor

Bearings are grid, derived from Can-Net 2016 Real Time Network GPS observations, and are referenced to Specified Control Points 01919880105 and 019198434761, MTM Zone 9 (76°30' West Longitude) NAD-83 (original).

For bearing comparisons, a rotation of 0°12'50" counter-clockwise was applied to bearings on plan P7, and a rotation of 0°24'40" counter-clockwise was applied to bearings on plan P8.

ELEVATION NOTES

- 1. Elevations shown are geodetic and are referred to the CGVD28 geodetic datum, and are referred to city of Ottawa benchmark OTT 25, having an elevation of 69.613. 2. It is the responsibility of the user of this information to verify that the job benchmark has not been altered or disturbed and that its relative elevation and description agrees with the information shown on this drawing.

UTILITY NOTES

- 1. This drawing cannot be accepted as acknowledging all of the utilities and it will be the responsibility of the user to contact the respective utility authorities for confirmation. 2. Only visible surface utilities were located. 3. A field location of underground plant by the pertinent utility authority is mandatory before any work involving breaking ground, probing, excavating etc.

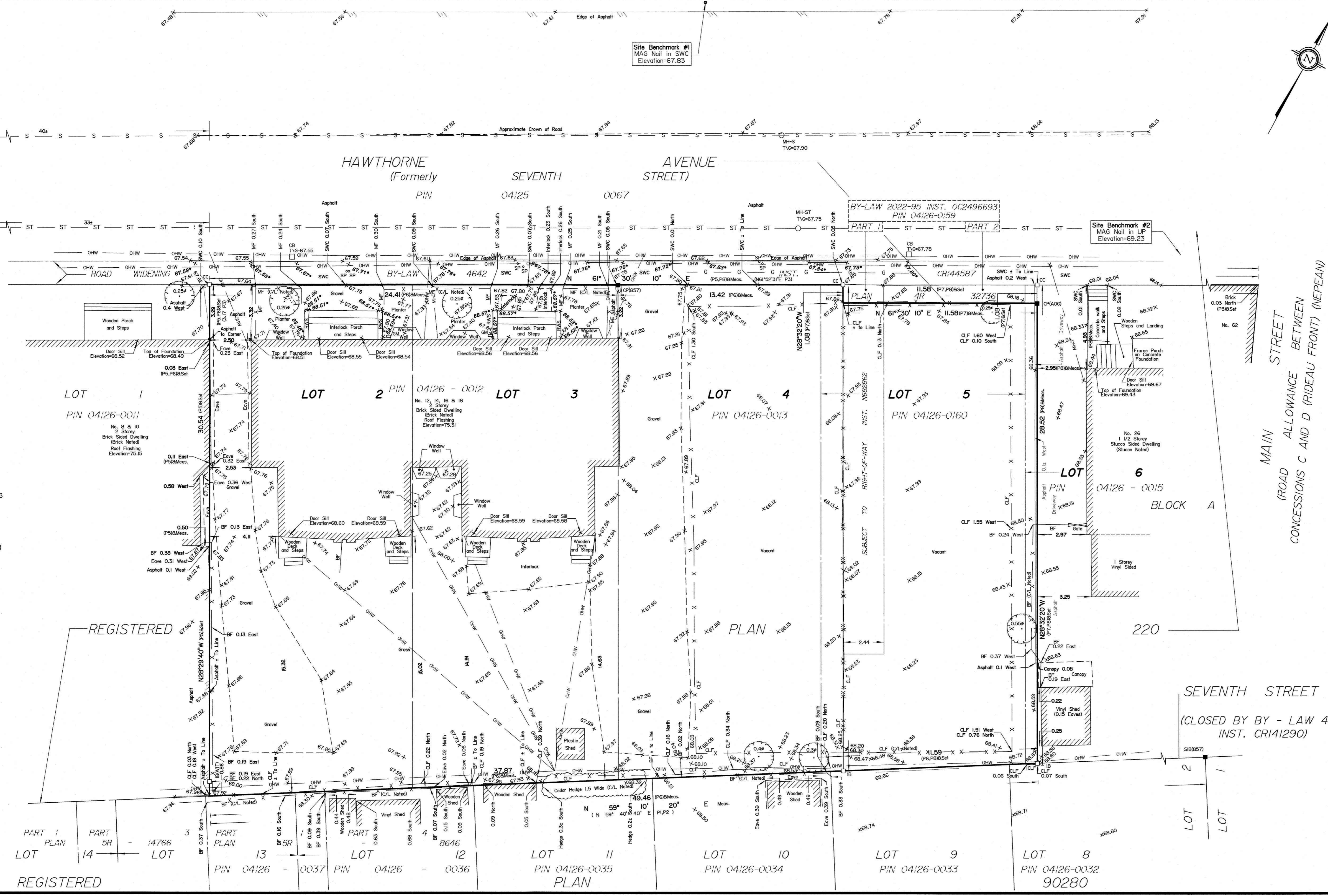
ASSOCIATION OF ONTARIO LAND SURVEYORS PLAN SUBMISSION FORM V-27719

THIS PLAN IS NOT VALID UNLESS IT IS AN EMBOSSED ORIGINAL COPY ISSUED BY THE SURVEYOR In accordance with Regulation 1026, Section 29 (3).

ANNIS, O'SULLIVAN, VOLLEBEK LTD. 14 Concourse Gate, Suite 500 Nepean, Ont. K2E 7S6 Phone: (613) 727-0850 / Fax: (613) 727-1079 Email: Nepean@aosvltd.com Ontario Land Surveyors Job No: 22750-22 JBPA Developments Lts2,3,4,5, P116 RP220 T F 10

Notes & Legend

- Denotes: Survey Monument Planted, Survey Monument Found, Short Standard Iron Bar, Iron Bar, Concrete Pin, Cut Cross, Witness, Measured, Annis, O'Sullivan, Vollebek Ltd., Registered Plan 220, Registered Plan 90280, (1692) Plan dated August 2, 2016, (725) Plan dated June 10, 1986, (857) Plan dated May 27, 2019, (AOV) Plan dated April 12, 2017, Maintenance Hole (Storm Sewer), Maintenance Hole (Sanitary), Underground Storm Sewer, Underground Sanitary Sewer, Underground Gas, Overhead Wires, Utility Pole, Catch Basin, Water Stand Post, Top of Grate, Gas Meter, Chain Link Fence, Board Fence, Metal Fence, Concrete Sidewalk, Stone Retaining Wall, Diameter, Location of Elevations, Top of Concrete Curb Elevation and Retaining Wall Elevation, Centreline, Property Line, Deciduous Tree



MAIN STREET (ROAD ALLOWANCE BETWEEN CONCESSIONS C AND D (RIDEAU FRONT) (NEPEAN))

SEVENTH STREET (CLOSED BY BY - LAW 4491, INST. CRI41290)

REGISTERED LOT 14 PIN 04126-0011, LOT 2 PIN 04126-0012, LOT 3 PIN 04126-0013, LOT 4 PIN 04126-0013, LOT 5 PIN 04126-0160, LOT 6 PIN 04126-0015, LOT 13 PIN 04126-0037, LOT 12 PIN 04126-0036, LOT 11 PIN 04126-0035, LOT 10 PIN 04126-0034, LOT 9 PIN 04126-0033, LOT 8 PIN 04126-0032, LOT 7 PIN 04126-0031, LOT 6 PIN 04126-0030, LOT 5 PIN 04126-0029, LOT 4 PIN 04126-0028, LOT 3 PIN 04126-0027, LOT 2 PIN 04126-0026, LOT 1 PIN 04126-0025