

PRELIMINARY
NOT FOR CONSTRUCTION

Copyright Reserved
The Copyrights to all designs and drawings are the property of Fotenn Consultants Inc. Unauthorized reproduction or use is forbidden. DO NOT SCALE DRAWING
Copyright réservés
Les droits d'auteur à tous les modèles et dessins sont la propriété de Fotenn Consultants Inc. Reproduction ou utilisation non autorisée est interdite. NE PAS L'ÉCHELLE DE DESSIN
Client / Client

GROUPE ORADEV INC.

- Legend / légende
- SCOPE OF APPLICATION
 - MEDIUM DECIDUOUS TREE (REFER TO PLANTING SCHEDULE FOR SPECIES AND QUANTITIES)
 - LARGE DECIDUOUS TREE (REFER TO PLANTING SCHEDULE FOR SPECIES AND QUANTITIES)
 - PROPOSED SHRUB / PERENNIAL MASSING PLANTING
 - PROPOSED CONCRETE PAVING - REFER TO DETAIL 1-L2
 - PROPOSED SOD
 - PROPOSED BIKE RACK - REFER TO DETAIL 1-L2

NOTES:

DO NOT SCALE DRAWINGS;

NOTES ARE APPLICABLE TO ALL DRAWINGS IN THE SET;

Fotenn Consultants Inc. IS NOT RESPONSIBLE FOR ACCURACY OF BASE INFORMATION;

REFER TO CIVIL ENGINEERING DRAWINGS FOR GRADING & SITE SERVICING INFORMATION;

THE CONTRACTOR IS RESPONSIBLE FOR CONFIRMING SITE CONDITIONS AND REPORTING ANY DISCREPANCIES TO THE LANDSCAPE ARCHITECT;

THE CONTRACTOR IS RESPONSIBLE FOR CONFIRMING EXACT LOCATIONS OF ALL UNDERGROUND SERVICES AND OBTAINING CLEARANCE FROM ALL APPLICABLE UTILITIES. PROPOSED WORKS FOUND TO BE IN CONFLICT WITH UNDERGROUND SERVICES MAY BE ADJUSTED AT THE DIRECTION OF THE LANDSCAPE ARCHITECT;

LANDSCAPE ELEMENTS SHOWN ARE SUBJECT TO THE FINAL LOCATION OF UNDERGROUND SERVICES AND UTILITIES;

DO NOT INSTALL TREES ON PROPERTY / LOT LINES OR WITHIN DRAINAGE EASEMENTS;

PERFORM WORK IN ACCORDANCE WITH DETAILS AND SPECIFICATIONS;

ALL PLANT MATERIAL SHALL BE No. 1 NURSERY STOCK AND SHALL MEET OR EXCEED THE SPECIFICATION OF THE Canadian Standards for Nursery Stock, AS PUBLISHED BY THE Canadian Nursery Landscape Association;

SPECIES SUBSTITUTIONS ARE NOT PERMITTED WITHOUT PRIOR WRITTEN APPROVAL OF THE LANDSCAPE ARCHITECT;

ALL UN-PAVED SURFACES TO RECEIVE 150mm DEPTH TOPSOIL & SOD.

STANDARDS FOR TREE PLANTING:

NO PLANTING ON CORNERS OR ANYWHERE WHERE IT WOULD CREATE A SIGHT LINE CONCERN;

MAINTAIN A MINIMUM DISTANCE OF 2.5m FROM THE CURB FOR DECIDUOUS TREES AND 4.5m FOR CONIFEROUS TREES;

MAINTAIN A MINIMUM DISTANCE OF 1.5m FOR DECIDUOUS (4.5m FOR CONIFERS) FROM ANY SIDEWALK OR PRIVATE WALKWAY;

MAINTAIN A MINIMUM DISTANCE OF 1.2m FROM ALL DRIVEWAYS;

MAINTAIN A MINIMUM DISTANCE OF 2.5m FROM COMMUNITY MAILBOXES, LIGHT STANDARDS, FIRE HYDRANTS AND NO PLANTING IN FRONT OF HYDRANTS;

MAINTAIN A MINIMUM DISTANCE OF 3.0m FROM ALL HYDRO TRANSFORMERS;

MAINTAIN A MINIMUM DISTANCE OF 1.0m FROM ALL UNDERGROUND SERVICES;

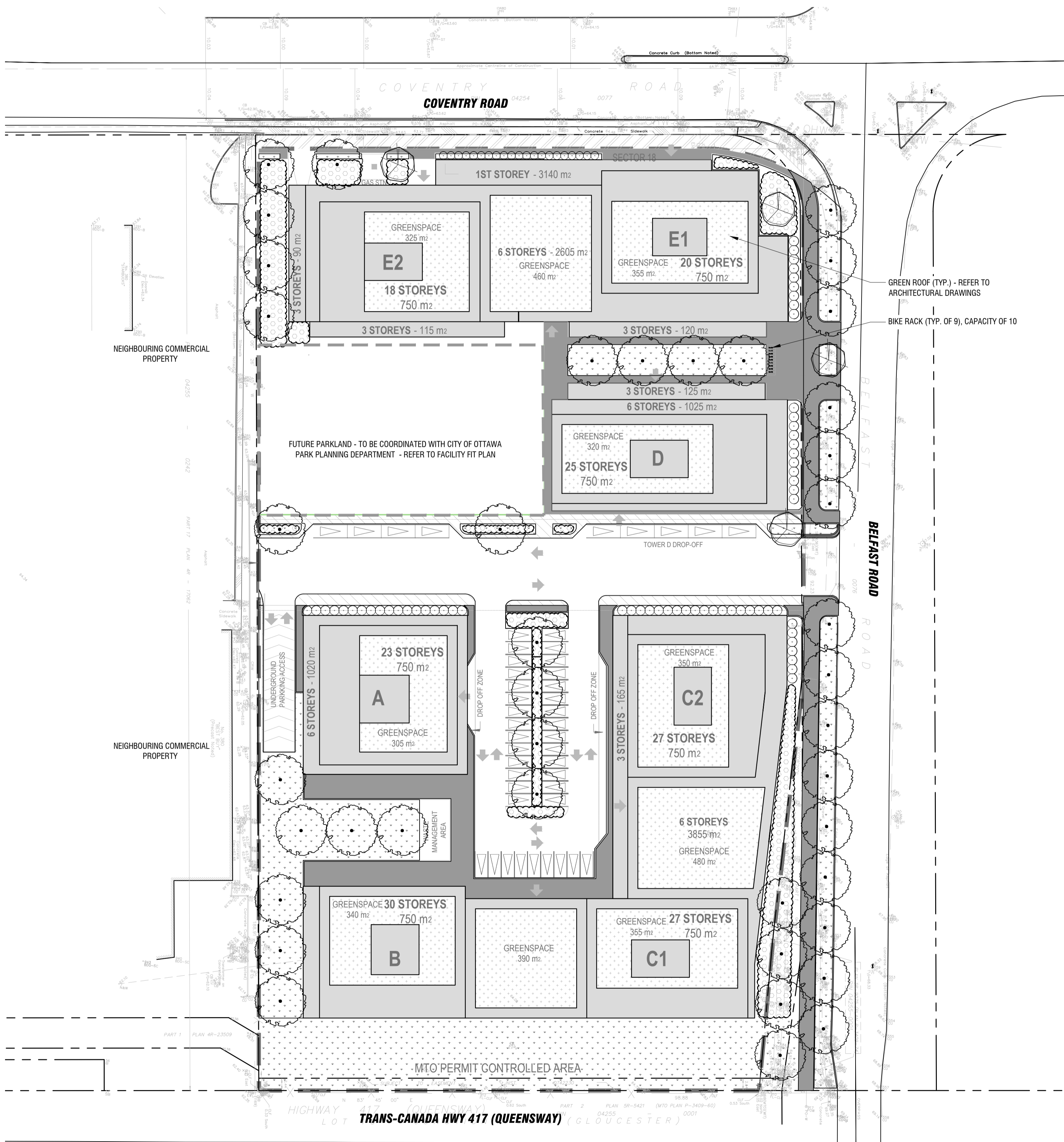
MAINTAIN A MINIMUM DISTANCE OF 1.0m FROM ALL BELL AND CABLE BOXES;

MAINTAIN A MINIMUM DISTANCE OF 10.0 FROM BUS SHELTERS

IMPORTANT NOTICE FOR CONTRACTOR:

THE CITY OF OTTAWA REQUIRES A Certificate of Completion (F1) Landscape Works TO BE SUBMITTED AND SEALED BY THE LANDSCAPE ARCHITECT. CONTRACTORS ARE RESPONSIBLE FOR FAMILIARIZING THEMSELVES WITH THE REQUIREMENTS OF THIS PROCESS AND PROVIDING SUFFICIENT NOTICE TO THE LANDSCAPE ARCHITECT TO CONDUCT SITE REVIEWS DURING INSTALLATION OF TREES. THE 1 YEAR WARRANTY PERIOD SHALL NOT COMMENCE UNTIL THE LANDSCAPE ARCHITECT HAS SUBMITTED THE F1 Certificate.

PRIOR TO INSTALLATION OF TREES, THE DEVELOPER WILL CONTACT THE PLANNING AND GROWTH MANAGEMENT AND FORESTRY SERVICES TO REVIEW THE SPECIES AND LOCATION OF TREES.



1 LANDSCAPE PLAN
L1 1:500

rev'n	description / la description	yyyy/mm/dd
00	issued for OPA and ZBLA submission	2022/10/20

FOTENN Planning + Design
396 Cooper Street, Suite 300
Ottawa, ON, CANADA K2P 2H7
613.730.5709
fotenn.com

north / le nord stamp / le cachet

project / projet

400 COVENTRY ROAD

drawing / dessin

LANDSCAPE PLAN

designed / conçu OM	drawn / dessiné OM	reviewed / examiné DF
date OCT 2022		project number / No. du projet
drawing number / No. du dessin L1 of 2		

PLOT INFORMATION: DWG NAME: P:\PROJECTS\Groupes\Drawings\400 Coventry Road\400 Coventry Road Landscape\DESIGN\DEVELOPMENT\00 DRAWINGS\Sheet-01-00 Coventry Rd - L1.dwg PLOT DATE: 2022-10-20 11:15 AM SHEET SIZE: ISO full sheet A1 (841.0x610.0 MM) PLOTTED BY: Owen Moynihan LAST SAVED BY: ingman

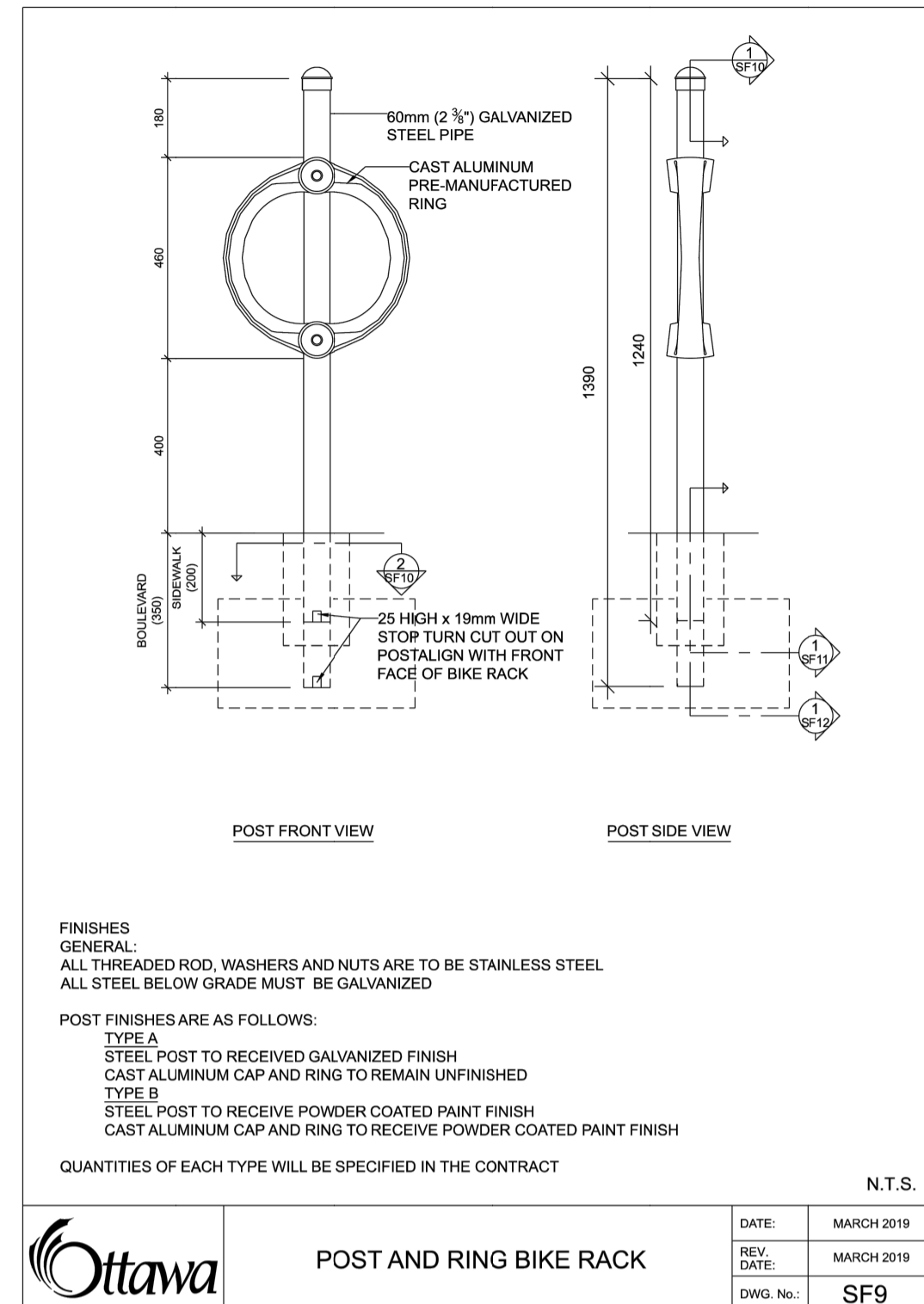
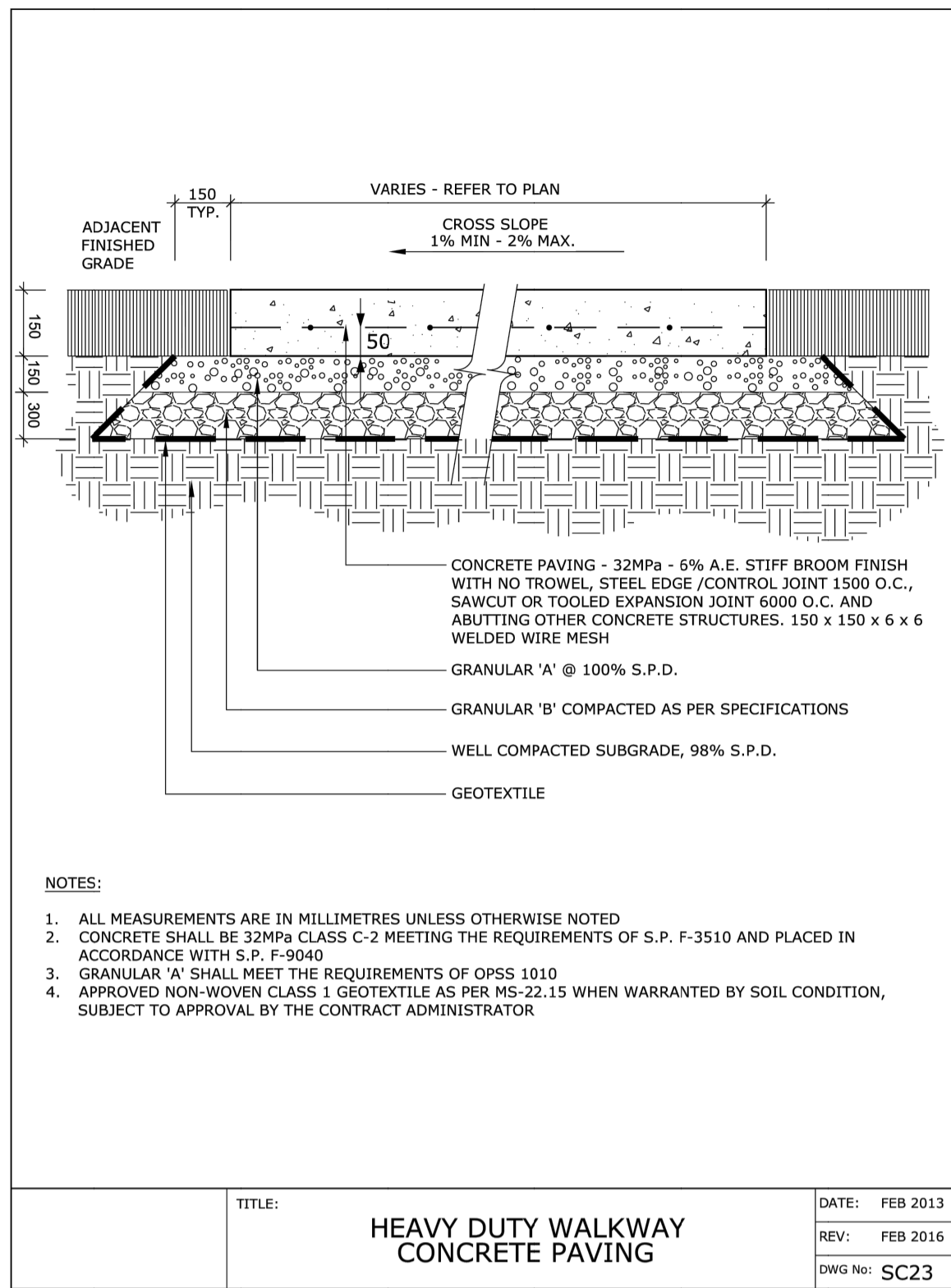
PRELIMINARY
NOT FOR CONSTRUCTION

Copyright Reserved
The Copyrights to all designs and drawings are the property of Fotenn Consultants Inc. Unauthorized reproduction or use is forbidden. DO NOT SCALE DRAWING
Copyright réservés
Les droits d'auteur à tous les modèles et dessins sont la propriété de Fotenn Consultants Inc. Reproduction ou utilisation non autorisée est interdite. NE PAS L'ÉCHELLE DE DESSIN

Client / Client

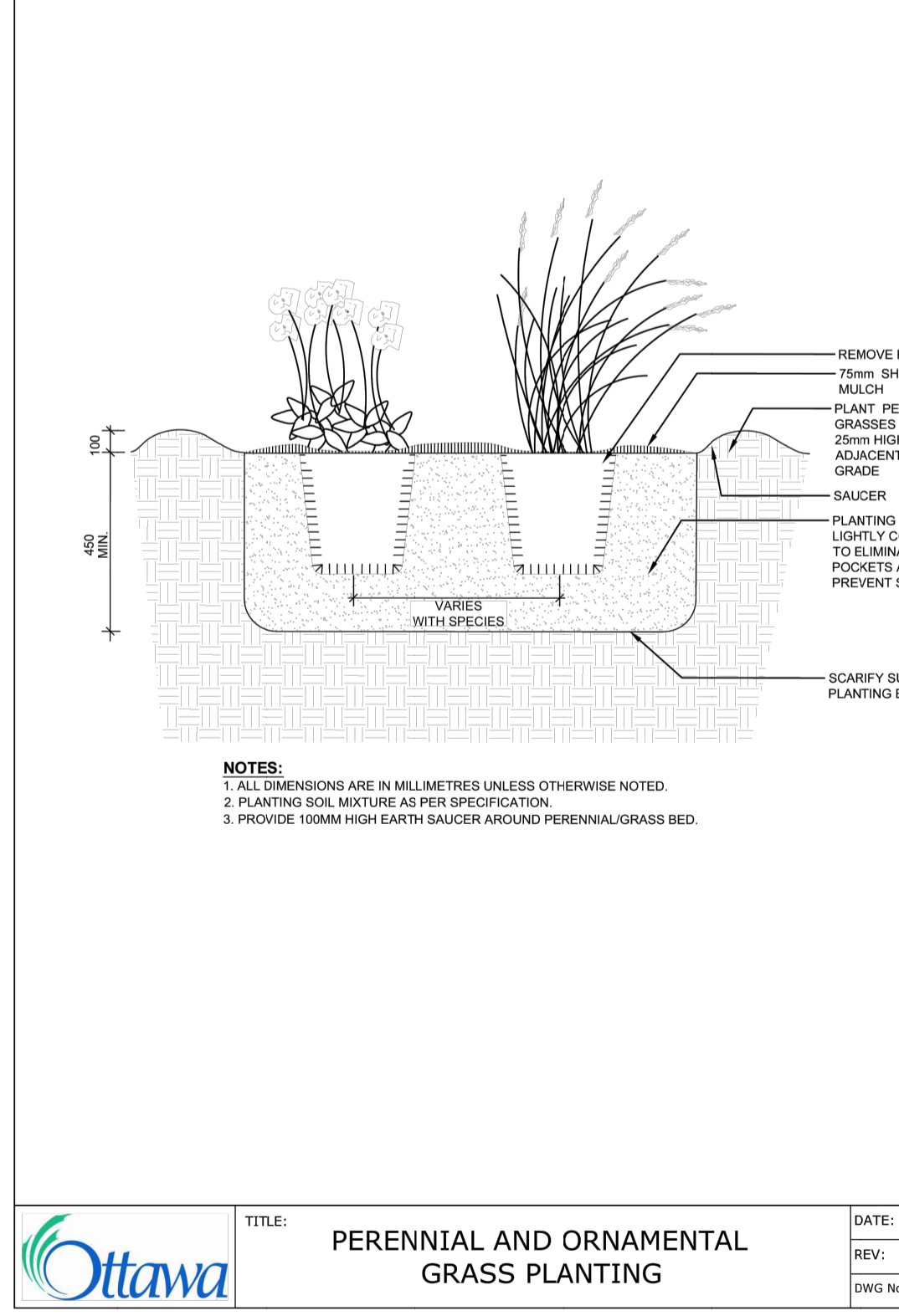
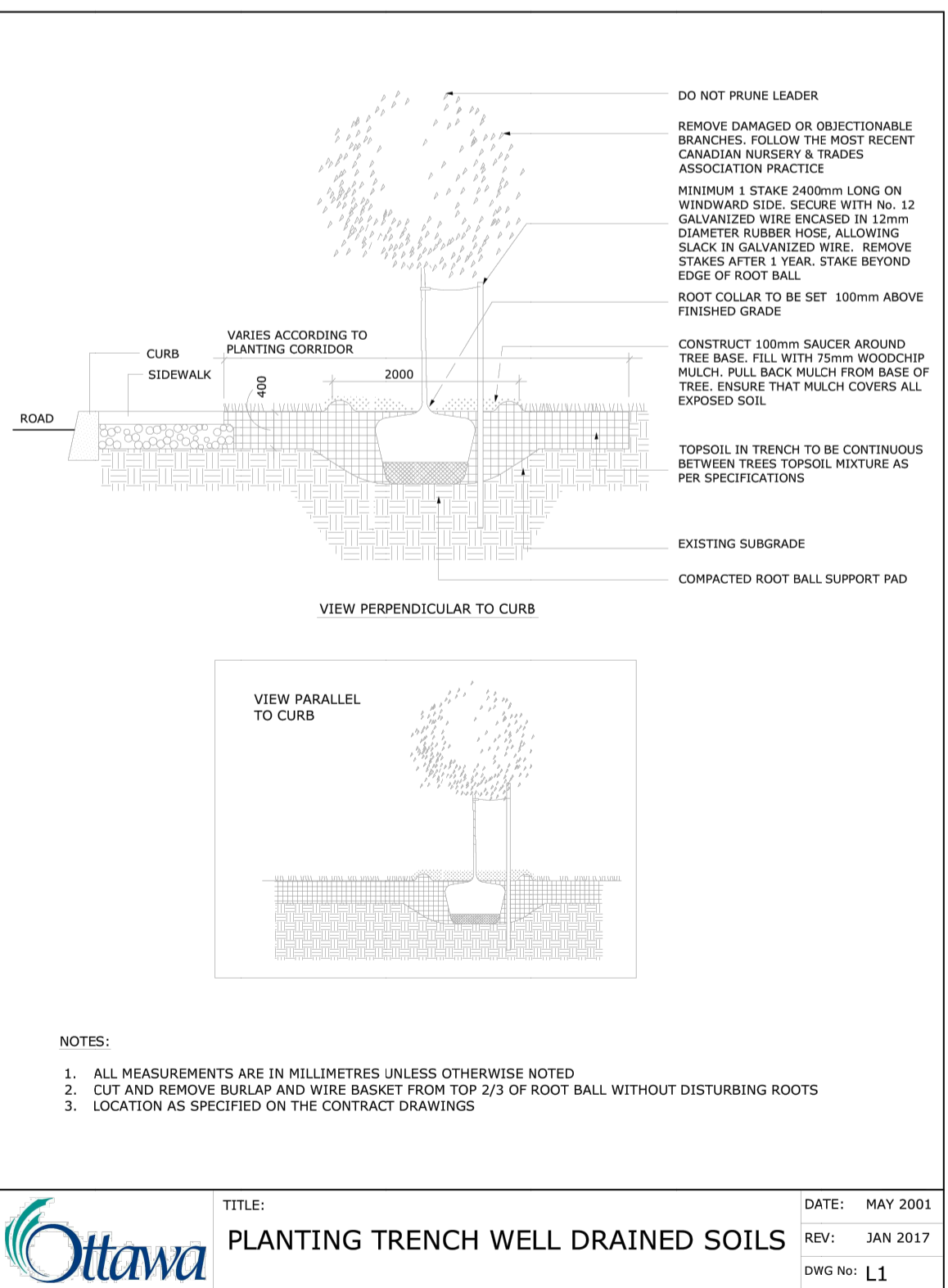
GROUPE ORADEV INC.

legend / légende



1 CONCRETE PAVING DETAIL
L2 NTS

2 BIKE RACK DETAIL
L2 NTS



3 DECIDUOUS TREE / PLANTING BED DETAIL
L2 NTS

4 HERBACEOUS PLANTING DETAIL
L2 NTS

rev'n	description / la description	yyyy/mm/dd
00	issued for OPA and ZBLA submission	2022/10/20

FOTENN Planning + Design
396 Cooper Street, Suite 300
Ottawa, ON, CANADA K2P 2H7
613.730.5709
fotenn.com

north / le nord stamp / le cachet
ASSOCIATION OF LANDSCAPE ARCHITECTS OF ONTARIO
MEMBER

project / projet
400 COVENTRY ROAD

drawing / dessin
LANDSCAPE PLAN

designed / conçu	drawn / dessiné	reviewed / examiné
OM	OM	DF
date	project number / No. du projet	
OCT 2022		

PLOT INFORMATION: DWG NAME: P:\PROJECTS\Shopee Drive - inc\400 Coventry Road\landscape\DESIGN\DEVELOPMENT\00 DRAWINGS\Sheet-01 - 400 Coventry Rd - L2.dwg PLOT DATE: 2022-12-20 11:59 AM SHEET SIZE: ISO full sheet A1 (841.0x 641.0 MM) PLOTTED BY: Owen Moynihan L251 SAVED BY: mngman