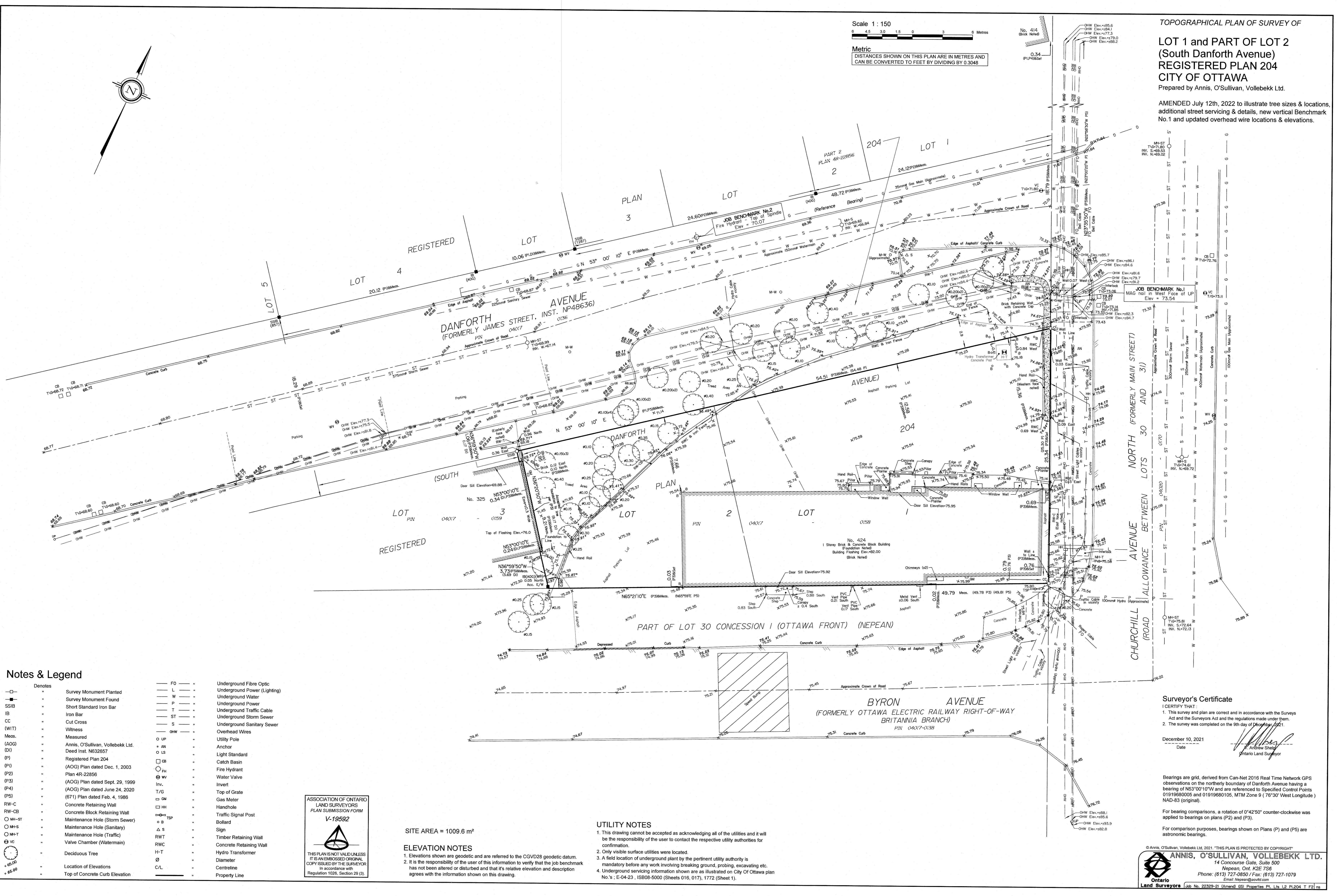
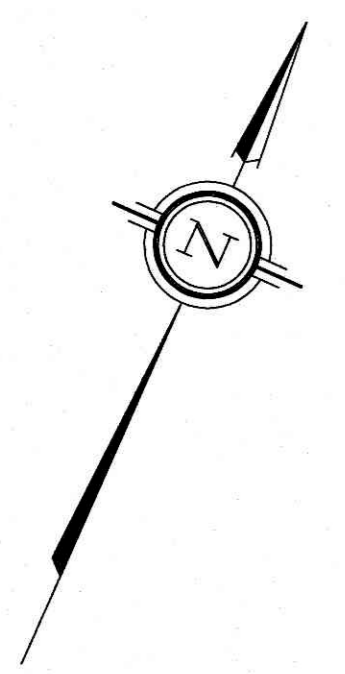


LOT 1 and PART OF LOT 2 (South Danforth Avenue) REGISTERED PLAN 204 CITY OF OTTAWA

Prepared by Annis, O'Sullivan, Vollebek Ltd.

AMENDED July 12th, 2022 to illustrate tree sizes & locations, additional street servicing & details, new vertical Benchmark No. 1 and updated overhead wire locations & elevations.

Scale 1:150 Metric DISTANCES SHOWN ON THIS PLAN ARE IN METRES AND CAN BE CONVERTED TO FEET BY DIVIDING BY 0.3048



- Notes & Legend
Denotes
Survey Monument Planted
Survey Monument Found
Short Standard Iron Bar
Iron Bar
Cut Cross
Witness
Measured
Annis, O'Sullivan, Vollebek Ltd.
Registered Plan 204
(AOG) Plan dated Dec. 1, 2003
Plan 4R-22856
(AOG) Plan dated Sept. 29, 1999
(AOG) Plan dated June 24, 2020
(671) Plan dated Feb. 4, 1986
Concrete Retaining Wall
Concrete Block Retaining Wall
Maintenance Hole (Storm Sewer)
Maintenance Hole (Sanitary)
Maintenance Hole (Traffic)
Valve Chamber (Watermain)
Deciduous Tree
Location of Elevations
Top of Concrete Curb Elevation

- FG - Underground Fibre Optic
L - Underground Power (Lighting)
W - Underground Water
P - Underground Power
T - Underground Traffic Cable
ST - Underground Storm Sewer
S - Underground Sanitary Sewer
OHW - Overhead Wires
UP - Utility Pole
AN - Anchor
LS - Light Standard
CB - Catch Basin
FH - Fire Hydrant
WV - Water Valve
Inv. - Invert
T/G - Top of Grate
GM - Gas Meter
HH - Handhole
TSP - Traffic Signal Post
B - Bollard
S - Sign
RWT - Timber Retaining Wall
RWC - Concrete Retaining Wall
H-T - Hydro Transformer
D - Diameter
C/L - Centreline
Property Line



SITE AREA = 1009.6 m²

ELEVATION NOTES
1. Elevations shown are geodetic and are referred to the CGVD28 geodetic datum.
2. It is the responsibility of the user of this information to verify that the job benchmark has not been altered or disturbed and that its relative elevation and description agrees with the information shown on this drawing.

UTILITY NOTES
1. This drawing cannot be accepted as acknowledging all of the utilities and it will be the responsibility of the user to contact the respective utility authorities for confirmation.
2. Only visible surface utilities were located.
3. A field location of underground plant by the pertinent utility authority is mandatory before any work involving breaking ground, probing, excavating etc.
4. Underground servicing information shown are as illustrated on City of Ottawa plan No.'s: E-04-23, ISB08-5000 (Sheets 016, 017), 1772 (Sheet 1).

Surveyor's Certificate
I CERTIFY THAT:
1. This survey and plan are correct and in accordance with the Surveys Act and the Surveyors Act and the regulations made under them.
2. The survey was completed on the 9th day of December, 2021.
December 10, 2021
Date
Andrew Sheld
Ontario Land Surveyor

Bearings are grid, derived from Can-Net 2016 Real Time Network GPS observations on the northerly boundary of Danforth Avenue having a bearing of N53°00'10"W and are referenced to Specified Control Points 0191968005 and 01919680105, MTM Zone 9 (76°30' West Longitude) NAD-83 (original).
For bearing comparisons, a rotation of 0°42'50" counter-clockwise was applied to bearings on plans (P2) and (P3).
For comparison purposes, bearings shown on Plans (P) and (P5) are astronomic bearings.
© Annis, O'Sullivan, Vollebek Ltd. 2021. THIS PLAN IS PROTECTED BY COPYRIGHT.
ANNIS, O'SULLIVAN, VOLLEBEK LTD.
14 Concourse Gate, Suite 500
Nepean, Ont. K2E 7S6
Phone: (613) 727-0850 / Fax: (613) 727-1079
Email: nepean@anniso.com
Ontario Land Surveyors (Job No. 22329-21 (Amend) GSI Properties Pl. Lts. L2 Pl.204 T. F2) ns