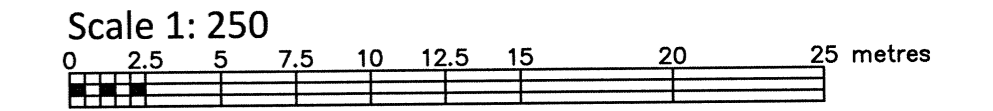


BLOCKS A & D
REGISTERED PLAN 302828
AND PART OF LOT 32
CONCESSION A (OTTAWA FRONT)
GEOGRAPHIC TOWNSHIP OF NEPEAN
CITY OF OTTAWA
FARLEY, SMITH & DENIS SURVEYING LTD. 2022



Metric Note
Distances on this plan are in metres and can be converted to feet by dividing by 0.3048.

Bearing Note
Bearings are grid, derived from the northerly limit of Lanark Avenue having a bearing of N 67° 51' 50" E and are referred to the Central Meridian of MTM Zone 9 (76° 30' West Longitude) Nad-83 (Original).

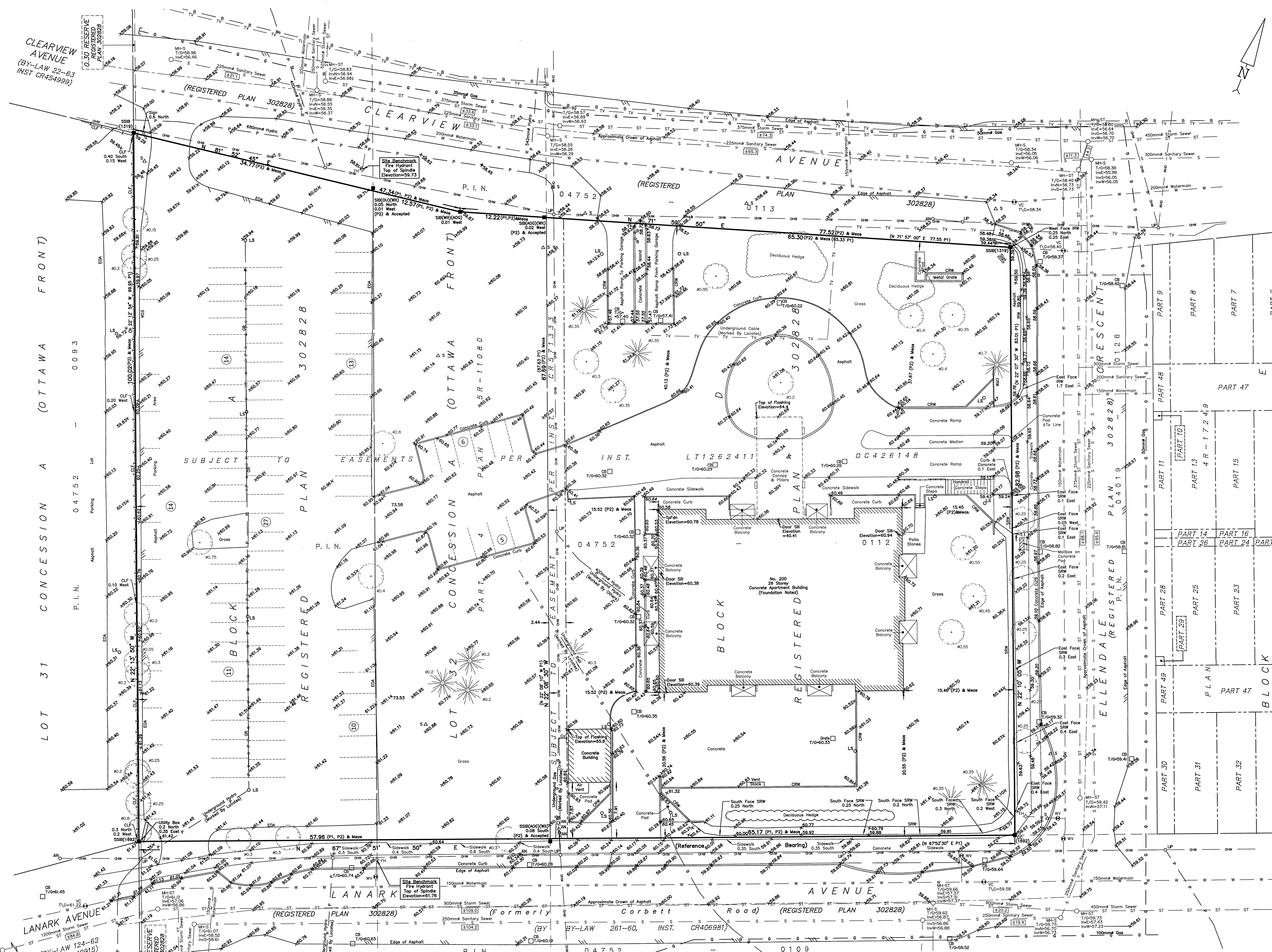
For bearing comparisons, a rotation of 0°32'40" counter-clockwise was applied to bearings on P1.

Elevation Notes
1. Elevations shown are geodetic and are referred to Geodetic Datum CGVD-1928 :1978. (Monument No. 197534238)
2. It is the responsibility of the user of this information to verify that the job benchmark has not been altered or disturbed and that its relative elevation and description agrees with the information shown on this drawing.

Utility Notes
1. This drawing cannot be accepted as acknowledging all of the utilities and it will be the responsibility of the user to contact the respective utility authorities for confirmation.
2. Only visible surface utilities were located.
3. Underground utility data derived from City of Ottawa utility sheet reference: 972p&p1, 972p&p2, 2523p&p7, 2523p&p8, 3117p&p02, 5880p&p3, 14110p&p12, 14110p&p13, D-05-15, D-05-16 & D23c-3.
4. Sanitary and storm sewer grades and inverts were derived from: Field measurement.
5. A field location of underground plant by the pertinent utility authority is mandatory before any work involving breaking ground, probing, excavating etc.

Notes & Legend

Notes	Denotes
Survey Monument Planted	Symbol
Survey Monument Found	Symbol
Standard Iron Bar	Symbol
Short Standard Iron Bar	Symbol
Iron Bar	Symbol
Cut Cross	Symbol
Witness	Symbol
Measured	Symbol
Registered Plan 302828	Symbol
Plan by (1692) dated January 15, 2020 (File No. 667-19)	Symbol
Maintenance Hole (Storm)	Symbol
Maintenance Hole (Sanitary)	Symbol
Valve Chamber (Watermain)	Symbol
Underground Storm Sewer	Symbol
Underground Sanitary Sewer	Symbol
Underground Water	Symbol
Underground Power	Symbol
Underground Gas	Symbol
Underground Bell	Symbol
Underground Cable	Symbol
Overhead Wires	Symbol
Utility Pole	Symbol
Anchor	Symbol
Light Standard	Symbol
Catch Basin	Symbol
Fire Hydrant	Symbol
Water Valve	Symbol
Bollard	Symbol
Diameter	Symbol
Cedar Hedge	Symbol
Chain Link Fence	Symbol
Rail Fence	Symbol
Board Fence	Symbol
Guard Rail	Symbol
Plastic / Vinyl Fence	Symbol
Concrete Retaining Wall	Symbol
Stone Retaining Wall	Symbol
Interlock Retaining Wall	Symbol
Wood Retaining Wall	Symbol
Invert	Symbol
Top of Grate	Symbol
Underside of Eave	Symbol
Top of Foundation	Symbol
Centreline	Symbol
Location of Elevations	Symbol
Top of Concrete Curb/Retaining Wall Elevation	Symbol
Property Line	Symbol
Deciduous Tree - The Symbol shown denotes location and trunk diameter only. Size of its root system/overhead canopy may be smaller/larger than the symbol size depicted on this plan.	Symbol
Coniferous Tree - The Symbol shown denotes location and trunk diameter only. Size of its root system/overhead canopy may be smaller/larger than the symbol size depicted on this plan.	Symbol



Surveyor's Certificate
I certify that:
1. This survey and plan are correct and in accordance with the Survey Act, the Surveyors Act and the Regulations made under them.
2. The survey was completed on the 8th day of February, 2022.
Date: Feb 8/22
Signature: Jamie Leslie
Ontario Land Surveyor

FARLEY, SMITH & DENIS SURVEYING LTD.
ONTARIO LAND SURVEYORS
CANADA LAND SURVEYORS
Unit 275, 30 COLONNADE ROAD, OTTAWA, ONTARIO K2E 7J6
TEL: (613) 727-8226 E-mail: fsdsurvey@bellnet.ca

TOPOGRAPHIC DATA WAS COLLECTED UNDER WINTER CONDITIONS. SNOW COVER AND ICE PRECLUDE DETERMINING LOCATION AND ELEVATION OF SOME TOPOGRAPHICAL DATA THAT IS OTHERWISE VISIBLE.
WARNING: NO PERSON MAY COPY, REPRODUCE, DISTRIBUTE OR ALTER THIS PLAN IN WHOLE OR IN PART WITHOUT THE WRITTEN PERMISSION OF FARLEY, SMITH & DENIS SURVEYING LTD.
© FARLEY, SMITH & DENIS SURVEYING LTD., 2022.