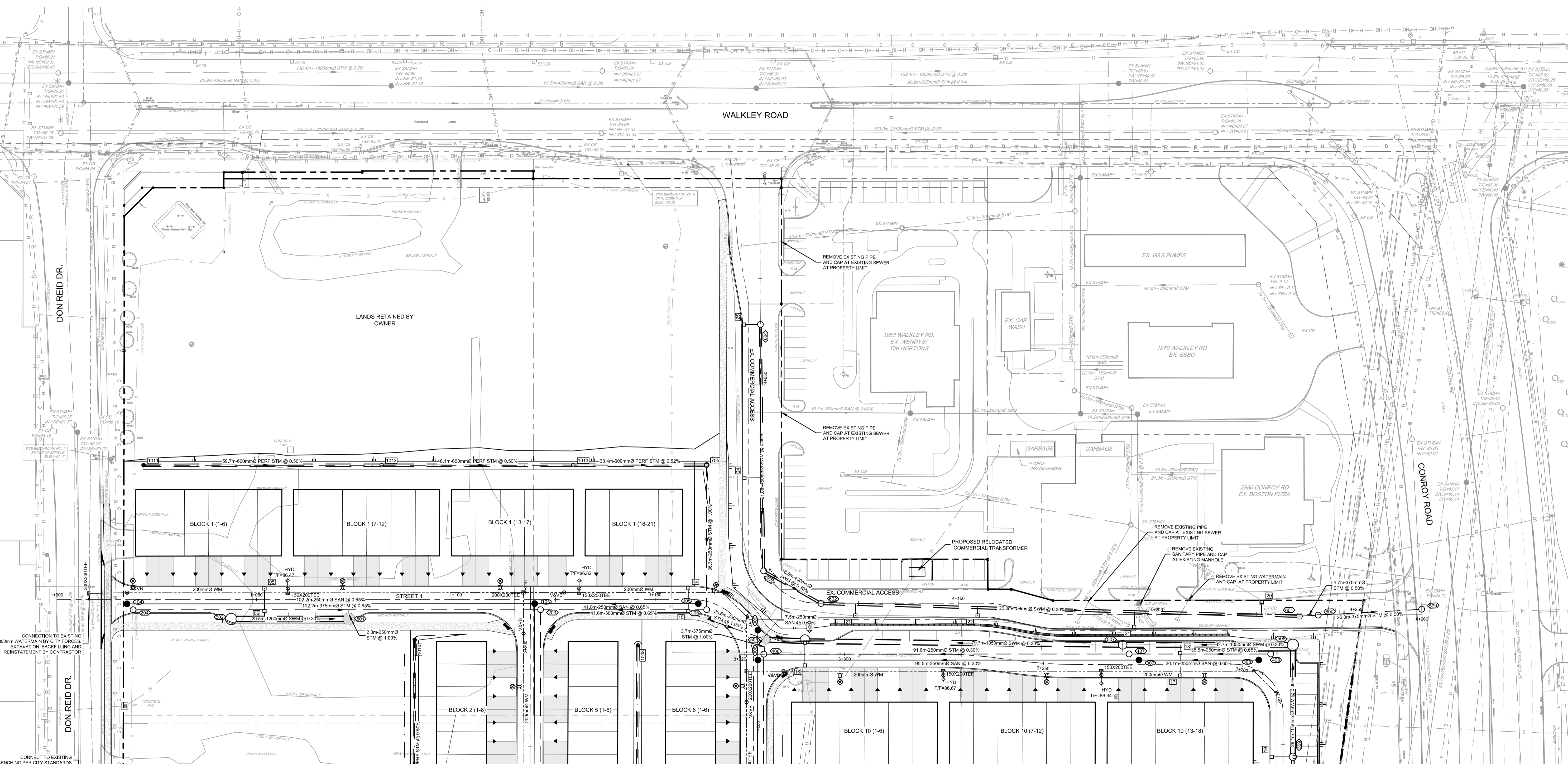
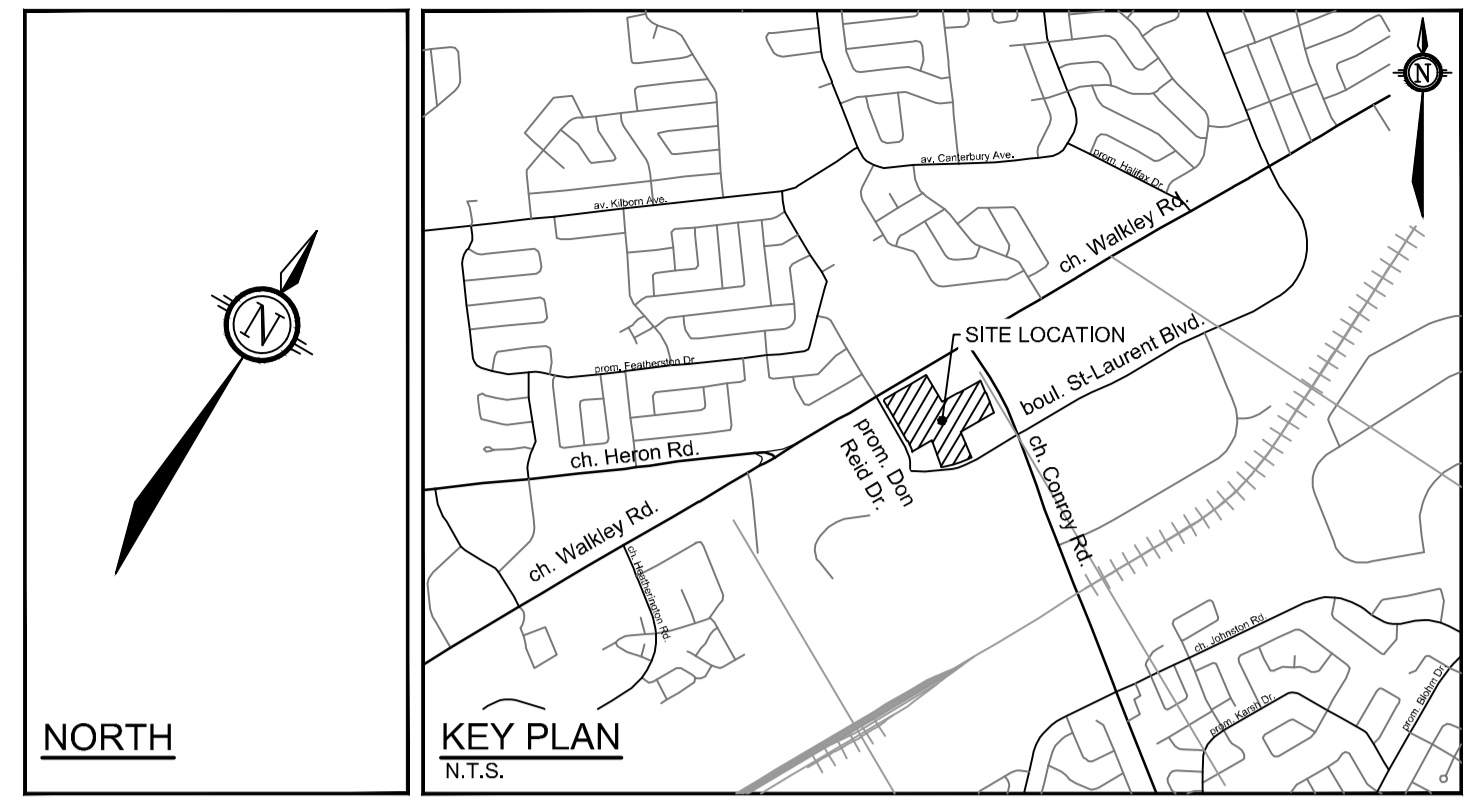




- LEGEND**
- SITE PROPERTY LINE
  - MISC LEGAL LINE (EASEMENT, PROPERTY LINES) REFER TO LEGAL PLAN FOR DETAILS
  - TACTILE WALKING SURFACE INDICATOR (TWSI) PER CITY DETAIL SC7.3
  - PROPOSED SIDEWALK
  - PROPOSED RETAINING WALL
  - C/W RAILING
  - PROPOSED CURB
  - PROPOSED DEPRESSED CURB
  - PROPOSED ASPHALT DRIVEWAY
  - SWALE c/w SUBDRAIN AND DIRECTION OF FLOW
  - PROPOSED SANITARY SERVICE c/w MANHOLE
  - PROPOSED STORM SEWER AND MANHOLE
  - PROPOSED STORM MANHOLE C/W ICD
  - PROPOSED STORMWATER MANAGEMENT PIPE
  - PROPOSED CATCHBASIN MANHOLE
  - PROPOSED CATCHBASIN MANHOLE C/W ICD
  - PROPOSED CATCHBASIN
  - PROPOSED CATCHBASIN C/W ICD
  - PROPOSED DOUBLE CATCHBASIN
  - PROPOSED DOUBLE CATCHBASIN C/W ICD

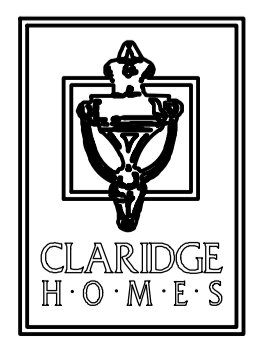
- PROPOSED LANDSCAPE DRAIN
- PROPOSED WATER MAIN
- PROPOSED HYDRANT c/w LEAD & VALVE
- PROPOSED BEND AND THRUST/BLOCK 11.25", 22.5", 45" or TEE (REFER TO PLAN AND PROFILES)
- PROPOSED VALVE AND VALVE BOX
- PROPOSED TOP OF BOTTOM FLANGE
- PROPOSED SERVICE LATERALS REFER TO DETAIL ON DWG. 122040-ND1
- EXISTING MONITORING WELL
- EXISTING TRANSFORMER
- EXISTING DITCH CENTRELINE
- EXISTING UTILITY POLE c/w GUY WIRES
- EXISTING WATERMAIN c/w VALVE & VALVE CHAMBER
- EXISTING HYDRANT c/w VALVE & LEAD
- EXISTING SANITARY MANHOLE & SEWER
- EXISTING STORM MANHOLE & SEWER
- EXISTING CATCHBASIN
- EXISTING LIGHT STANDARD

- X EXISTING FENCE
- EXISTING TRAFFIC SIGNAL
- EXISTING TRAFFIC WIRE
- GAS EXISTING GAS MAIN
- EXISTING BELL LINE
- EXISTING HYDRO
- EXISTING STREETLIGHT WIRE



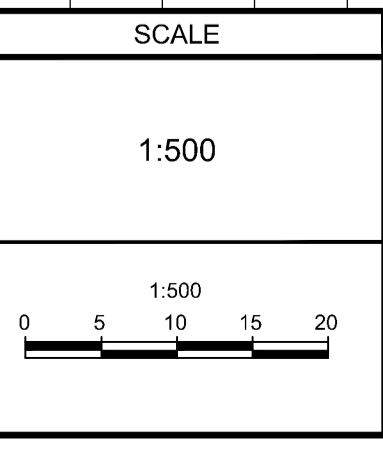
**NOTE:**  
THE POSITION OF ALL POLE LINES, CONDUITS, WATERMANS, SEWERS AND OTHER UNDERGROUND AND OVERGROUND UTILITIES AND STRUCTURES IS NOT NECESSARILY SHOWN ON THE CONTRACT DRAWINGS, AND WHERE SHOWN, THE ACCURACY OF THE POSITION OF SUCH UTILITIES AND STRUCTURES IS NOT GUARANTEED. BEFORE STARTING WORK, DETERMINE THE EXACT LOCATION OF ALL SUCH UTILITIES AND STRUCTURES AND ASSUME ALL LIABILITY FOR DAMAGE TO THEM.

**CLARIDGE HOMES**  
505 PRESTON STREET,  
2ND FLOOR  
OTTAWA, ONTARIO  
K1S 4N7.



**NOT FOR CONSTRUCTION**

No.	REVISION	DATE	BY
4	REVISED SITE PLAN	SEPT 29/23	ARM
3	ISSUED FOR UTILITY COORDINATION	SEPT 20/23	ARM
2	REVISED PER CITY COMMENTS	MAY 26/23	GJM
1	ISSUED IN SUPPORT OF DEVELOPMENT APPLICATIONS	NOV 01/22	GJM



**FOR REVIEW ONLY**

DESIGN: ARM  
CHECKED: GJM  
DRAWN: CJF/ARM  
CHECKED: ARM  
APPROVED: GJM

**PROFESSIONAL ENGINEER**  
A.R. MESTWAP  
100201604  
PROVINCE OF ONTARIO

**PROFESSIONAL ENGINEER**  
G.J. MacDONALD  
PROVINCE OF ONTARIO

**NOVATECH**  
Engineers, Planners & Landscape Architects  
Suite 200, 240 Michael Cowpland Drive  
Ottawa, Ontario, Canada K2M 1P6  
Telephone: (613) 254-9643  
Facsimile: (613) 254-5867  
Website: www.novatech-eng.com

LOCATION  
CITY OF OTTAWA  
2510 St. LAURENT BOULEVARD

DRAWING NAME  
**GENERAL PLAN OF SERVICES (NORTH)**

PROJECT No.	122040
REV	REV#4
DRAWING No.	122040-GP2