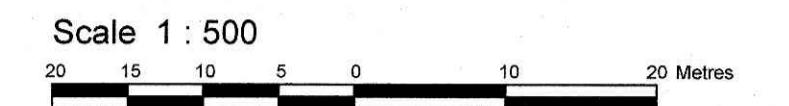
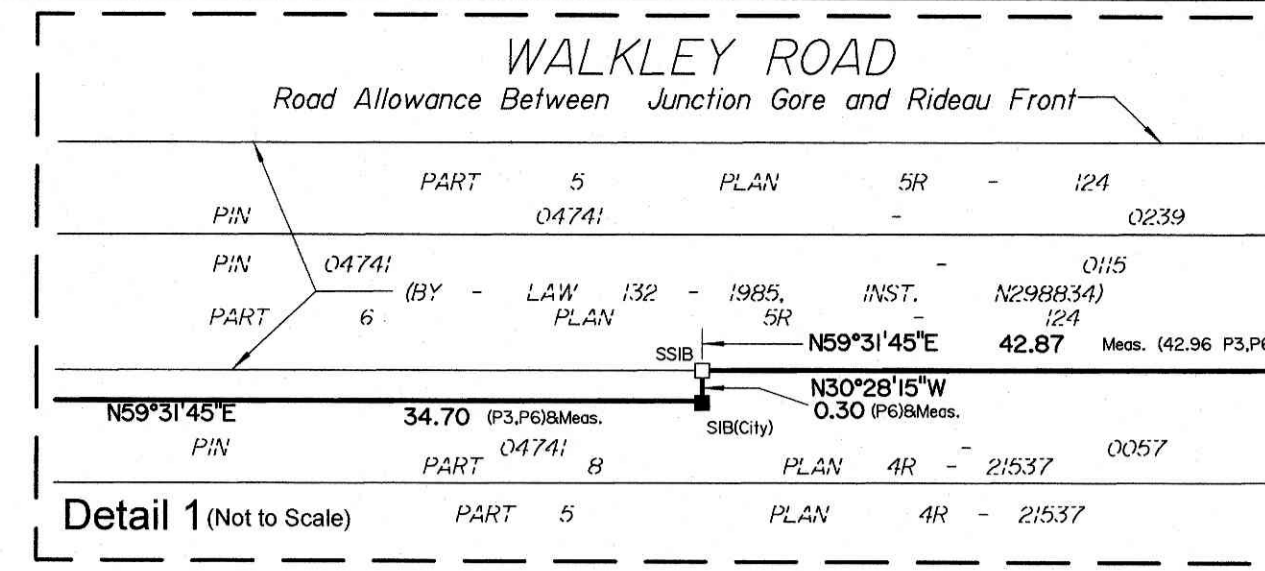


PART OF LOTS 4 and 1 CONCESSION 4 (RIDEAU FRONT) (Township of Gloucester) CITY OF OTTAWA

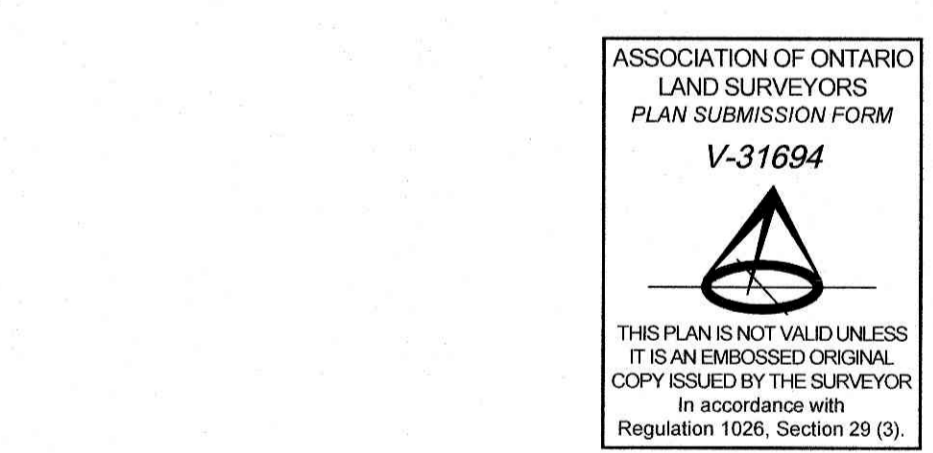
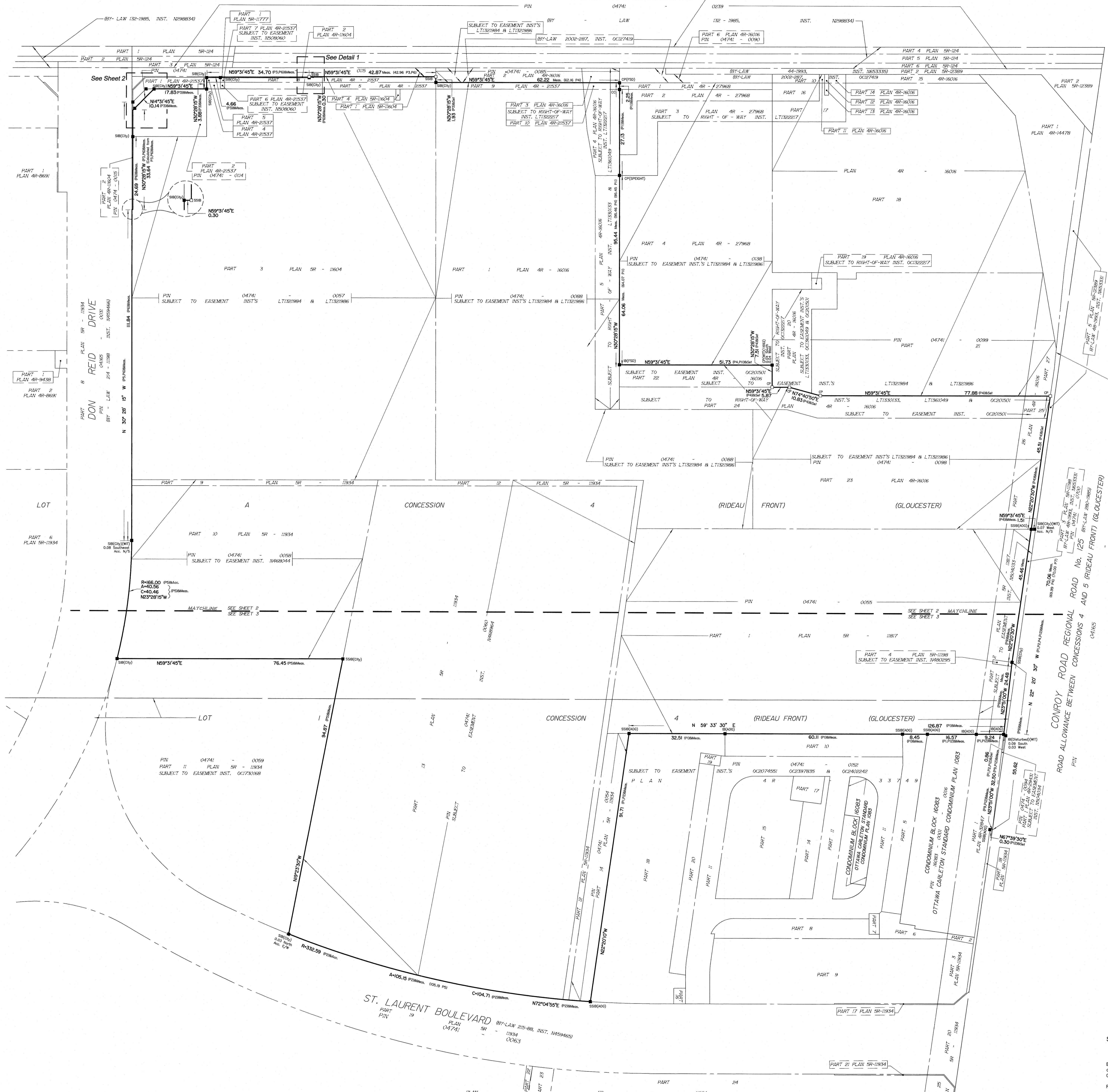
Prepared by Annis, O'Sullivan, Vollebek Ltd.



Metric DISTANCES SHOWN ON THIS PLAN ARE IN METRES AND CAN BE CONVERTED TO FEET BY DIVIDING BY 0.3048



WALKLEY ROAD REGIONAL ROAD No. 74



Surveyor's Certificate 1. This survey and plan are correct and in accordance with the Survey Act and the Surveyors Act and the regulations made under them. 2. The survey was completed on the 8th day of August, 2022. Date: 8/8/22 V. Andrew Sheehy Ontario Land Surveyor

Notes & Legend table with symbols and descriptions for survey monuments, bearings, and plan references.

SITE AREA = 59587.6 m² Bearings are grid, derived from Can-Net 2016 Real Time Network GPS observations and are referenced to Specified Control Points 01919680105 and 019196843761, MTM Zone 9 (76°30' West Longitude) NAD-83 (original). Refer to Sheet 2 and Sheet 3 for encroachments.