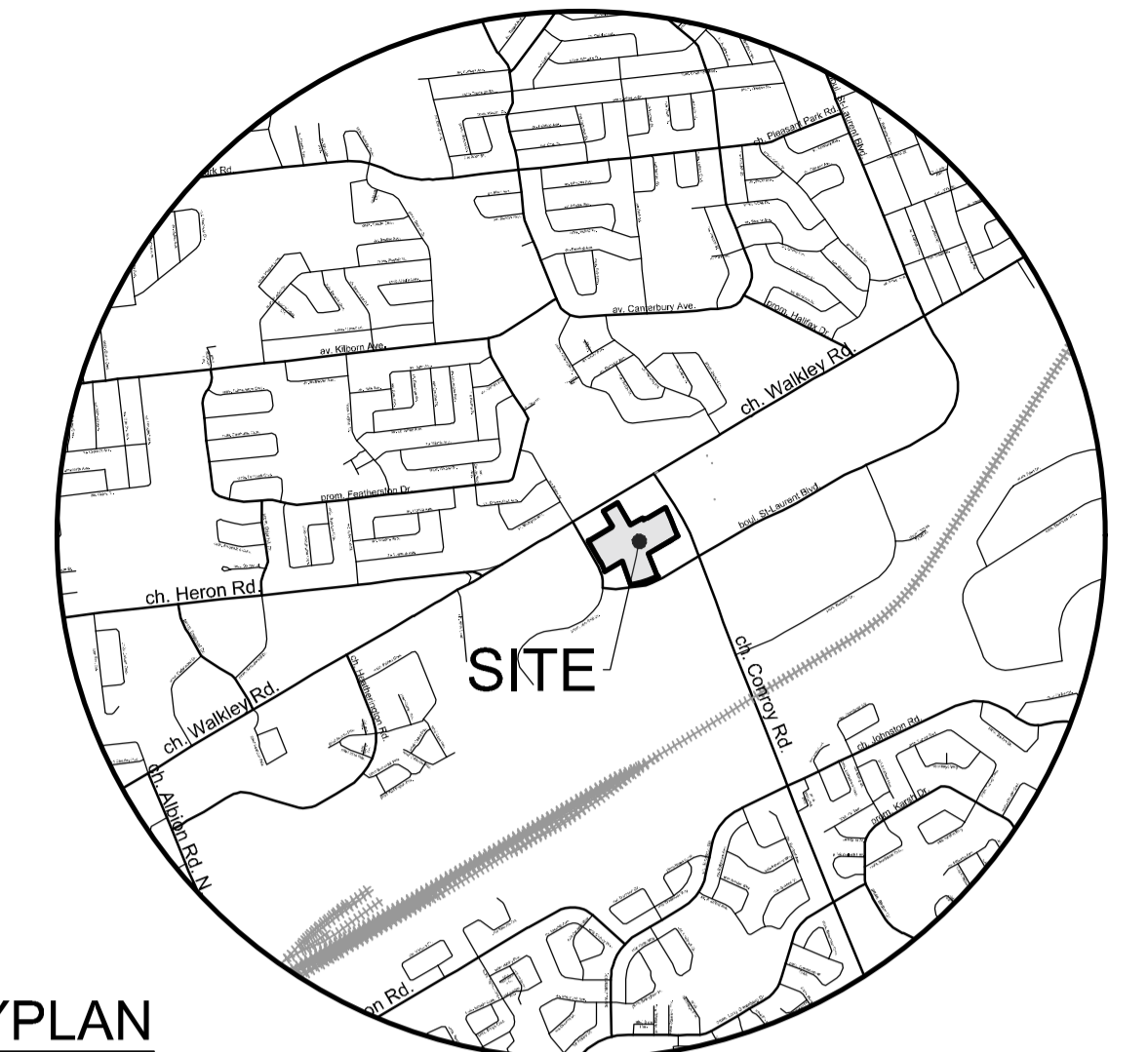
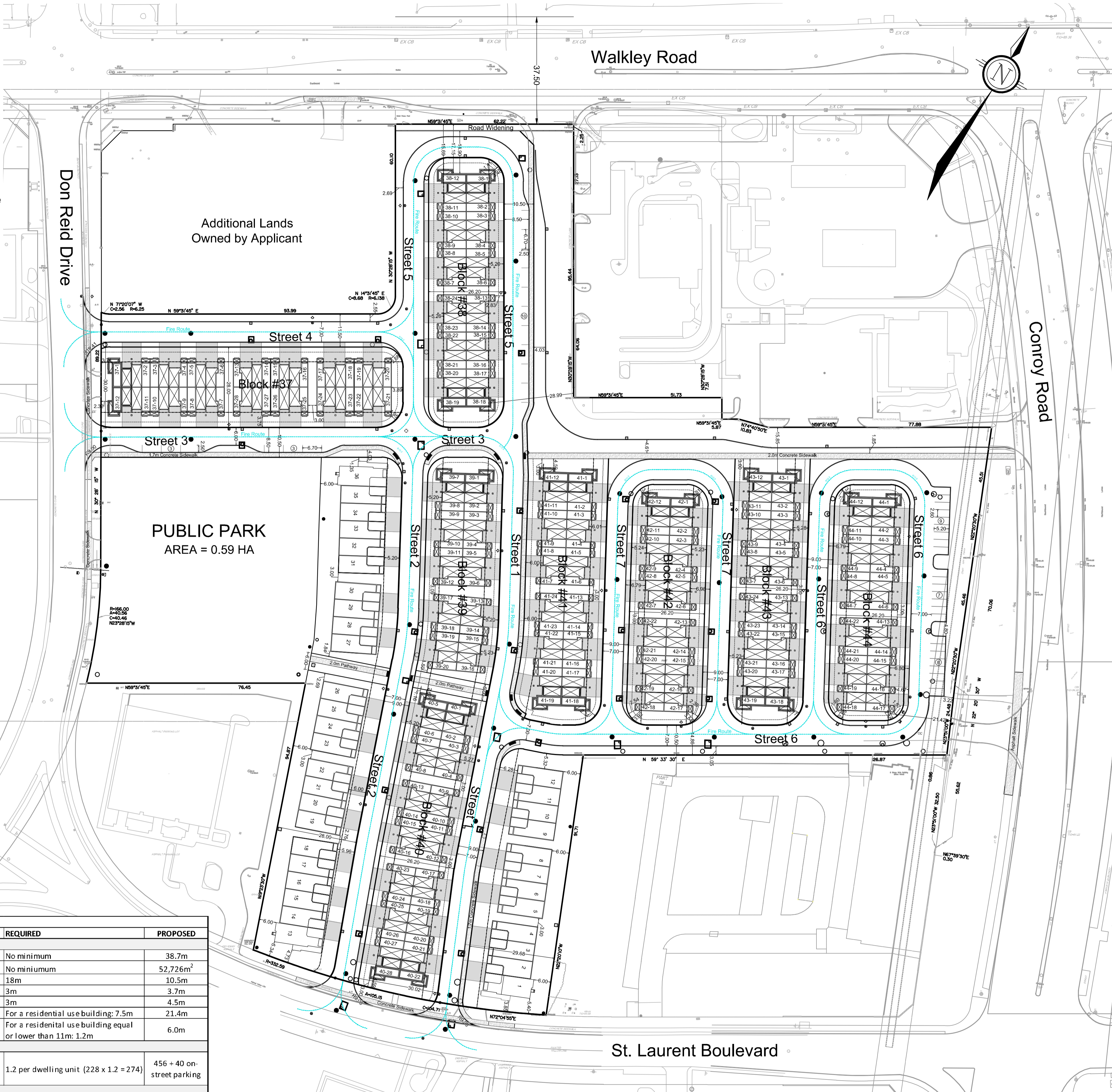


LEGEND

- Site Plan Boundary
- 5.2m Garage Setback
- 1.8m Building Setback
- Proposed Sanitary Manhole
- Proposed Storm Manhole
- ▣ Proposed Box Manhole
- ▣ Proposed Catchbasin Box Manhole
- Proposed Catchbasin Manhole
- Proposed Catchbasin
- ◇ Proposed Fire Hydrant
- Proposed Tactile Walking Surface Indicator (TWSI)
- Proposed Landscape Drain



KEYPLAN
NOT TO SCALE

SITE PLAN

2510 ST. LAURENT BOULEVARD

PART OF LOTS A AND I
CONCESSION 4 (RIDEAU FRONT)
Geographic Township of Gloucester
CITY OF OTTAWA



0 10 20 50 75 metres
SCALE 1:750

ZONING PROVISIONS - ZONING BY-LAW 2008-250		
PROVISION	REQUIRED	PROPOSED
GENERAL MIXED USE (GM) [XXXX]		
MIN LOT WIDTH	No minimum	38.7m
MIN LOT AREA	No minimum	52,726m ²
MAX BUILDING HEIGHT	18m	10.5m
MIN FRONT YARD SETBACK	3m	3.7m
MIN CORNER SIDE YARD SETBACK	3m	4.5m
MIN REAR YARD SETBACK	For a residential use building: 7.5m	21.4m
MIN INTERIOR SIDE YARD SETBACK	For a residential use building equal or lower than 11m: 1.2m	6.0m
PARKING RATES		
RESIDENT/VISITOR COMBINED (townhouse)		
Resident (1.0/dwelling unit)	1.2 per dwelling unit (228 x 1.2 = 274)	456 + 40 on-street parking
Visitor (0.2/dwelling unit)		
LANDSCAPED AREA AROUND PARKING LOTS		
MIN WIDTH OF LANDSCAPED BUFFER	Abutting a street - 11 to 99 spaces: 3m	3.2m
PLANNED UNIT DEVELOPMENT (PUD)		
MIN WIDTH OF PRIVATE WAY	6m	6.0m
MIN SETBACK FOR ANY WALL OF A RESIDENTIAL USE BUILDING TO A PRIVATE WAY	1.8m	2.4m
MIN SETBACK FOR ANY GARAGE OR CARPORT ENTRANCE TO A PRIVATE WAY	5.2m	5.2m
MIN SEPARATION BETWEEN BUILDINGS WITHIN A PUD WHERE THE HEIGHTS OF ABUTTING BUILDINGS IS LESS THAN OR EQUAL TO 14.5m	1.2m	2.7m

SOURCE REFERENCE:
 Legal Information: *Topographical Plan of Survey Annis, O'Sullivan, Vollebakk Ltd. / August, 2022 / MTM Zone 9 / NAD 83 ORIG*
 Topographic Information: *Topographical Plan of Survey Annis, O'Sullivan, Vollebakk Ltd. / August, 2022 / MTM Zone 9 / NAD 83 ORIG*
 Topographic Information: 1:1000
 City of Ottawa / 2017 / MTM Zone 9 / NAD 83 ORIG

No.	REVISION	DATE	BY
3	ISSUED FOR CITY REVIEW	NOV 01/22	EP
2	ISSUED FOR CLIENT REVIEW	OCT 11/22	EP
1	PREPARED FOR DISCUSSION	SEPT 09/22	EP

NOVATECH
 Engineers, Planners & Landscape Architects
 Suite 200, 240 Michael Cowpland Drive
 Ottawa, Ontario, Canada K2M 1P6
 Telephone: (613) 254-9643
 Facsimile: (613) 254-5867
 Website: www.novatech-eng.com

ISSUED
 NOVEMBER, 2022
 PROJECT No.
 122040
 DRAWING No.
 122040-SP

M:\2021\122040\CAD\Planning\Site Plans\122040-SP.dwg, SP-A1, Nov 01, 2022 - 11:37am, welsh

DXX-XX-XX-XXXX

#XXXXX