

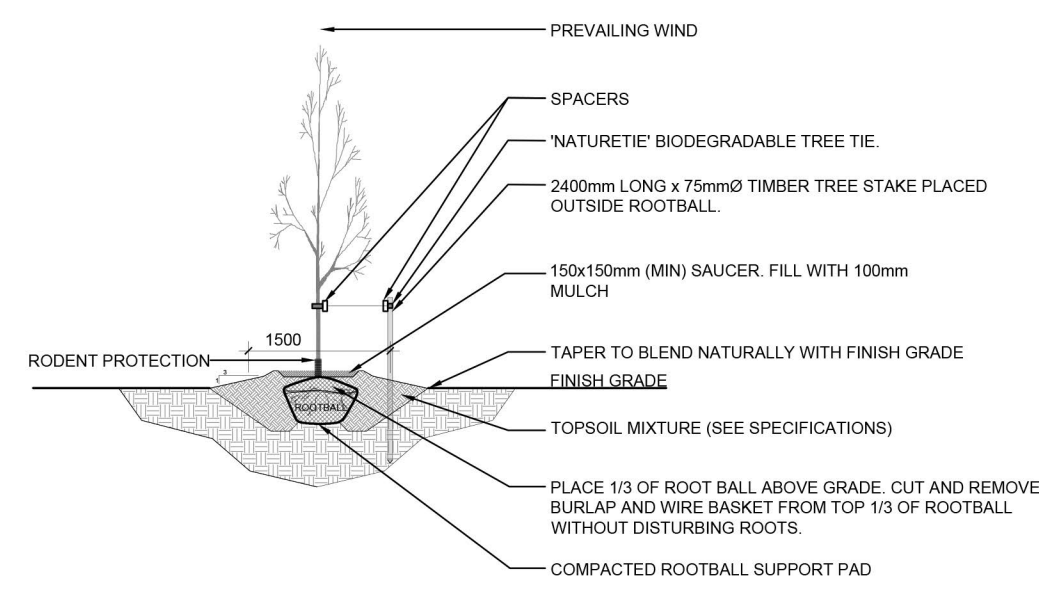


### PROPOSED PLANT LIST

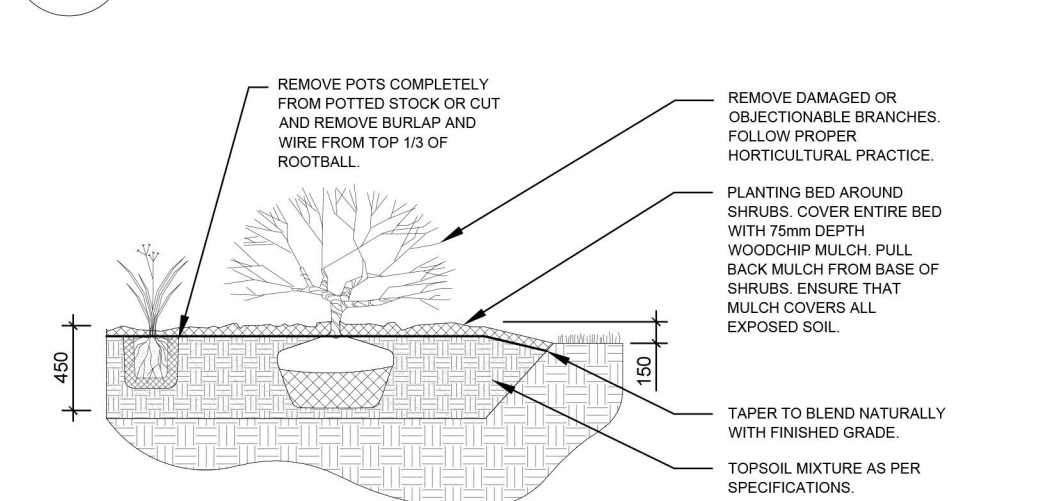
KEY	QTY.	BOTANICAL NAME	COMMON NAME	SIZE	CONDITION	REMARKS
<b>TREES</b>						
NM	3	<i>Acer platanoides</i> 'Columnare'	Columnare Norway Maple	60mm ø	B&B	
<b>SHRUBS</b>						
HY	51	<i>Hydrangea arborescens</i> 'Annabelle'	Annabelle Hydrangea	3 gal. pot	Potted	800 mm o.c.
NB	3	<i>Physocarpus opulifolius</i> 'Little Devil'	Little Devil Ninebark	600mm ht.	Potted	1000 mm o.c.
MP	9	<i>Pinus mugo</i> 'Pumilio'	Dwarf Mugo Pine	600mm spr.	Potted	1000mm o.c.
UY	18	<i>Taxus cuspidata</i> 'Capitata'	Upright Japanese Yew	600 mm spr.	Potted	1200 mm o.c.
<b>PERENNIALS</b>						
DL	40	<i>Hemerocallis</i> 'Stella D'Oro'	Stella D'Oro Day Lily	150mm pot	Potted	400 mm o.c.
LG	63	<i>Leymus arenarius</i> 'Blue Dune'	Blue Dune Lyme Grass	250mm pot	Potted	800 mm o.c.
SA	13	<i>Perovskia atriplicifolia</i>	Russian sage	250mm pot	Potted	600 mm o.c.
SE	24	<i>Sedum telephium</i> 'Autumn Joy'	Autumn Joy Sedum	150mm pot	Potted	400 mm o.c.
SR	136	<i>Phalaris arundinacea</i> 'Strawberries & Cream'	Strawberries & Ribbon Grass	250mm pot	Potted	600 mm o.c.

### EXISTING TREE LIST

KEY	QTY	BOTANICAL NAME	COMMON NAME	SIZE	CONDITION	REMARKS	OWNERSHIP
<b>TREES</b>							
AC	1	<i>Acer negundo</i>	Manitoba Maple	500mm dbh	Fair	To remain	245 Rochester / 98 Willow
AE	2	<i>Acer negundo</i>	Manitoba Maple	200-400mm dbh	Fair	To be removed	245 Rochester / 90 Willow
AN	3	<i>Acer negundo</i>	Manitoba Maple	220-340mm dbh	Fair-good	To be removed	City of Ottawa
AP	3	<i>Acer platanoides</i>	Norway Maple	150-250mm dbh	Good	To be removed	City of Ottawa
FR	1	<i>Fraxinus spp.</i>	Ash	120mm dbh	Dead	To be removed	City of Ottawa
GT	1	<i>Gleditsia triacanthos</i>	Honey Locust	200mm dbh	Fair	To be removed	27 Balsam
MM	2	<i>Acer negundo</i>	Manitoba Maple	150-200mm dbh	Good	To be removed	245 & 261 Rochester
MN	1	<i>Acer negundo</i>	Manitoba Maple	200mm dbh	Good	To remain	98 Willow
SH	1	<i>Sorbus x hybrida</i>	Oakleaf Mountain Ash	490mm dbh	Good	To remain	City of Ottawa
UP	1	<i>Siberian Elm</i>	<i>Ulmus pumila</i>	240mm dbh	Fair	To be removed	City of Ottawa



### 2 DECIDUOUS TREE PLANTING



### 3 SHRUB / PERENNIAL PLANTING

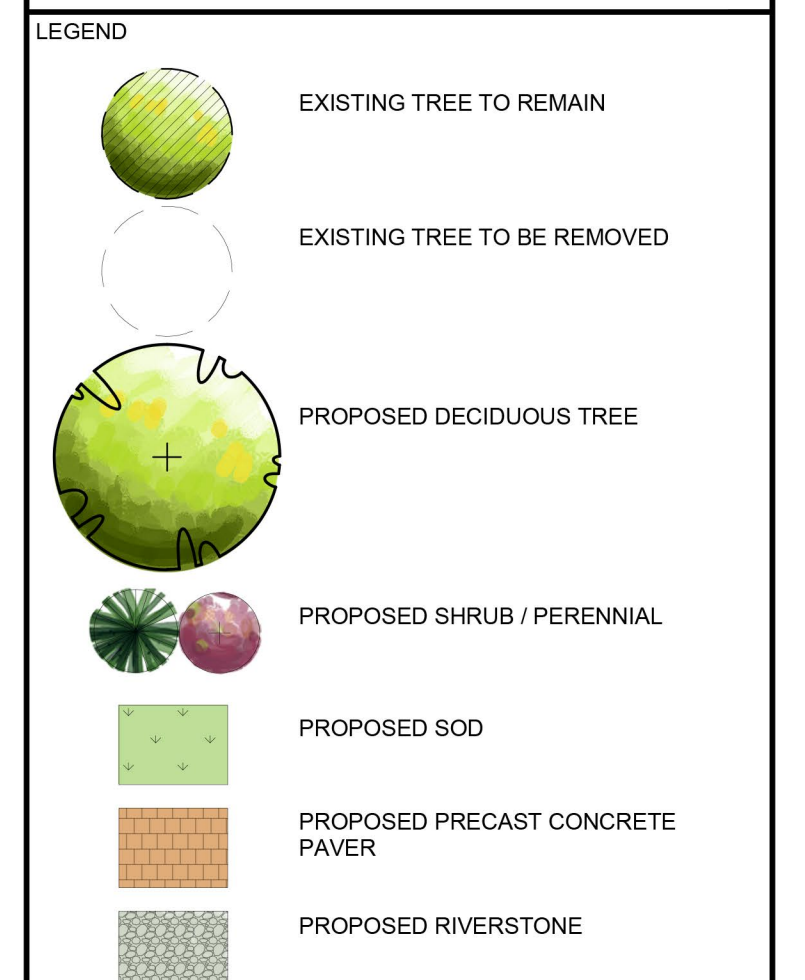


- GENERAL NOTES:**
- IT IS THE RESPONSIBILITY OF THE APPROPRIATE CONTRACTOR OR OFFICIAL TO REPORT ANY ERRORS, OMISSIONS OR DISCREPANCIES ON THIS PLAN WITH ACTUAL SITE CONDITIONS TO THE LANDSCAPE ARCHITECT BEFORE PROCEEDING WITH CONSTRUCTION.
  - THE CONTRACTOR IS TO NOTIFY ALL UTILITY COMPANIES AND AUTHORITIES PRIOR TO ANY EXCAVATION AND ASCERTAIN LOCATIONS OF UNDERGROUND SERVICES.
  - THE CONTRACTOR IS TO REINSTATE ALL AREAS AND ITEMS DAMAGED AS A RESULT OF CONSTRUCTION ACTIVITY.
  - THE CONTRACTOR IS TO COMPLY WITH ALL PERTINENT CODES AND BY-LAWS.
  - THE CONTRACTOR IS TO MAINTAIN A POSITIVE SURFACE RUN-OFF THROUGHOUT THE ENTIRE CONSTRUCTION PERIOD.
  - THE LANDSCAPE ARCHITECT IS NOT RESPONSIBLE FOR SUBSURFACE CONDITIONS.
  - THE CONTRACTOR IS TO IDENTIFY ALL EXISTING TREES ON SITE WITH THE LANDSCAPE ARCHITECT PRIOR TO CONSTRUCTION.
  - THE CONTRACTOR IS TO STAKE THE PROPOSED LOCATION OF ALL PLANT MATERIAL IN CONJUNCTION WITH THE LANDSCAPE ARCHITECT PRIOR TO EXCAVATION.
  - MINIMUM DISTANCES FOR SELECTED DECIDUOUS TREES ARE AS FOLLOWS:
    - BUILDING FOUNDATIONS - 7.5M
    - SIDEWALKS - 1.5M
    - PUBLIC STREETS - 2.5M
    - UNDERGROUND INFRASTRUCTURE - 2.0M
  - ALL TREES WITHIN 1M OF UNDERGROUND UTILITY TRENCHES ARE TO BE EXCAVATED BY HAND.
  - REMOVE ALL PROTECTIVE WRAPPING FROM TREE TRUNKS AFTER INSTALLATION.
  - STAKING OF TREES SHALL ONLY BE PERFORMED IF NECESSARY.
  - ENSURE THAT MULCH IS PULLED BACK A MINIMUM DISTANCE OF 75MM FROM BASE OF TREE TRUNK.

CONSULTANTS

ARCHITECTS: SIMMONDS ARCHITECTURE  
340 CATHERINE STREET, OTTAWA, ON  
K1R 1C4 Tel: (613) 967-7888

CIVIL ENGINEERS: XXXXX  
XXXXX  
Tel: (613)



No.	Issue	Date	LC	JL	CK
1	ISSUED FOR SITE PLAN APPLICATION	10/07/2022			

**JAMES B. LENNOX & ASSOCIATES INC.**  
LANDSCAPE ARCHITECTS  
3333 CARLING AVE. OTTAWA, ONTARIO K2H 3A8  
Tel: (613) 722-5168 Fax: (613) 343-3942

**PROJECT**

ROCHESTER AND BALSAM  
245-267 ROCHESTER ST.  
OTTAWA, ON. K1R 7M9

**DRAWING**

TREE CONSERVATION REPORT &  
LANDSCAPE PLAN

**STAMP**

**SCALE**

AS SHOWN

**START DATE**

AUGUST, 2022

**PROJECT NO.**

22-MIS-2281

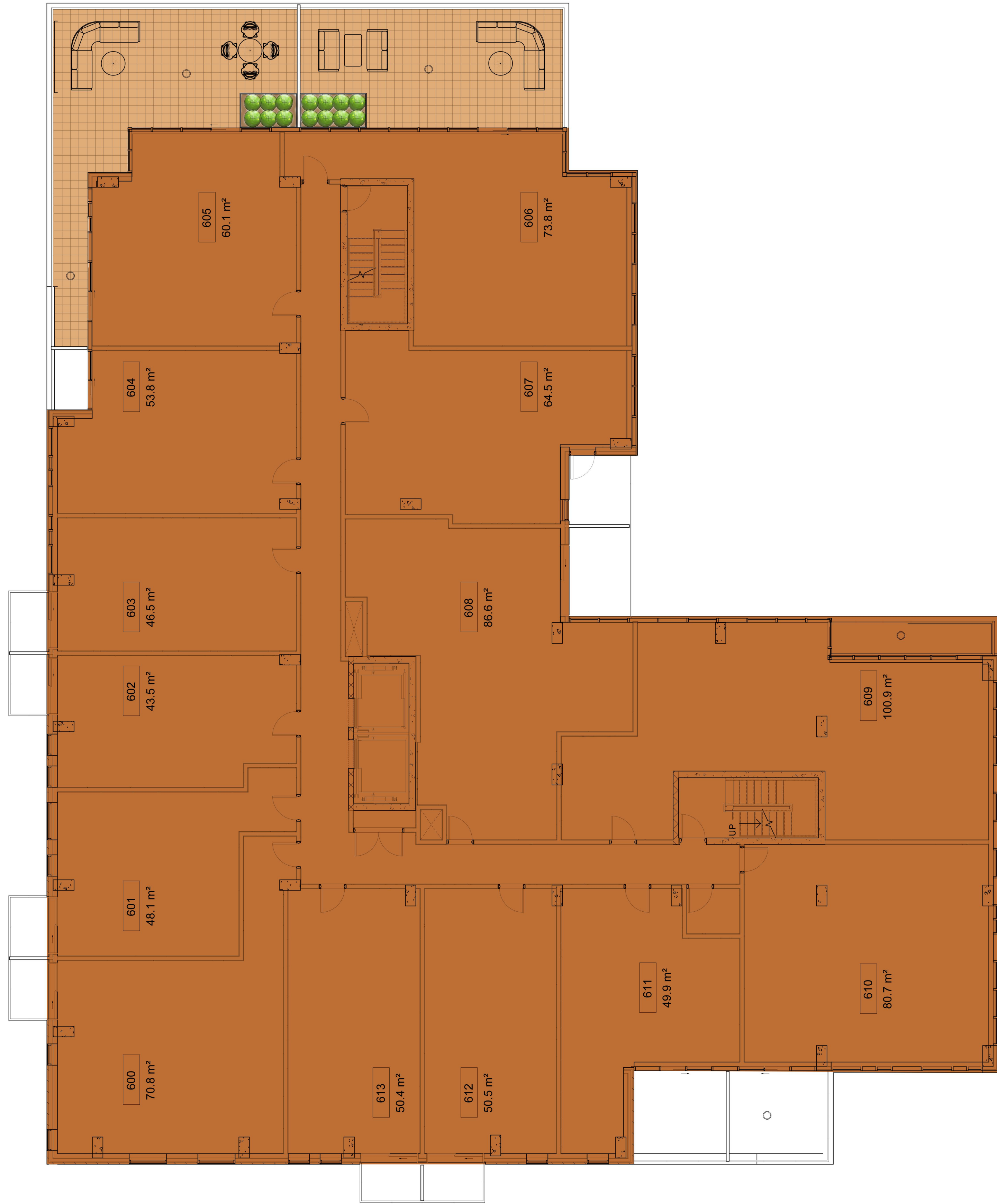
**PROJECT NORTH**

**DRAWING NO.**

**L.1**

PLOT SIZE ARCH-D





1 6th FLOOR LANDSCAPE PLAN  
L.3 SCALE 1:100



**CONSULTANTS**

ARCHITECTS: SIMMONDS ARCHITECTURE  
342 CATHERINE STREET, OTTAWA, ON  
K1R 1C4 Tel: (613) 967-7868

CIVIL ENGINEERS: XXXX  
XXXX  
Tel: (613)

**LEGEND**

PROPOSED PRECAST CONCRETE PAVERS

No.	Issue	Date MM/DD/YY	DR	CK
1	ISSUED FOR SITE PLAN APPLICATION	10/07/2022	LC	JL

**JAMES B. LENNOX & ASSOCIATES INC.**  
**LANDSCAPE ARCHITECTS**  
3332 CARLING AVE. OTTAWA, ONTARIO K2H 5A8  
Tel. (613) 722-5168 Fax. (866) 343-3942

**PROJECT**

ROCHESTER AND BALSAM  
245-267 ROCHESTER ST.  
OTTAWA, ON. K1R 7M9

**DRAWING**

6th FLOOR LANDSCAPE PLAN

**STAMP**

**SCALE**

AS SHOWN

**START DATE**

AUGUST, 2022

**PROJECT NO.**

22-MIS-2281

**DRAWING NO.**

L.3

**PROJECT NORTH**

**PLOT SIZE ARCH-D**

