

ROCHESTER & BALSAM

245-267 ROCHESTER ST. OTTAWA, ON. K1R 7M9
ELECTRICAL

Client

LIGHTING LEGEND	
SYMBOL	DESCRIPTION
	FLUORESCENT/LED LIGHT FIXTURE - TYPE AS SHOWN
	CEILING MOUNTED LIGHT FIXTURE - TYPE AS SHOWN
	WALL MOUNTED LIGHT FIXTURE - TYPE AS SHOWN
	EXTERIOR POLE MOUNT LIGHT FIXTURE - TYPE AS NOTED
	VALENCE LIGHTING - TYPE AS SHOWN
	TRACK LIGHTING - TYPE AS SHOWN
	WALL MOUNTED SWITCH - M.H. 1200mm A.F.F.
	WALL MOUNTED DOUBLE GANG SWITCH - M.H. 1200mm A.F.F.
	WALL MOUNTED TRIPLE GANG SWITCH - M.H. 1200mm A.F.F.
	WALL MOUNTED FOUR GANG SWITCH - M.H. 1200mm A.F.F.
	WALL MOUNTED 3-WAY SWITCH - M.H. 1200mm A.F.F.
	WALL MOUNTED TIMER SWITCH - M.H. 1200mm A.F.F.
	KEY SWITCH - M.H. 1200mm A.F.F.
	PHOTOCELL
	RELAY FOR LIGHTING CONTROL
	MOTION SENSOR SWITCH
	DIMMER SWITCH
	DOOR SWITCH
	CEILING MOUNTED OCCUPANCY SENSOR
	CEILING MOUNTED DAYLIGHT SENSING DETECTOR
	CEILING MOUNTED EXIT LIGHT, SINGLE OR DOUBLE-FACE AS SHOWN
	WALL MOUNTED EXIT LIGHT, SINGLE OR DOUBLE-FACE AS SHOWN
	EMERGENCY BATTERY UNIT C/W RECEPTACLE AND LIGHTING HEADS
	REMOTE EMERGENCY LIGHTING DUAL HEAD - WALL MOUNTED

FIRE ALARM LEGEND	
SYMBOL	DESCRIPTION
	FIRE ALARM CONTROL PANEL
	FIRE ALARM ANNUNCIATOR PANEL
	FIRE ALARM HEAT DETECTOR, 57°C FIXED TEMP.
	FIRE ALARM HEAT DETECTOR, 57°C RATE OF RISE AND FIXED TEMP.
	FIRE ALARM SMOKE DETECTOR CO = CARBON MONOXIDE DETECTOR COMBO RB = DETECTOR COMPLETE WITH AUXILIARY RELAY BASE
	DUCT MOUNTED SMOKE DETECTOR C/W LED INDICATOR
	FIRE ALARM PULL STATION
	FIRE ALARM HORN/STROBE, CEILING MOUNTED
	FIRE ALARM HORN, WALL MOUNTED
	FIRE ALARM HORN AND STROBE LIGHT, WALL MOUNTED
	FIRE ALARM STROBE LIGHT, WALL MOUNTED
	RESIDENTIAL COMBINATION CO/SMOKE ALARM/STROBE LIGHT
	FIRE ALARM SUPERVISED VALVE
	FIRE ALARM FLOW SWITCH
	FIRE ALARM TAMPER SWITCH
	FIRE ALARM CHECK VALVE
	FIRE ALARM LOW PRESSURE SWITCH
	MAGNETIC DOOR HOLD OPEN DEVICE
	CARBON MONOXIDE DETECTOR
	ELECTRICALLY ACTUATED FIRE DAMPER / SMOKE DAMPER / FIRE/SMOKE DAMPER
	FIRE ALARM RELAY
	NATURAL GAS VALVE
	LINE ISOLATOR

PROJECT NOTES
GENERAL

ELECTRICAL DRAWING SHALL BE READ IN CONJUNCTION WITH MECHANICAL, ARCHITECTURAL AND STRUCTURAL SPECIFICATIONS AND DRAWINGS. REFER TO ARCHITECTURAL DETAIL DRAWINGS FOR DIMENSIONS AND ADDITIONAL INFORMATION.

POWER LEGEND	
SYMBOL	DESCRIPTION
	15A, 120V WALL MOUNTED DUPLEX RECEPTACLE
	DEDICATED DUPLEX RECEPTACLE
	GROUND FAULT INTERRUPTING RECEPTACLE
	RECEPTACLE INSTALLED OVER COUNTER
	DUPLEX RECEPTACLE, HALF SWITCHED
	5-20R HOUSEKEEPING RECEPTACLE
	SPLIT CIRCUIT RECEPTACLE
	5-20R RECEPTACLE INSTALLED OVER COUNTER
	15A, 120V WALL MOUNTED QUAD RECEPTACLE
	SPECIAL RECEPTACLE - TYPE AS INDICATED
	JUNCTION BOX, 250x250x150mm UNLESS NOTED OTHERWISE B = WINDOW BLIND SINGLE GANG BOX
	MAIN JUNCTION/PULL BOX
	DISCONNECT SWITCH
	COMBINATION MAGNETIC MOTOR STARTER
	MANUAL MOTOR STARTER C/W AUX. CONTACTS - CSA CERTIFIED AS A DISCONNECTING MEANS AND LOCKABLE IN THE "OFF" POSITION.
	MOTORIZED DAMPER BY MECHANICAL
	TRANSFORMER
	THERMOSTAT PROVIDED BY ELECTRICAL
	THERMOSTAT SUPPLIED BY MECH. INSTALLED & WIRED BY ELECTRICAL
	SPEED SWITCH SUPPLIED BY MECH. INSTALLED & WIRED BY ELECTRICAL
	TIME CLOCK
	SINGLE PHASE ELECTRIC MOTOR
	THREE PHASE ELECTRIC MOTOR - HORSEPOWER AS SHOWN
	SURFACE MOUNTED PANEL
	RECESSED PANEL
	GENERATOR C/W ENVIRONMENTAL HOUSING
	BARRIER-FREE DOOR OPERATOR C/W PUSHBUTTONS
	FLEXIBLE CONDUIT
	CONDUIT DOWN
	CONDUIT UP
	HARD WIRE CONNECTION
	PILOT LIGHT
	HOMERUN BACK TO PANEL
	WIRING IN OR UNDER FLOOR
	CONDUIT STUB C/W BUSHING
	HIGH TEMPERATURE ALARM BELL
	VARIABLE FREQUENCY DRIVE

SITE SERVICES LEGEND	
SYMBOL	DESCRIPTION
	HYDRO METER
	HYDRO OTTAWA PAD MOUNT TRANSFORMER
	HYDRO OTTAWA HIGH VOLTAGE PAD MOUNT SWITCH
	UTILITY MANHOLE REFER TO NOTES
	UTILITY POLE (HYDRO/TEL/TV) REFER TO NOTES
	UNDERGROUND CONDUIT/DUCT FOR HIGH VOLTAGE PRIMARY POWER CABLES
	UNDERGROUND POWER UTILITY CONDUIT & WIRING H= LOW VOLTAGE HYDRO, SL= SITE LIGHTING
	UNDERGROUND COMM UTILITY CONDUIT & WIRING F= FIBER OPTIC, T= TELEPHONE, C= CABLE TV
	CONCRETE ENCASED DUCTBANK
	SINGLE HEAD POST TOP LIGHT STANDARD
	DOUBLE HEAD POST TOP LIGHT STANDARD
	WALL MOUNT LUMINAIRE
	TELEPHONE PEDESTAL
	CABLE TV PEDESTAL

TELECOMMUNICATION LEGEND	
SYMBOL	DESCRIPTION
	DATA OUTLET BOX
	TELEPHONE OUTLET BOX
	COMBINATION DATA/TELEPHONE OUTLET BOX
	CATV OUTLET BOX
	TELEPHONE JUNCTION BOX
	DATA JUNCTION BOX
	SERVICE 'IFFY' POLE
	PUBLIC ADDRESS (P/A) SPEAKER, CEILING MOUNTED
	PUBLIC ADDRESS (P/A) SPEAKER, WALL MOUNTED
	PUBLIC ADDRESS HORN
	PUBLIC ADDRESS VOLUME CONTROL
	CLOCK OUTLET, WALL MOUNTED
	CLOCK OUTLET, CEILING MOUNTED
	MICROPHONE OUTLET
	SMART BOX FOR TELEPHONE AND CATV

SECURITY LEGEND	
SYMBOL	DESCRIPTION
	CARD READER
	PROXIMITY READER/RECEIVER
	ELECTRICAL STRIKE
	DOOR CONTACT
	REQUEST TO EXIT
	MAG LOCK
	KEYPAD
	KEY SWITCH
	CEILING STROBE LIGHT
	WALL MOUNT STROBE LIGHT
	BUZZER
	SECURITY CCTV CAMERA
	SECURITY MOTION SENSOR
	DOOR ENTRY INTERCOM STATION
	OCCUPIED SIGN
	DOOR LOCK SIGN
	AUDIO/VISUAL EMERGENCY CALL DURESS LIGHT
	DOOR PUSH BUTTON

HEATING LEGEND	
SYMBOL	DESCRIPTION
	BASEBOARD HEATER C/W BUILT-IN THERMOSTAT
	BASEBOARD HEATER C/W BUILT-IN RELAY
	CONSOLE HEATER: SURFACE MOUNT, RECESSED
	FORCED FLOW HEATER: SURFACE, RECESSED
	HOT WATER TANK
	RADIANT HEATER
	UNIT HEATER

EXTERIOR LIGHTING FIXTURE SCHEDULE							
TYPE	DESCRIPTION	CATALOG NUMBER	LAMPS PER FIXTURE			MOUNTING	REMARKS
			TYPE	WATTS	COLOUR		
A	EXTERIOR WALL PACK WALL LUMINAIRE - DIRECTED LIGHT	BEGA 22215K3	LED	3.0	3000K	120	SURFACE WALL
B	EXTERIOR WALL MOUNT PLATE OUT SINGLE INDIRECT	EUREKA LIGHTING 3449-LED-REG-30-120-WHE	LED	4.9	3000K	120	SURFACE WALL
C	EXTERIOR RECESSED CEILING DOWNLIGHT VORTEX REFLECTOR WIDE BEAM	BEGA 24805K3	LED	10.4	3000K	120	RECESSED CEILING
D	EXTERIOR SURFACE CEILING DOWN LIGHT SYRIOS SQUARE 6 FLOOD OPTICS	LUMINIS S0610-L1L15-R30	LED	15	4000K	120	SURFACE CEILING
E	EXTERIOR WALL SCONCE SCENA SURFACE MOUNT ROUND 8.5in.	LUMINIS SN805-L1L15-K30	LED	12	3000K	120	SURFACE WALL
F	EXTERIOR BOLLARD SCENA BOLLARD	LUMINIS SN805B-L1L15-K30	LED	12	3000K	120	EXTERIOR GROUND
G	ARCHITECTURAL WALL SCONCE VISUAL COMFORT FORWARD OPTIC	LITHONIA LIGHTING WDGE1 LED P1 30K 80CRI VF	LED	10	3000K	120	SURFACE WALL

NOTES:
1. FINAL FIXTURE FINISH/TRIM/COLOUR TEMPERATURE SELECTION SHALL BE BY INTERIOR DESIGNER.
2. ALL INTEGRATED LED FIXTURES SHALL BE C/W DRIVERS.
3. PROVIDE DRYWALL ADAPTOR KIT IN ALL FIXTURES IN HARD CEILING.

ABBREVIATION LEGEND	
ABBREVIATION	DESCRIPTION
F	FLOOR MOUNTED
GFI	GROUND FAULT INTERRUPTING, 5 mA
GND	GROUND
C	CEILING MOUNTED
OC	OVER COUNTER
WP	WEATHERPROOF
RB	RELAY BASE
AFI	ARC FAULT CIRCUIT INTERRUPTER
MW	MICROWAVE
DW	DISHWASHER
OAH	OVERALL HEIGHT
HP	HEAT PUMP
AV	AUDIO/VISUAL EQUIPMENT RACK
ATS	AUTOMATIC TRANSFER SWITCH

DRAWING LIST	
DRAWING	DESCRIPTION
E1	ELECTRICAL LEGEND, DRAWING LIST & LIGHT FIXTURE SCHEDULE
E2	ELECTRICAL SITE PLAN

THE ENGINEER WAIVES ANY AND ALL RESPONSIBILITY AND LIABILITY FOR PROBLEMS WHICH ARISE FROM FAILURE TO FOLLOW THESE PLANS, SPECIFICATIONS AND THE DESIGN INTENT THEY CONVEY, OR FOR PROBLEMS WHICH ARISE FROM OTHER FAILURE TO OBTAIN AND / OR FOLLOW THE ENGINEER'S GUIDANCE WITH RESPECT TO ANY ERRORS, OMISSIONS, INCONSISTENCIES, AMBIGUITIES OR CONFLICTS WHICH ARE ALLEGED.

THIS DRAWING IS THE PROPERTY OF GOODKEY WEEDMARK & ASSOCIATES LIMITED AND ALL COPYRIGHTS ARE RESERVED. NO USE OF THIS DRAWING MAY BE MADE WITHOUT EXPRESS WRITTEN CONSENT.
DO NOT SCALE DRAWINGS

L'INGÉNIEUR DÉCLINE TOUTE RESPONSABILITÉ DÉCOULANT DE PROBLÈMES FAISANT SUITE AU NON RESPECT DES PLANS, DEVIS ET DE L'INTENTION DU CONCEPT OUTILS INDICANT OU DE TOUTS LES PROBLÈMES PROUVANT RÉSULTER DU DÉFAUT D'OBTENIR ET / OU DE SUIVRE LES CONSEILS DE L'INGÉNIEUR EN CE QUI CONCERNE LES ERREURS, OMISSIONS, INCONSISTANCES, AMBIGUITÉS OU CONFLITS ALLEGUÉS.

CE DESSIN EST LA PROPRIÉTÉ LITTÉRAIRE DE GOODKEY WEEDMARK & ASSOCIATES LIMITED ET TOUTS LES DROITS SONT RÉSERVÉS. L'UTILISATION EST INTERDITE SANS LE CONSENTEMENT ÉCRIT DE L'AUTEUR.
NE PAS MESURER LES DESSINS À L'ÉCHELLE

Goodkey Weedmark
Consulting Engineers

GOODKEY WEEDMARK & ASSOCIATES LIMITED
1688 Woodward Dr. 613 727-5111 Voice
Ottawa Ontario 613 727-5115 Fax
Canada K2C 3R8 www.gwal.com Web

Project north
Nord du projet

Seal/Scieu

Project/Projet
ROCHESTER AND BALSAM
245-267 ROCHESTER ST.
OTTAWA, ON. K1R 7M9

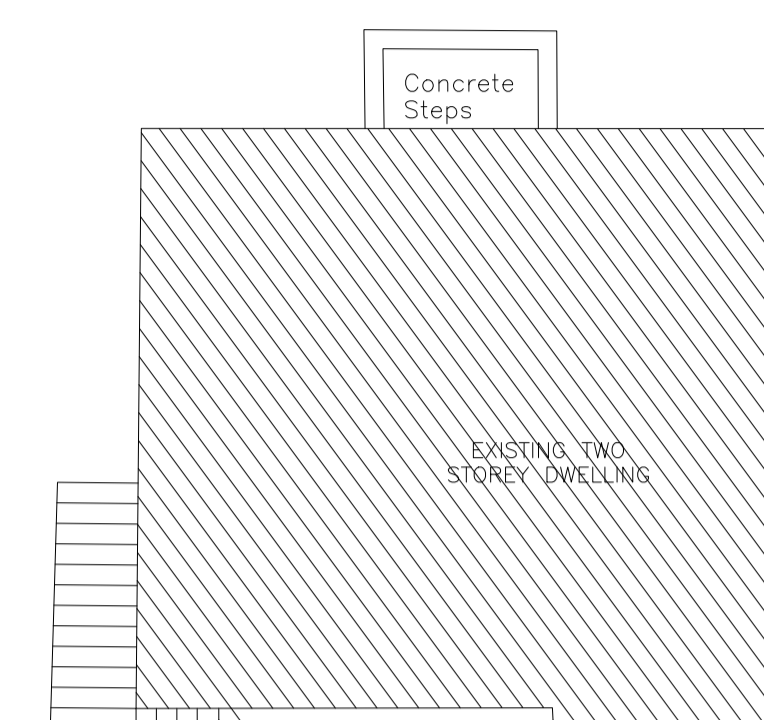
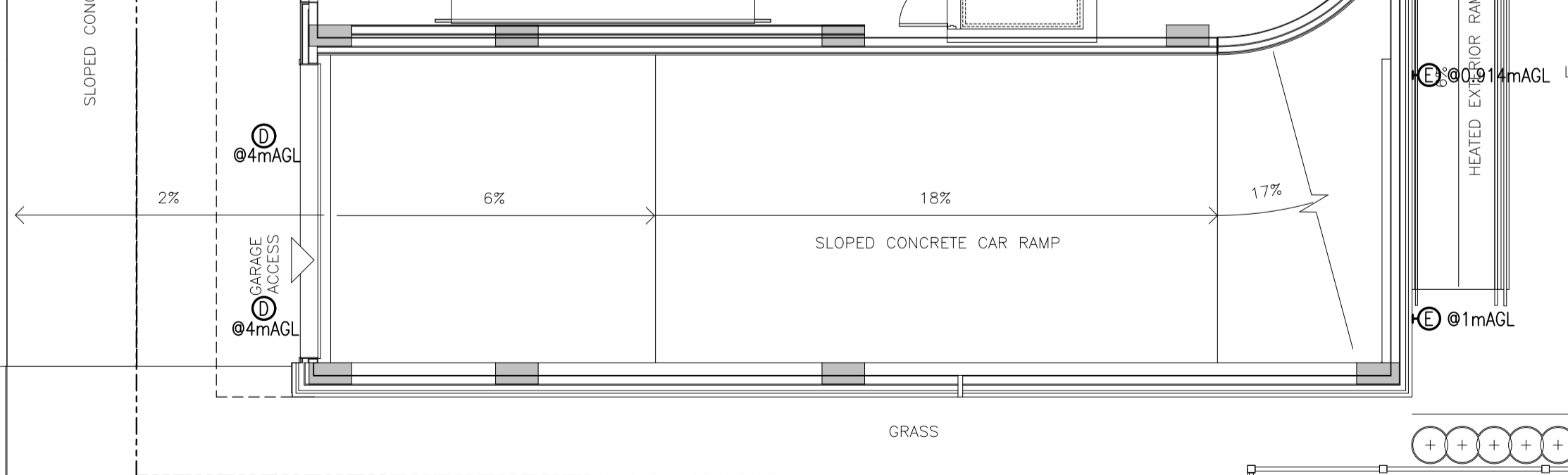
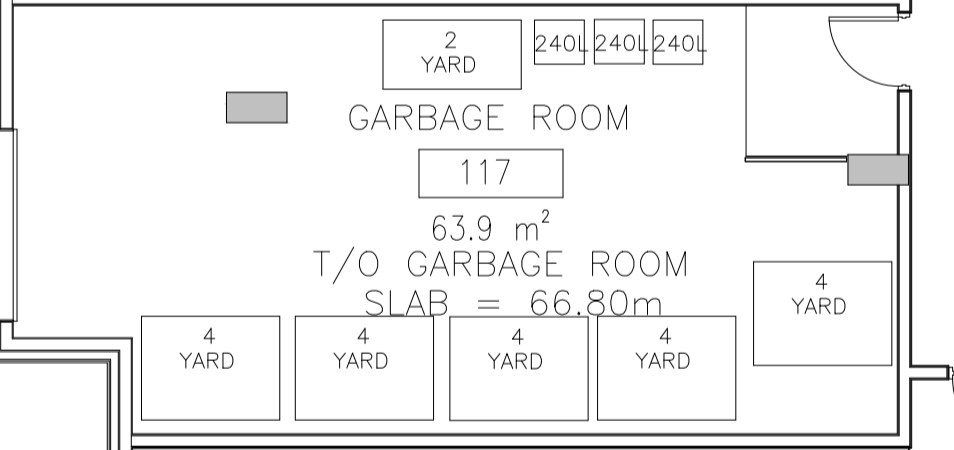
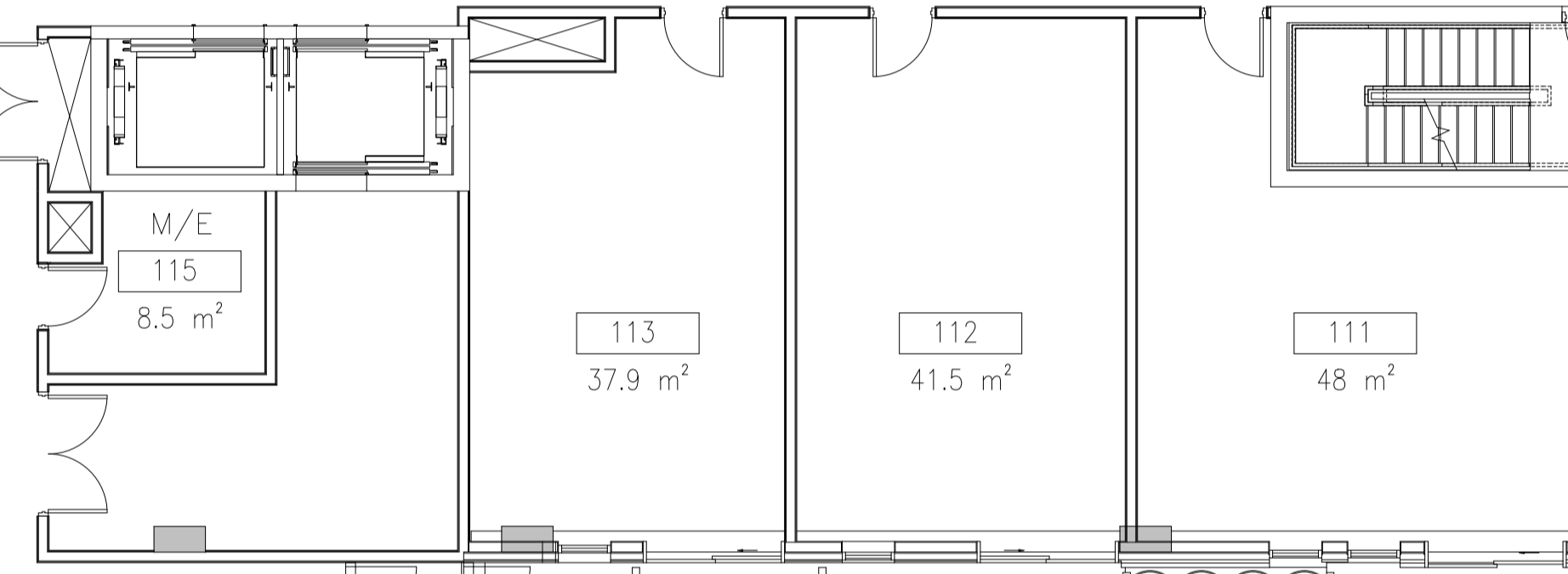
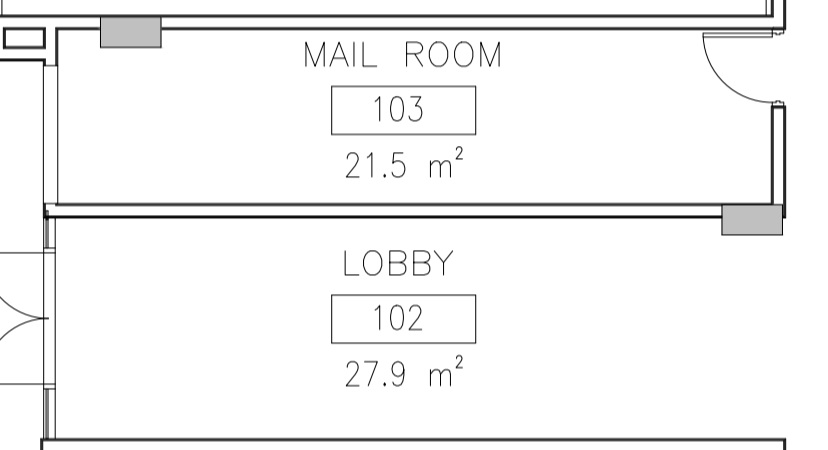
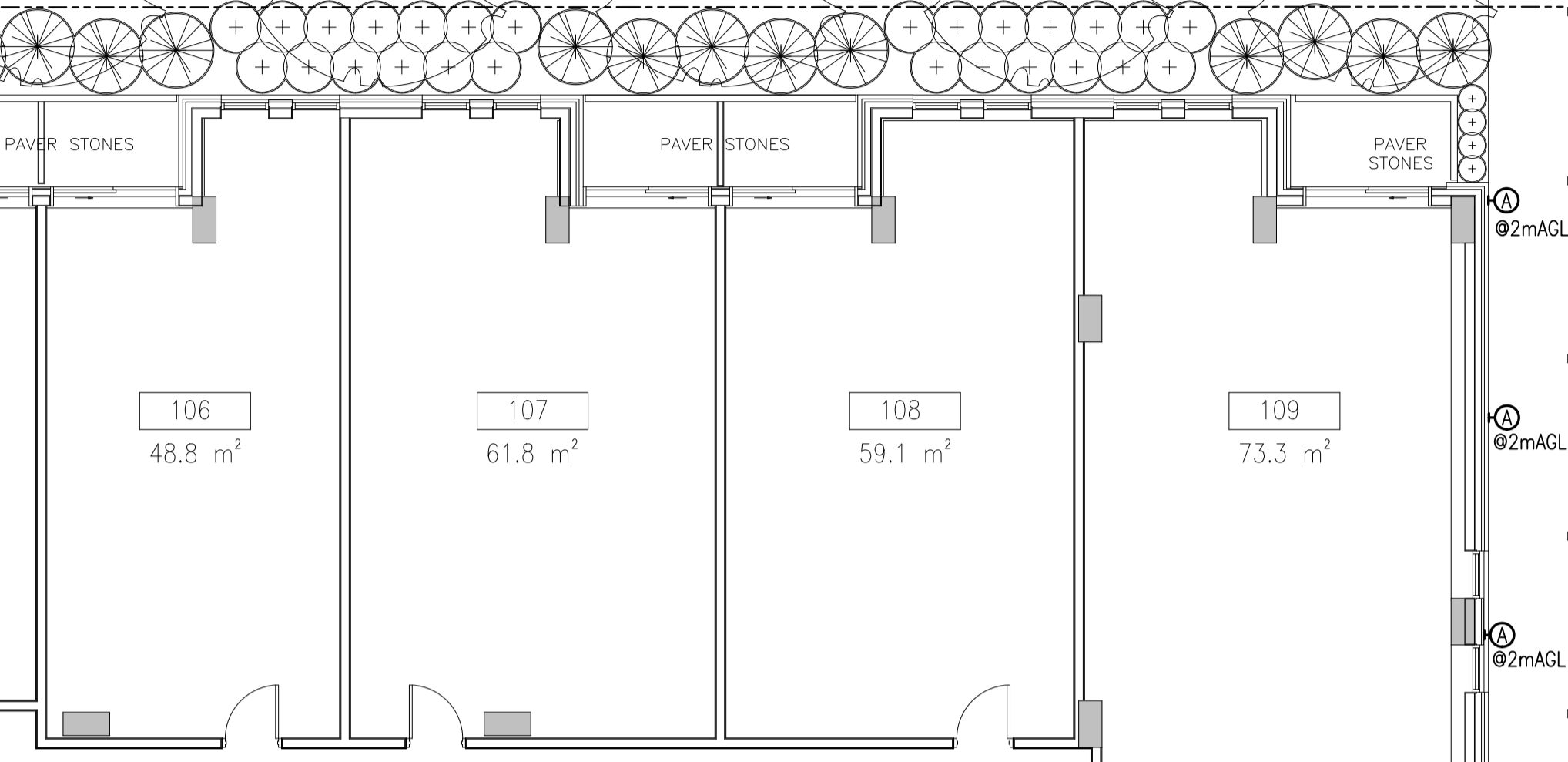
Drawing title/Titre du dessin
**ELECTRICAL TITLE PAGE,
SYMBOL LEGEND,
LIGHT FIXTURE SCHEDULE
& DRAWING LIST**

Scale	AS NOTED	Project no./No. du projet	2022-456
Echelle		Design by	B. POTTER
Drawn by	B. POTTER	Conçu par	B. POTTER
Reviewed by	D. VYAS	Dessiné par	E1
Examined par			2

ROCHESTER STREET

EXISTING CONCRETE SIDEWALK

GRASS



EXISTING SEVEN STOREY RESIDENTIAL BUILDING

BALSAM STREET

EXISTING TREE TO REMAIN

EXISTING CONCRETE SIDEWALK

DEPRESSED MONOLITH CURB AND SIDEWALK

RESIDENTIAL ACCESS

2%

1.524mAGL

2.438mAGL

2.438mAGL

4mAGL

4mAGL

4mAGL

4mAGL

Wall/Curb 0.1 East

Wall/Curb 0.1 East

EXISTING STUCCO PRIVACY FENCE AT SHARED PROPERTY LINE

EXISTING TWO STOREY DWELLING

1
E2
1:100

ELECTRICAL LAYOUT - SITE PLAN

Client

DATE	REVISION	REF
2022-10-07	ISSUED FOR SITE PLAN	1
2022-09-26	ISSUED FOR REVIEW	-

THE ENGINEER WAIVES ANY AND ALL RESPONSIBILITY AND LIABILITY FOR PROBLEMS WHICH ARISE FROM FAILURE TO FOLLOW THESE PLANS, SPECIFICATIONS AND THE DESIGN INTENT THEY CONVEY, OR FOR PROBLEMS WHICH ARISE FROM OTHER FAILURE TO OBTAIN AND / OR FOLLOW THE ENGINEER'S GUIDANCE WITH RESPECT TO ANY ERRORS, OMISSIONS, INCONSISTENCIES, AMBIGUITIES OR CONFLICTS WHICH ARE ALLEGED.

THIS DRAWING IS THE PROPERTY OF GOODKEY WEEDMARK & ASSOCIATES LIMITED AND ALL COPYRIGHTS ARE RESERVED. NO USE OF THIS DRAWING MAY BE MADE WITHOUT EXPRESS WRITTEN CONSENT.

DO NOT SCALE DRAWINGS

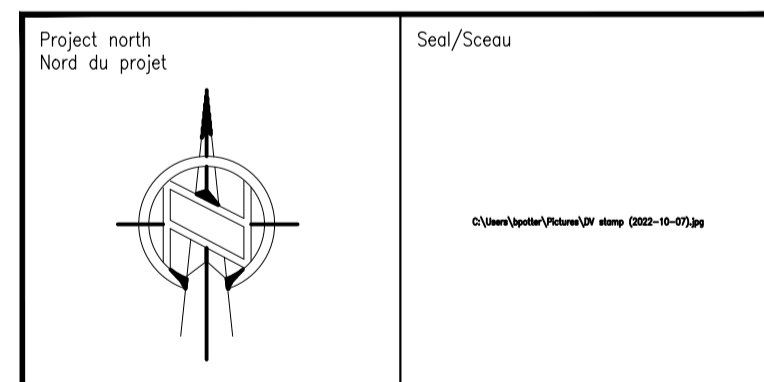
L'INGÉNIEUR DÉCLINE TOUTE RESPONSABILITÉ DÉCOULANT DE PROBLÈMES FAISANT SUITE AU NON RESPECT DES PLANS, DEVIS ET DE L'INTENTION DU CONCEPT QU'ILS INDICENT OU DE TOUTS LES PROBLÈMES POUVANT RÉSULTER DU DÉFAUT D'OBTENIR ET / OU DE SUIVRE LES CONSEILS DE L'INGÉNIEUR EN CE QUI CONCERNE LES ERREURS, OMISSIONS, INCONSISTANCES, AMBIGUITÉS OU CONFLITS ALLEGÉS.

CE DESSIN EST LA PROPRIÉTÉ LITTÉRAIRE DE GOODKEY WEEDMARK & ASSOCIATES LIMITED ET TOUTS LES DROITS SONT RÉSERVÉS. L'UTILISATION EST INTERDITE SANS LE CONSENTEMENT ÉCRIT DE L'AUTEUR.

NE PAS MESURER LES DESSINS À L'ÉCHELLE

Goodkey Weedmark
Consulting Engineers

GOODKEY WEEDMARK & ASSOCIATES LIMITED
1688 Woodward Dr. 613 727-5111 Voice
Ottawa Ontario 613 727-5115 Fax
Canada K2C 3R8 www.gwol.com Web



Project/Projet
ROCHESTER AND BALSAM
245-267 ROCHESTER ST.
OTTAWA, ON. K1R 7M9

Drawing title/Titre du dessin
ELECTRICAL LAYOUT
SITE PLAN

Scale Échelle	AS NOTED B. POTTER	Project no./No. du projet 2022-456
Design by Conçu par	B. POTTER	Drawing/Dessin E2
Drawn by Dessiné par	B. POTTER	Reviewed by Examiné par
	D. WAS	2