

Site Benchmark
Concrete Pin in UP
Elevation = 66.40

EXIST. CB
TOP 65.74

EXIST. COMB MH
TOP 65.74

EXIST. COMB MH
TOP 66.03

EXIST. CB
TOP 66.14

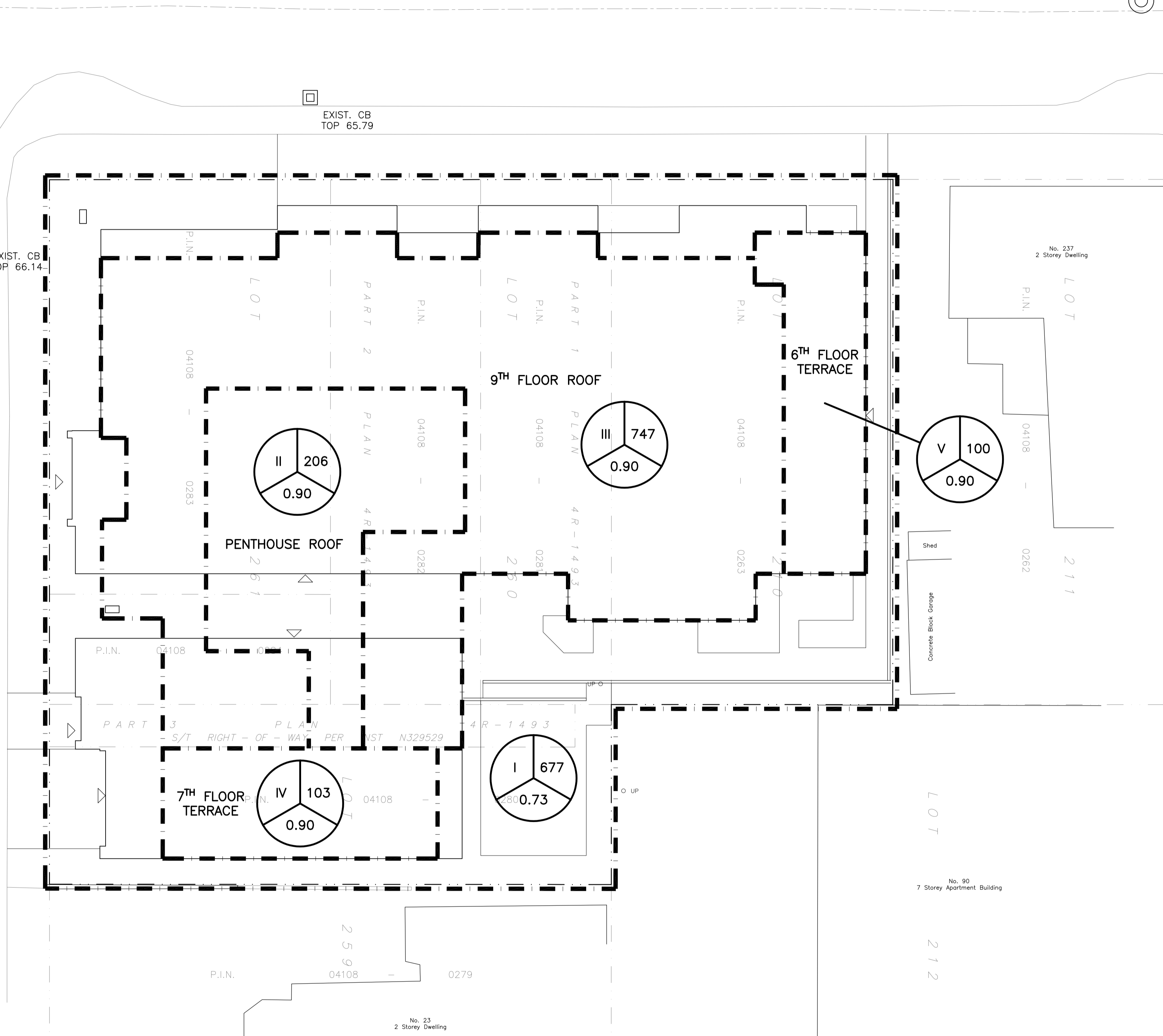
EXIST. CB
TOP 66.14

EXIST. CB
TOP 65.79

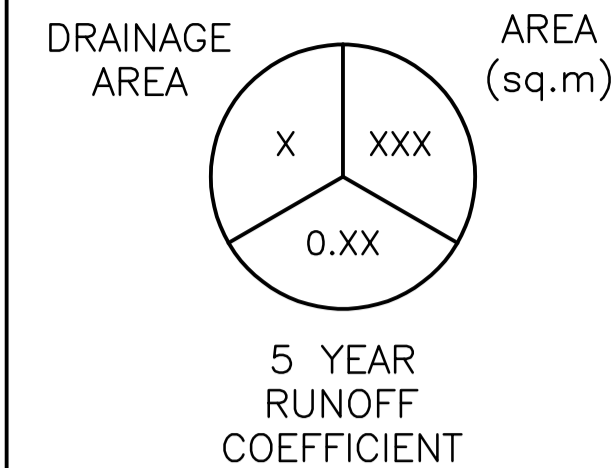
EXIST. COMB MH
TOP 66.31

ROCHESTER STREET

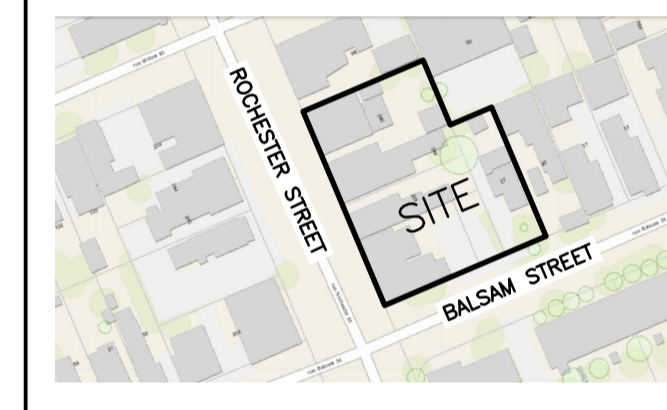
BALSAM STREET



LEGEND



KEY PLAN



No.	DATE	REVISION
1	OCT 24-22	ISSUED FOR APPROVAL

D. B. GRAY ENGINEERING INC.
Stormwater Management - Grading & Drainage - Storm & Sanitary Sewers - Watermain
700 Long Point Circle 613-425-8044
Ottawa, Ontario d.gray@dbgrayengineering.com

Project
PROPOSED 9-STORY MIXED-USE BUILDING
245-263 ROCHESTER STREET & 27 BALSAM STREET
OTTAWA, ONTARIO

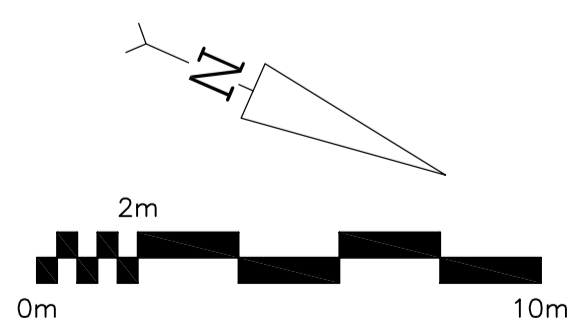
Drawing Title
DRAINAGE PLAN

Engineer's Seal

 NOT VALID UNLESS SIGNED & DATED

Drawn D.B.G.
 H. Scale 1:150
 V. Scale
 Date SEP 1-22
 Job No. 22076

Drawing No.
C-4
 of 4



EXIST. COMB MH
TOP 66.99